

FLEX & OFFICE SPACE FOR LEASE

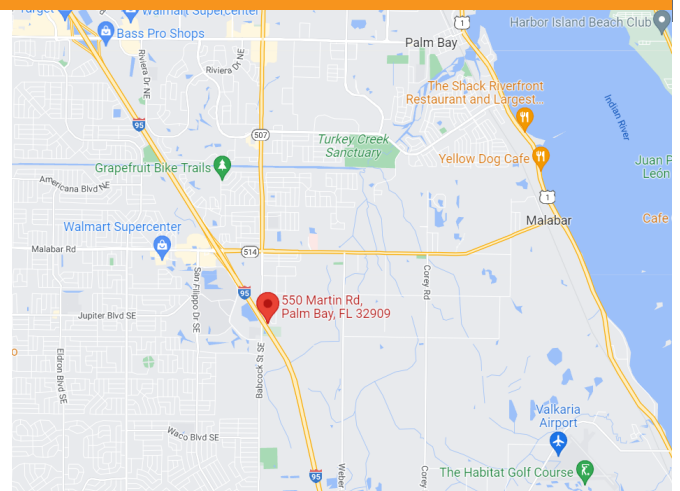
550 MARTIN ROAD SE

Palm Bay, FL 32909



New Construction

- New Construction Building in Palm Bay
- Visibility from I-95 & Babcock Street!
- Zoning GC - General Commercial
- 1,050 SF Bays with Roll-up Doors
- Private Restrooms for Each Bay
- 2 Upstairs Offices 525 SF Each with Private Restrooms
- \$16/SF/YR Modified Gross for Base Unit



Nicole Reed
JM Real Estate, Inc.
Office: 321.242.2882 x 201
Cell: 314.795.4339
Nicole@JMRealEstate.com

FLEX & OFFICE SPACE FOR LEASE

550 MARTIN ROAD SE

Palm Bay, FL 32909



COMMERCIAL
MANAGEMENT
LEASING
SALES



Nicole Reed
JM Real Estate, Inc.
Office: 321.242.2882 x 201
Cell: 314.795.4339
Nicole@JMRealEstate.com

Information contained herein has been obtained from others and is considered to be reliable; however, a prospective purchaser, agent, or lessee is expected to verify all information to their satisfaction. We make no guarantee, warranty, or representations herein. Licensed Real Estate Broker.

FLEX & OFFICE SPACE FOR LEASE

550 MARTIN ROAD SE

Palm Bay, FL 32909



COMMERCIAL
MANAGEMENT
LEASING
SALES



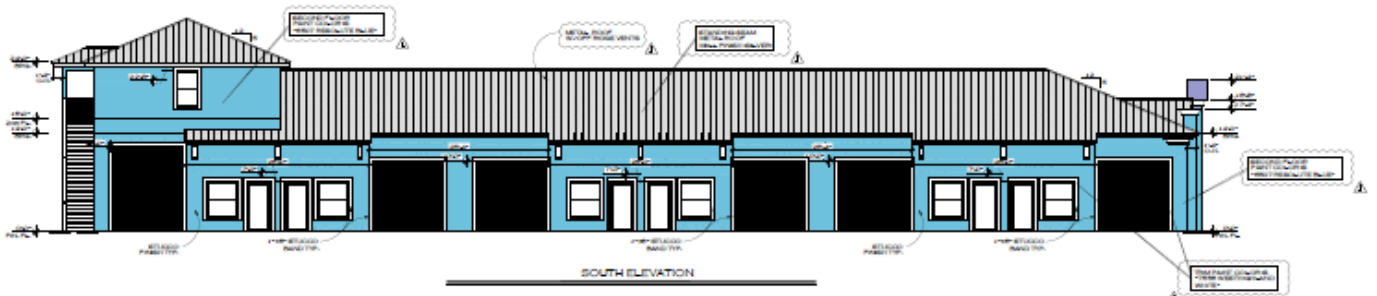
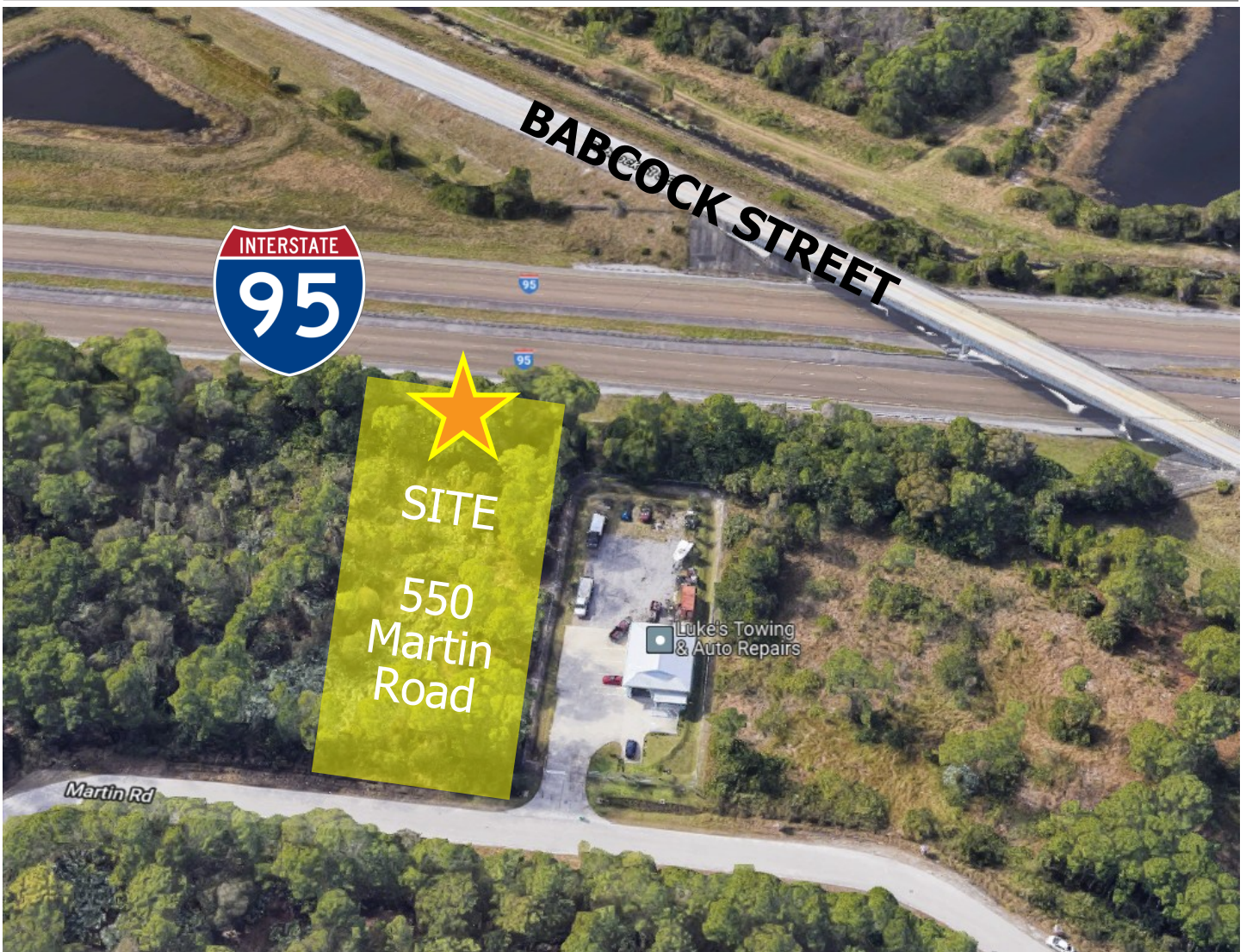
Nicole Reed
JM Real Estate, Inc.
Office: 321.242.2882 x 201
Cell: 314.795.4339
Nicole@JMRealEstate.com

Information contained herein has been obtained from others and is considered to be reliable; however, a prospective purchaser, agent, or lessee is expected to verify all information to their satisfaction. We make no guarantee, warranty, or representations herein. Licensed Real Estate Broker.

FLEX & OFFICE SPACE FOR LEASE

550 MARTIN ROAD SE

Palm Bay, FL 32909



COMMERCIAL
MANAGEMENT
LEASING
SALES



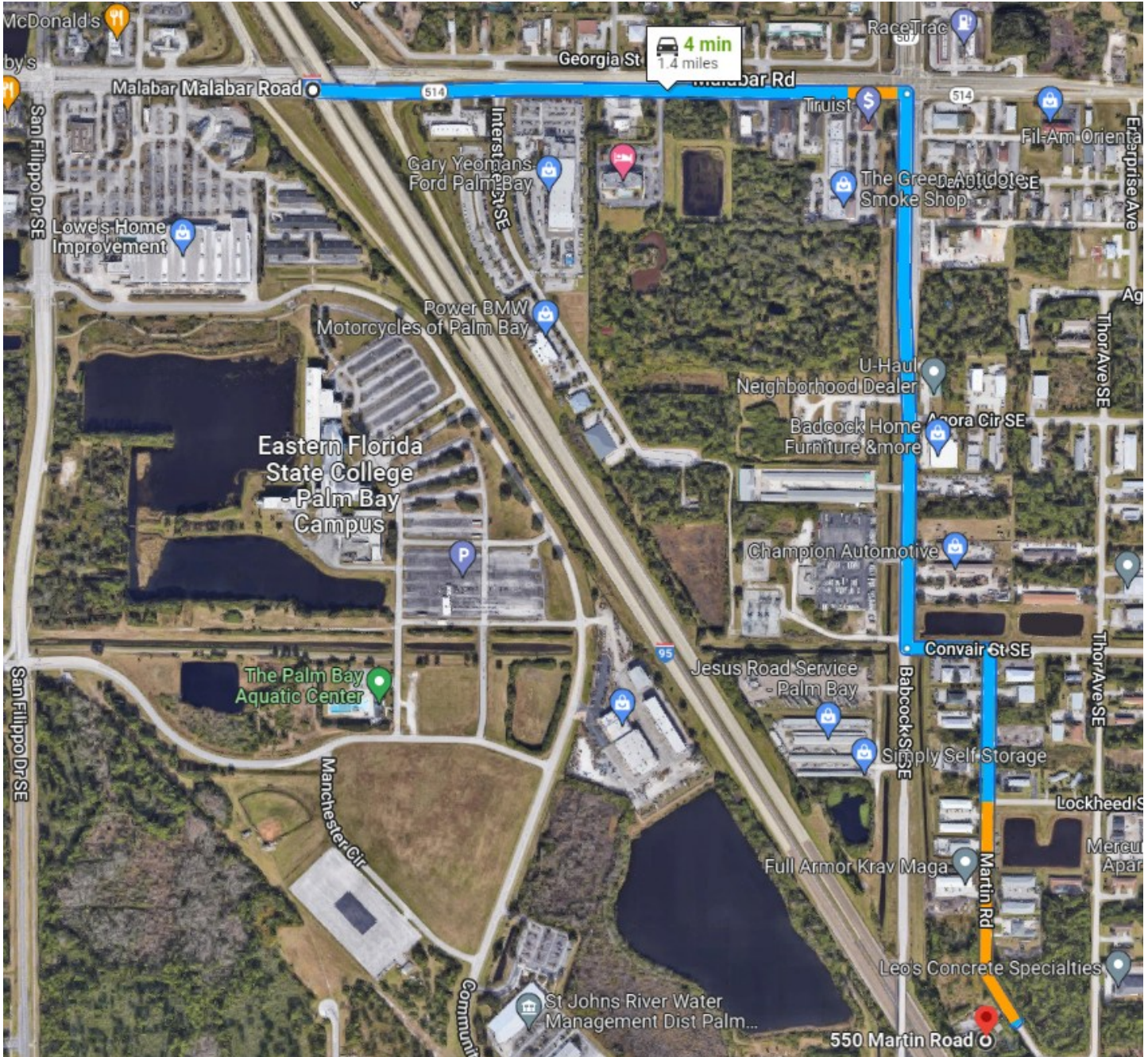
Nicole Reed
JM Real Estate, Inc.
Office: 321.242.2882 x 201
Cell: 314.795.4339
Nicole@JMRealEstate.com

FLEX & OFFICE SPACE FOR LEASE

550 MARTIN ROAD SE

Palm Bay, FL 32909

1.4 Miles, 4 Minutes to I-95



COMMERCIAL
MANAGEMENT
LEASING
SALES



Nicole Reed
JM Real Estate, Inc.
Office: 321.242.2882 x 201
Cell: 314.795.4339
Nicole@JMRealEstate.com