

FOR LEASE

PROPERTY DETAILS



Fully built-out restaurant for Lease in Hamilton Heights across from City College of New York

Asking: \$15,500 per month

- Gas and venting in place
 - Possession: Immediate
 - 2,000 SF on Ground floor
 - Full Basement
 - Fully Equipped
 - Key money upon request
 - High Ceilings
 - South & East Facing Windows
 - 25 ft. of Frontage on Amsterdam
 - 100 ft. of Frontage on 140th St.
 - Approved sidewalk café

CURRENTLY: "GRILL ON THE HILL"

<https://www.gothny.com/>

Neighbors:

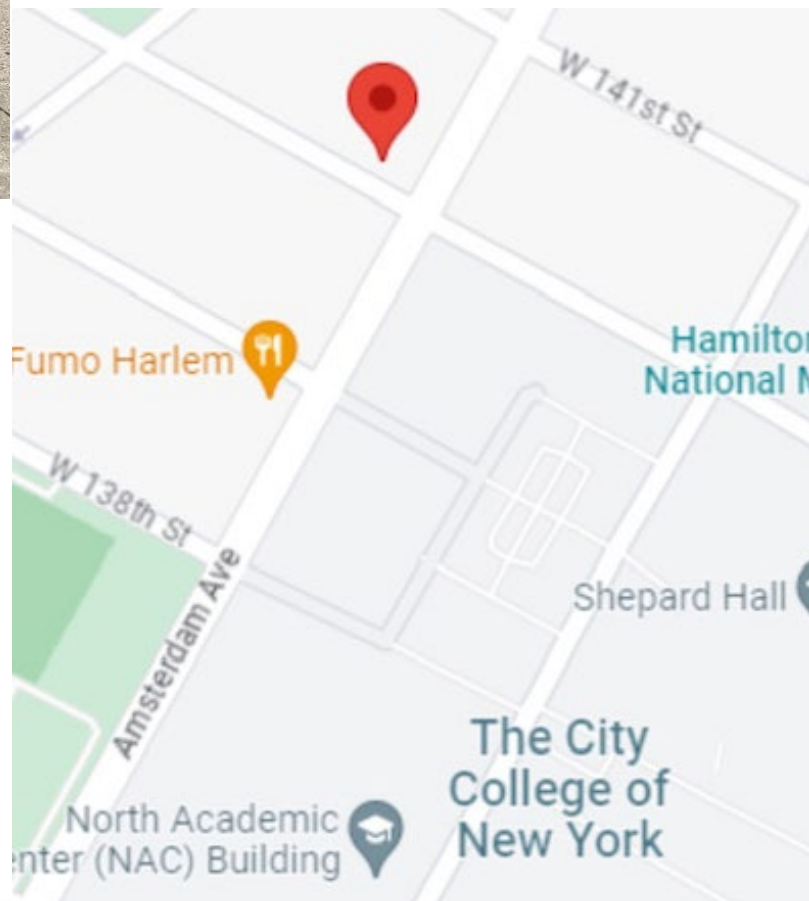
Oso Mexican Restaurant
City College of NY

Transit: 137th St **1**, M100, 145th St. **A,C B,D**

FOR MORE INFORMATION, PLEASE CONTACT:



Tom Brady
Douglas Elliman
Commercial Sales and Leasing
212.572.3118
tbrady@elliman.com



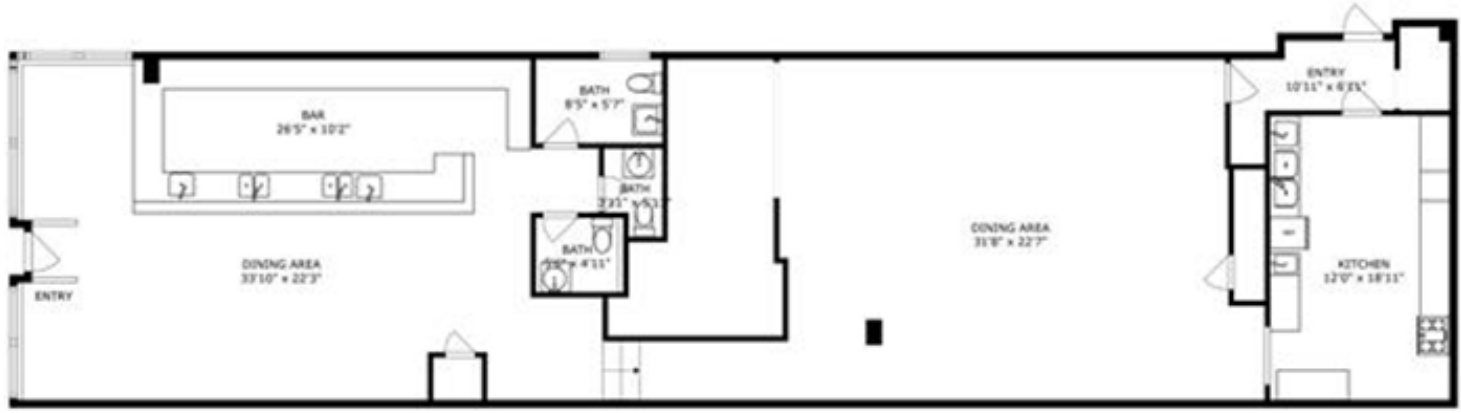
Corner of 140th & Amsterdam



Back Dining area



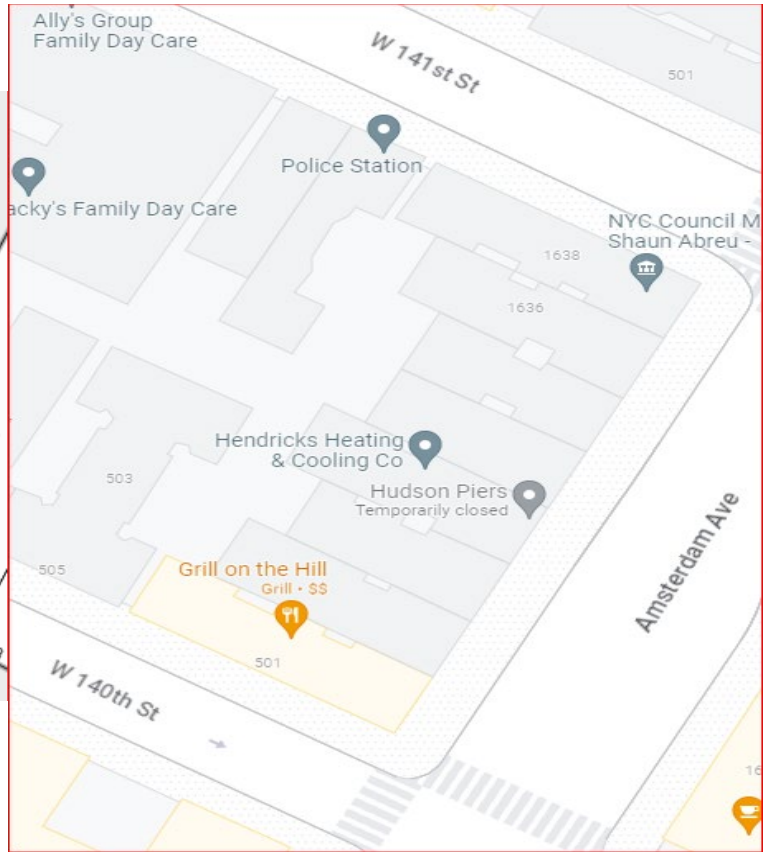
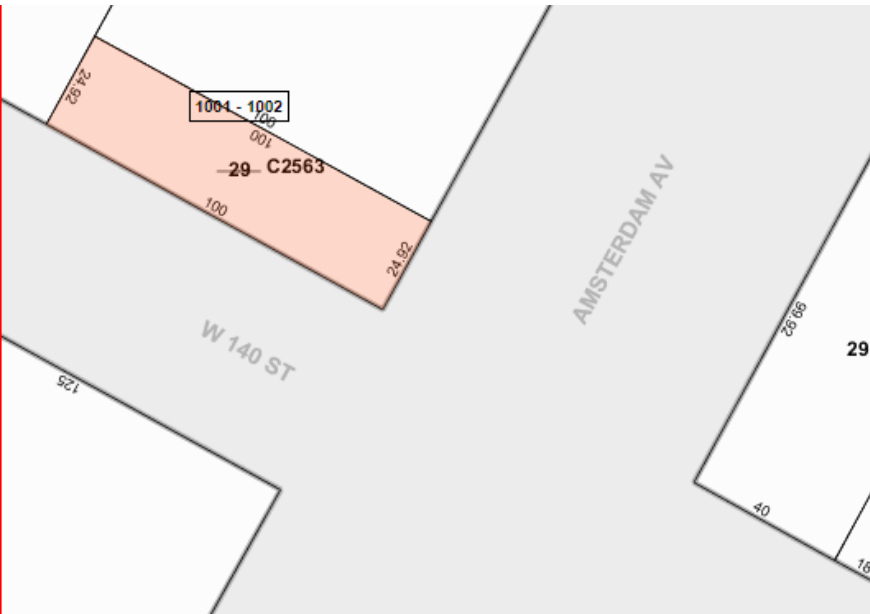
CGI rendering



FOR MORE INFORMATION, PLEASE CONTACT:



Tom Brady
Commercial Sales and Leasing
212.572.3118
tbrady@elliman.com



FOR MORE INFORMATION, PLEASE CONTACT:



Tom Brady
 Commercial Sales and Leasing
 212.572.3118
tbrady@elliman.com



FOR MORE INFORMATION, PLEASE CONTACT:



Tom Brady
Commercial Sales and Leasing
212.572.3118
tbrady@elliman.com



FOR MORE INFORMATION, PLEASE CONTACT:



Tom Brady
Commercial Sales and Leasing
212.572.3118
tbrady@elliman.com