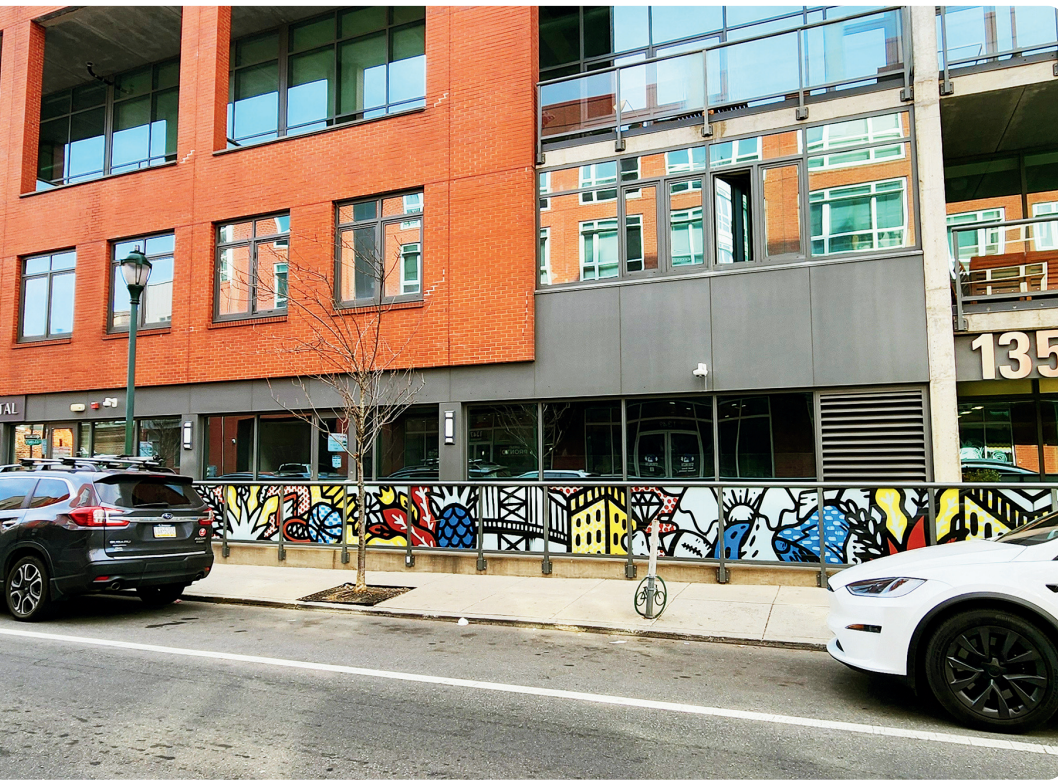


# AVAILABLE FOR LEASE



**OCF REALTY  
COMMERCIAL**  
215.735.7368



**1352 South Street, Suite C-1  
Philadelphia, PA 19147**

**3,149 Square Feet**

**Back on the Market!!**

**This incredible commercial space at 1352 Lofts has over 50 feet of frontage on the high-traffic South Street Commercial Corridor, right off of Broad Street!**

**Most recently used as a pet supply store, this space is open to a variety of uses! It includes an existing central HVAC system, one bathroom, a sprinkler system, and ADA accessibility. Five associated parking spaces within the building are also available.**

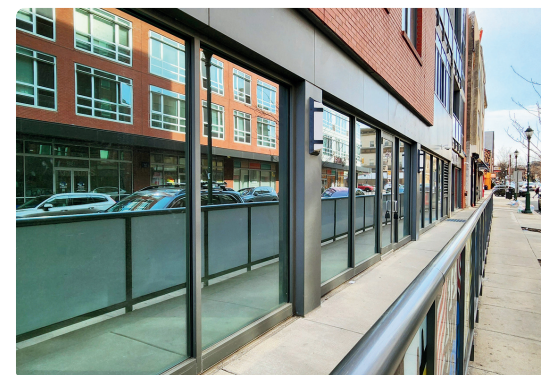
**Make this prime location the place for your business!**

## **FEATURES**

- HIGH TRAFFIC LOCATION
- GREAT TRANSIT ACCESS
- LOTS OF NATURAL LIGHT
- SPRINKLERED
- OPEN TO A VARIETY OF USES
- READY FOR FIT OUT



**Dennis Carlisle**  
**OCF Realty Commercial**  
**215.805.8620**  
**dennis@ocfrealty.com**



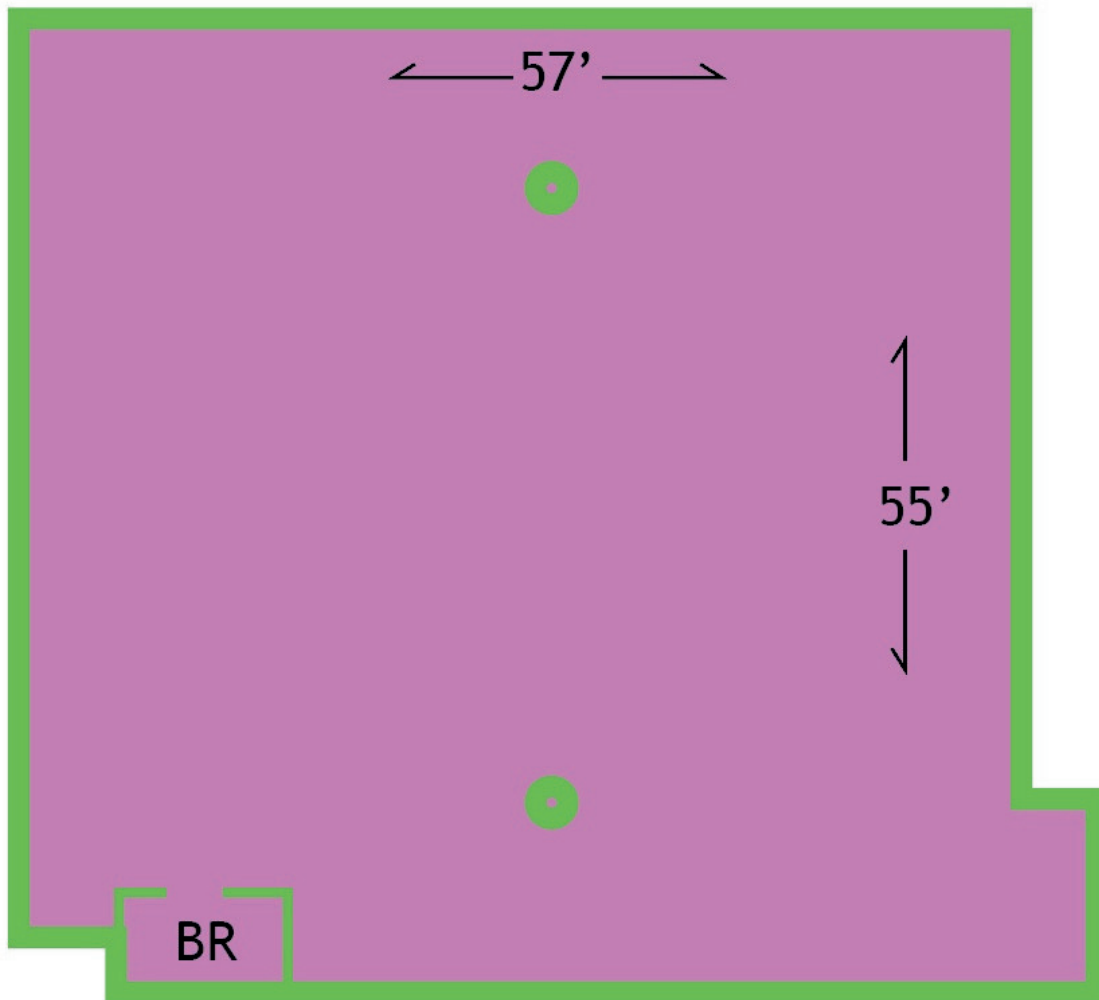
**\$20 psf NNN**





OCF REALTY  
COMMERCIAL  
215.735.7368

South Street



\*Measurements are Approximate

