

18.5–38.3 ACRES FOR SALE

16980 RT. 173, WADSWORTH, IL



A. Rick Scardino
Principal
rscardino@lee-associates.com
D 773.355.3040

John Sharpe, SIOR, CCIM, LEED-AP
Principal
jsharpe@lee-associates.com
D 773.355.3030

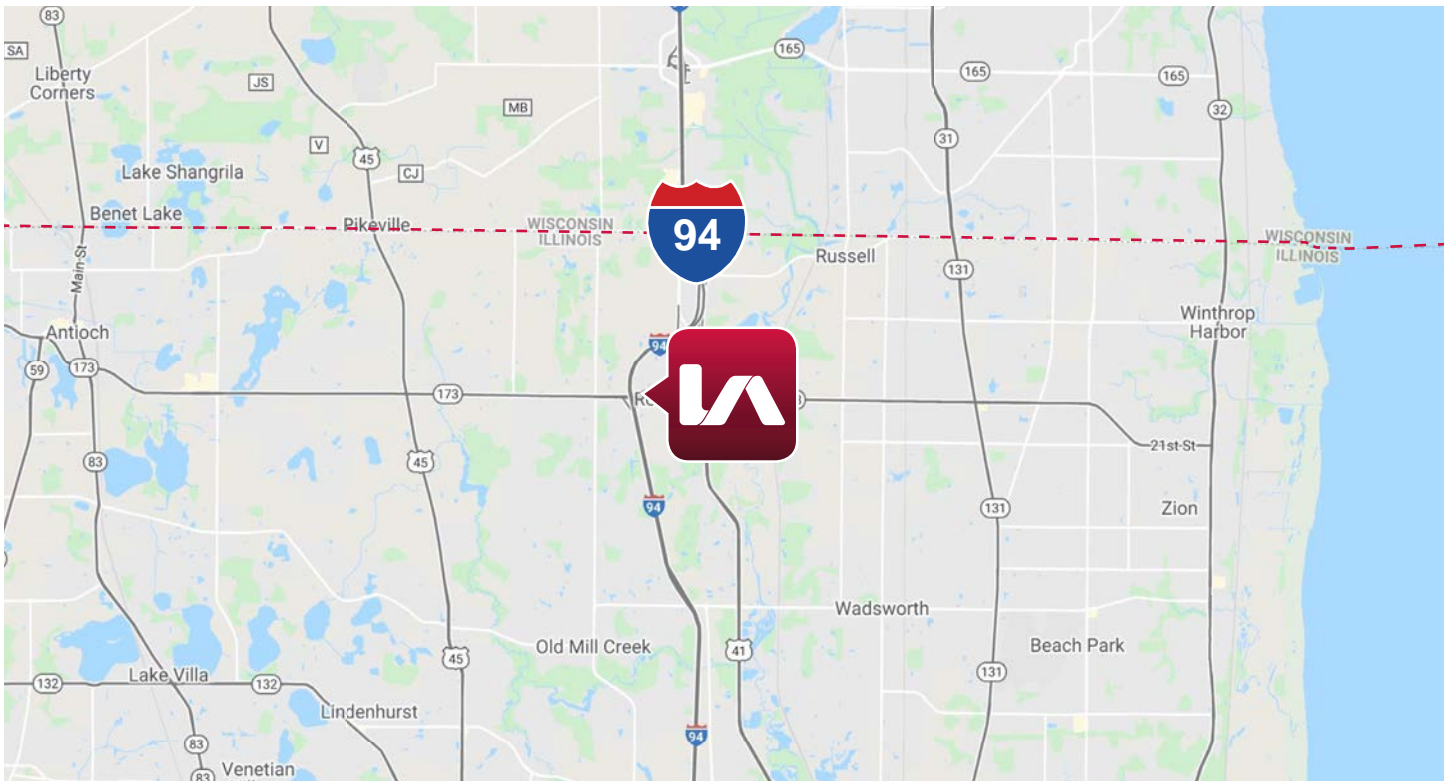
All information furnished regarding property for sale, rental or financing is from sources deemed reliable, but no warranty or representation is made to the accuracy thereof and same is submitted to errors, omissions, change of price, rental or other conditions prior to sale, lease or financing or withdrawal without notice. No liability of any kind is to be imposed on the broker herein.

AVAILABLE FOR SALE

16980 ROUTE 173

WADSWORTH, ILLINOIS | www.villageofwadsworth.org





SITE SPECIFICATIONS:

SITE SIZE: 18.5 acres

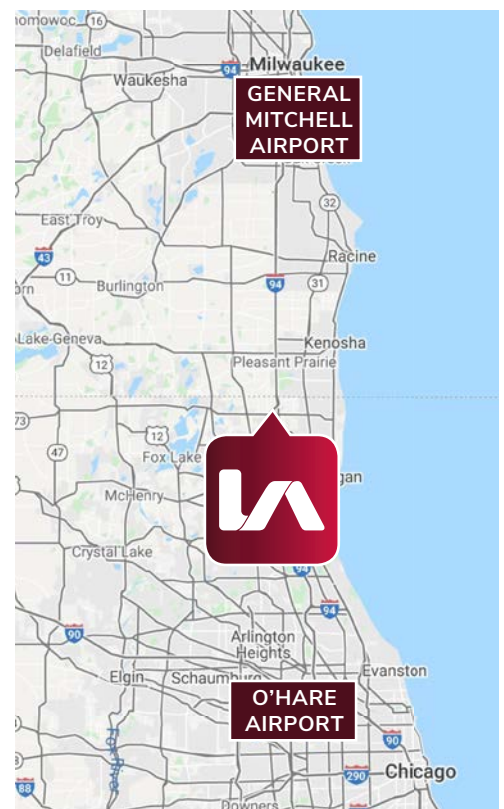
COUNTY: Lake

ZONING: Commercial (PUD)

SALE PRICE: Call agent for details

COMMENTS:

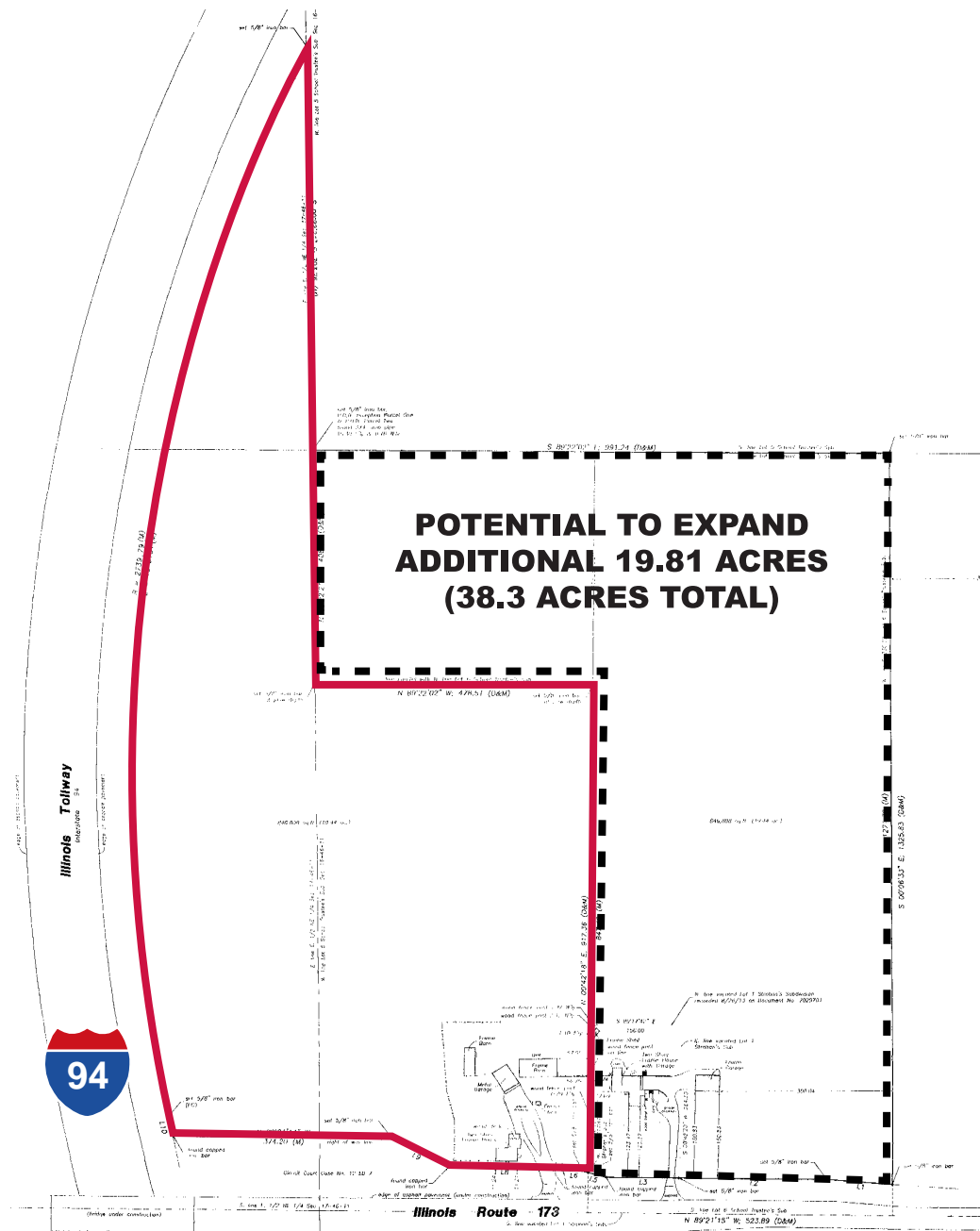
- › Located at the NEC of I-94 and Rt. 173 at the exit
- › Annexed into Wadsworth and will have a special zoning designation regulated by an intergovernmental agreement with Lake County, Zion, Wadsworth and Old Mill Creek (retail, office and light manufacturing will be allowed)
- › Surrounded by CenterPoint who will build a business park (will bring utilities to the area)
- › There is a possibility that the intersection will be improved to a four way in the future
- › Due diligence materials available upon request



AVAILABLE FOR SALE

16980 ROUTE 173

WADSWORTH, ILLINOIS | www.villageofwadsworth.org



A. Rick Scardino

Principal

rscardino@lee-associates.com

D 773.355.3040

John Sharpe, SIOR, CCIM, LEED-AP

Principal

jsharpe@lee-associates.com

D 773.355.3030

All information furnished regarding property for sale, rental or financing is from sources deemed reliable, but no warranty or representation is made to the accuracy thereof and same is submitted to errors, omissions, change of price, rental or other conditions prior to sale, lease or financing or withdrawal without notice. No liability of any kind is to be imposed on the broker herein.