



Crown Hill Plaza

- For Lease: +/- 1,010 - 2,450 SF (with patio opportunity)
- For Sale: 1.67 acre Pad Site
- ATM/Coffee Pad Site available in the parking lot

123-157 Crown Hill Road, Excelsior Springs, Missouri 64024

Kayla Hutchings

c: 913.850.9810 | o: 913.747.3325

e: kayla@fishmancommercial.com

Justin Kaufmann

c: 816.786.9131 | o: 913.747.3340

e: justin@fishmancommercial.com

Disclaimer

Information furnished regarding property is from sources deemed reliable but no warranty or representation is made as to the accuracy thereof and same is submitted subject to errors, omissions, prior sale of lease or withdrawal without notice.

Area Demographics



Total Population

5-mile	17,118
10-mile	44,501
20-mile	334,170



Household Income (Avg.)

5-mile	\$92,480
10-mile	\$104,134
20-mile	\$100,770



Median Age

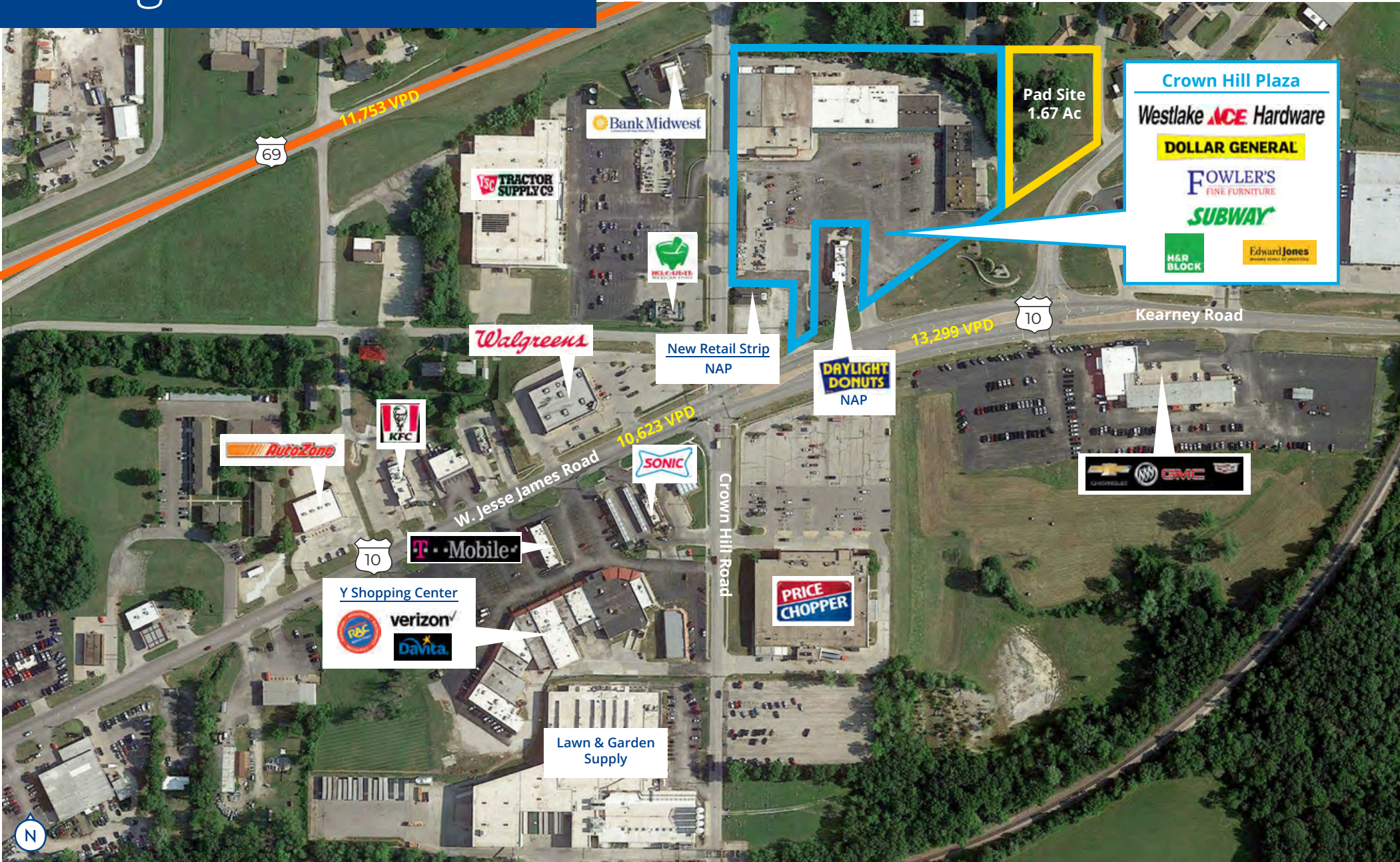
5-mile	41.7
10-mile	41.8
20-mile	38.9



Daytime Population

5-mile	14,036
10-mile	34,703
20-mile	276,265

Neighborhood Aerial





FOR LEASE

Crown Hill Plaza

123-157 Crown Hill Road, Excelsior Springs, Missouri 64024

CONTACT:

Kayla Hutchings

c: 913.850.9810 | o: 913.747.3325
e: kayla@fishmancommercial.com

Justin Kaufmann

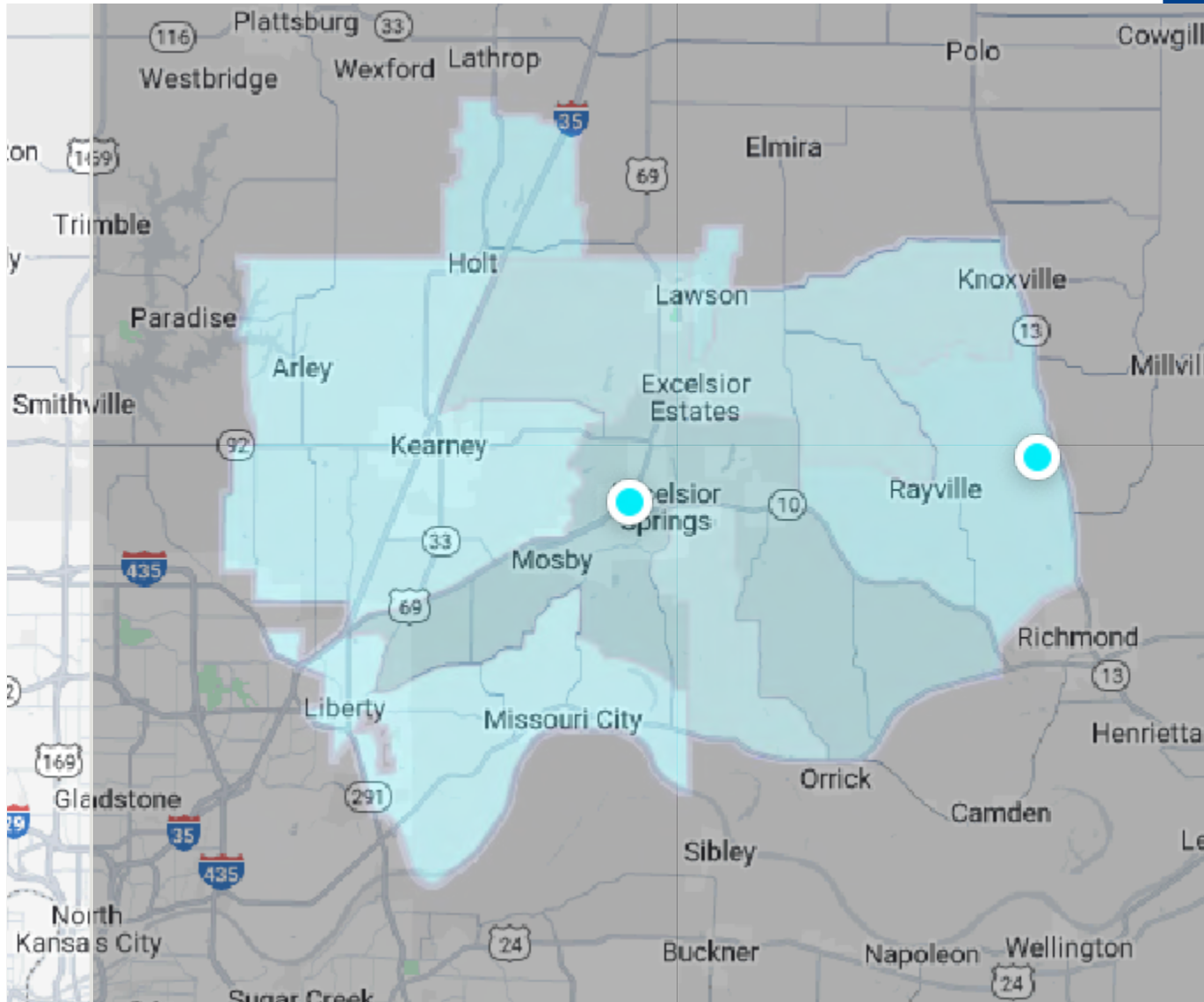
c: 816.786.9131 | o: 913.747.3340
e: justin@fishmancommercial.com

AVAILABLE SPACES:

- 127 Crown Hill Rd*	+/- 1,010 sf
- 129 Crown Hill Rd*	+/- 1,440 sf
- 141-143 Crown Hill Rd	+/- 1,800 sf
- 153 Crown Hill Rd	+/- 1,600 sf

*Can be combined for a total of 2,450 sf

Trade Area Demographics



Source: Advan



Total Population

75,702



Total Households

28,322



Bachelor's Degree

21.7%



Median Household
Income

\$86,298