

1001 E CHAPMAN AVE

Fullerton, CA 92831

FOR SALE - MEDICAL OFFICE BUILDING



ASKING PRICE
\$3,800,000



WILSHIRE
ADVISORY GROUP

HIGHLIGHTS

LOCATION

On a Major Street in
Fullerton's Redevelopment Area

5-Minute Drive from SR-57 and SR-91

OFFICES

One Dental Office

One Medical Office (Month-to-Month)

One Vacant Office

ROOM FEATURES

Spacious Waiting Room and Reception Areas

Separate Bathrooms in Each Unit

Suite C has Two Separate Rooms and a Bathroom

PARKING

26 Spaces Located Behind the Building

SPACE DETAILS

Asking Price

\$3,800,000

Year Built

1962

Buiding Size

± 6,085 SF

No. of Units

4
(2 of the units are merged into the dental office and can be seperated)

Land Size

± 0.47 AC
± 20,277 SF
(per title)

Parking

26

Zoning

O-P

County

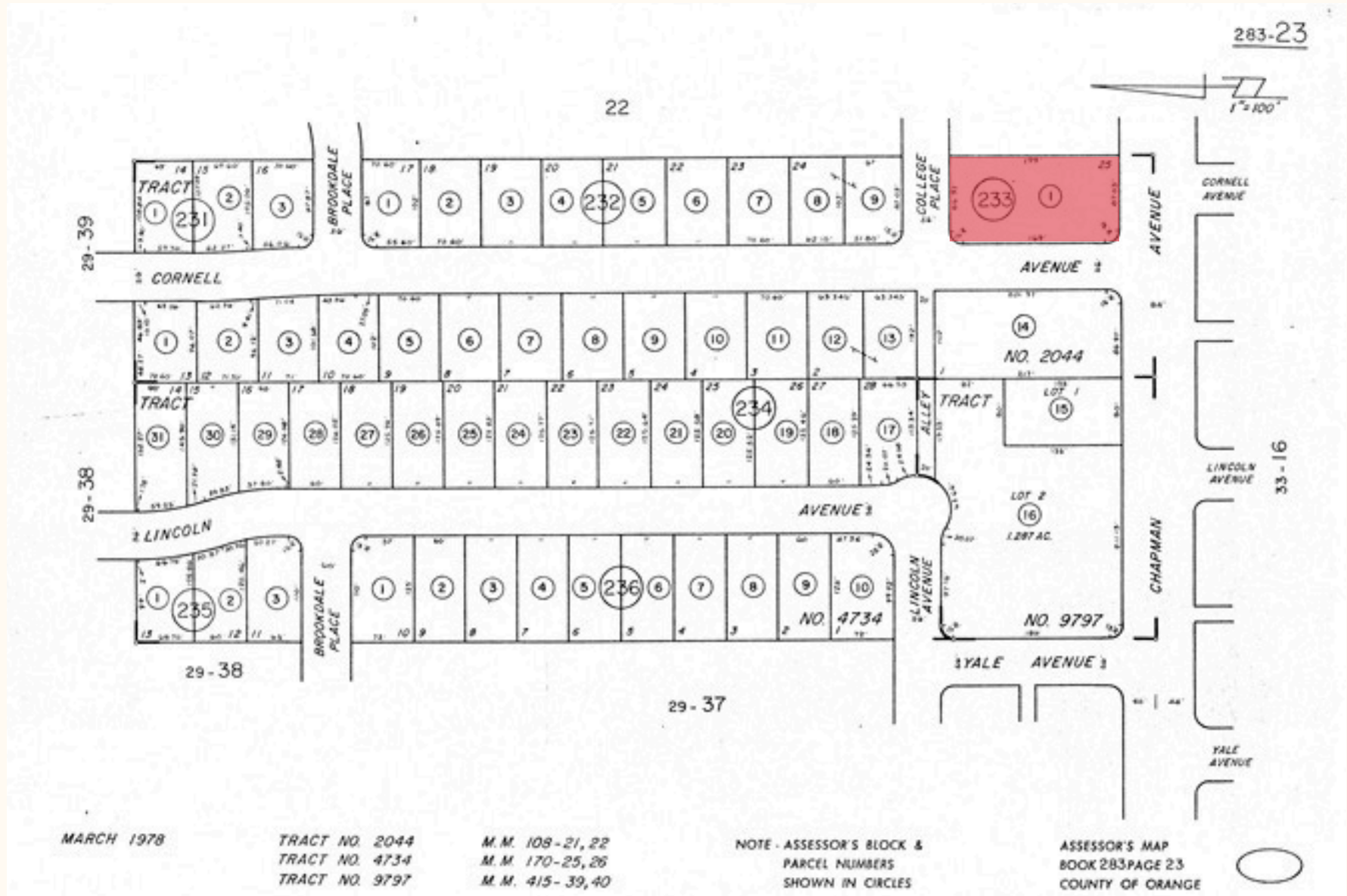
Orange

APN

283-233-01

*Square footage and number of units to be verified by Buyer ****

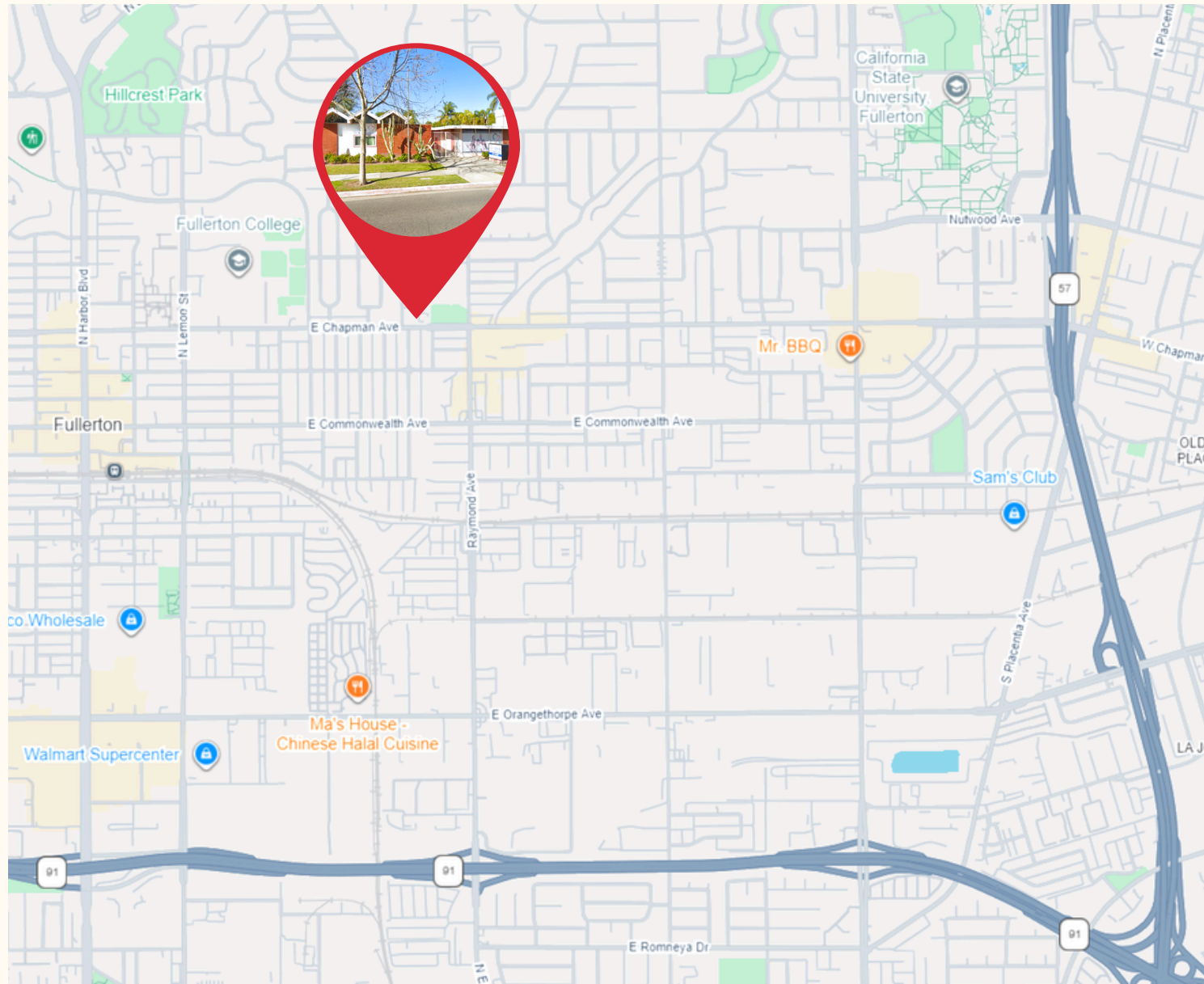
PLAT MAP



AERIAL VIEW



MAP VIEW



INTERIOR PHOTOS

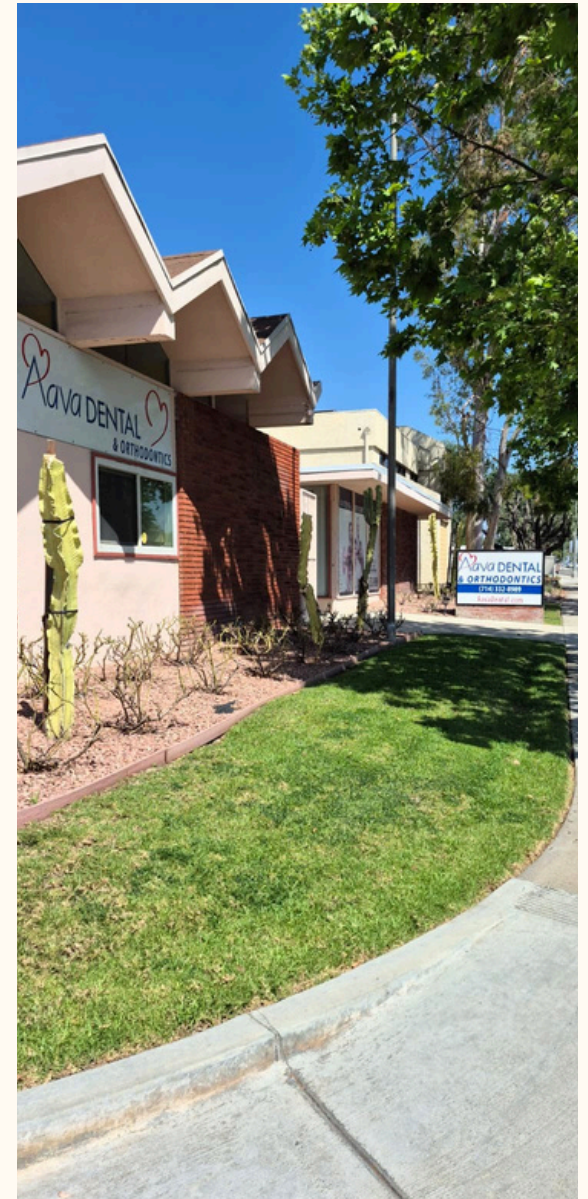


DENTAL SPACE



Dental Practice is not included and to be sold separately.

EXTERIOR PHOTOS



1001 E CHAPMAN AVE

Fullerton, CA 92831

CONTACT INFORMATION

CRAIG MILLER

310.202.9008 x 101

craig@wilshireag.com

DRE# 01006713