



PEARTREE SQUARE

SHOPPING CENTER

Located at 691 Co-op City Blvd, Co-op City, Bronx NY

Supermarket Anchored Suburban Style Shopping Center
With 600+ Parking Spaces In The Heart Of The Bronx

UP TO 6,000 SF AVAILABLE



PEARTREE SQUARE SHOPPING CENTER

Nestled in the vibrant community of Co-op City in the Bronx, Peartree Square Shopping Center stands as a substantial retail haven spanning 141,000 square feet. Conveniently situated directly across from the Co-op City residential development on the intersection of Co-op City Boulevard and Peartree Avenue, this suburban shopping hub has become a lively destination catering to a diverse range of needs and leisurely pursuits.

The center boasts an extensive selection of stores and services, ranging from well-known retail giants such as Stop and Shop, Walgreens, and Advanced Auto Parts to charming local boutiques. Peartree Square Shopping Center strives to provide a comprehensive retail experience, ensuring that patrons can effortlessly find everything from groceries and apparel to electronics and beyond.

With up to 6,000 square feet of prime retail space available, the site offers convenient access to 600 parking spaces and boasts high street signage visibility. Its strategic location not only provides access to a bustling community of 50,000+ Co-op City residents, but also places it in close proximity to major transportation arteries, including I-95 and the Hutchinson River Parkway. This positions Peartree Square Shopping Center as an ideal opportunity for retail tenants across a spectrum of uses.

CO-OP CITY, THE BRONX

	1 MILE	3 MILE	5 MILE
TOTAL POPULATION	49K	499K	1.3M
TOTAL HOUSEHOLDS	20K	187K	491K
DAYTIME POPULATION	41K	431K	1.1M
AVG. HOUSEHOLD INCOME	\$81K	\$91K	\$88K
TOTAL CONSUMER RETAIL SPENDING	\$43	\$4.3B	\$11B

ALL IN THE NUMBERS

**Demographics stats above are miles radius from site*

THE OPPORTUNITY



AVAILABLE SPACES DETAILS

Size

Space A 2,817 SF
Space B 6,000 SF

Possession

Space A Vacant
Space B Arranged

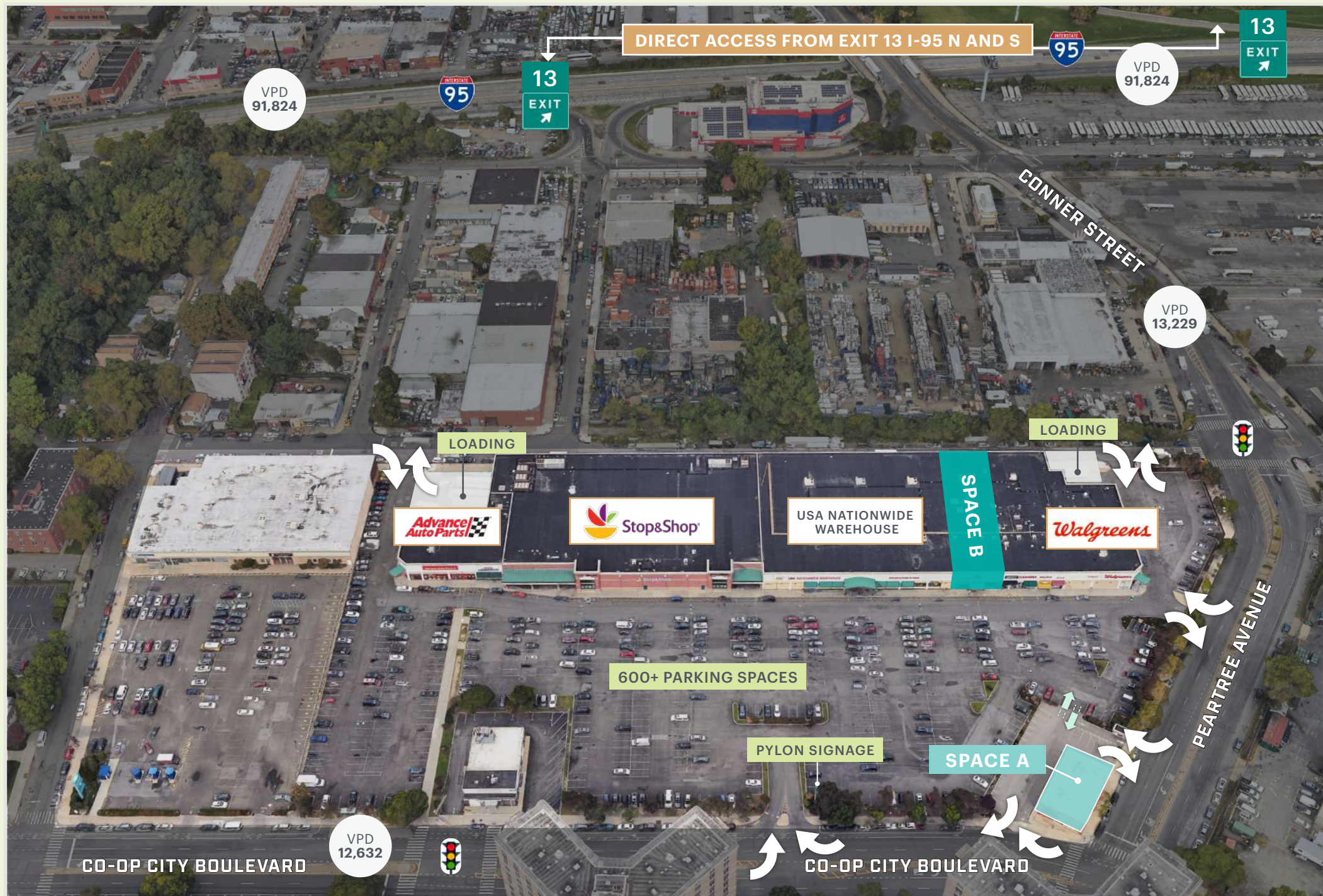
Status

Space A Formerly Chase Bank
Space B Currently Bobo's Crab Shack

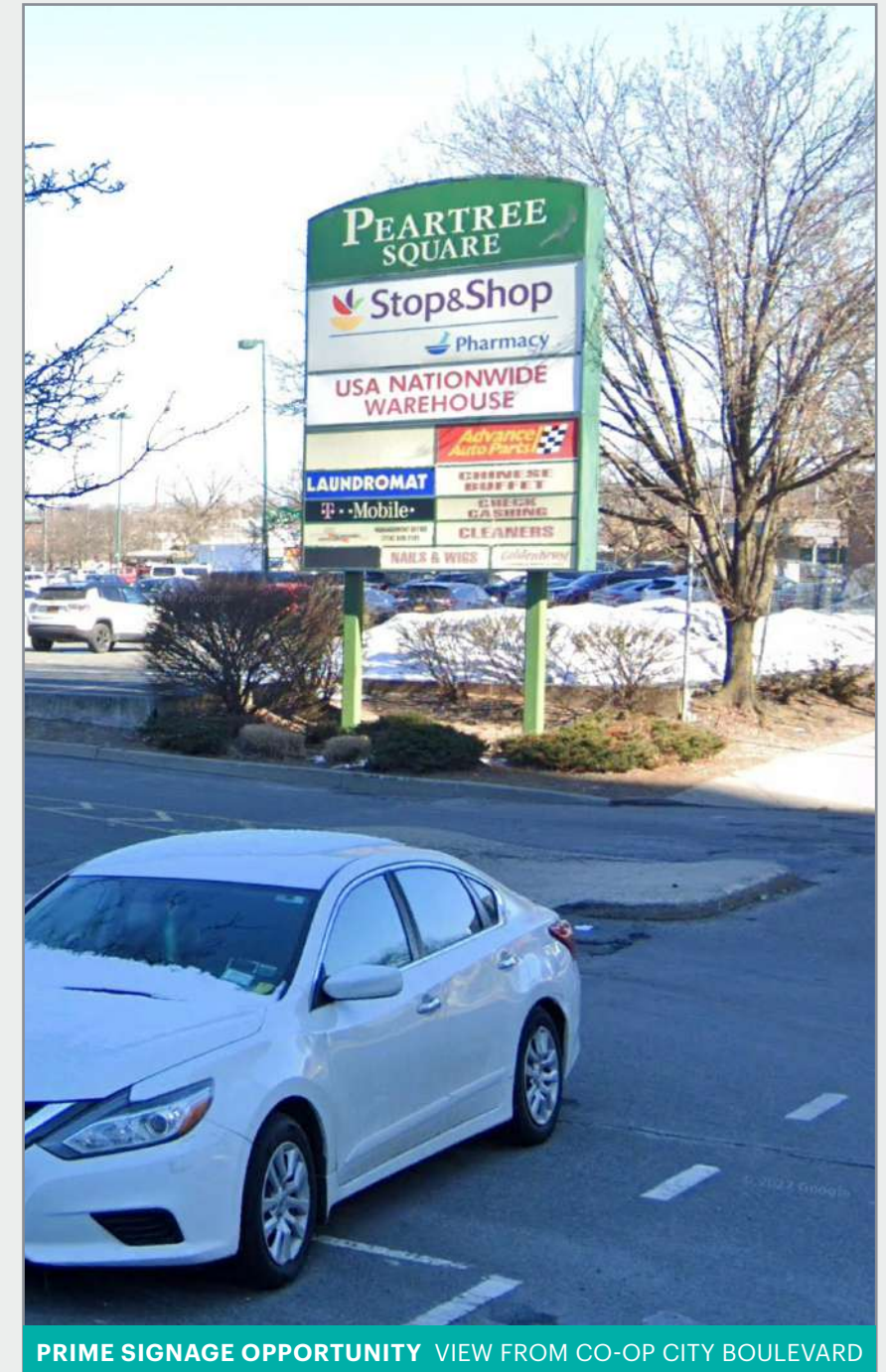
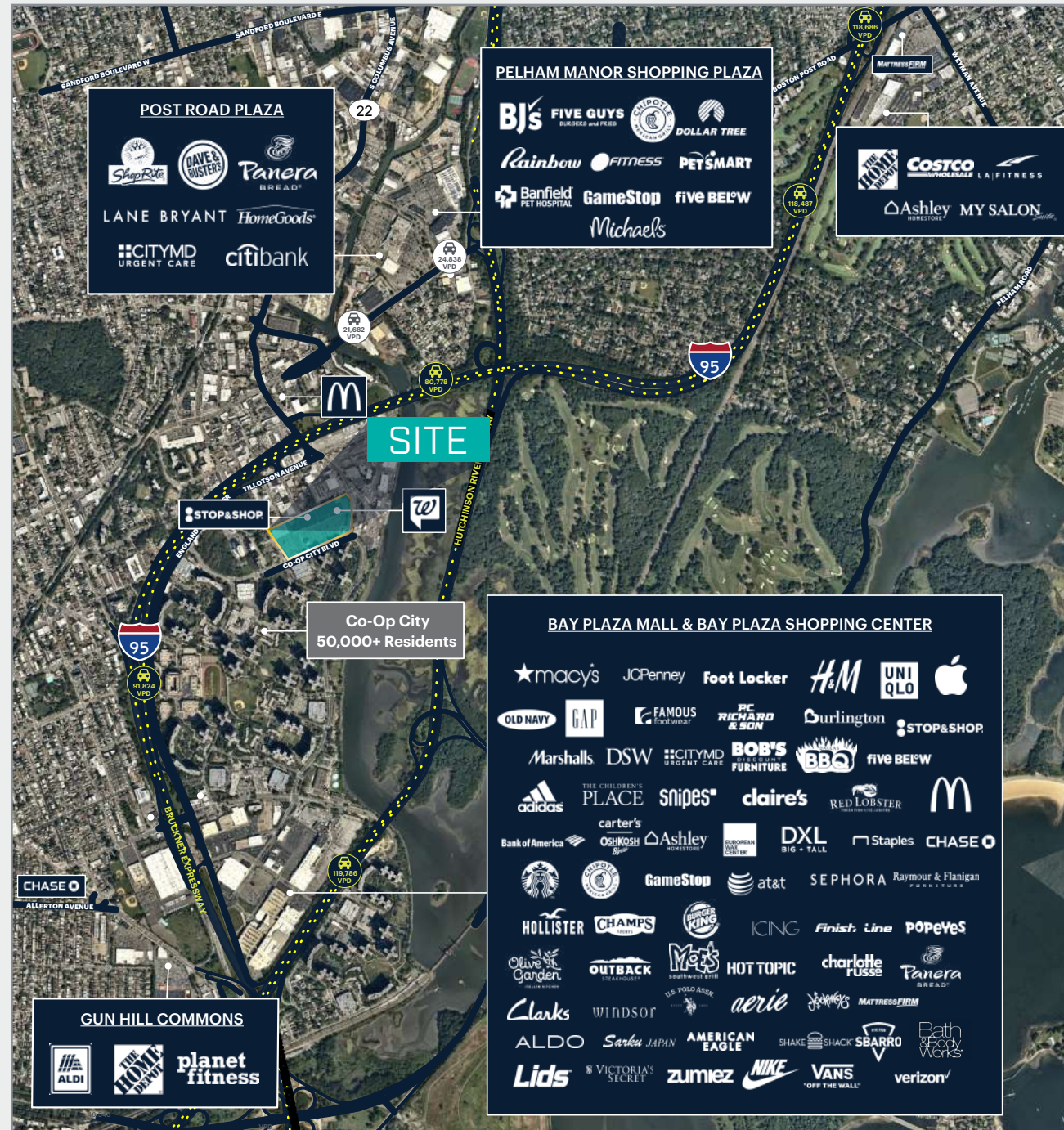


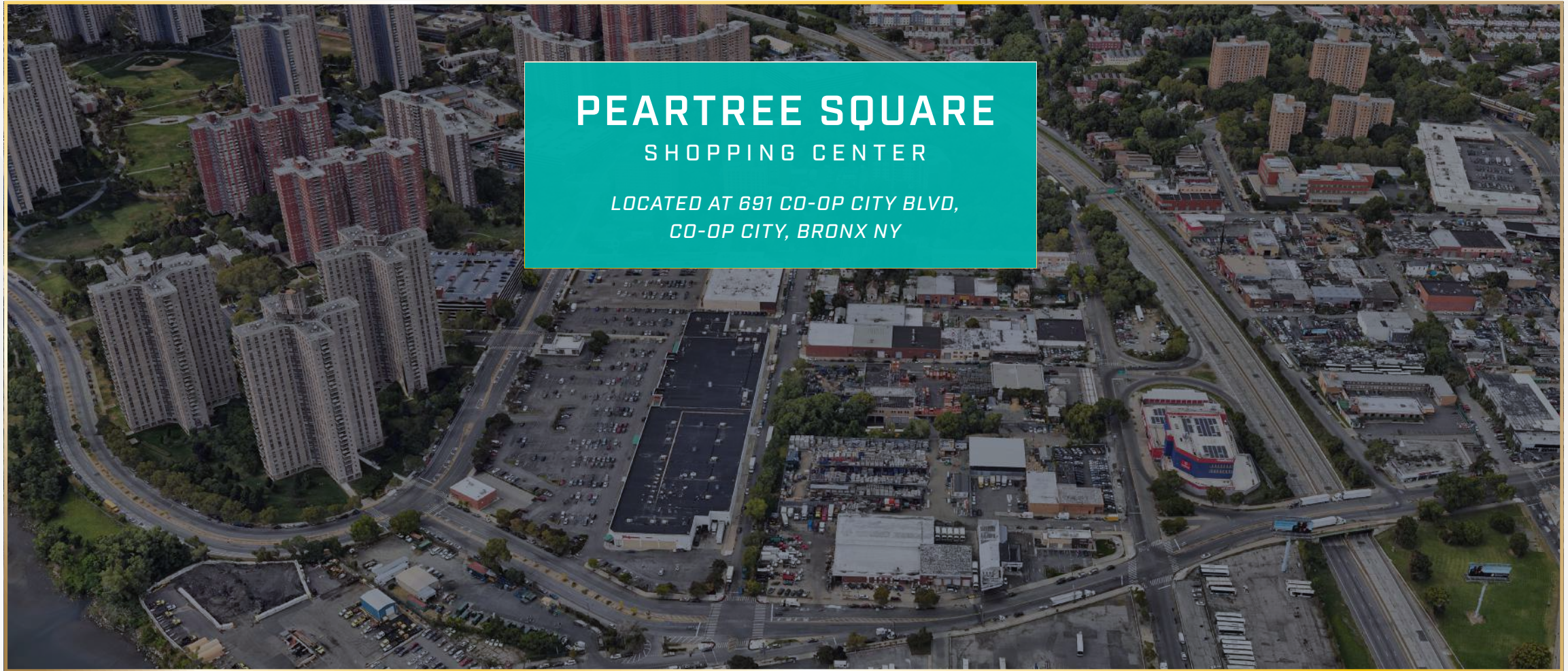
DIRECTLY ACROSS FROM CO-OP CITY WITH ACCESS TO 50,000+ RESIDENTS

SITE ACCESS + TRANSPORTATION MAP



SHOPPING CENTERS MAP + SIGNAGE





PEARTREE SQUARE

SHOPPING CENTER

*LOCATED AT 691 CO-OP CITY BLVD,
CO-OP CITY, BRONX NY*

CONTACT EXCLUSIVE AGENTS

MILES MAHONY

mmahony@ricpony.com

CHRIS WALTER

cwalther@ricpony.com

RIPCO
REAL ESTATE

32 Court Street
10th Floor
Brooklyn, NY 11201
718.233.6565

Please visit us at [ricpony.com](https://www.ricpony.com) for more information.

This information has been secured from sources we believe to be reliable, but we make no representations as to the accuracy of the information. References to square footage are approximate. Buyer must verify the information and bears all risk for any inaccuracies.

ONE EAST HARLEM