

Single Story Commercial/Office Condo For Sale

1954 O'Toole Way, San Jose 95131



Meacham/Oppenheimer, Inc.
8 N San Pedro St. #300
San Jose, CA 95110
Tel. 408-378-5900
www.moinc.net

DAVID TAXIN
Partner
+1 408 966 5919
dtaxin@moinc.net
Lic. 00983163

BOBBY FACCHINO
Senior Associate
+1 408 318 0623
bobby@moinc.net
Lic. 02178873

Beautifully Renovated & Move-In Ready

Available Space: 768± SF

Listing price: \$339,000 (\$442 PSF)

Parking: 3 Spaces

Property Highlights:

- Fully Remodeled & Vacant – Ready For Immediate Move-in
- End Unit – No Neighbors Above Or On One Side For Added Privacy
- Professionally Managed HOA With On-site Staff For Peace Of Mind
- Monthly HOA Fees: \$240.02

Recent Upgrades Include:

- Brand-new Flooring Throughout
- Modern Kitchen & Bath With New Cabinets, Countertops & Fixtures
- Energy-efficient Bosch Tankless Water Heater
- New HVAC System For Year-round Comfort
- Fresh, Neutral Interior Paint

PHOTOS



PHOTOS



The Information contained herein has been obtained from sources we deem reliable. We cannot, however, assume responsibility for its accuracy.

PHOTOS



PARCEL MAP



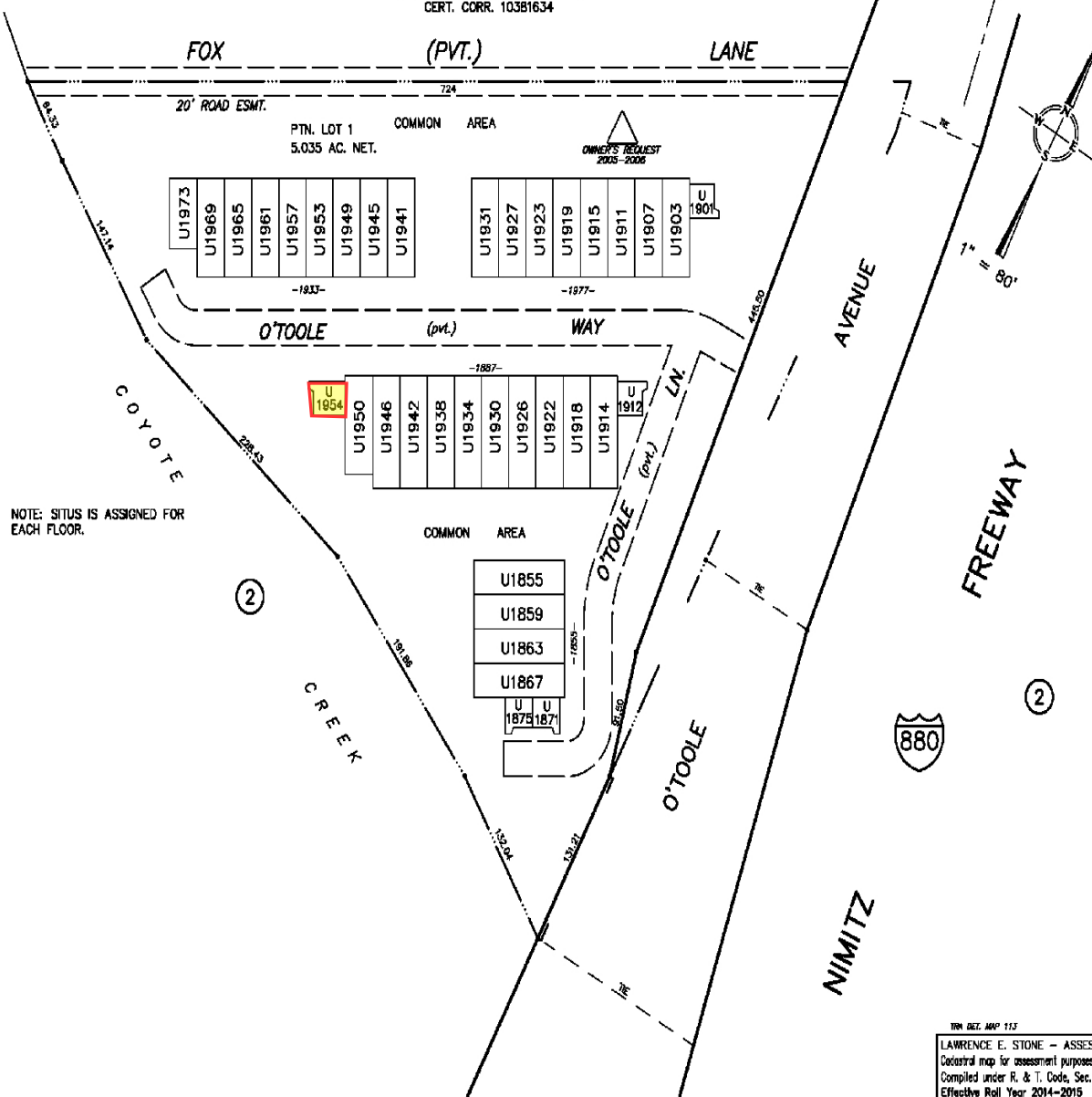
OFFICE OF COUNTY ASSESSOR — SANTA CLARA COUNTY, CALIFORNIA

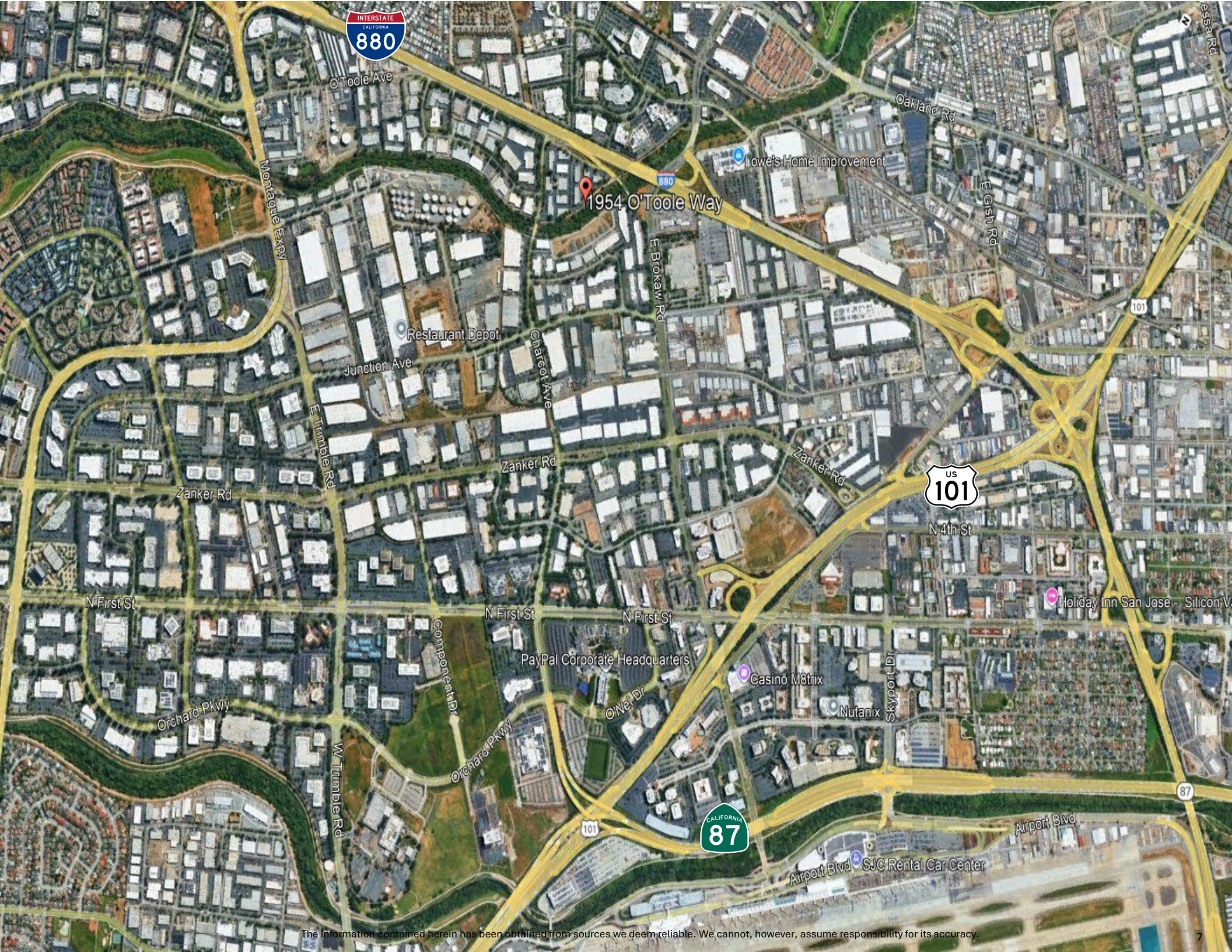
② TRACT NO. 7324
AMENDED CONDO
RIVERSIDE BUSINESS PARK
CERT. CORR. 10381634

BOOK
237
PAGE
32

CC&R 18434588

UNIT	FLR.	APN	SITUS
1973	1	38	1973/1975
1969	1,2	39	1969/1971
1965	1,2	40	1965/1967
1961	1,2	41	1961/1963
1957	1,2	42	1957/1959
1953	1,2	43	1953/1955
1949	1,2	44	1949/1951
1945	1,2	45	1945/1947
1941	1,2	46	1941/1943
1931	1,2	47	1931/1933
1927	1,2	48	1927/1929
1923	1,2	49	1923/1925
1919	1,2	50	1919/1921
1915	1,2	51	1915/1917
1911	1,2	52	1911/1913
1907	1,2	53	1907/1909
1903	1,2	54	1903/1905
1901	1	55	1901
1954	1	56	1954
1950	1,2	57	1950/1952
1946	1,2	58	1946/1948
1942	1,2	59	1942/1944
1938	1,2	60	1938/1940
1934	1,2	61	1934/1936
1930	1,2	62	1930/1932
1926	1,2	63	1926/1928
1922	1,2	64	1922/1924
1918	1,2	65	1918/1920
1914	1,2	66	1914/1916
1912	1	67	1912
O'TOOLE LANE			
1855	1,2	68	1855/1857
1859	1,2	69	1859/1861
1863	1,2	70	1863/1865
1867	1,2	71	1867/1869
1875	1	72	1973
1871	1	73	1971





DEMOGRAPHICS



2025 SUMMARY	1-MILE	3-MILE	5-MILE
Population	10,230	182,207	541,262
Households	3,462	64,500	184,843
Average Household Size	2.87	2.73	2.83
Owner Occupied Housing Units	1,696	25,753	77,728
Renter Occupied Housing Units	1,766	38,747	107,115
Median Age	37.5	35.5	36.4
Median Household Income	\$170,240	\$176,803	\$151,970
Average Household Income	\$207,672	\$214,127	\$194,904

1954 O'Toole Way, San Jose 95131



Meacham/Oppenheimer, Inc.
8 N San Pedro St. #300
San Jose, CA 95110
Tel. 408-378-5900
www.moinc.net

DAVID TAXIN
Partner
+1 408 966 5919
dtaxin@moinc.net
Lic. 00983163

BOBBY FACCHINO
Senior Associate
+1 408 318 0623
bobby@moinc.net
Lic. 02178873