

# ROMULUS CORPORATE PARK

32250 Smith Road

Romulus, Michigan



±243,800 SF Class A Speculative Industrial Building

Ready for Occupancy

**NEWMARK**

DAN LABES  
248-357-6578  
dan.labes@nrmk.com

 **SCANNELL**  
PROPERTIES

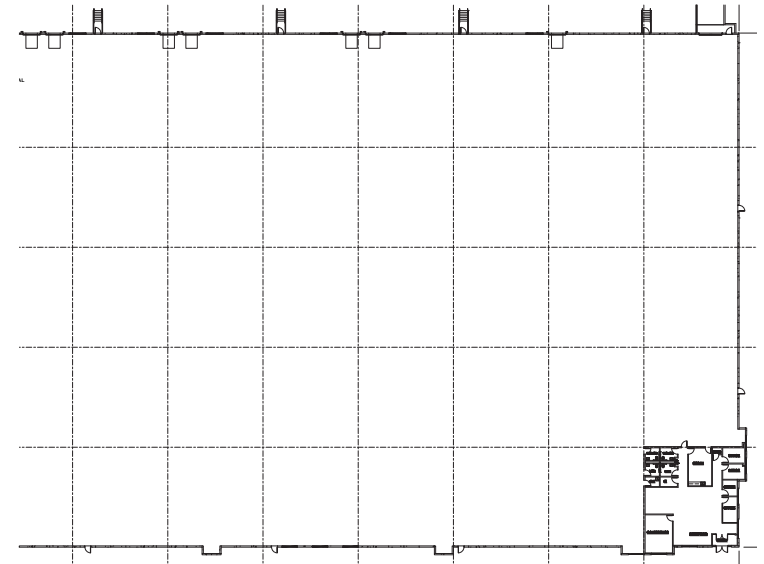
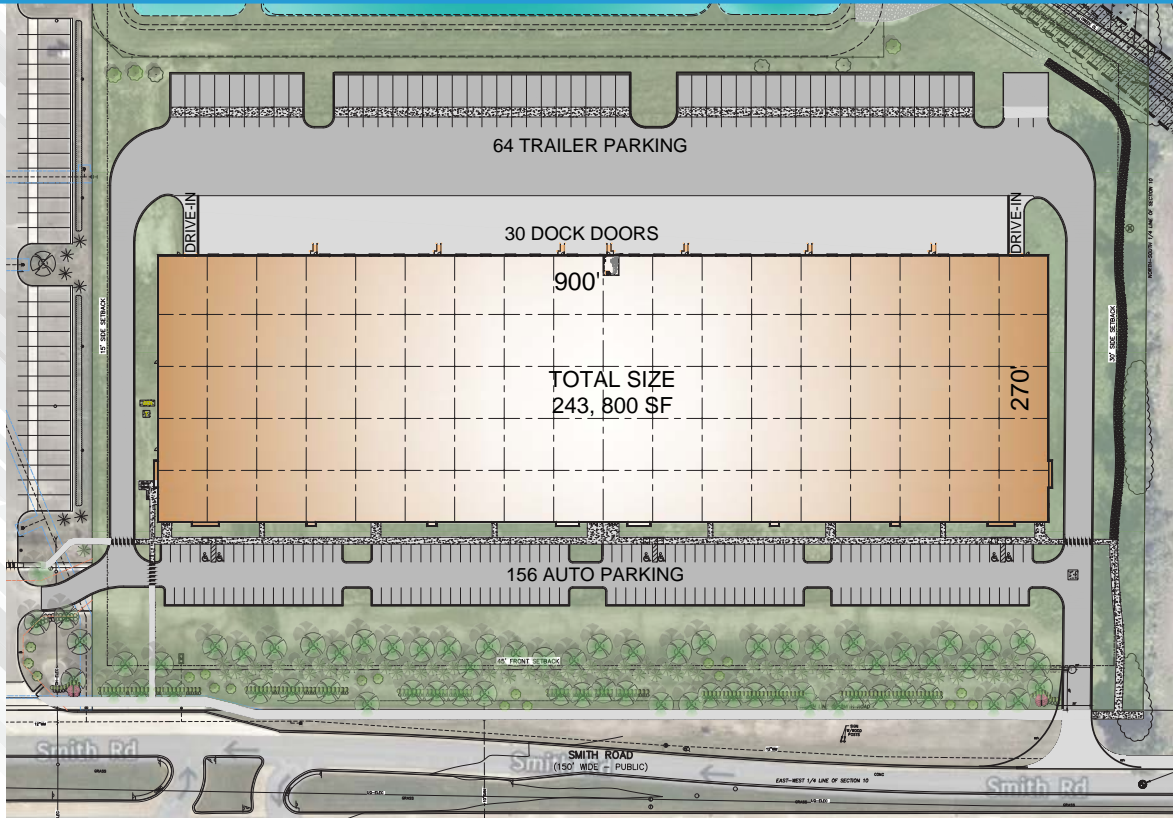
**Building Dimensions:** 270' x 900'  
**Building SF:** ±243,800  
**Lot Size:** ±22.4 acres  
**Column Spacing:** 52.5' x 50' with a 60' speed bay  
**Clear Height:** 32'  
**Dock Doors:** 30  
**Drive-in Doors:** 2

**Auto Parking:** Up to 156 spaces  
**Trailer Parking:** 64 spaces  
**Fire Protection:** ESFR sprinkler system  
**Lighting:** LED  
**Power:** 480 Volt/3 Phase  
**Floor:** 7" slab on grade  
**Roof:** 45 mil TPO



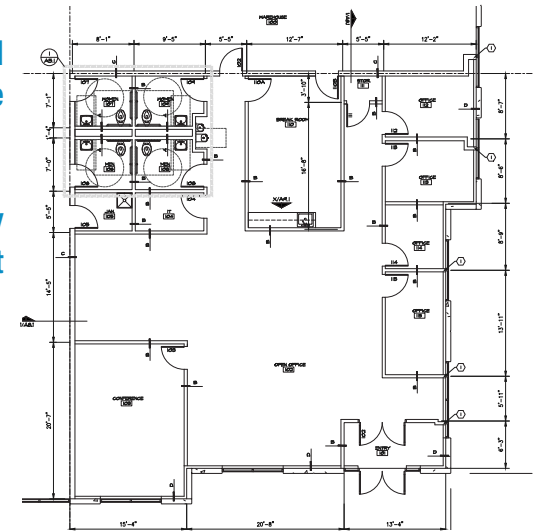
# Site Plan

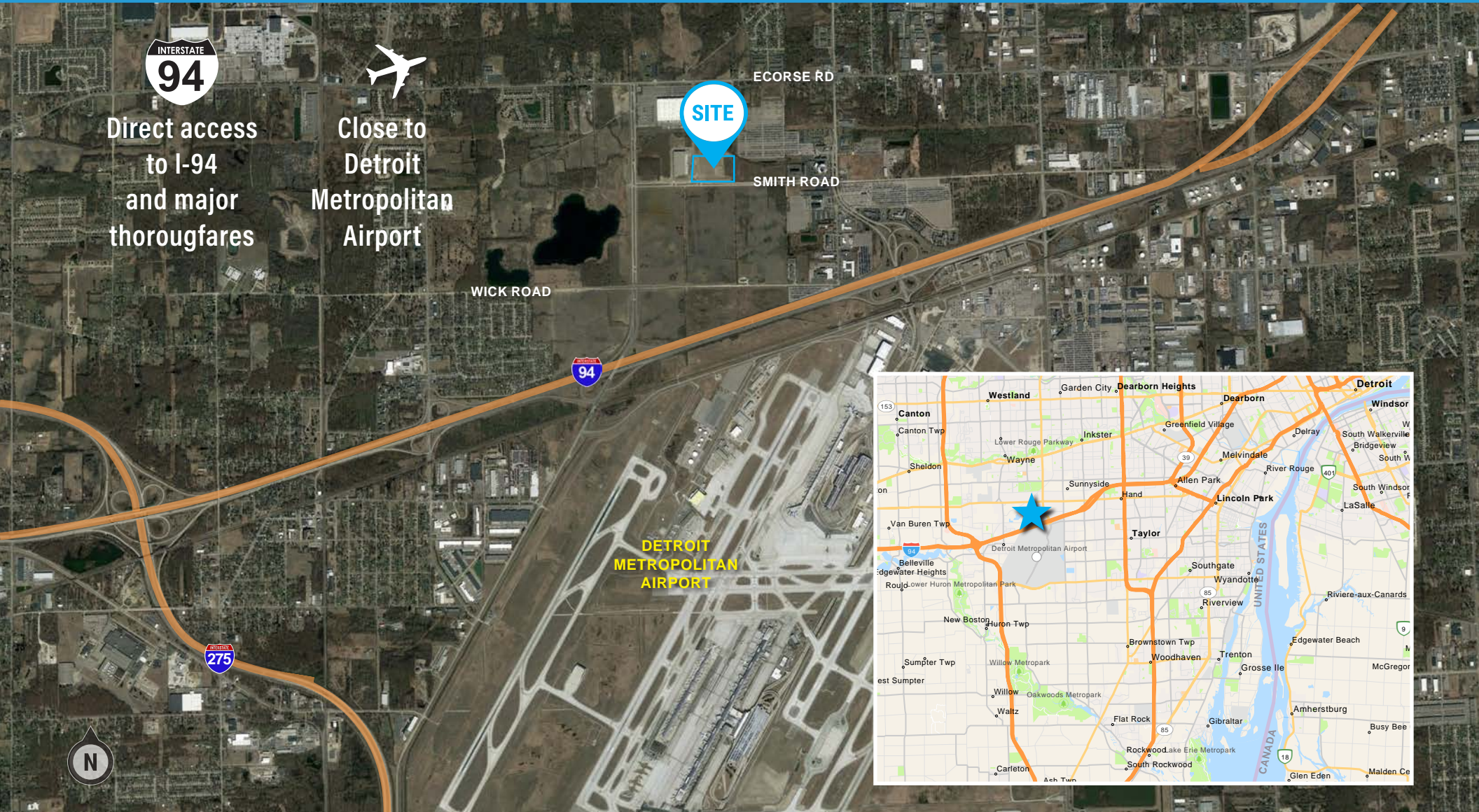
32250 Smith Road | Romulus, MI



Permitted  
Office

Can Modify  
to Suit





DAN LABES  
248-357-6578  
dan.labes@nrmk.com

27725 Stansbury Blvd., Suite 300, Farmington Hills, MI

nrmk.com



The information contained herein has been obtained from sources deemed reliable but has not been verified and no guarantee, warranty or representation, either express or implied, is made with respect to such information. Terms of sale or lease and availability are subject to change or withdrawal without notice.