

FOR SALE
236 NE KNOTT STREET
PORTLAND, OR 97212



Apex Real Estate Partners
415 NW 11th Avenue, Portland, OR 97209
p. 503.595.2840 / www.apexcre.com

Wes Mallard, Broker
541.556.7586
Wes@apexcre.com

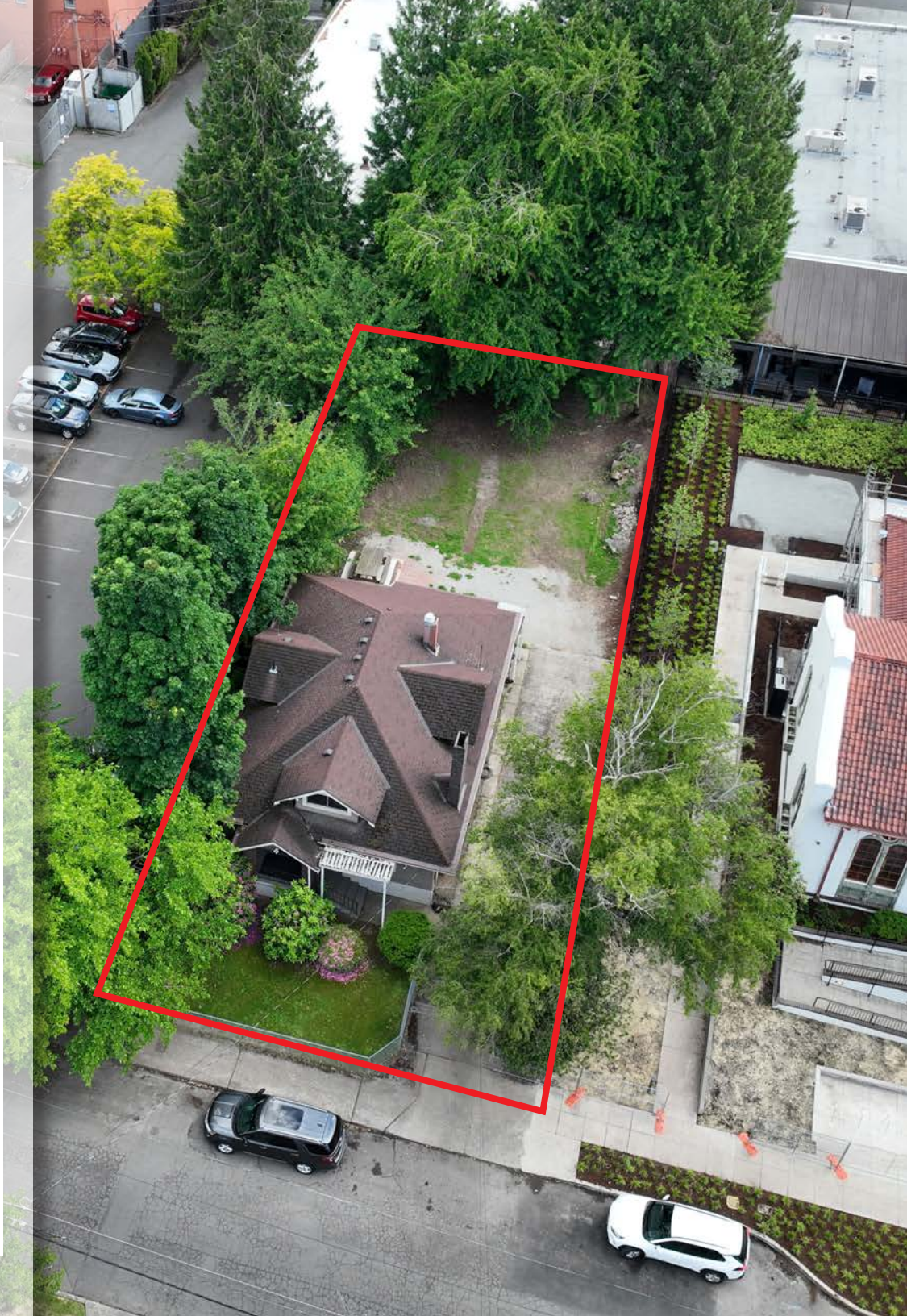
Brianna Hill, Broker
503.709.8791
Brianna@apexcre.com



Highlights

Property Type:	Single Family Residence
Property Size:	± 2,565 SF
Bedrooms:	4
Bathrooms:	2
Stories:	3
ADU:	1 ADU in lower level
Fireplace:	Yes
Year Built:	1909
Land Size:	± 0.17 AC / 7,500 SF
Zoning:	CM3 - Commercial Mixed Use 3
Enterprise Zone:	Yes
Comp Plan:	MU-U - Mixed Use Urban Center
Conservation District:	Eliot Conservation - ET
Plan District:	Albina Community - AC
Historic Resource:	Contributing
TIF:	Interstate Corridor
Parcel:	R102183

No warranty or representation, express or implied, is made as to the accuracy of the information contained herein, and same is submitted subject to errors, omissions, change of price, rental or other conditions, withdrawal without notice, and to any special listing condition imposed by our principals.

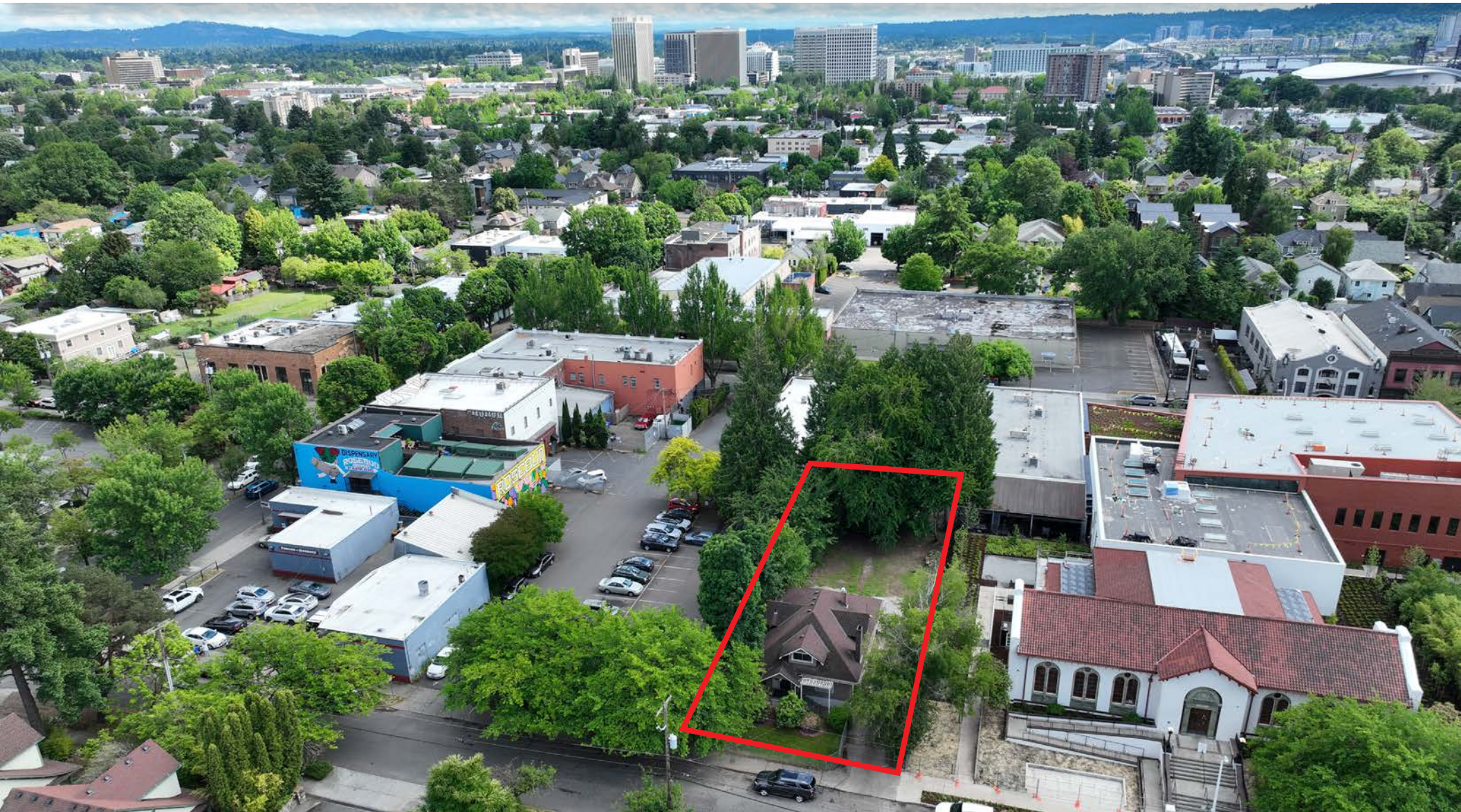


Great Portland Location

236 NE Knott St is located in Portland's Eliot Conservation District, known for its historic charm and architectural character. The Eliot neighborhood is vibrant and growing, with ongoing redevelopment bringing new housing, shops, restaurants, and mixed-use projects.

Surrounded by local amenities and close to the popular Mississippi and Williams/Vancouver corridors, the area offers excellent walkability, bike access, and public transit options.

Flexible zoning allows for residential, retail, or office use, making this a unique opportunity in a dynamic, well-connected neighborhood.



Convenient Location

