



**Moses Tucker**  
PARTNERS

**Little Rock (HEADQUARTERS)**  
200 River Market Ave, Suite 300  
Little Rock, AR 72201  
501.376.6555

**Bentonville (BRANCH)**  
805 S Walton Blvd, Suite 123  
Bentonville, AR 72712  
479.271.6118

# RETAIL BUILDING FOR SUBLEASE

## 1690 Center Street, Lonoke, AR



**CONTACT US TODAY**  
501.376.6555 | [mosestucker.com](https://www.mosestucker.com)



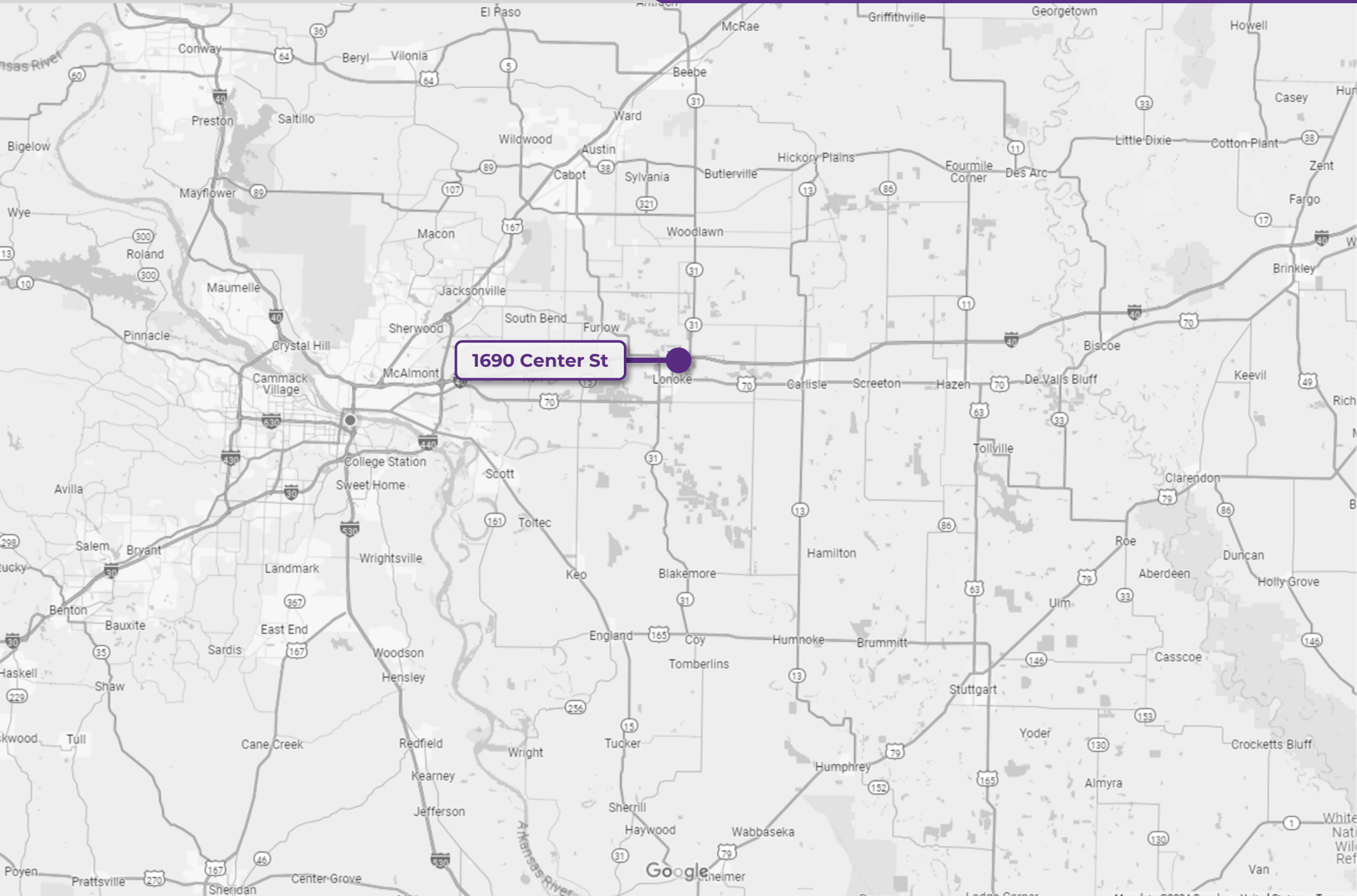
## OFFERING SUMMARY

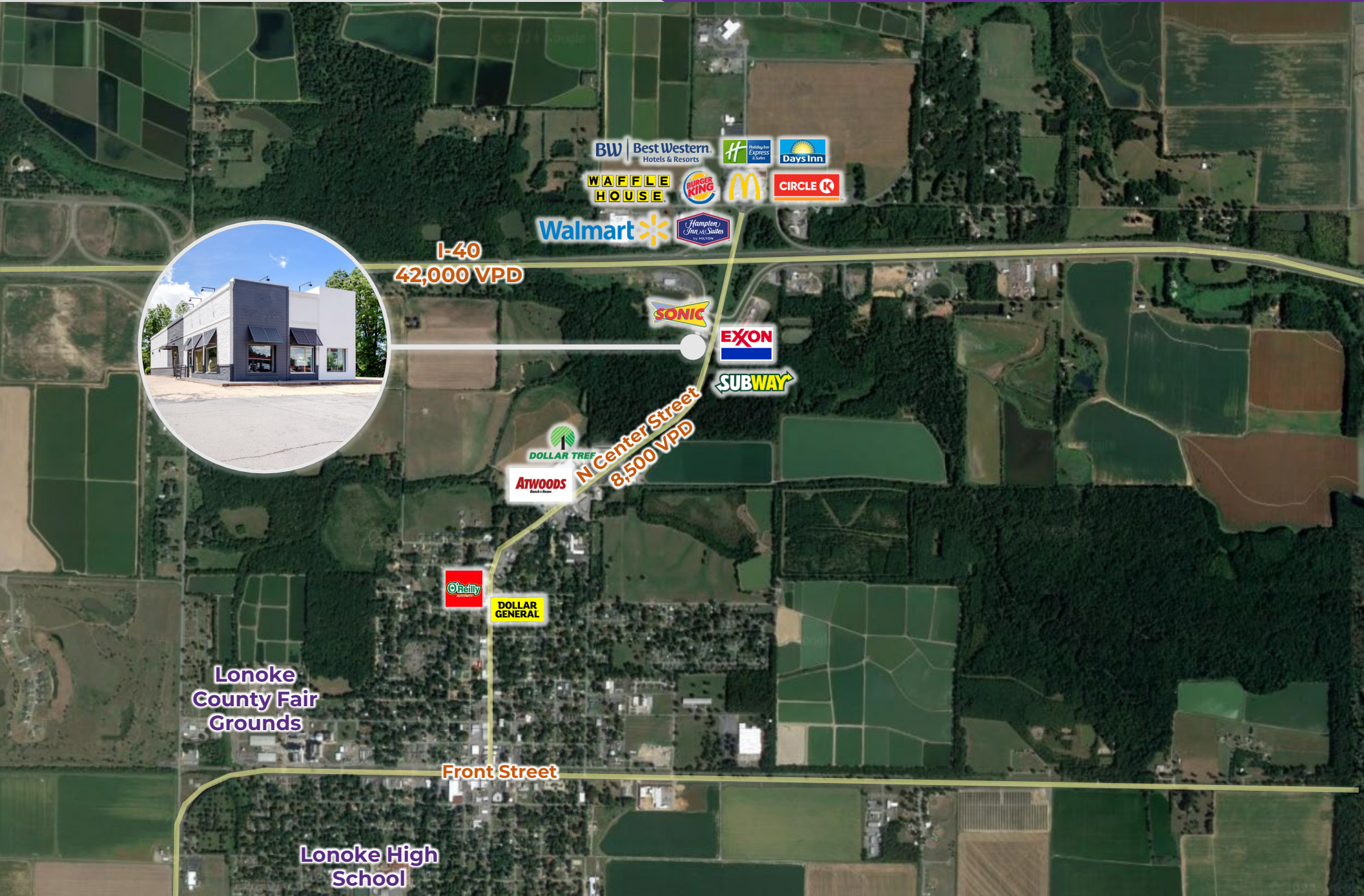
<b>Offering</b>	For Sublease
<b>Address</b>	1690 Center Street, Lonoke, AR 72086
<b>Property Type</b>	Retail Building
<b>Lease Rate</b>	Negotiable
<b>Available SF</b>	±2,805 SF
<b>Year Built</b>	2006
<b>Lot Size</b>	±5.40 Acres

## PROPERTY HIGHLIGHTS

- Premium location near I-40 (42,000 VPD)
- Great visibility along Center Street and convenient access from I-40
- Potential users include retail and QSR











## LONOKE, ARKANSAS



Lonoke is the second most populous city—with over 4,200 residents—in Lonoke County and it serves as the county seat. Located less than 30 minutes from Little Rock, Lonoke offers a unique mix of rural life, convenience, and affordability.

The city's close proximity to the state capital provides easy access to world-class healthcare, state government resources, and numerous institutions of higher education. Lonoke is positioned on the vital Interstate 40 east-west corridor, paralleled by U.S. Highway 70, which intersects Arkansas State Highway 31 at Front and Center Streets in Downtown Lonoke.

While once the site of the U.S. Army aviator training facility Eberts Field during World War I, Lonoke is now the home of the Remington Arms ammunition manufacturing facility. The world's largest freshwater fish hatchery is situated in Lonoke, and it is operated by the Arkansas Game and Fish Commission. Education, healthcare and retail are also considered top industries in the city.


Additional attractions include the historic Lonoke County Courthouse, which is listed on the National Register of Historic Places, and the restored Lonoke Depot, which houses the Chamber of Commerce.

### DEMOGRAPHICS\*

	3 MILES	5 MILES	10 MILES
<b>Population</b>	4,698	5,653	19,562
<b>Households</b>	1,754	2,123	7,403
<b>Average Age</b>	40.0	40.2	41.1
<b>Average Household Income</b>	\$55,064	\$56,434	\$61,850
<b>Businesses</b>	194	217	386

*\*Demographic details based on property location*

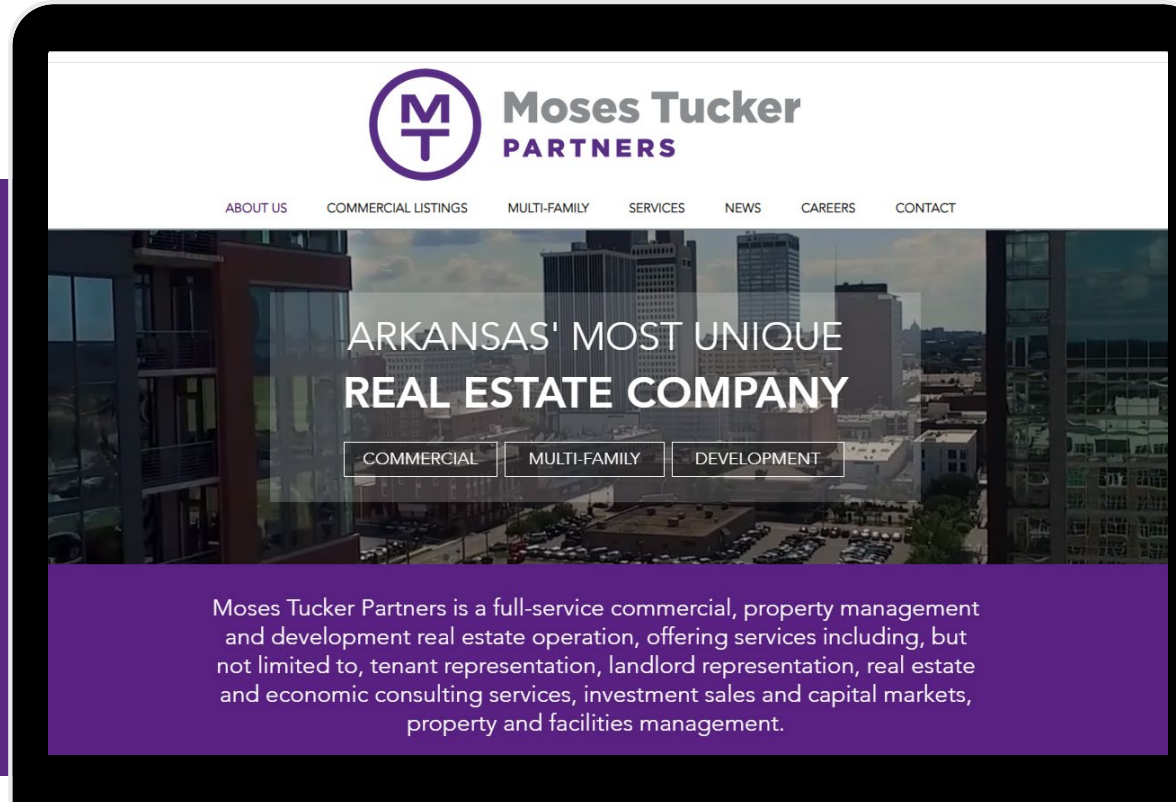
# CONNECT

 (501) 376-6555

 [www.mosestucker.com](http://www.mosestucker.com)

 [info@mosestucker.com](mailto:info@mosestucker.com)

 **200 River Market Ave, Suite 300,  
Little Rock, AR 72201**



**Greyson Skokos**  
*Principal & Vice President of Brokerage*  
[gskokos@mosestucker.com](mailto:gskokos@mosestucker.com)

**Josh Singleterry**  
*Brokerage Director*  
[jsingleterry@mosestucker.com](mailto:jsingleterry@mosestucker.com)

**Chris Monroe**  
*Principal & Vice President, Corporate Services*  
[cmonroe@mosestucker.com](mailto:cmonroe@mosestucker.com)

**Ridge Fletcher**  
*Brokerage Analyst*  
[rfletcher@mosestucker.com](mailto:rfletcher@mosestucker.com)

## DISCLAIMER

Moses Tucker Partners represents the owner of the property represented herein. Although all information furnished regarding property for sale, rental, or financing is from sources deemed reliable, such information has not been verified and no express representation is made nor is any to be implied as to the accuracy thereof and it is submitted subject to errors, omissions, change of price, rental or other conditions, prior sale, lease or financing, or withdrawal without notice and to any special conditions imposed by our principal.