

# AVAILABLE FOR LEASE

MEDICAL AND GENERAL OFFICE SPACE

950 SF - 3,000 SF | \$2.60 SF/Month

LEASED

1245 W Huntington Drive  
Arcadia, CA 91007

## For More Information

**Robert G. Stover** | Executive Vice President

Office: 626 204 1528  
rstover@naicapital.com  
CalDRE Lic #00688318

**NAI**Capital  
COMMERCIAL REAL ESTATE SERVICES, WORLDWIDE

# 1245 W Huntington Drive

Arcadia, California, 91007

## PROPERTY HIGHLIGHTS

- Suite 109: **LEASED**
- Patient Reception, Exam Rooms, and Private Offices
- Ground Floor Access
- Parking: 4 Reserved Spaces
- Surface Parking: Free

- Suite 102: 950 ± RSF
- Reception Area
- Two Private Office
- One File/Storage room
- One Restroom
- Parking: 2 Reserved Spaces
- Surface Parking: Free

## OFFERING SUMMARY

Lease Rate:	\$2.60 SF/month (MG)
Building Size:	18,118 SF
Available SF:	3,000 ± SF
Lot Size:	35,105 SF

DEMOGRAPHICS	1 Mi	3 Mi	5 Mi
Total Households	10,016	58,989	166,658
Total Population	27,800	168,880	494,113
Average HH Income	\$82,322	\$99,354	\$89,615

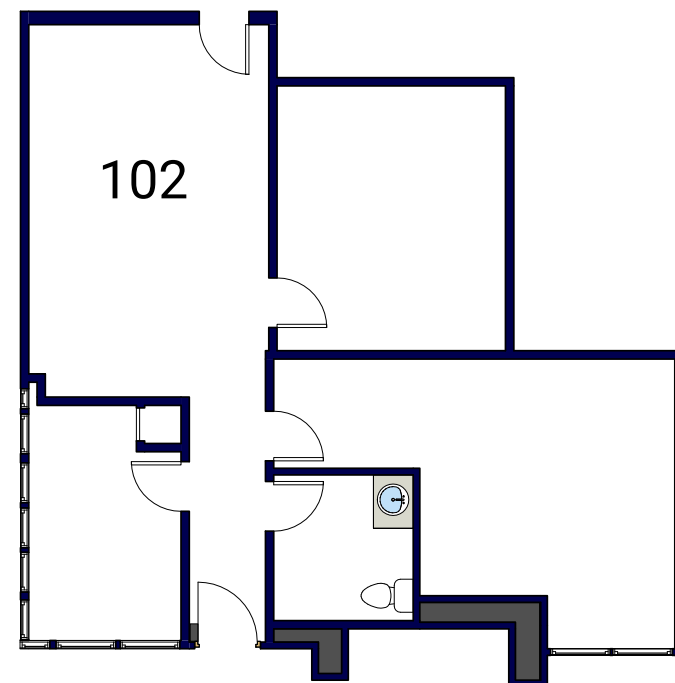
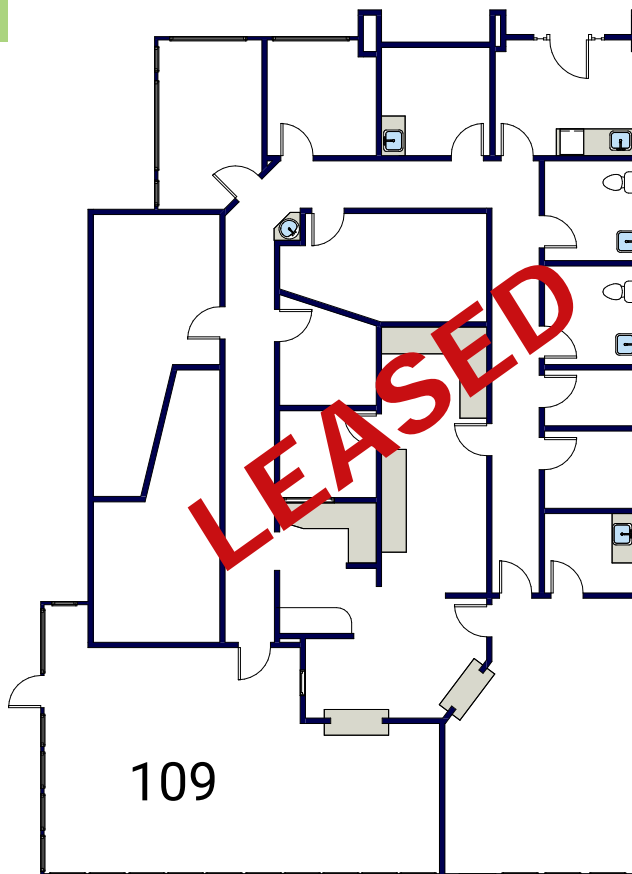
### For More Information

**Robert G. Stover** | Executive Vice President

Office: 626 204 1528

[rstover@naicapital.com](mailto:rstover@naicapital.com)

CalDRE Lic #00688318



FLOOR PLAN CREATED BY REST, INFORMATION DEEMED RELIABLE, BUT NOT GUARANTEED.  
(626) 840-1717

NO WARRANTY, EXPRESS OR IMPLIED, IS MADE AS TO THE ACCURACY OF THE INFORMATION CONTAINED HEREIN. THIS INFORMATION IS SUBMITTED SUBJECT TO ERRORS, OMISSIONS, CHANGE OF PRICE, RENTAL OR OTHER CONDITIONS, WITHDRAWAL WITHOUT NOTICE, AND IS SUBJECT TO ANY SPECIAL LISTING CONDITIONS IMPOSED BY OUR PRINCIPALS. COOPERATING BROKERS, BUYERS, TENANTS AND OTHER PARTIES WHO RECEIVE THIS DOCUMENT SHOULD NOT RELY ON IT, BUT SHOULD USE IT AS A STARTING POINT OF ANALYSIS, AND SHOULD INDEPENDENTLY CONFIRM THE ACCURACY OF THE INFORMATION CONTAINED HEREIN THROUGH A DUE DILIGENCE REVIEW OF THE BOOKS, RECORDS, FILES AND DOCUMENTS THAT CONSTITUTE RELIABLE SOURCES OF THE INFORMATION DESCRIBED HEREIN. LOGOS ARE FOR IDENTIFICATION PURPOSES ONLY AND MAY BE TRADEMARKS OF THEIR RESPECTIVE COMPANIES. NAI CAPITAL, INC. CAL DRE LIC. #02130474

**NAI Capital**  
COMMERCIAL REAL ESTATE SERVICES, WORLDWIDE