

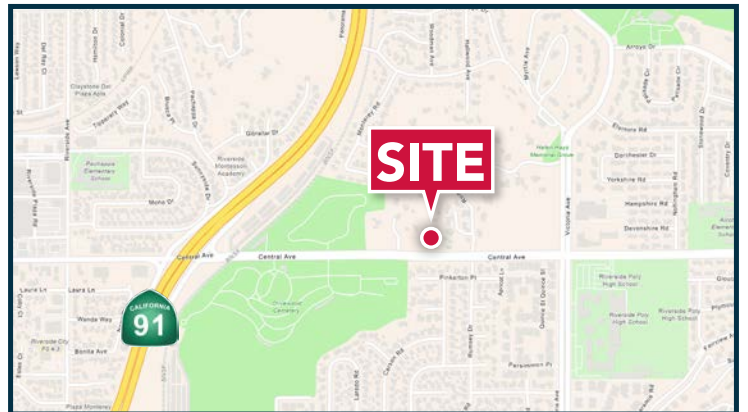
FOR SALE: ±14,500 SF RELIGIOUS/EDUCATIONAL FACILITY SITUATED ON ±3.05 ACRES OF LAND

2951 Central Avenue, Riverside, CA 92506



PROPERTY HIGHLIGHTS

- ±12,500 Square Foot Religious Building
- ±2,000 Square Foot Parsonage (House)
- Situated on ±3.05 Acres of Land
- Sanctuary Seating up to 298 Guests
- Upper Floor: Sanctuary, Restrooms, Two (2) Offices, & Prayer Room
- Lower Floor: Fellowship Hall, Kitchen, Lounge Area, Restrooms, Five (5) Classrooms, Pre-School Room, & Nursery Rooms
- Great Riverside Location with Easy Access to the 91 Freeway
- Assessor's Parcel Number: 223-070-009



RICH ERICKSON | OFFICE: 951.276.3637 | DRE#: 01219183 | RICH.ERICKSON@LEE-ASSOCIATES.COM

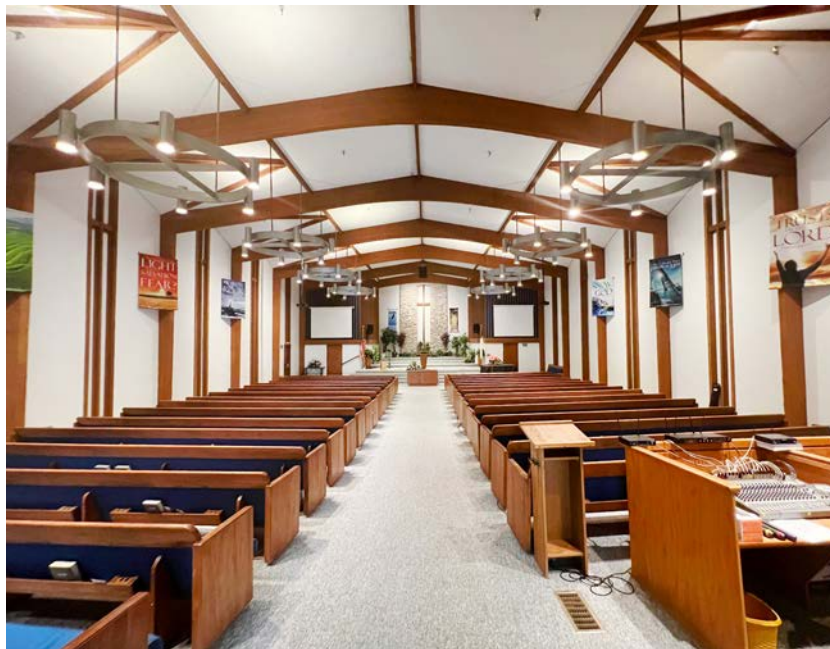
PAUL WHITEHOUSE, SIOR | OFFICE: 951.276.3607 | CELL: 951.233.5772 | DRE#: 01180028 | PWHITEHOUSE@LEE-ASSOCIATES.COM

No warranty or representation has been made to the accuracy of the foregoing information. Terms of sale or lease and availability are subject to change or withdrawal without notice. Lee & Associates Commercial Real Estate Services, Inc. - Riverside. 3240 Mission Inn Avenue, Riverside, CA 92507 | 951.276.3600 | Corporate DRE#: 01048055 | www.lee-associates.com

FOR SALE: ±14,500 SF RELIGIOUS/EDUCATIONAL FACILITY SITUATED ON ±3.05 ACRES OF LAND

2951 Central Avenue, Riverside, CA 92506

LEE & ASSOCIATES
COMMERCIAL REAL ESTATE SERVICES



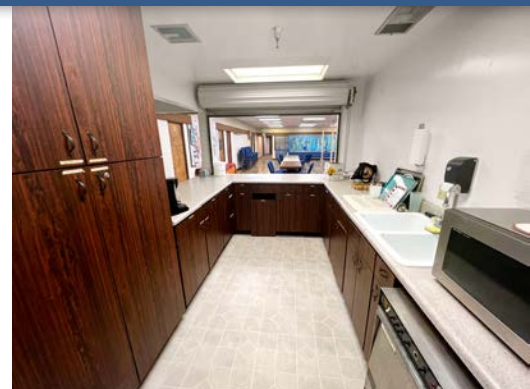
RICH ERICKSON | OFFICE: 951.276.3637 | DRE#: 01219183 | RICH.ERICKSON@LEE-ASSOCIATES.COM

PAUL WHITEHOUSE, SIOR | OFFICE: 951.276.3607 | CELL: 951.233.5772 | DRE#: 01180028 | PWHITEHOUSE@LEE-ASSOCIATES.COM

*No warranty or representation has been made to the accuracy of the foregoing information. Terms of sale or lease and availability are subject to change or withdrawal without notice.
Lee & Associates Commercial Real Estate Services, Inc. - Riverside. 3240 Mission Inn Avenue, Riverside, CA 92507 | 951.276.3600 | Corporate DRE#: 01048055 | www.lee-associates.com*

FOR SALE:
±14,500 SF RELIGIOUS/EDUCATIONAL FACILITY
SITUATED ON ±3.05 ACRES OF LAND
2951 Central Avenue, Riverside, CA 92506

LEE & ASSOCIATES
COMMERCIAL REAL ESTATE SERVICES



RICH ERICKSON | OFFICE: 951.276.3637 | DRE#: 01219183 | RICH.ERICKSON@LEE-ASSOCIATES.COM

PAUL WHITEHOUSE, SIOR | OFFICE: 951.276.3607 | CELL: 951.233.5772 | DRE#: 01180028 | PWHITEHOUSE@LEE-ASSOCIATES.COM

*No warranty or representation has been made to the accuracy of the foregoing information. Terms of sale or lease and availability are subject to change or withdrawal without notice.
Lee & Associates Commercial Real Estate Services, Inc. - Riverside. 3240 Mission Inn Avenue, Riverside, CA 92507 | 951.276.3600 | Corporate DRE#: 01048055 | www.lee-associates.com*

FOR SALE:

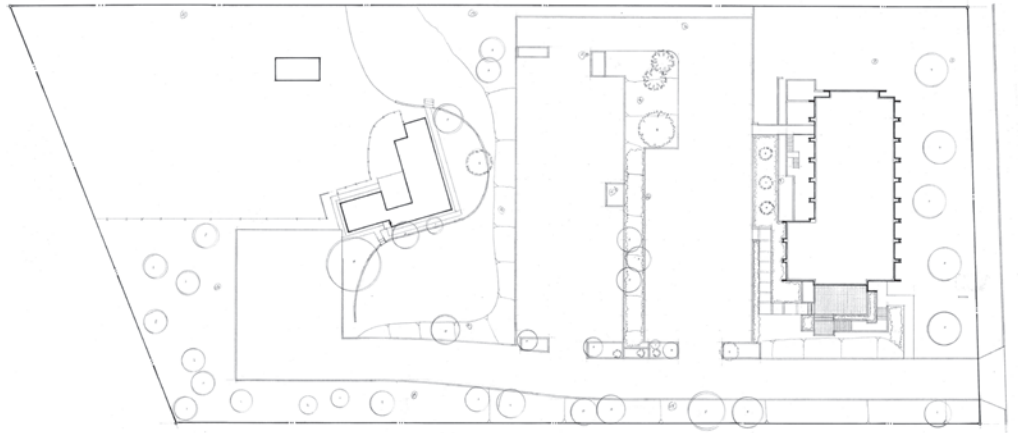
±14,500 SF RELIGIOUS/EDUCATIONAL FACILITY

SITUATED ON ±3.05 ACRES OF LAND

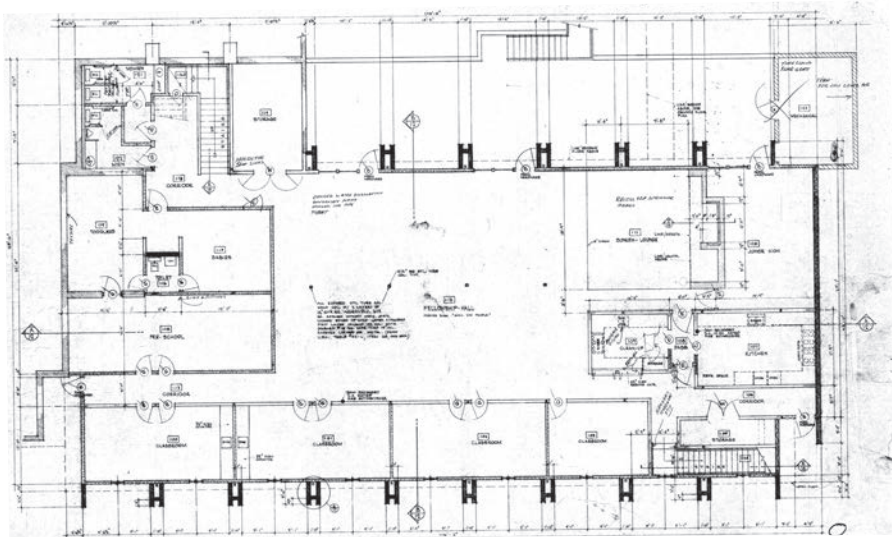
2951 Central Avenue, Riverside, CA 92506



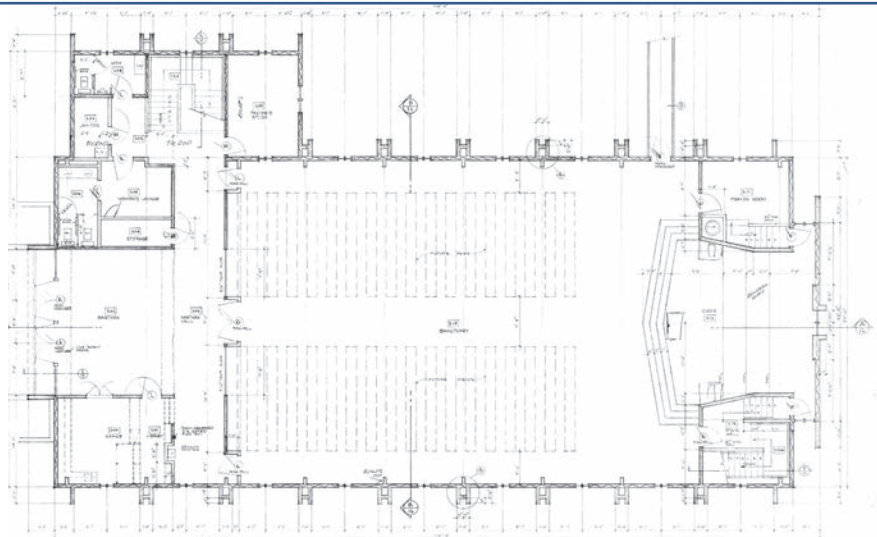
SITE PLAN



FIRST FLOOR PLAN



SECOND FLOOR PLAN



RICH ERICKSON | OFFICE: 951.276.3637 | DRE#: 01219183 | RICH.ERICKSON@LEE-ASSOCIATES.COM

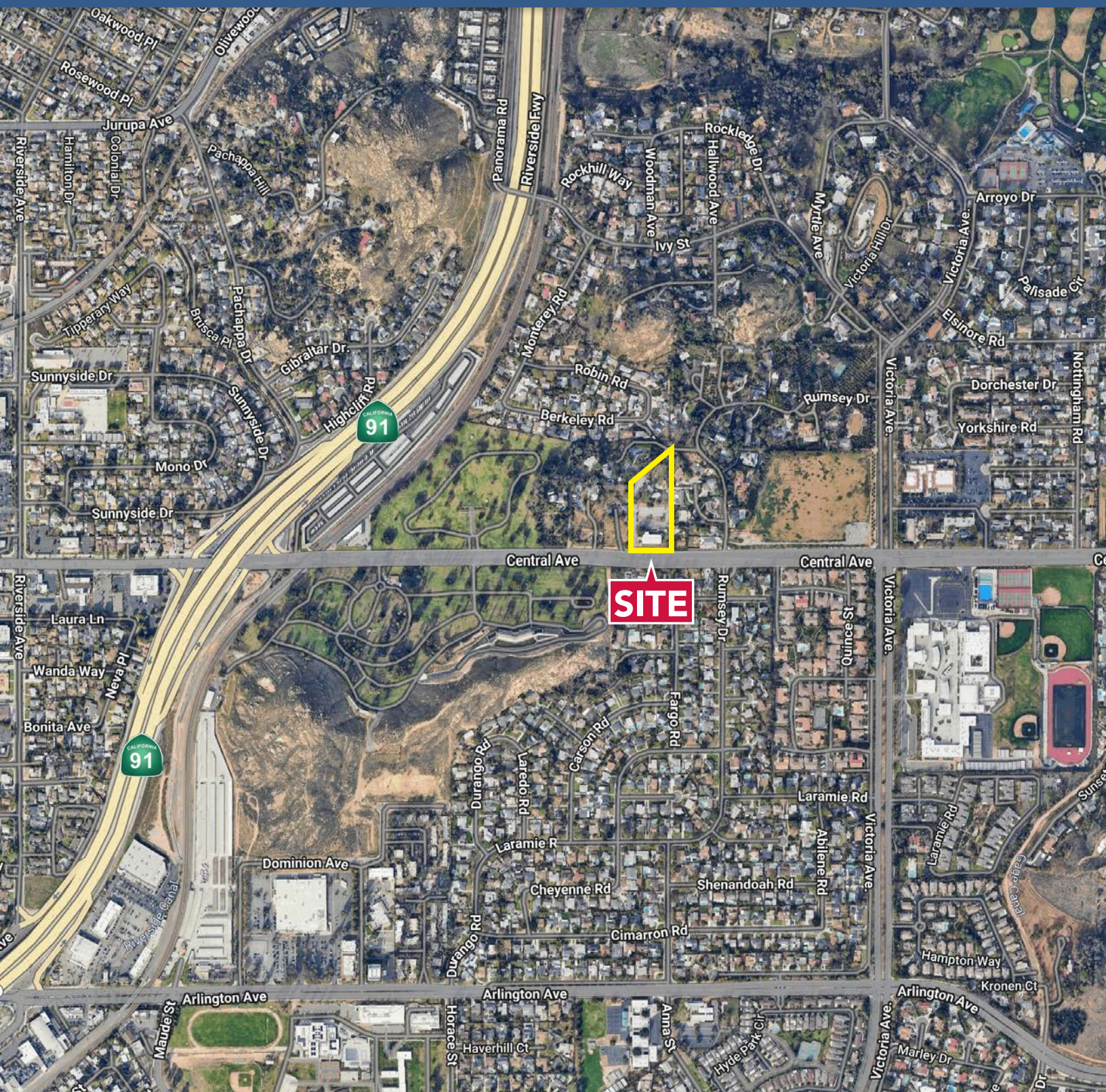
PAUL WHITEHOUSE, SIOR | OFFICE: 951.276.3607 | CELL: 951.233.5772 | DRE#: 01180028 | PWHITEHOUSE@LEE-ASSOCIATES.COM

No warranty or representation has been made to the accuracy of the foregoing information. Terms of sale or lease and availability are subject to change or withdrawal without notice.
Lee & Associates Commercial Real Estate Services, Inc. - Riverside. 3240 Mission Inn Avenue, Riverside, CA 92507 | 951.276.3600 | Corporate DRE#: 01048055 | www.lee-associates.com

FOR SALE: ±14,500 SF RELIGIOUS/EDUCATIONAL FACILITY SITUATED ON ±3.05 ACRES OF LAND

2951 Central Avenue, Riverside, CA 92506

LEE & ASSOCIATES
COMMERCIAL REAL ESTATE SERVICES



RICH ERICKSON | OFFICE: 951.276.3637 | DRE#: 01219183 | RICH.ERICKSON@LEE-ASSOCIATES.COM

PAUL WHITEHOUSE, SIOR | OFFICE: 951.276.3607 | CELL: 951.233.5772 | DRE#: 01180028 | PWHITEHOUSE@LEE-ASSOCIATES.COM

No warranty or representation has been made to the accuracy of the foregoing information. Terms of sale or lease and availability are subject to change or withdrawal without notice.
Lee & Associates Commercial Real Estate Services, Inc. - Riverside. 3240 Mission Inn Avenue, Riverside, CA 92507 | 951.276.3600 | Corporate DRE#: 01048055 | www.lee-associates.com