

# FOR SALE

2442A, 2442B & 2444  
Haywood Avenue  
West Vancouver, BC

## Strata Office Investment Opportunity

Ground floor office strata unit located in Dundarave Village one block north of Marine Drive all within walking distance to shopping, restaurants, Dundarave Seawall and Beach



**Mark Hagedorn**

Personal Real Estate Corporation

604.786.7778

[Mark.Hagedorn@macdonaldcommercial.com](mailto:Mark.Hagedorn@macdonaldcommercial.com)

**Macdonald**  
COMMERCIAL

**CORFAC**  
International

**2442A, 2442B  
& 2444  
Haywood Avenue  
West Vancouver, BC**

**PROPERTY INFORMATION**

**RENTABLE AREA**

1,276 sq.ft. (Approx.)

**LEGAL DESCRIPTION**

STRATA LOTS 8, 9 AND 10, PLAN  
VA81925, DISTRICT LOT 555, GROUP 1,  
NEW WESTMINSTER LAND DISTRICT

PIDs: 007-967-446  
007-967-454  
007-967-462

**ZONING**

C-4 which allows for a variety of  
retail, office and services uses

**PARKING**

3 covered reserved stalls

**TAXES**

\$7,745.60 (2024)

**STRATA FEES**

\$841.59 per month  
subject to periodic adjustments

**ASKING PRICE**

**\$1,399,900**

**THE PROPERTY**

Rare opportunity to acquire a ground floor commercial strata office space in Dundarave Village. The purchase includes 3 strata titled units joined together to create a newer renovated office space one block north of Marine Drive all within walking distance to shopping, restaurants Dundarave Seawall and Beach. Located in the "Manor House" development, this property is one of two commercial units located on the ground floor of a two-storey mixed commercial/residential development. Unit can be purchased with vacant possession or the owner can lease back at market rates.

**IMPROVEMENTS**

Currently operating as a Wellness Clinic this property offers newer improvements which include 3 private offices, reception/waiting area, kitchen with 2 private washrooms and an open studio.



**Great exposure**  
with high traffic volume  
on Marine Drive

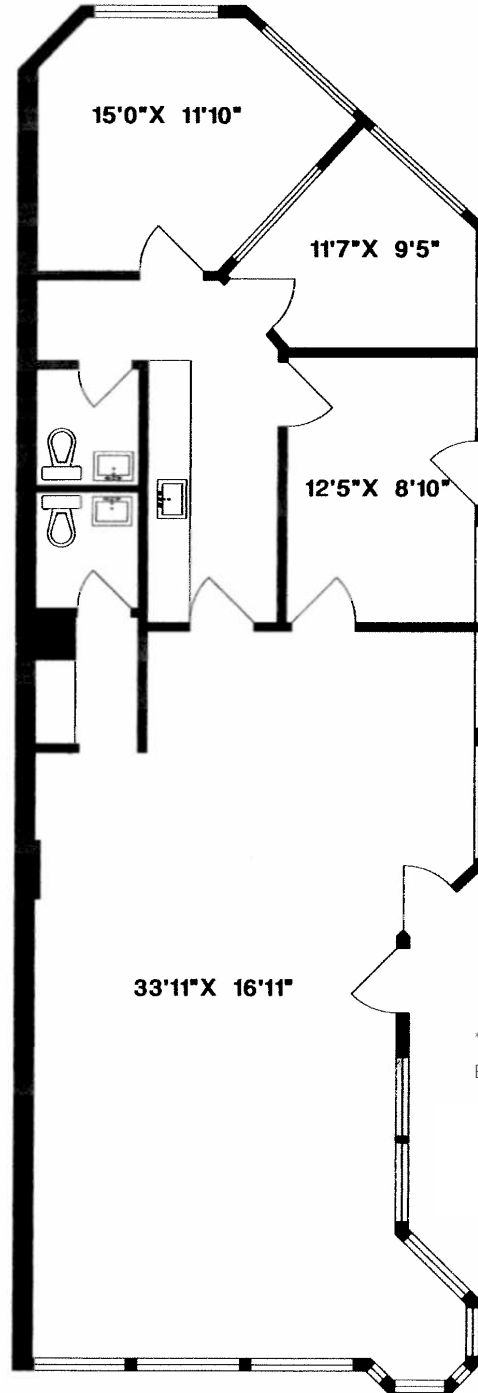


**Close proximity**  
to the Lion Gate Bridge



**Great location**  
for shops, restaurants

# Floor Plan



2442A, 2442B &  
2444 Haywood Ave  
1,276 SQ.FT.

\*AREA CALCULATED TO OUTSIDE  
EDGE OF ALL EXTERIOR WALLS

**Mark Hagedorn**

Personal Real Estate Corporation

604.786.7778

[Mark.Hagedorn@macdonaldcommercial.com](mailto:Mark.Hagedorn@macdonaldcommercial.com)





### Drive time to

Lion Gate Bridge 10 min

Park Royal Mall 8 min

### NEARBY .....

1. IGA
2. Shoppers Drug Mart
3. The Bakehouse
4. Delany's Coffee House
5. The Lion Bar & Grill
6. West Vancouver Optometry Clinic
7. Irwin Park Elementary School

## Mark Hagedorn

Personal Real Estate Corporation

604.786.7778

[Mark.Hagedorn@macdonaldcommercial.com](mailto:Mark.Hagedorn@macdonaldcommercial.com)

Although this information has been received from sources deemed reliable, we assume no responsibility for its accuracy, and without offering advice, make this submission subject to prior sale or lease, change in price or terms and withdrawal

**Macdonald**  
**COMMERCIAL**