

3351 Blue Ridge Ext.



Development Land

Presented by:

Bruce Re, VP Commercial Division

Jason Wakefield, Commercial Division

RE/MAX Commercial, REMAX State Line

11251 Nall Ave.

Overland Park, Kansas 66211

913-221-9689

It takes **relationships.**

RE/MAX
COMMERCIAL®

3351 Blue Ridge Ext., Grandview, Missouri

Development Land Available

Featured Space : 43.34 Acres

**Dramatic Price
Improvement:** **\$1,400,000**

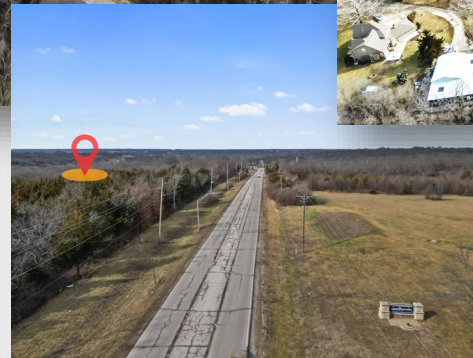
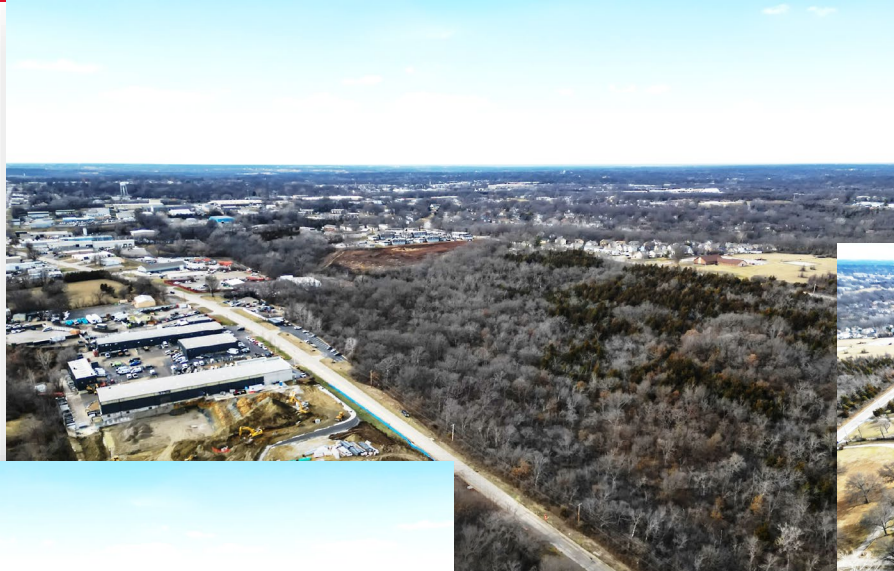
Zoning:: 4100-AG

Land Features: The available land sits between Blue Ridge Ext. and Main Street in Grandview. Located just 2-miles off I-49 and provides cross access from two major streets.

Prime Infill Location in a High-Demand Growth Area Close to Retail, Transportation, and Employment Centers Ideal for Multi-Family or Build-to-Rent Development



Photos





43.34 Acres of Development Ground:

Located just off I-49, could be ideal for Transportation /Logistics center, mixed Use or multi-family!!

RE/MAX Commercial, REMAX State Line

11251 Nall Ave.

Overland Park, Kansas 66211

913-221-9689

brucere@remax.net

It takes **relationships.**

RE/MAX
COMMERCIAL®