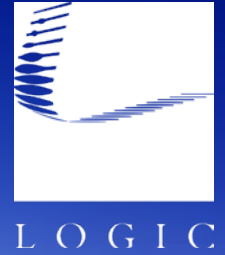


For Lease

# W. Liberty Street and Hill Street



*WILBUR D. MAY*  
*sculpture plaza*

201 W. Liberty Street  
Reno, NV 89501

**Michael Keating, SIOR**

Partner  
775.386.9727  
mkeating@logicCRE.com  
S.0174942

**Michael Dorn**

Vice President  
775.453.4436  
mdorn@logicCRE.com  
S.0189635

## Listing Snapshot



**\$2.30 PSF FS**  
Lease Rate



**± 2,163 SF**  
Available Square Footage



**Downtown**  
Submarket

## Property Highlights

- Downtown multi-level office building
- Full-service lease rate
- Convenient location in downtown Reno
- Close proximity to restaurants and coffee shops

- Ample natural light throughout interior

*\*All utilities are included in Lease Rate. Tenant responsible to pay directly for their own internet, phone, and security systems, if desired. To be further detailed in Lease.*

## Demographics

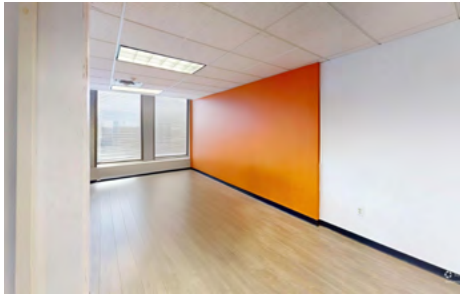
	1-mile	3-mile	5-mile
2025 Population	21,047	137,581	245,006
2025 Average Household Income	\$86,214	\$90,312	\$100,548
2025 Total Households	12,255	59,929	103,061







# Floor Plan | Suite 312



**\$2.30 FS**

Lease Rate



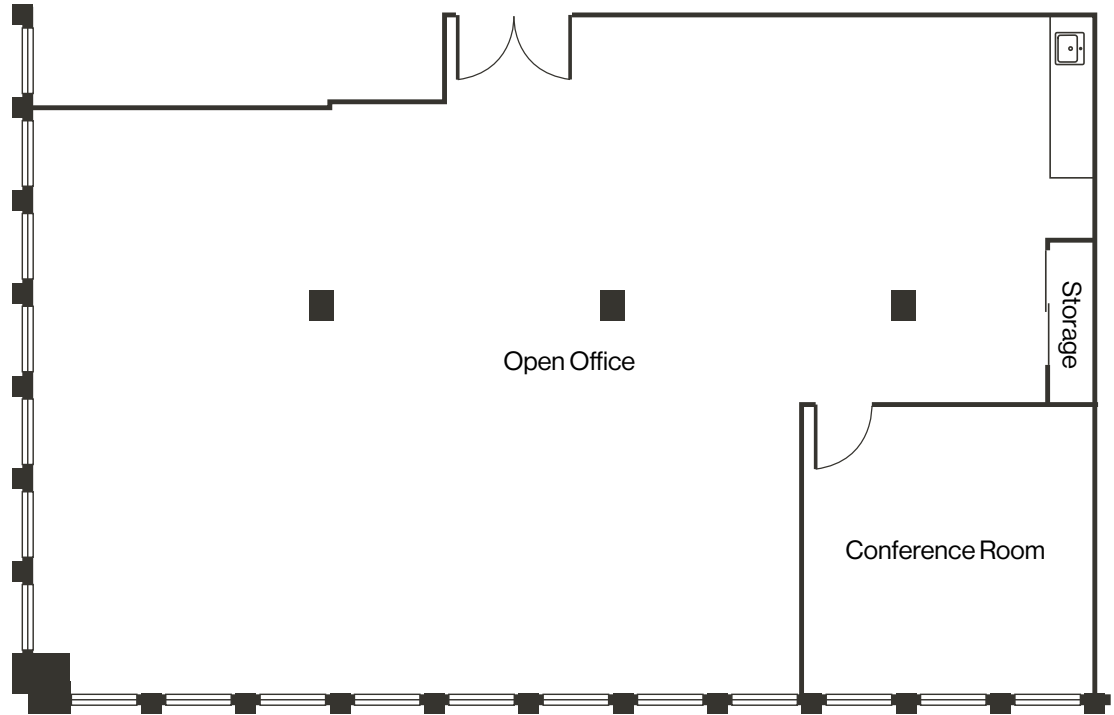
**± 2,163 SF**

Available Square Footage

## Suite Highlights

- Open concept
- Conference room
- Kitchenette
- Common area restrooms
- Available 4/1/26

[Click for a Virtual Tour](#)



Property Photos



# LOGIC Commercial Real Estate

## Specializing in Brokerage and Receivership Services



Join our email list and  
connect with us on LinkedIn

The information herein was obtained from sources deemed reliable; however LOGIC Commercial Real Estate makes no guarantees, warranties or representation as to the completeness or accuracy thereof.

For inquiries please reach out to our team.

**Michael Keating, SIOR**

Partner  
775.386.9727  
mkeating@logicCRE.com  
S.0174942

**Michael Dorn**

Vice President  
775.453.4436  
mdorn@logicCRE.com  
S.0189635