

# Stevenson Avenue Building

6000 Stevenson Avenue  
Alexandria, VA 22304

*Office Space Available*



## HIGHLIGHTS

- Just off I-395 at the Duke Street Exit
- Two suites available: 550 SF and 1606 SF
- Large suite is move-in ready
- Free surface parking
- All-inclusive pricing
- Recent renovations throughout
- On-site property management and maintenance
- Other tenants include: massage services, insurance, pharmacy, dentist, pediatricians, legal and tax services

## AVAILABLE SUITES

- Suite 104            865 SF            \$295/day  
  Shared Medical Program –  
  fully furnished and equipped medical office!
- Suite 300           1,300 SF           \$4,000/month

## PRICING AND TERMS

- Starting at \$37.00/sf, full service,  
  including daily limited cleaning
- 5 – 10 years



## CONTACT AND FURTHER INFORMATION

**Cecilia Gondor, Managing Member**

L&M Management LLC

101 S. Whiting Street, Suite 113

Alexandria, VA 22304

(w) (703) 751-5100

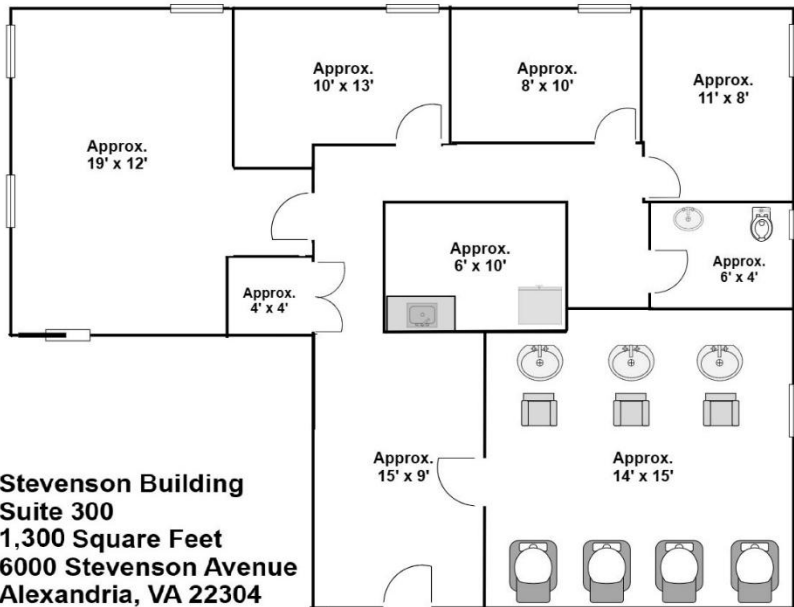
[cgondor@rentatlandmark.com](mailto:cgondor@rentatlandmark.com)

[www.LeaseAtLandmark.com](http://www.LeaseAtLandmark.com)

Ask us about other buildings we manage  
in the Alexandria, Virginia area including:

- 205 S. Whiting Street
- 101 S. Whiting Street
- 3541/3543 W. Braddock Road

*Pricing information is as of 9/2025 and is subject to change.*



**Stevenson Building  
Suite 300  
1,300 Square Feet  
6000 Stevenson Avenue  
Alexandria, VA 22304**

rentable square feet include a core factor of 5%



**SUITE 300**  
1,300 SF  
\$4,000/month



This large "Suite-Style" beauty salon. The space features:

- Reception Area
- 4 Individual rooms for "Suite-Style" services; 1 room is extra large
- Vinyl flooring throughout
- Kitchenette
- In-suite restroom
- Large Shampoo and Hair Dryer area (equipment not included but hook ups are in place)
- All-inclusive pricing
- Free parking
- Outdoor building signage available



*Pricing information is as of 9/2025 and is subject to change.*



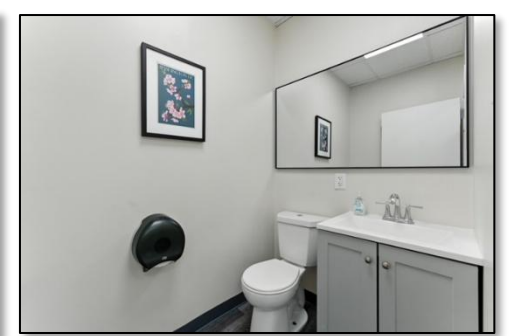
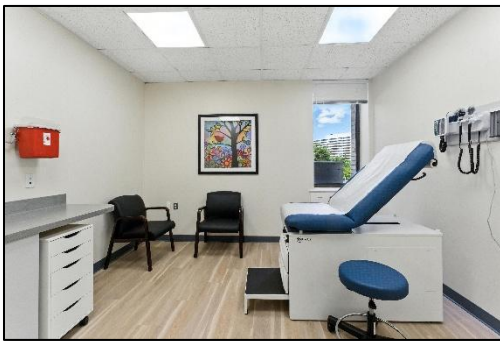
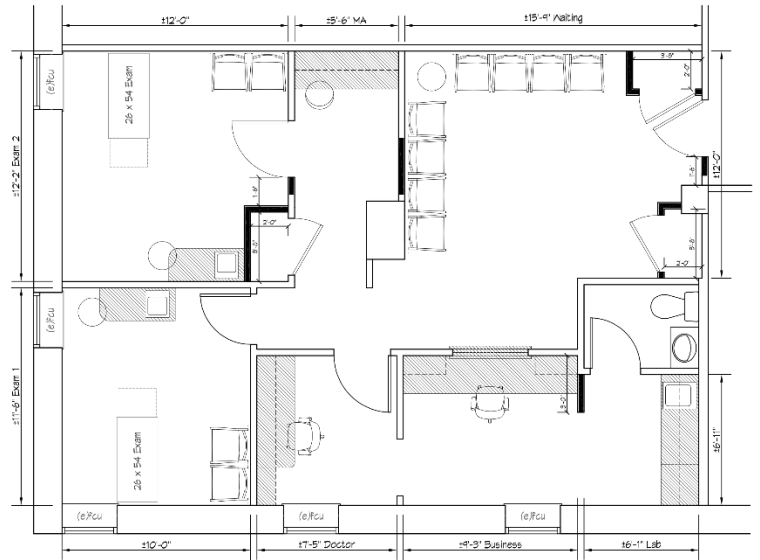
## SUITE 104

865 Square Feet

Shared Space at \$295/day, minimum 1 day/week for 1 year. Ask about details!

This 1st floor office has a restroom inside the Suite, waiting room area and a large reception/admin office.

There is clear access for clients/patients from the main entrance with no steps and no need to use the elevator.



*Pricing information is as of 9/2025 and is subject to change.*