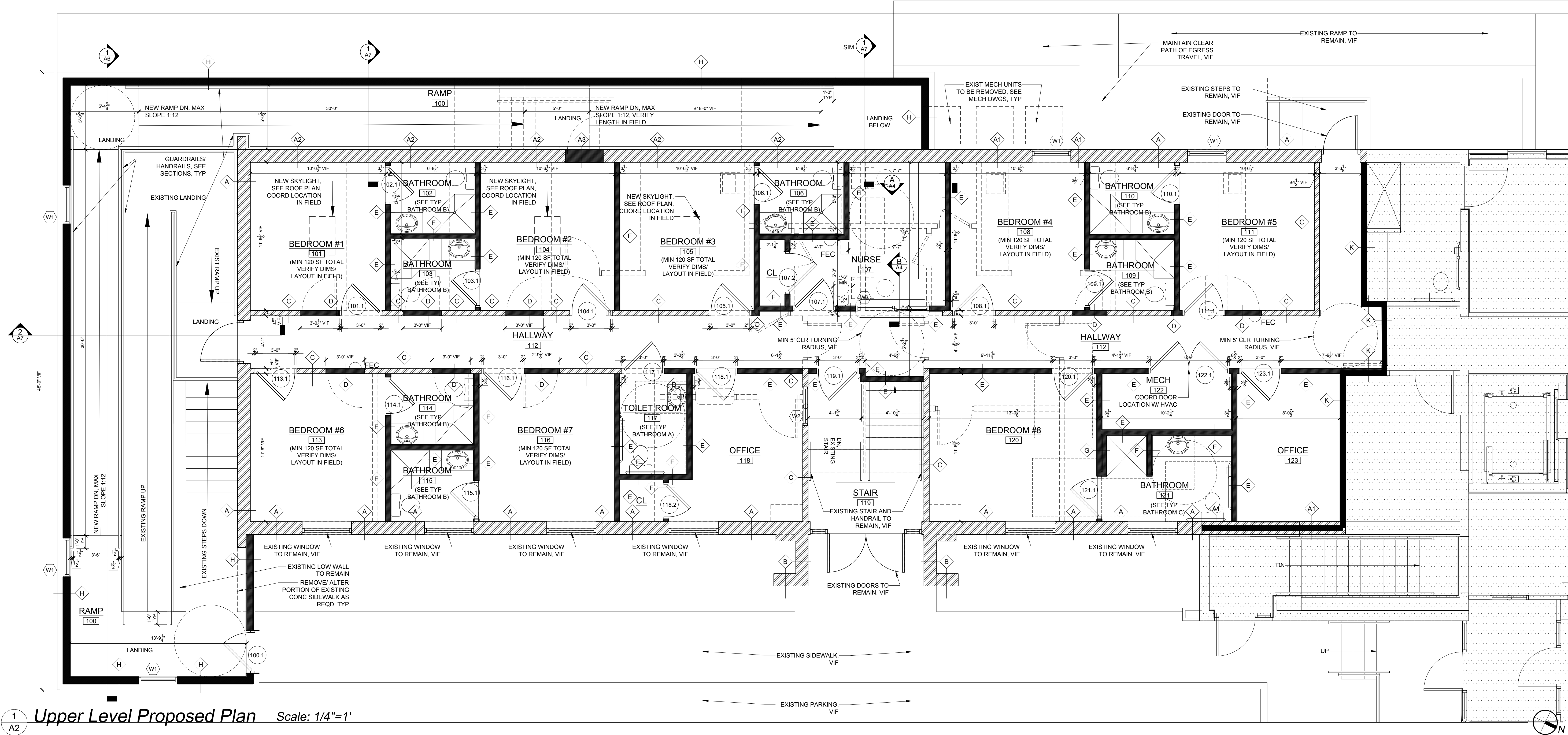
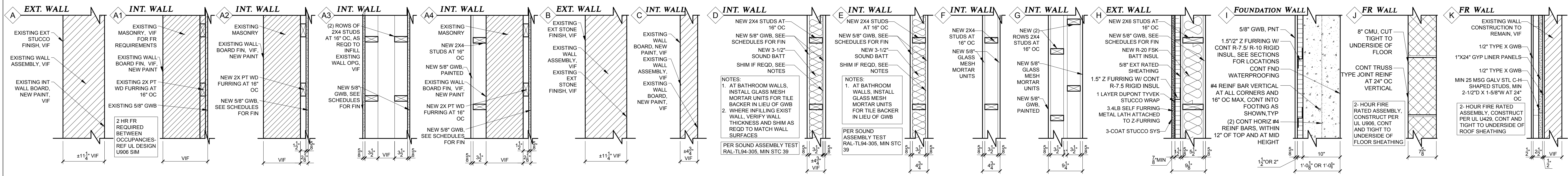


STRUCTURAL NOTES:		
STRUCTURAL INFORMATION PROVIDED BY LOCK RIDGE ENGINEERING, SCOTT GOLD, P.E., PA LIC #046480-E, CONTACT: 160 MAIN ST, EMMAUS PA 18049, SCOTT@LOCKRIDGEENGINEERING.COM, 610-704-6676.		
NOTE: VERIFY BEARING LOCATIONS/ CONDITIONS OF EXISTING ROOF FRAMING IN THE FIELD PRIOR TO DEMO. REPORT TO OWNER/ ENGINEER PRIOR TO COMMENCING WORK. IF INTERIOR BEARING WALLS ARE ENCOUNTERED, NEW HEADERS MUST BE SPECIFIED FOR NEW OPENINGS. GC IS RESPONSIBLE FOR SHORING AND BRACING STRUCTURE AS REQUIRED. NEW OPENINGS AND WALL FRAMING SHALL MATCH EXISTING		
STRUCTURAL LOADS:		
I. LIVE LOADS:		
A. ROOF LIVE/SNOW LOAD:		
1. BASIC GROUND SNOW LOAD, PG = 30 PSF		
2. FLAT ROOF SNOW LOAD, PF = 30 PSF		
3. SNOW EXPOSURE FACTOR, CE = 1.0		
4. SNOW LOAD IMPORTANCE FACTOR, I = 1.0		
5. DRIFTING AND SLIDING CALCULATED PER SPECIFIC CONDITIONS		
B. WIND LOAD:		
1. 3-SECOND GUST WIND SPEED = 115 MPH		
2. RISK CATEGORY II		
3. EXPOSURE CATEGORY = B		
4. DESIGN WIND LOAD, P = 20 PSF FOR MAIN WIND-FORCE RESISTING SYSTEM		
5. NET UPLIFT ON ROOF = 5 PSF		
C. SEISMIC LOAD:		
1. SEISMIC IMPORTANCE FACTOR, IE = 1.0		
2. SEISMIC USE GROUP		
3. SHORT PERIOD SPECTRAL ACCELERATION, SS = .215 G		
4. 1-SECOND PERIOD SPECTRAL ACCELERATION, S1 = .062 G		
5. SITE CLASS = D; SITE COEFFICIENT, FA = 1.56; SITE COEFFICIENT, FV = 2.4		
6. SEISMIC DESIGN CATEGORY = B		
7. BASIC SEISMIC-FORCE-RESISTING SYSTEM: LIGHT-FRAME BEARING WALLS		
8. RESPONSE MODIFICATION FACTOR, R = 2		
9. SYSTEM OVERSTRENGTH FACTOR, S = 2.5		
10. DEFLECTION AMPLIFICATION FACTOR, CD = 2		
11. ANALYSIS PROCEDURE = EQUIVALENT LATERAL FORCE		
II. DEAD LOADS:		
A. ROOF DEAD LOAD = 15 PSF		
FOUNDATION NOTES:		
1. SOIL SUPPORTING FOUNDATIONS SHALL HAVE A BEARING CAPACITY = 2,500 PSF (MINIMUM).		
2. FOUNDATIONS SHALL BE BUILT ON UNDISTURBED SOIL.		
3. QUALIFIED PERSONNEL SHALL REVIEW, TEST, AND APPROVE ALL BEARING SOILS AND MATERIAL PRIOR TO CONSTRUCTION ON IT.		
4. AFTER REMOVING TOP SOIL, SOFT SOIL, AND OTHER UNSUITABLE MATERIAL, THE REMAINING MATERIAL SHALL BE PROOF-ROLLED AND COMPACTED.		
5. ACCEPTABLE FILL MATERIAL CAN BE: SOIL, 2A MODIFIED STONE, FLOWABLE FILL, OR CONCRETE. ALL FILL MATERIAL SHALL BE APPROVED BY THE STRUCTURAL ENGINEER PRIOR TO ITS USE.		
6. SOIL OR STONE FILL SHALL BE PLACED IN 8" LOOSE LIFTS AND COMPACTED TO A DENSITY EQUAL TO OR GREATER THAN 95% OF THE MAXIMUM DRY DENSITY AS DETERMINED BY THE MODIFIED PROCTOR TEST, IN ACCORDANCE WITH ASTM STANDARDS.		
7. STONE BASE FOR SLAB SHALL BE 2A MODIFIED OR OTHER APPROVED STONE, COMPACTED UNTIL NO FURTHER CONSOLIDATION IS OBSERVED (AT LEAST THREE PASSES). AN APPROVED VAPOR BARRIER SHALL BE USED.		
8. GRADING DURING CONSTRUCTION SHALL BE MAINTAINED TO DIRECT WATER AWAY FROM THE BUILDING LOCATION. STEPS SHALL BE TAKEN TO PREVENT THE ACCUMULATION OF WATER.		
CONCRETE NOTES:		
1. CONCRETE CONSTRUCTION SHALL BE IN ACCORDANCE WITH THE LATEST ACI CODES.		
2. MATERIALS:		
A. FOUNDATIONS: F'C = 3000 PSI MINIMUM @ 28 DAYS; W/C RATIO = .50; SLUMP = 3"		
B. CONCRETE SLAB: F'C = 4000 PSI; W/C RATIO = 0.45, 3" SLUMP		
C. 6% AIR ENTRAINMENT FOR EXTERIOR CONCRETE		
D. REINFORCING STEEL: ASTM A615, GRADE 60 DEFORMED BARS.		
E. ADMIXTURES: CHLORIDE-FREE; SUBMIT FOR APPROVAL PRIOR TO USE		
3. HORIZONTAL REINFORCING IN FOOTINGS SHALL BE MADE CONTINUOUS AROUND CORNERS.		
4. THE MINIMUM EMBEDMENT LENGTH OF REINFORCING SHALL BE 8" OR 24 BAR DIAMETERS, WHICHEVER IS GREATER.		
5. REINFORCING BAR SPLICES SHALL BE 24", AS SHOWN, OR AS REQUIRED BY ACI, WHICHEVER IS GREATER.		
6. CRACK CONTROL JOINTS SHALL BE CUT OR INSTALLED IN SLABS ON GRADE AT 20' MAXIMUM INTERVALS IN TWO DIRECTIONS, UNLESS NOTED OTHERWISE ON THE DRAWINGS.		
UNDERPINNING NOTES:		
1. THE CONTRACTOR SHALL ADEQUATELY BRACE ALL ITEMS WHICH MAY BE AFFECTED BY THE UNDERPINNING WORK, PRIOR TO THE START OF THE WORK.		
2. UNDERPINNING SHALL BE PERFORMED IN ONE SECTION, NOT EXCEEDING 5' WIDE, AT A TIME.		
3. NEW FOUNDATIONS SHALL BE BUILT BELOW EXISTING ITEMS AS SHOWN ON THE DRAWINGS.		
4. DRY CONCRETE SHALL BE PACKED INTO SPACES REMAINING BETWEEN THE NEW AND EXISTING FOUNDATIONS.		
LUMBER NOTES:		
1. WOOD MATERIALS AND CONSTRUCTION SHALL BE IN ACCORDANCE WITH THE LATEST AFPA SPECIFICATIONS.		
2. WOOD USED SHALL HAVE THE FOLLOWING PROPERTIES:		
A. ALLOWABLE BENDING STRESS = 1100 PSI MINIMUM		
B. ALLOWABLE HORIZONTAL SHEAR STRESS = 150 PSI MINIMUM		
C. ALLOWABLE COMPRESSIVE STRESS (PARALLEL TO GRAIN) = 650 PSI MINIMUM		
D. ALLOWABLE COMPRESSIVE STRESS (PERPENDICULAR TO GRAIN) = 300 PSI MINIMUM		
E. MODULUS OF ELASTICITY, E = 1,200,000 PSI MINIMUM		
F. MOISTURE CONTENT = 15% MAXIMUM		
3. ENGINEERED TIMBER MATERIALS SHALL HAVE THE FOLLOWING PROPERTIES:		
A. ALLOWABLE BENDING STRESS = 2750 PSI MINIMUM		
B. ALLOWABLE HORIZONTAL SHEAR STRESS = 275 PSI MINIMUM		
C. ALLOWABLE COMPRESSIVE STRESS (PARALLEL TO GRAIN) = 2200 PSI MINIMUM		
D. ALLOWABLE COMPRESSIVE STRESS (PERPENDICULAR TO GRAIN) = 750 PSI MINIMUM		
E. MODULUS OF ELASTICITY, E = 1,900,000 PSI MINIMUM		
4. HEAVY CONSTRUCTION LOADS SHALL NOT BE APPLIED TO THE WOOD JOISTS.		
5. ALL CONNECTORS AND FASTENERS IN PRESSURE-TREATED WOOD SHALL BE COMPATIBLE WITH THE CHEMICALS AND WITH EACH OTHER. G185 GALVANIZED COATING, STAINLESS STEEL, OR PLASTIC COMPOSITE CONNECTORS AND FASTENERS ARE RECOMMENDED.		
6. ALL CONNECTORS AND FASTENERS SHALL BE INSTALLED IN ACCORDANCE THE MANUFACTURER'S SPECIFICATIONS.		



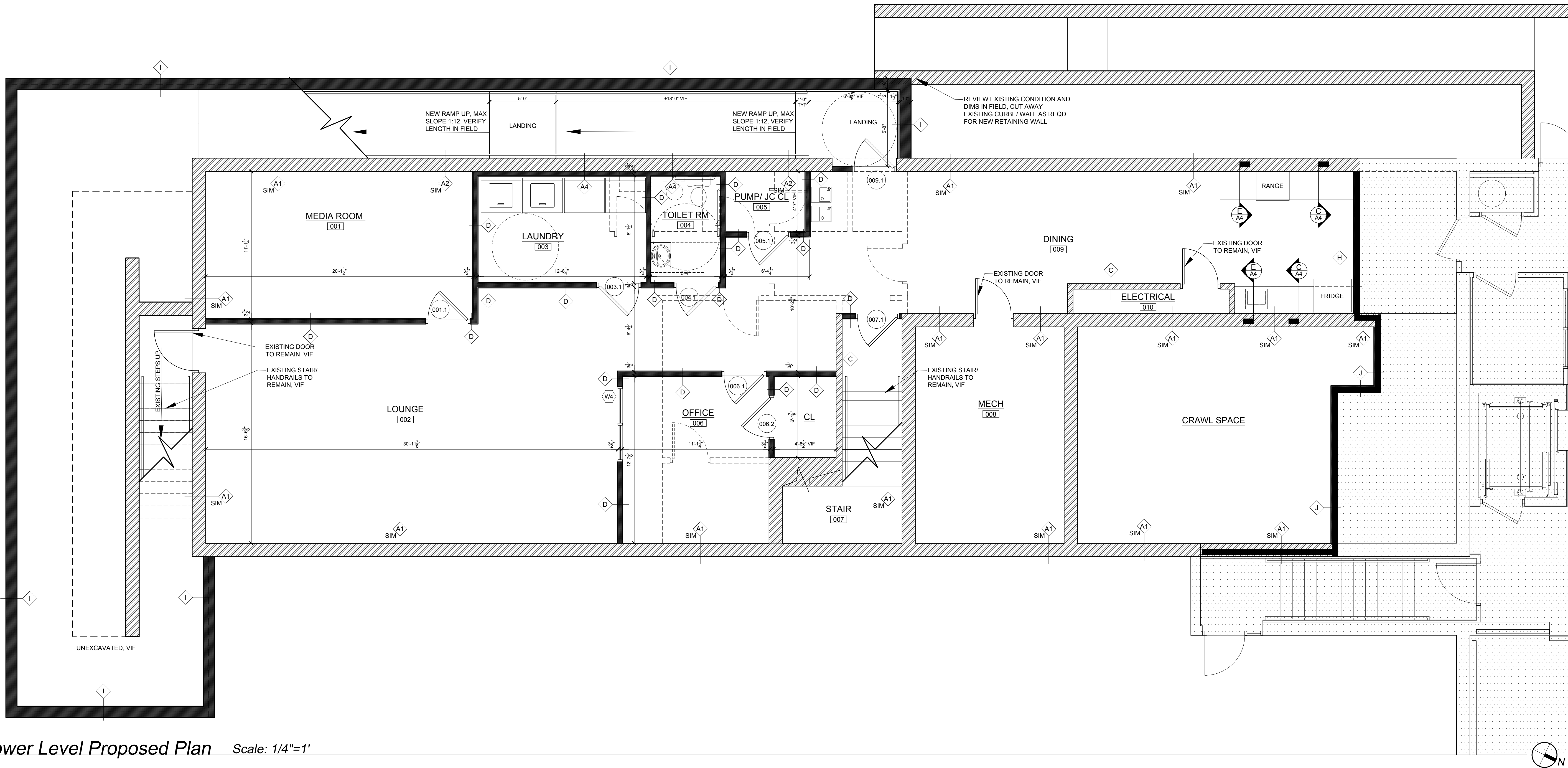
1 Upper Level Proposed Plan Scale: 1/4"=1'

Wall Types Scale: 1"=1'



ALL DRAWINGS AND WRITTEN MATERIALS APPEARING HEREIN CONSTITUTE ORIGINAL AND UNPUBLISHED WORK OF THE ARCHITECT. THE REPRODUCTION OF THIS DRAWING FOR THE PURPOSE OF COPYING THIS WORK, OR REVISING SAID DRAWING SHALL, IN NO CIRCUMSTANCE, BE APPROVED. THE REPRODUCTION OF THIS DRAWING FOR ANY OTHER PURPOSE IS PROHIBITED WITHOUT WRITTEN AUTHORIZATION OBTAINED FROM THE ARCHITECT. VIOLATION OF THIS RESTRICTION SHALL BE CONSIDERED A VIOLATION OF THE CODE OF ETHICS AND THEFT OF COMPANY ASSETS, BOTH OF WHICH SHALL BE PROSECUTED TO THE FULLEST EXTENT OF CURRENT STATUTES.

COPYRIGHT 2022

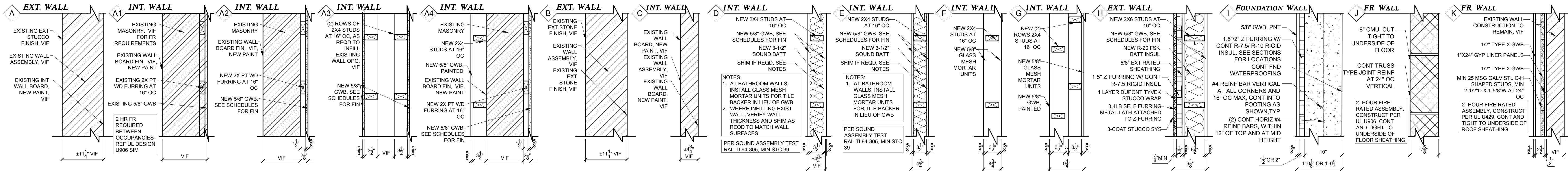


- FLOOR PLAN LEGEND**
- EXISTING WALL, FIXTURE, OR COMPONENT TO BE REMOVED. SEE DEMO PLAN ON A1
 - EXISTING WALL, FRAMING, OR COMPONENT TO REMAIN. VERIFY DETAILS AND CONDITIONS IN FIELD
 - NEW WALL CONSTRUCTION. SEE WALL TYPES ON A1

- TYPICAL PLAN NOTES:**
- VERIFY ALL DIMENSIONS IN THE FIELD, AND LAY OUT WALLS FOR REVIEW AND APPROVAL BY OWNER PRIOR TO CONSTRUCTING WALLS.
 - COORDINATE DOOR HARDWARE WITH ACCESSIBILITY REQUIREMENTS AND OWNER.
 - COORDINATE FINAL FINISH SELECTIONS WITH OWNER.
 - VERIFY ALL EXISTING CONSTRUCTION DETAILS AND FINISHES IN FIELD. COORDINATE NEW WORK AS REQUIRED FOR A CLEAN, FLUSH, AND FINISHED APPEARANCE.
 - WHERE EXISTING WALLS ARE TO BE REMOVED, REPAIR/ PATCH EXISTING THAT REMAIN TO MATCH AND ALIGN WITH ADJACENT WALLS.

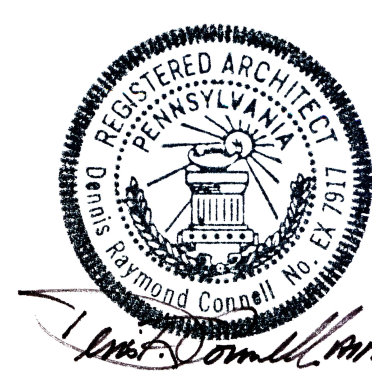
1 Lower Level Proposed Plan Scale: 1/4"=1'
A2

Wall Types Scale: 1"=1'



ALL DRAWINGS AND WRITTEN MATERIALS APPEARING HEREIN CONSTITUTE ORIGINAL AND UNPUBLISHED WORK OF THE ARCHITECT. THE REPRODUCTION OF THIS DRAWING FOR THE PURPOSE OF COPYING THIS WORK OR REVISING SAID DRAWING SHALL, IN NO CIRCUMSTANCE, BE APPROVED. THE REPRODUCTION OF THIS DRAWING FOR ANY OTHER PURPOSE IS PROHIBITED WITHOUT WRITTEN AUTHORIZATION OBTAINED FROM THE ARCHITECT. VIOLATION OF THIS RESTRICTION SHALL BE CONSIDERED A VIOLATION OF THE CODE OF ETHICS AND THEFT OF COMPANY ASSETS. BOTH OF WHICH SHALL BE PROSECUTED TO THE FULLEST EXTENT OF CURRENT STATUTES.

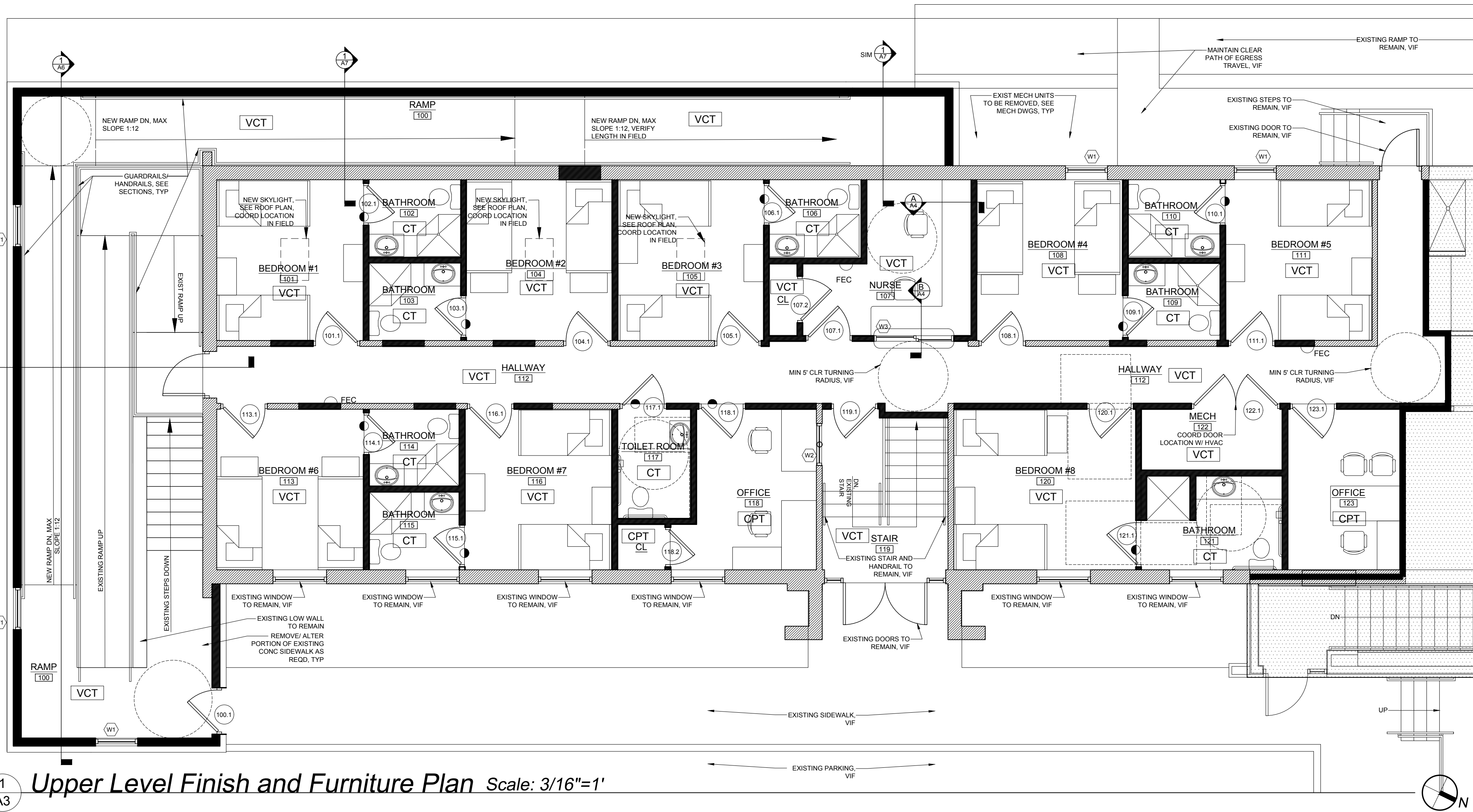
COPYRIGHT 2022



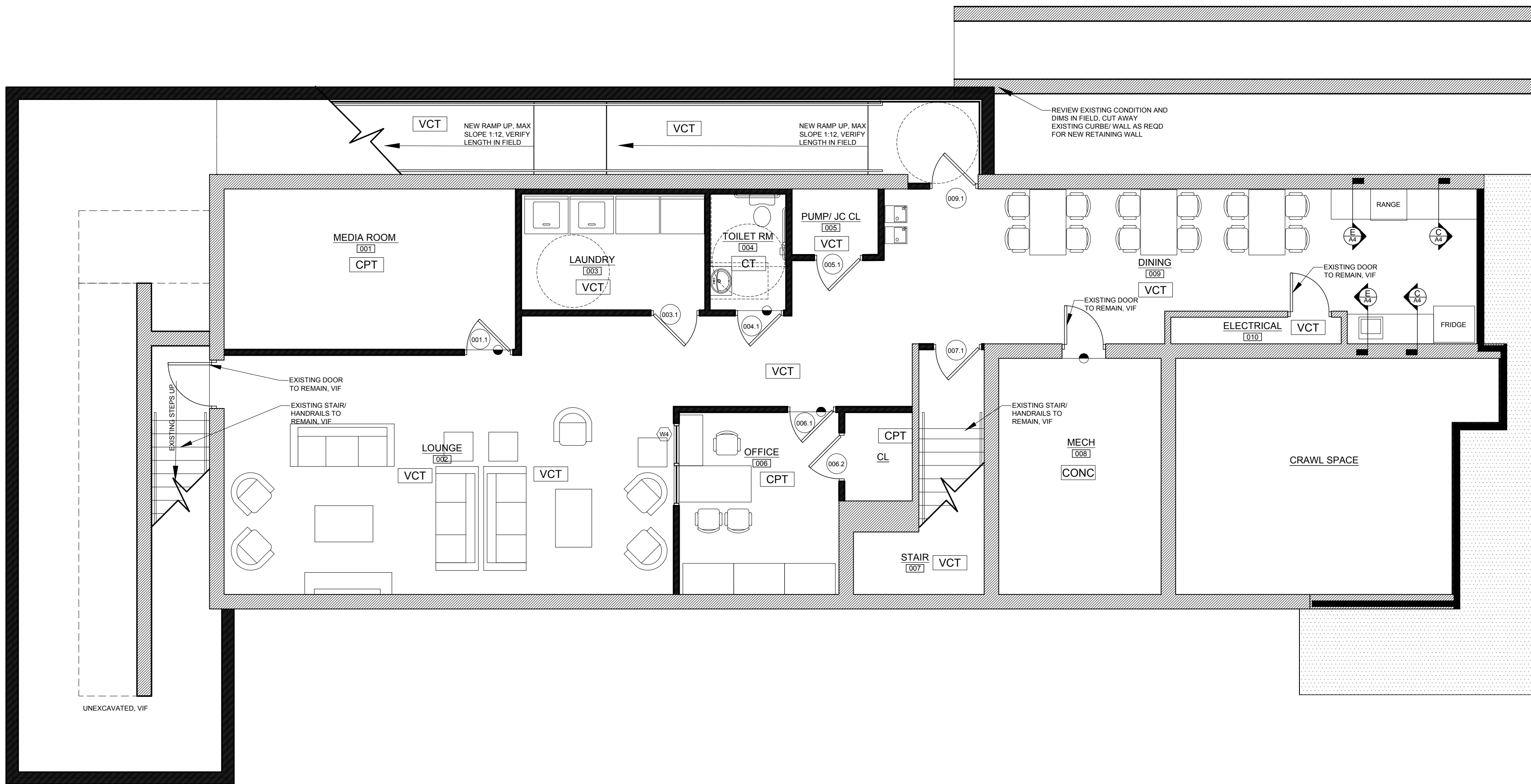
DAYBREAK TREATMENT SOLUTIONS 12/16/22
1288 VETERANS HIGHWAY
LEVITTOWN, PA #745.01
ALTERATIONS/ ADDITION TO
1288 VETERANS HIGHWAY
MIDDLETOWN TOWNSHIP, BUCKS COUNTY, PA
PROPOSED LOWER LEVEL FLOOR PLAN, WALL
TYPES

FORM SPACE DESIGN
707 NORTH NEW STREET BETHLEHEM, PA 18018 (610) 865-6166

A2.2



1 A3 Upper Level Finish and Furniture Plan Scale: 3/16"=1'



2 A3 Lower Level Finish and Furniture Plan Scale: 3/16"=1'

UPPER LEVEL ROOM FINISH SCHEDULE															
NO.	NAME	FLOOR		BASE		WALLS		CEILING		NEW		HT		REMARKS	
		EXIST	NEW	EXIST	NEW	EXIST	NEW	EXIST	NEW	EXIST	NEW	EXIST	NEW		
101	BEDROOM #1	CPT	VCT	VIN	4"	VIN	4"	GWB	PNT	GWB	PNT	GWB/PNT	VIF	GWB	PNT 8'-0" VIF
102	BATHROOM	CPT	CT	VIN	4"	VIN	4"	GWB	PNT	GWB/GMU	PNT/CT	GWB/PNT	VIF	GWB	PNT 8'-0" VIF
103	BATHROOM	CPT	CT	VIN	4"	VIN	4"	GWB	PNT	GWB/GMU	PNT/CT	GWB/PNT	VIF	GWB	PNT 8'-0" VIF
104	BEDROOM #2	CPT	VCT	VIN	4"	VIN	4"	GWB	PNT	GWB	PNT	GWB/PNT	VIF	GWB	PNT 8'-0" VIF
105	BEDROOM #3	CPT	VCT	VIN	4"	VIN	4"	GWB	PNT	GWB	PNT	GWB/PNT	VIF	GWB	PNT 8'-0" VIF
106	BATHROOM	CPT	CT	VIN	4"	VIN	4"	GWB	PNT	GWB/GMU	PNT/CT	GWB/PNT	VIF	GWB	PNT 8'-0" VIF
107	NURSE STATION	CPT	VCT	VIN	4"	VIN	4"	GWB	PNT	GWB	PNT	GWB/PNT	VIF	GWB	PNT 8'-0" VIF
108	BEDROOM #4	CPT	VCT	VIN	4"	VIN	4"	GWB	PNT	GWB	PNT	GWB/PNT	VIF	GWB	PNT 8'-0" VIF
109	BATHROOM	CPT	CT	VIN	4"	VIN	4"	GWB	PNT	GWB/GMU	PNT/CT	GWB/PNT	VIF	GWB	PNT 8'-0" VIF
110	BATHROOM	CPT	CT	VIN	4"	VIN	4"	GWB	PNT	GWB/GMU	PNT/CT	GWB/PNT	VIF	GWB	PNT 8'-0" VIF
111	BEDROOM #5	CPT	VCT	VIN	4"	VIN	4"	GWB	PNT	GWB	PNT	GWB/PNT	VIF	GWB	PNT 8'-0" VIF
112	HALLWAY	CPT	WD	VIN	4"	VIN	4"	GWB	PNT	GWB	PNT	GWB/PNT	VIF	GWB	PNT 8'-0" VIF
113	BEDROOM #6	CPT	VCT	VIN	4"	VIN	4"	GWB	PNT	GWB	PNT	GWB/PNT	VIF	GWB	PNT 8'-0" VIF
114	BATHROOM	CPT	CT	VIN	4"	VIN	4"	GWB	PNT	GWB/GMU	PNT/CT	GWB/PNT	VIF	GWB	PNT 8'-0" VIF
115	BATHROOM	CPT	CT	VIN	4"	VIN	4"	GWB	PNT	GWB/GMU	PNT/CT	GWB/PNT	VIF	GWB	PNT 8'-0" VIF
116	BEDROOM #7	CPT	VCT	VIN	4"	VIN	4"	GWB	PNT	GWB	PNT	GWB/PNT	VIF	GWB	PNT 8'-0" VIF
117	TOILET ROOM	CPT	CT	VIN	4"	VIN	4"	GWB	PNT	GWB/GMU	PNT/CT	GWB/PNT	VIF	GWB	PNT 8'-0" VIF
118	OFFICE	CPT	CPT	VIN	4"	VIN	4"	GWB	PNT	GWB	PNT	GWB/PNT	VIF	GWB	PNT 8'-0" VIF
119	STAIR	CPT	VCT	VIN	4"	VIN	4"	GWB	PNT	GWB	PNT	GWB/PNT	VIF	GWB	PNT 8'-0" VIF
120	BEDROOM #8	CPT	VCT	VIN	4"	VIN	4"	GWB	PNT	GWB	PNT	GWB/PNT	VIF	GWB	PNT 8'-0" VIF
121	BATHROOM	WD	CT	VIN	4"	VIN	4"	GWB	PNT	GWB/GMU	PNT/CT	GWB/PNT	VIF	GWB	PNT 8'-0" VIF
122	MECHANICAL	WD	VCT	VIN	4"	VIN	4"	GWB	PNT	GWB/GMU	PNT/CT	GWB/PNT	VIF	GWB	PNT 8'-0" VIF
123	OFFICE	WD	CPT	VIN	4"	VIN	4"	GWB	PNT	GWB	PNT	GWB/PNT	VIF	GWB	PNT 8'-0" VIF

NOTES:
1)VERIFY ALL EXISTING FINISHES, DIMENSIONS, AND CONSTRUCTION DETAILS IN THE FIELD PRIOR TO PROVIDING PRICING
2)VERIFY AND COORDINATE ALL NEW FINISHES WITH OWNER PRIOR TO PROVIDING PRICING

LOWER LEVEL ROOM FINISH SCHEDULE															
NO.	NAME	FLOOR		BASE		WALLS		CEILING		NEW		HT		REMARKS	
		EXIST	NEW	EXIST	NEW	EXIST	NEW	EXIST	NEW	EXIST	NEW	EXIST	NEW		
001	MEDIA ROOM	CPT	CPT	VIN	4"	VIN	4"	GWB	PNT	GWB	PNT	ACT	--	VIF	ACT -- 7'-6" VIF
002	LOUNGE	CPT	VCT	VIN	4"	VIN	4"	GWB	PNT	GWB	PNT	ACT	--	VIF	ACT -- 7'-6" VIF
003	LAUNDRY	CPT	VCT	VIN	4"	VIN	4"	GWB	PNT	GWB	PNT	ACT	--	VIF	ACT -- 7'-6" VIF
004	TOILET ROOM	CPT	CT	VIN	4"	VIN	4"	GWB	PNT	GWB/GMU	PNT/CT	ACT	--	VIF	ACT -- 7'-6" VIF
005	PUMP CLOSET	CPT	VCT	VIN	4"	VIN	4"	GWB	PNT	GWB	PNT	ACT	--	VIF	ACT -- 7'-6" VIF
006	OFFICE	CPT	CPT	VIN	4"	VIN	4"	GWB	PNT	GWB	PNT	ACT	--	VIF	ACT -- 7'-6" VIF
007	STAIR	CPT	VCT	VIN	4"	VIN	4"	GWB	PNT	GWB	PNT	ACT	--	VIF	ACT -- 7'-6" VIF
008	MECHANICAL	CONC	--	--	--	--	--	--	--	--	--	--	--	--	7'-6" VIF
009	DINING	VCT	VCT	VIN	4"	VIN	4"	GWB	PNT	GWB	PNT	ACT	--	VIF	ACT -- 7'-6" VIF
010	ELECTRICAL	VCT	VCT	VIN	4"	VIN	4"	GWB	PNT	GWB	PNT	ACT	--	VIF	ACT -- 7'-6" VIF

NOTES:
1)VERIFY ALL EXISTING FINISHES, DIMENSIONS, AND CONSTRUCTION DETAILS IN THE FIELD PRIOR TO PROVIDING PRICING
2)VERIFY AND COORDINATE ALL NEW FINISHES WITH OWNER PRIOR TO PROVIDING PRICING
3)PRIOR TO PURCHASING OR INSTALLING FLOOR FINISHES, CONTRACTOR SHALL REVIEW MANUFACTURERS REQUIREMENTS AND RECOMMENDATIONS, AND PERFORM NECESSARY MOISTURE AND HUMIDITY TESTING TO VERIFY ACCEPTABLE CONDITIONS FOR INSTALLATION.

UPPER LEVEL DOOR AND FRAME SCHEDULE															
NO.	DOOR DATA				FIRE RATING	FRAME DATA				DETAILS				HARDWARE SET	REMARKS
	TYPE	MATL	FIN	SIZE		TYPE	MATL	FIN	HD	JB	SL	SL	SL		
100.1	A	HM	PNT	3'-0"	6'-8"	--	A	HM	PNT	H3	J3	S3	S3		INSUL DOOR / GL
101.1	B	WD	STN	3'-0"	6'-8"	--	A	HM	PNT	H1	J1	--	--		
102.1	B	WD	STN	3'-0"	6'-8"	--	A	HM	PNT	H1	J1	S2	S2		
103.1	B	WD	STN	3'-0"	6'-8"	--	A	HM	PNT	H1	J1	S2	S2		
104.1	B	WD	STN	3'-0"	6'-8"	--	A	HM	PNT	H1	J1	--	--		
105.1	B	WD	STN	3'-0"	6'-8"	--	A	HM	PNT	H1	J1	--	--		
106.1	B	WD	STN	3'-0"	6'-8"	--	A	HM	PNT	H1	J1	S2	S2		
107.1	A	WD	STN	3'-0"	6'-8"	--	A	HM	PNT	H1	J1	S1	S1		
107.2	B	WD	STN	3'-0"	6'-8"	--	A	HM	PNT	H1	J1	--	--		
108.1	B	WD	STN	3'-0"	6'-8"	--	A	HM	PNT	H1	J1	--	--		
109.1	B	WD	STN	3'-0"	6'-8"	--	A	HM	PNT	H1	J1	S2	S2		
110.1	B	WD	STN	3'-0"	6'-8"	--	A	HM	PNT	H1	J1	S2	S2		
111.1	B	WD	STN	3'-0"	6'-8"	--	A	HM	PNT	H1	J1	--	--		
113.1	B	WD	STN	3'-0"	6'-8"	--	A	HM	PNT	H1	J1	--	--		
114.1	B	WD	STN	3'-0"	6'-8"	--	A	HM	PNT	H1	J1	S2	S2		
115.1	B	WD	STN	3'-0"	6'-8"	--	A	HM	PNT	H1	J1	S2	S2		
116.1	B	WD	STN	3'-0"	6'-8"	--	A	HM	PNT	H1	J1	--	--		
117.1	B	WD	STN	3'-0"	6'-8"	--	A	HM	PNT	H1	J1	S2	S2		
118.1	B	WD	STN	3'-0"	6'-8"	--	A	HM	PNT	H1	J1	S1	S1		
118.2	B	WD	STN	2'-6"	6'-8"	--	A	HM	PNT	H1	J1	--	--		
119.1	A	WD	STN	3'-0"	6'-8"	--	A	HM	PNT	H1	J1	S1	S1		
120.1	B	WD	STN	3'-0"	6'-8"	--	A	HM	PNT	H1	J1	--	--		
121.1	B	WD	STN	3'-0"	6'-8"	--	A	HM	PNT	H1	J1	S2	S2		
122.1	C	WD	STN	(2)3'-0"	6'-8"	--	A	HM	PNT	H1	J1	--	--		
123.1	A	WD	STN	3'-0"	6'-8"	--	A	HM	PNT	H1	J1	S1	S1		

NOTES:
1)VERIFY AND COORDINATE ALL NEW DOOR HARDWARE WITH OWNER PRIOR TO COMMENCING WORK.
2)VERIFY AND COORDINATE ALL NEW DOOR FINISHES WITH OWNER PRIOR TO COMMENCING WORK.

LOWER LEVEL DOOR AND FRAME SCHEDULE															
NO.	DOOR DATA				FIRE RATING	FRAME DATA				DETAILS				HARDWARE SET	REMARKS
	TYPE	MATL	FIN	SIZE		TYPE	MATL	FIN	HD	JB	SL	SL	SL		
001.1	A	WD	STN	3'-0"	6'-8"	--	A	HM	PNT	H1	J1	--	--		
003.1	A	WD	STN	3'-0"	6'-8"	--	A	HM	PNT	H1	J1	--	--		
004.1	B	WD	STN	3'-0"	6'-8"	--	A	HM	PNT	H1	J1	S2	S2		
005.1	B	WD	STN	3'-0"	6'-8"	--	A	HM	PNT	H1	J1	S2	S2		
006.1	A	WD	STN	3'-0"	6'-8"	--	A	HM	PNT	H1	J1	--	--		
006.2	B	WD	STN	3'-0"	6'-8"	--	A	HM	PNT	H1	J1	--	--		
007.1	A	WD	STN	3'-0"	6'-8"	--	A	HM	PNT	H1	J1	S1	S1		
008.1	A	HM	PNT	3'-0"	6'-8"	--	A	HM	PNT	H1	J1	--	--		INSUL DOOR / GL

NOTES:
1)VERIFY AND COORDINATE ALL NEW DOOR HARDWARE WITH OWNER PRIOR TO COMMENCING WORK.
2)VERIFY AND COORDINATE ALL NEW DOOR FINISHES WITH OWNER PRIOR TO COMMENCING WORK.

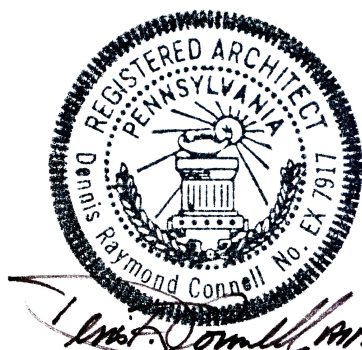
ALL DRAWINGS AND WRITTEN MATERIALS APPEARING HEREIN CONSTITUTE ORIGINAL AND UNPUBLISHED WORK OF THE ARCHITECT. THE REPRODUCTION OF THIS DRAWING FOR THE PURPOSE OF COPYING THIS WORK, OR REUSING SAID DRAWING SHALL, IN NO CIRCUMSTANCE, BE APPROVED. THE REPRODUCTION OF THIS DRAWING FOR ANY OTHER PURPOSE IS PROHIBITED WITHOUT WRITTEN AUTHORIZATION OBTAINED FROM THE ARCHITECT. VIOLATION OF THIS RESTRICTION SHALL BE CONSIDERED A VIOLATION OF THE CODE OF ETHICS AND THEFT OF COMPANY ASSETS. BOTH OF WHICH SHALL BE PROSECUTED TO THE FULLEST EXTENT OF CURRENT STATUTES.

COPYRIGHT 2022

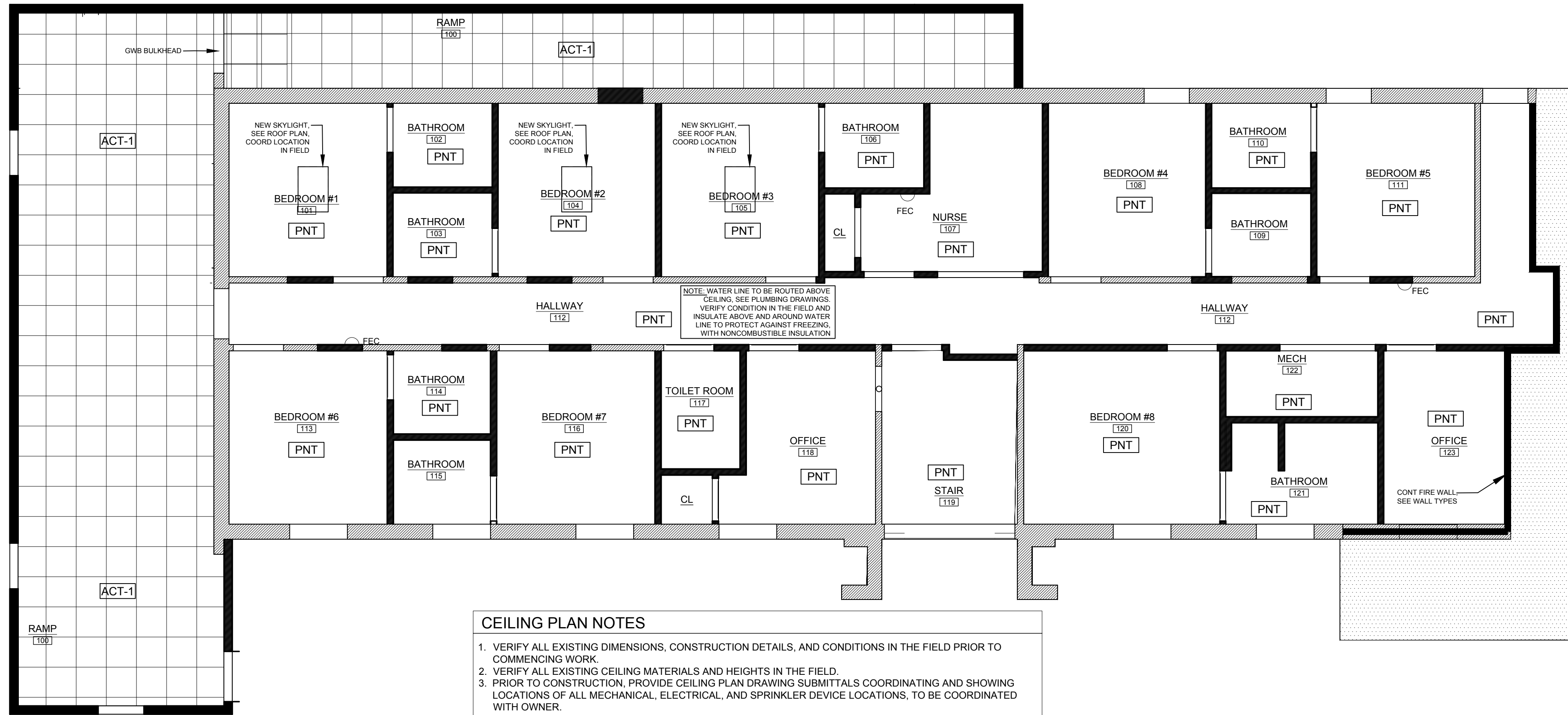
DAYBREAK TREATMENT SOLUTIONS
1288 VETERANS HIGHWAY
LEVITTOWN, PA
#745.01

ALTERATIONS/ ADDITION TO
1288 VETERANS HIGHWAY
MIDDLETOWN TOWNSHIP, BUCKS COUNTY, PA
FURNITURE AND FLOOR FINISH PLANS, FINISH
SCHEDULES, DOOR SCHEDULES

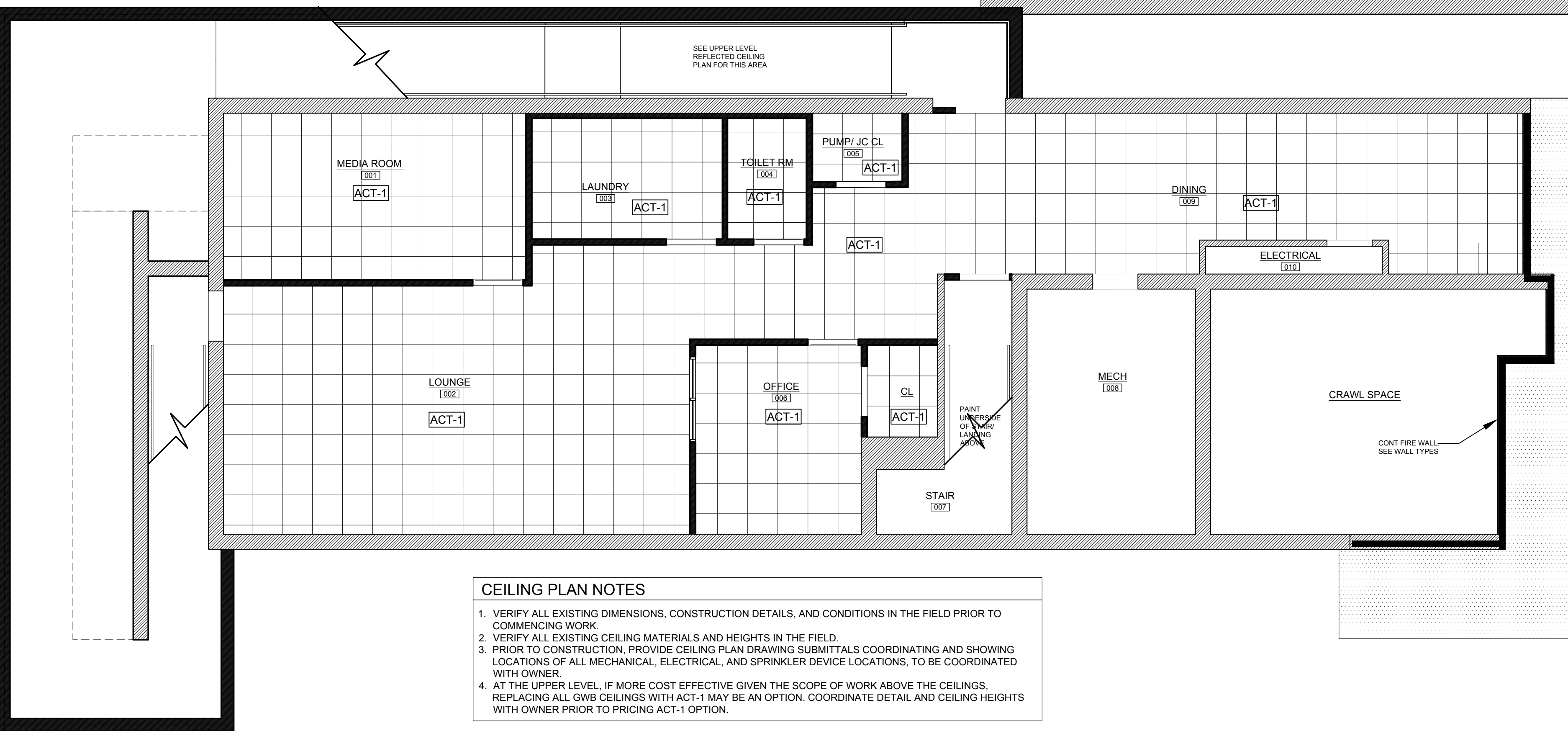
FORM SPACE DESIGN
707 NORTH NEW STREET BETHLEHEM, PA 18018 (610) 865-6166



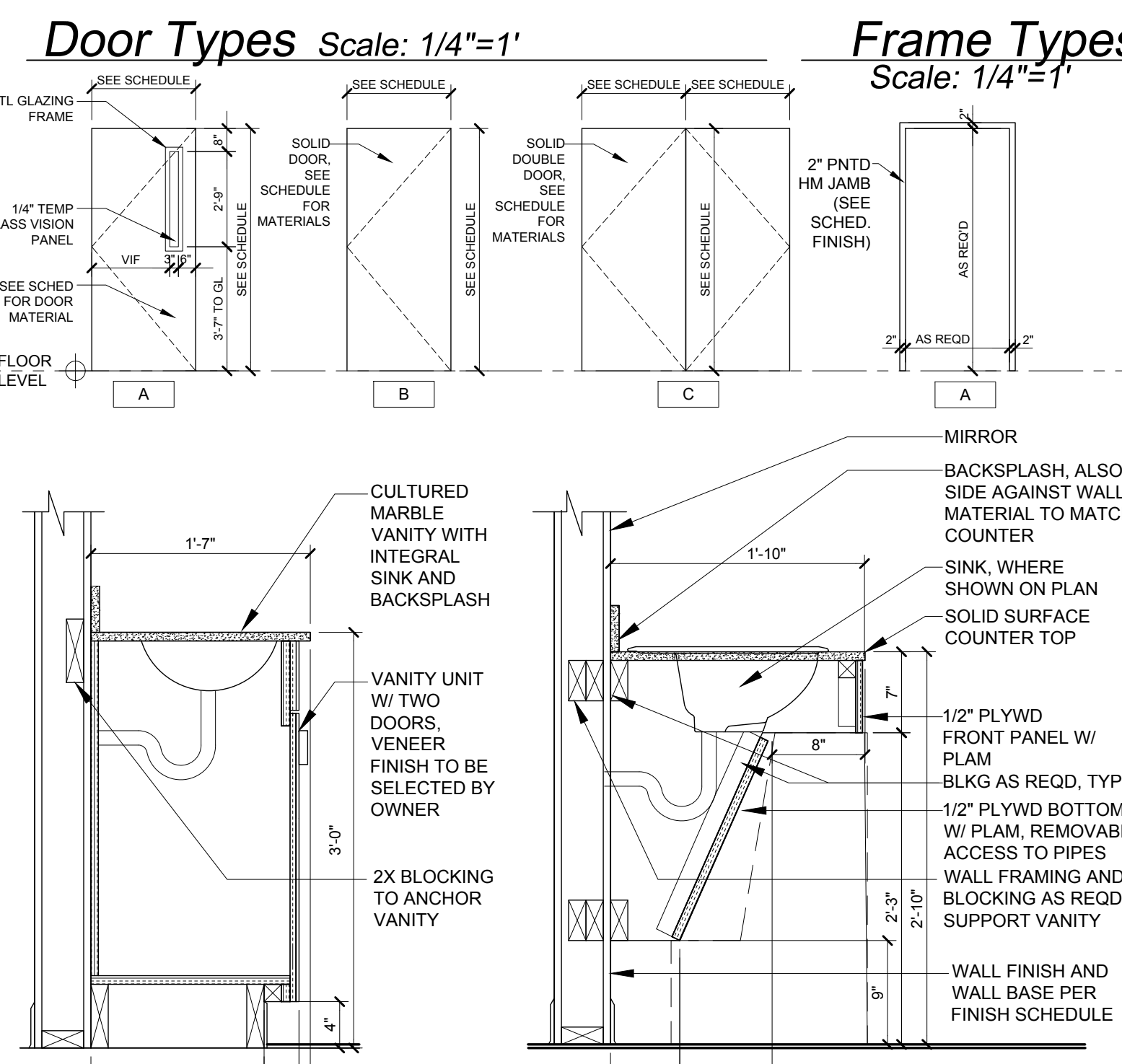
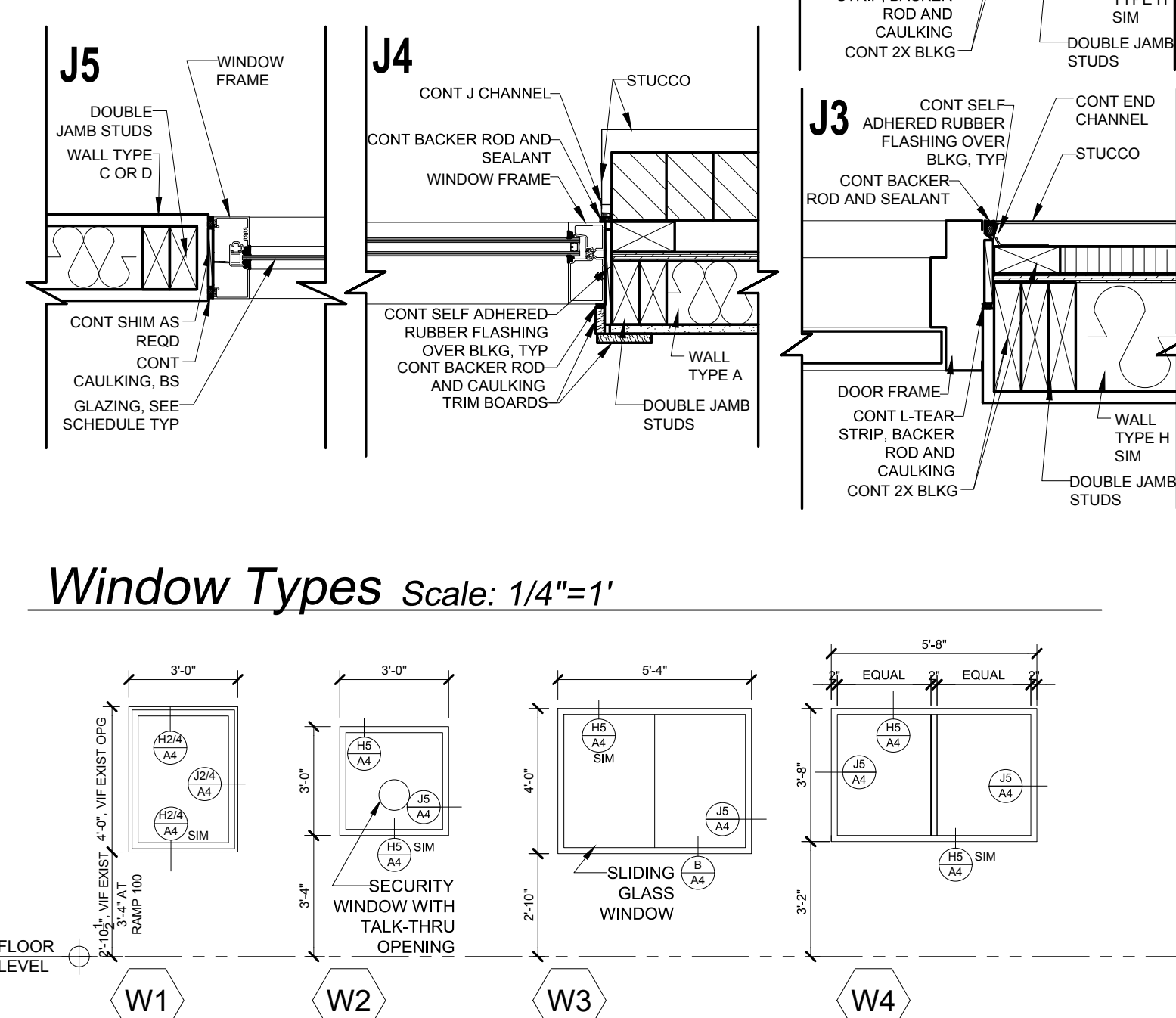
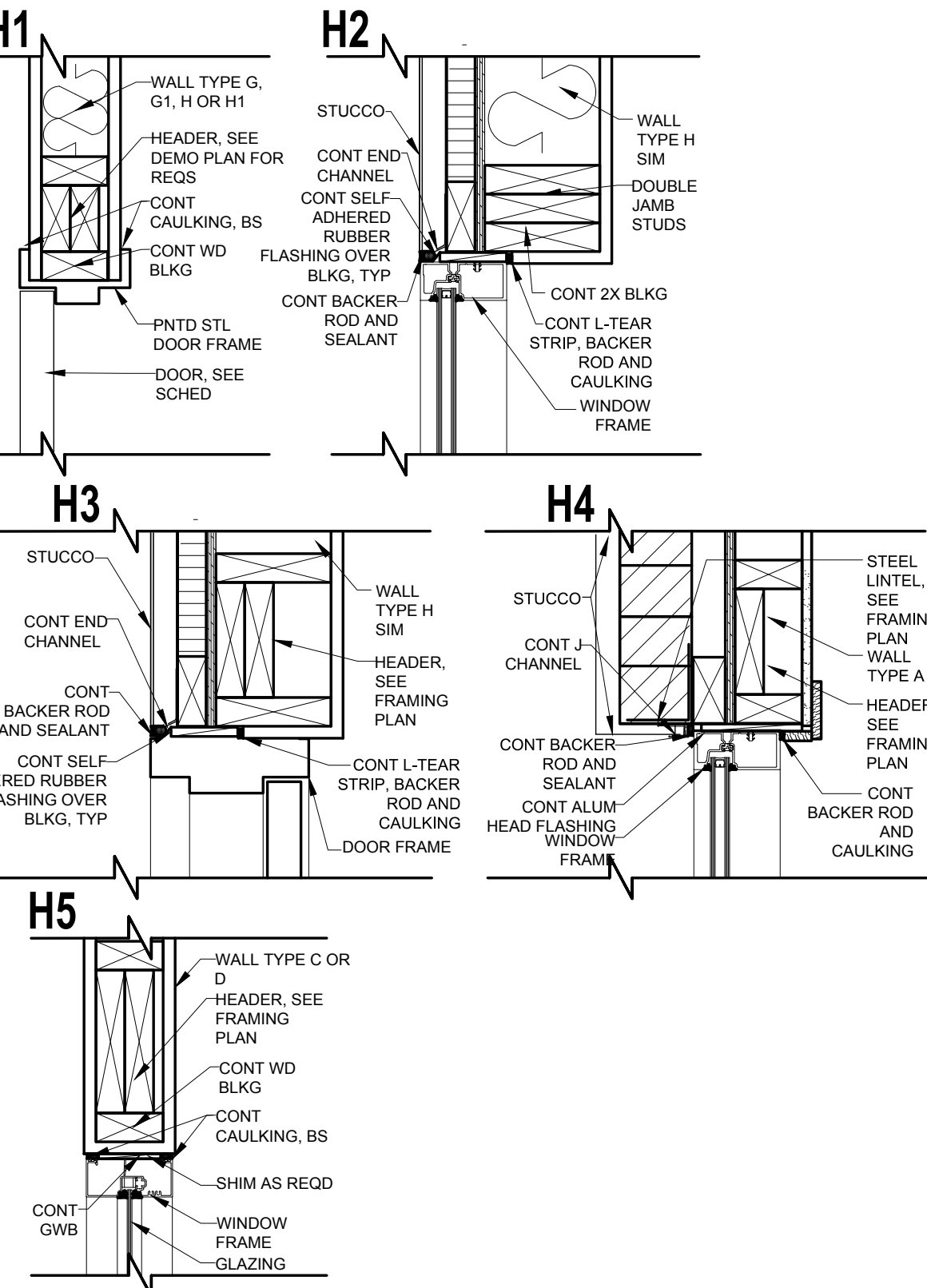
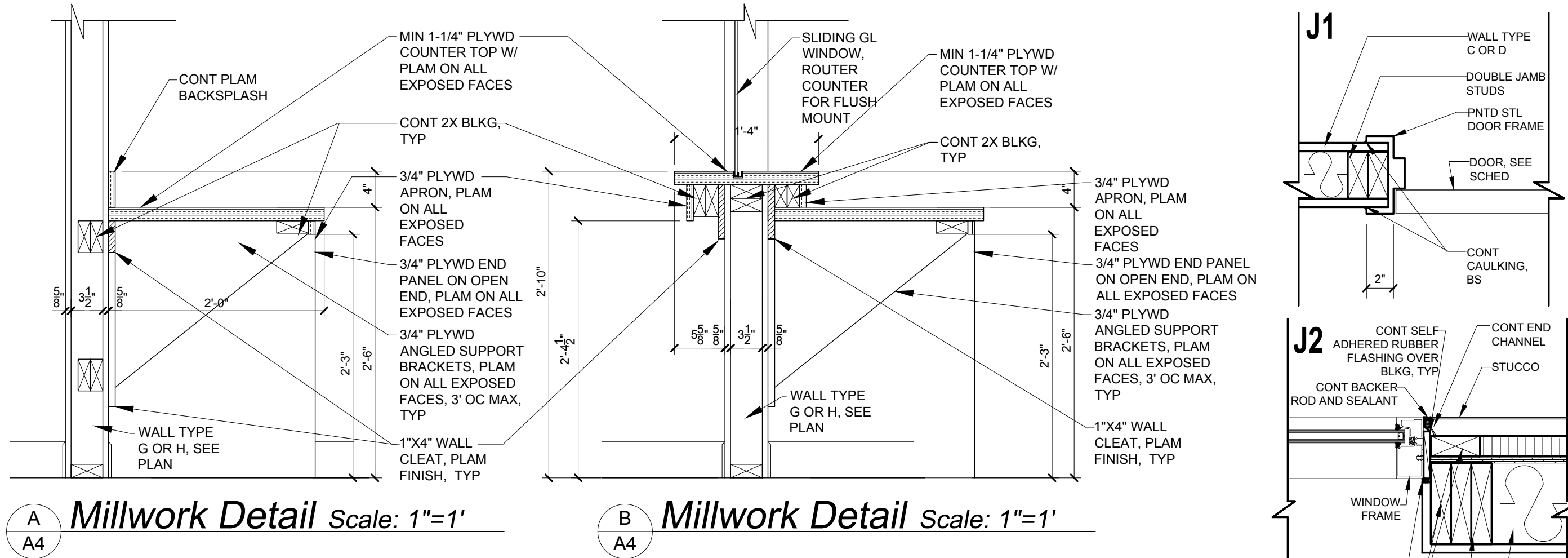
A3



1 A3 Upper Level Reflected Ceiling Plan Scale: 3/16"=1'



2 A3 Lower Level Reflected Ceiling Plan Scale: 3/16"=1'



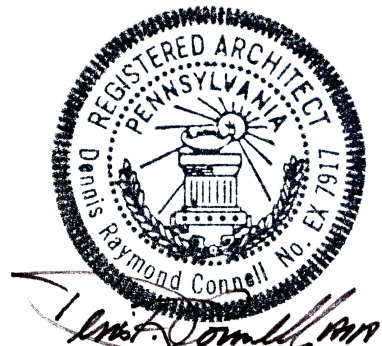
C A4 Millwork Detail Scale: 1"=1'

D A4 Millwork Detail Scale: 1"=1'

E A4 Millwork Detail Scale: 1"=1'

ALL DRAWINGS AND WRITTEN MATERIALS APPEARING HEREIN CONSTITUTE ORIGINAL AND UNPUBLISHED WORK OF THE ARCHITECT. THE REPRODUCTION OF THIS DRAWING FOR THE PURPOSE OF COPYING THIS WORK OR REVISING SAID DRAWING SHALL, IN NO CIRCUMSTANCE, BE APPROVED. THE REPRODUCTION OF THIS DRAWING FOR ANY OTHER PURPOSE IS PROHIBITED WITHOUT WRITTEN AUTHORIZATION OBTAINED FROM THE ARCHITECT. VIOLATION OF THIS RESTRICTION SHALL BE CONSIDERED A VIOLATION OF THE CODE OF ETHICS AND THEFT OF COMPANY ASSETS. BOTH OF WHICH SHALL BE PROSECUTED TO THE FULLEST EXTENT OF CURRENT STATUTES.

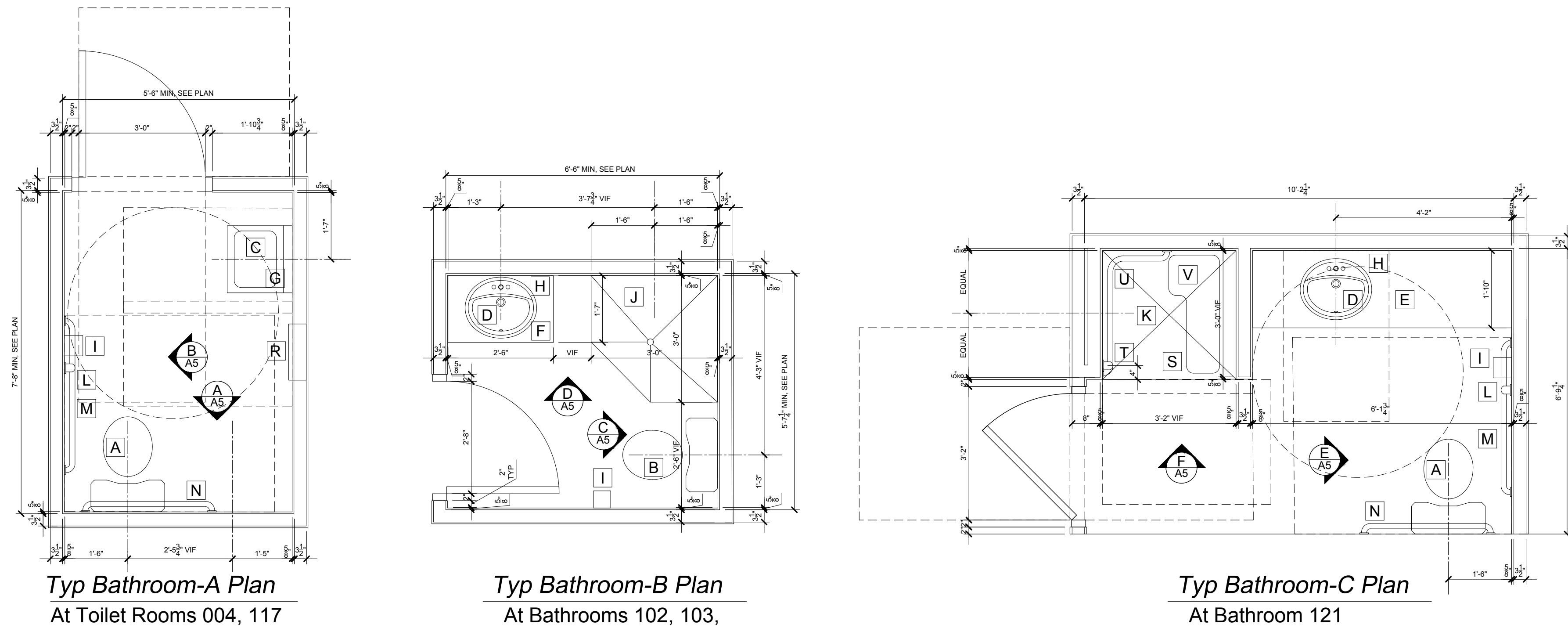
COPYRIGHT 2022



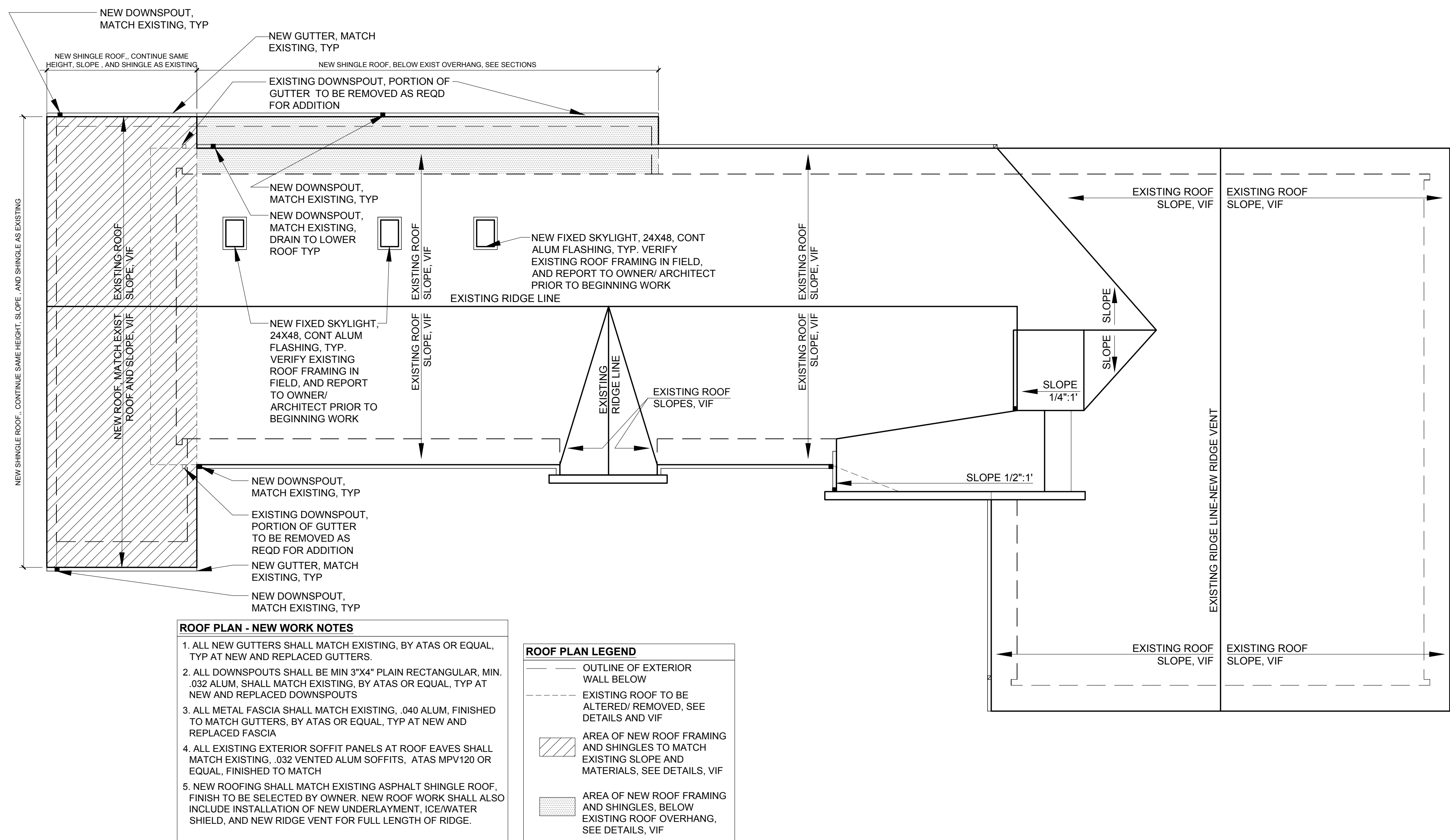
DAYBREAK TREATMENT SOLUTIONS
1288 VETERANS HIGHWAY
LEVITTOWN, PA
ALTERATIONS/ ADDITION TO
1288 VETERANS HIGHWAY
MIDDLETOWN TOWNSHIP, BUCKS COUNTY, PA
REFLECTED CEILING PLAN, WINDOW AND DOOR
TYPES, MILLWORK DETAILS

12/16/22
#745.01

FORMSPACE DESIGN
707 NORTH NEW STREET BETHLEHEM, PA 18018 (610) 865-6166

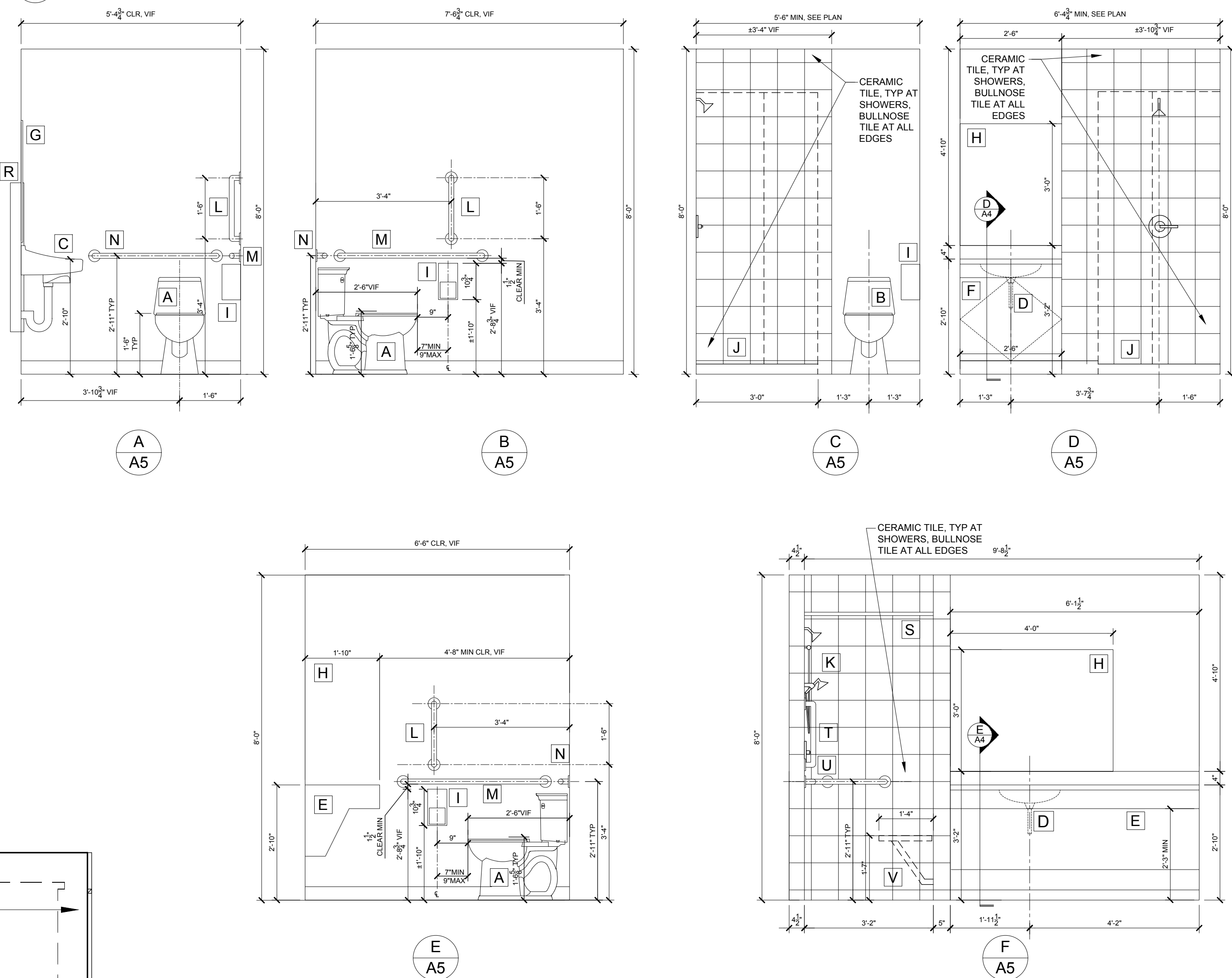


1
A5
Enlarged Bathroom Plans Scale: 1/2"=1'



7
A5
Roof Plan Scale: 1/8"=1'

2
A5
Bathroom Elevations Scale: 1/2"=1'



FIXTURE AND ACCESSORY SCHEDULE

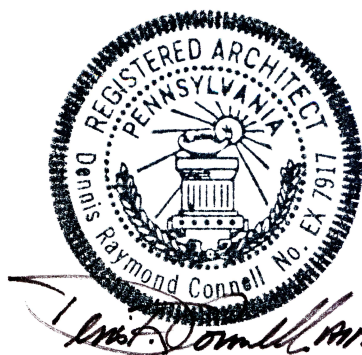
NO.	DESCRIPTION	PRODUCT	FINISH/ INFO	REMARKS	NO.	DESCRIPTION	PRODUCT	FINISH/ INFO	REMARKS
A	ADA TOILET	SEE PLUMBING DWGS	SEE PLUMBING DWGS	17"-19" SEAT HT. LEVER ON OPEN SIDE OF TANK, c SHALL BE 1'-6" OFF OF WALL FIN AT UNITS W/ GRAB BARS (HC UNITS)	M	42" HORIZ. GRAB BAR	BRADLEY 812 812-001-42	STAINLESS STEEL	33"-36" ABOVE FINISH FLOOR, 12" FROM CORNER
B	TOILET	SEE PLUMBING DWGS	SEE PLUMBING DWGS	17"-19" SEAT HT. LEVER ON SHOWER SIDE OF TANK, c SHALL BE 1'-3" OFF OF WALL FIN	N	36" HORIZ. GRAB BAR	BRADLEY 812 812-001-36	STAINLESS STEEL	33"-36" ABOVE FINISH FLOOR, 6" FROM CORNER
C	WALL MOUNTED SINK AND FAUCET	SEE PLUMBING DWGS	SEE PLUMBING DWGS	34" MAX HT TO RIM, ADA FAUCET, PROVIDE PIPE PADS ON ALL EXPOSED PIPES	O	WATER COOLER	ELKAY TWO STATION WALL MOUNTED EZSTL8C	STAINLESS STEEL BASIN W/ GRAY SHROUDS	MOUNT AT HEIGHTS AS REC BY MFR TO MEET ADA
D	COUNTER MOUNTED SINK	SEE PLUMBING DWGS	SEE PLUMBING DWGS	34" MAX HT TO RIM, ADA FAUCET, PROVIDE PIPE PADS ON ALL EXPOSED PIPES	P	MOP SINK	SEE PLUMBING DWGS	SEE PLUMBING DWGS	SEE PLUMBING DRAWINGS AND SPEC FOR MORE INFO
E	ADA VANITY	SEE DETAILS	SEE DETAILS	34" MAX HT TO RIM, ADA FAUCET, PROVIDE PIPE PADS ON ALL EXPOSED PIPES	Q	DROP IN SINK AND FAUCET	SEE PLUMBING DWGS	SEE PLUMBING DWGS	34" MAX HT TO RIM, ADA FAUCET, PROVIDE PIPE PADS ON ALL EXPOSED PIPES
F	VANITY	SEE DETAILS	SEE DETAILS	34" MAX HT TO RIM, ADA FAUCET, PROVIDE PIPE PADS ON ALL EXPOSED PIPES	R	PAPER TOWELS/ WASTE RECEPTACLE	BRADLEY MODEL 235	STAINLESS STEEL	MOUNT AT 42" TO OPERABLE PORTION
G	STAINLESS STEEL FRAMED MIRROR	BOBRICK B-290 2436	--	SEE TOILET ROOM ELEVATIONS FOR MORE INFORMATION	S	SHOWER CURTAIN ROD	1" OD PIPE ROD	STAINLESS STEEL	MOUNT AT 6'-8" TO BOTTOM OF ROD
H	FRAMELESS MIRROR	BY GC	--	SEE TOILET ROOM ELEVATIONS FOR DIMENSIONS	T	18" VERT. GRAB BAR	BRADLEY 812 812-001-18	STAINLESS STEEL	39"-41" HT ABOVE FLOOR, 4" MAX FROM OPG OF SHWR
I	TOILET PAPER DISPENSER	BRADLEY 5402	SATIN FINISH STAINLESS STEEL	7'-9" TO FRONT OF TOILET, 14'-19" HT TO OUTLET, AT ACCESSIBLE WATER CLOSETS	U	2-WALL HORIZ. GRAB BAR	BRADLEY B-6861	STAINLESS STEEL	33"-36" HT ABOVE FLR
J	CORNER SHOWER STALL AND FAUCET	MUSTEE 3636CM CORNER W/ MUSTEE 36.761 ENCLOSURE, SEE PLUMBING DWGS FOR FAUCET	DURABASE. COLOR TO BE SELECTED	TILE WALLS THROUGHOUT, TYP	V	ADA FOLDING SHOWER SEAT	ASI 8203, 28" WIDE	STAINLESS STEEL AND PHENOLIC	SEAT AT 17-18" WHEN IN OPEN POSITION
K	TRANSFER TYPE ADA SHOWER STALL AND FAUCET	BRADLEY 812 812-001-18	STAINLESS STEEL	39"-41" TO BACK WALL, 33"-36" HT ABOVE FLR					
L	18" VERT. GRAB BAR								

NOTES:

1. CONTRACTOR SHALL COORDINATE ALL FINAL FIXTURE AND ACCESSORY SELECTIONS AND LOCATIONS WITH OWNER PRIOR TO COMMENCING ANY WORK.
2. CONTRACTOR SHALL VERIFY IN FIELD THAT FIXTURES AND ACCESSORIES ARE LOCATED AND INSTALLED TO ALLOW FOR REQUIRED CLEAR SPACES AND IN ACCORDANCE WITH REACH RANGES AND OTHER REQUIREMENTS NOTED AND OUTLINED BY ANSI A117.1-2009
3. INSTALL BLOCKING WITHIN WALL CAVITY FOR INSTALLATION OF ALL GRAB BARS AS REQUIRED TO SUPPORT A MIN VERTICAL AND HORIZONTAL FORCE OF 250 LBS APPLIED AT ANY POINT.

ALL DRAWINGS AND WRITTEN MATERIALS APPEARING HEREIN CONSTITUTE ORIGINAL AND UNPUBLISHED WORK OF THE ARCHITECT. THE REPRODUCTION OF THIS DRAWING FOR THE PURPOSE OF COPYING THIS WORK, OR REVISING SAID DRAWING SHALL, IN NO CIRCUMSTANCE, BE APPROVED. THE REPRODUCTION OF THIS DRAWING FOR ANY OTHER PURPOSE IS PROHIBITED WITHOUT WRITTEN AUTHORIZATION OBTAINED FROM THE ARCHITECT. VIOLATION OF THIS RESTRICTION SHALL BE CONSIDERED A VIOLATION OF THE CODE OF ETHICS AND THEFT OF COMPANY ASSETS, BOTH OF WHICH SHALL BE PROSECUTED TO THE FULLEST EXTENT OF CURRENT STATUTES.

COPYRIGHT 2022

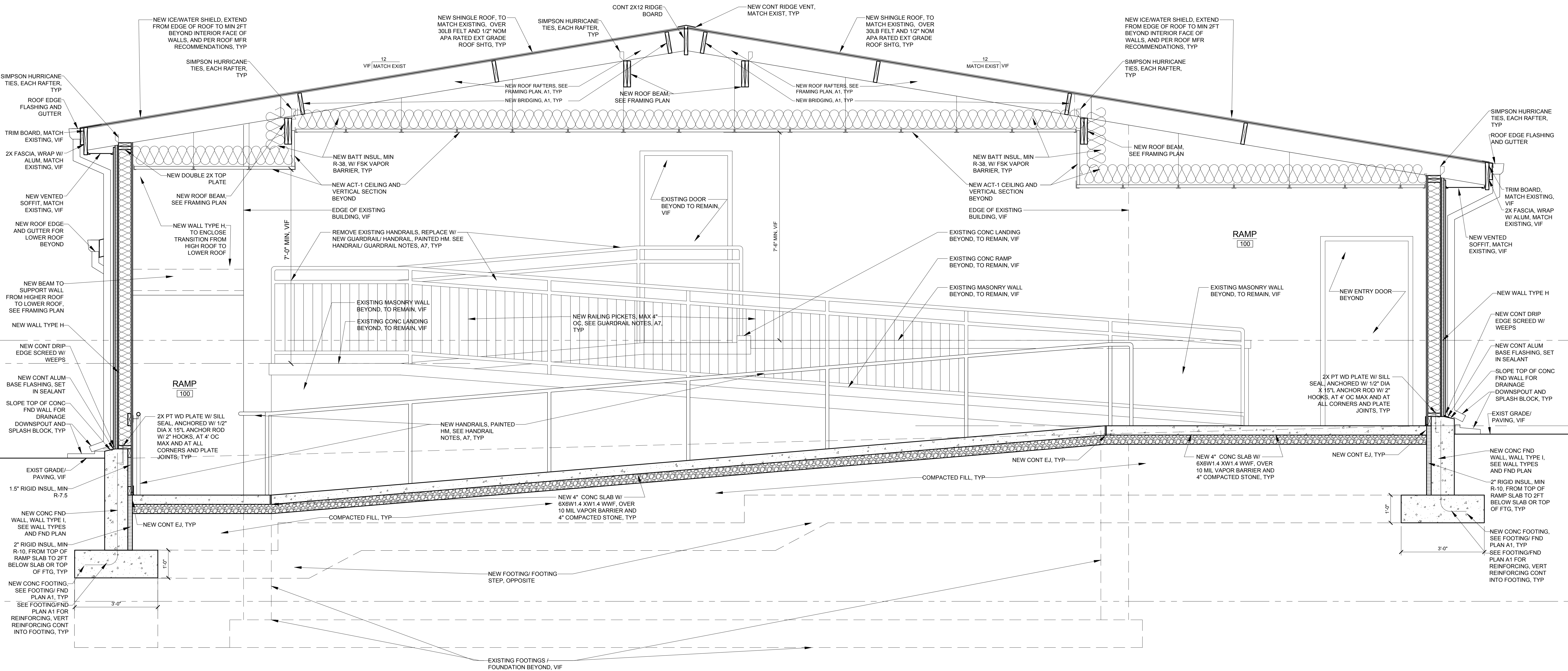


DAYBREAK TREATMENT SOLUTIONS
1288 VETERANS HIGHWAY
LEVITTOWN, PA
ALTERATIONS/ ADDITION TO
1288 VETERANS HIGHWAY
MIDDLETOWN TOWNSHIP, BUCKS COUNTY, PA
ENLARGED TOILET ROOM PLANS, ELEVATIONS,
FIXTURE SCHEDULE, ROOF PLAN

12/16/22
#745.01

FORM SPACE DESIGN
707 NORTH NEW STREET BETHLEHEM, PA 18018 (610) 865-6166

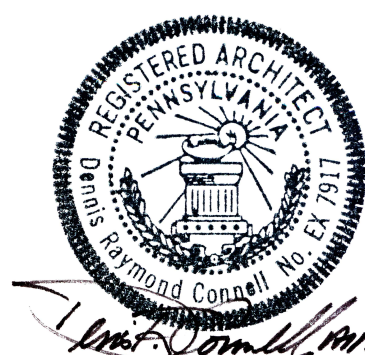
A5



1 Building Section Scale: NTS
A6

ALL DRAWINGS AND WRITTEN MATERIALS APPEARING HEREIN CONSTITUTE ORIGINAL AND UNPUBLISHED WORK OF THE ARCHITECT. THE REPRODUCTION OF THIS DRAWING FOR THE PURPOSE OF COPYING THIS WORK, OR REVISING SAID DRAWING SHALL, IN NO CIRCUMSTANCE, BE APPROVED. THE REPRODUCTION OF THIS DRAWING FOR ANY OTHER PURPOSE IS PROHIBITED WITHOUT WRITTEN AUTHORIZATION OBTAINED FROM THE ARCHITECT. VIOLATION OF THIS RESTRICTION SHALL BE CONSIDERED A VIOLATION OF THE CODE OF ETHICS AND THEFT OF COMPANY ASSETS, BOTH OF WHICH SHALL BE PROSECUTED TO THE FULLEST EXTENT OF CURRENT STATUTES.

COPYRIGHT 2022



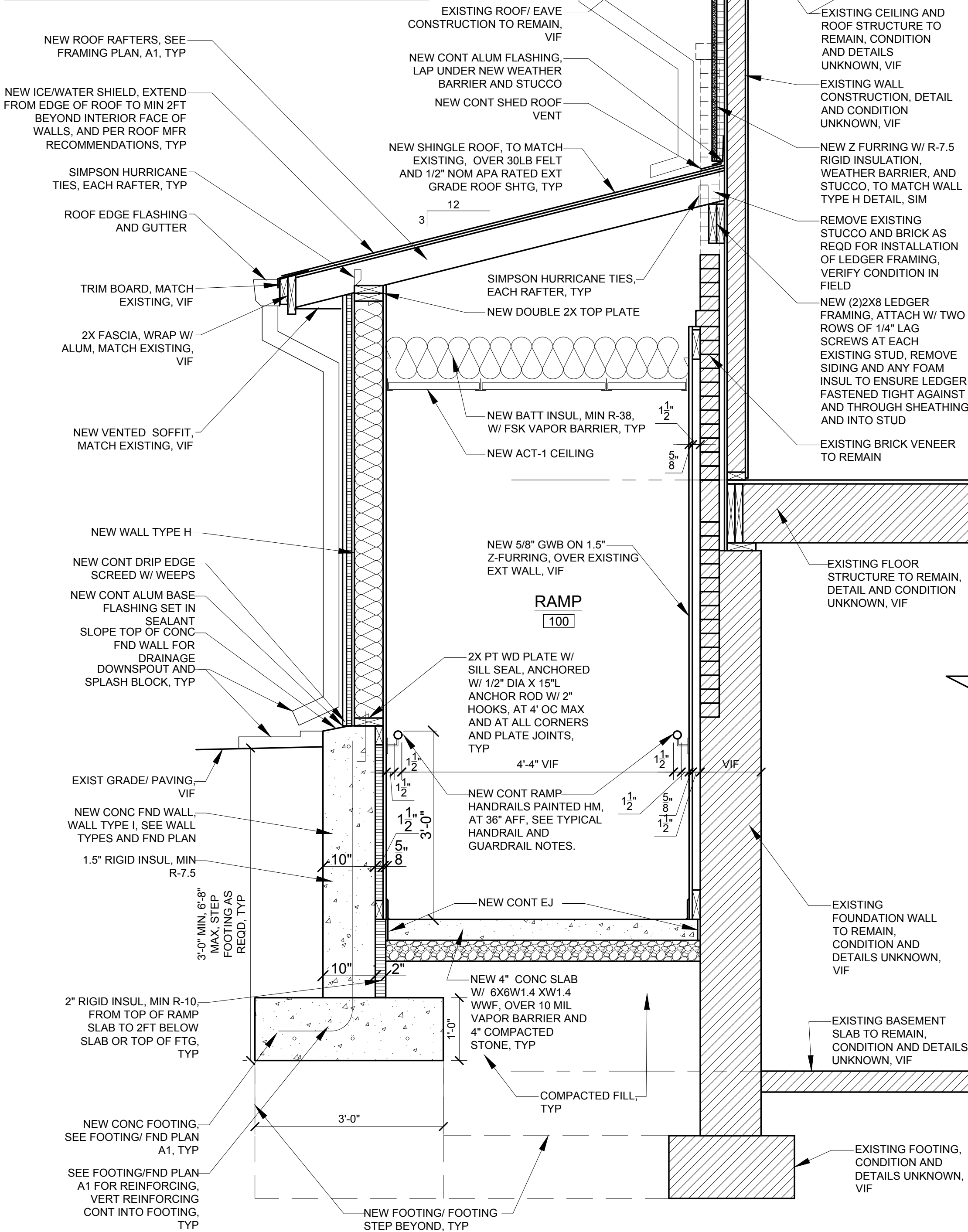
DAYBREAK TREATMENT SOLUTIONS 12/16/22
1288 VETERANS HIGHWAY
LEVITTOWN, PA #745.01
ALTERATIONS/ ADDITION TO
1288 VETERANS HIGHWAY
MIDDLETOWN TOWNSHIP, BUCKS COUNTY, PA
BUILDING SECTION

FORM SPACE DESIGN
707 NORTH NEW STREET BETHLEHEM, PA 18018 (610) 865-6166

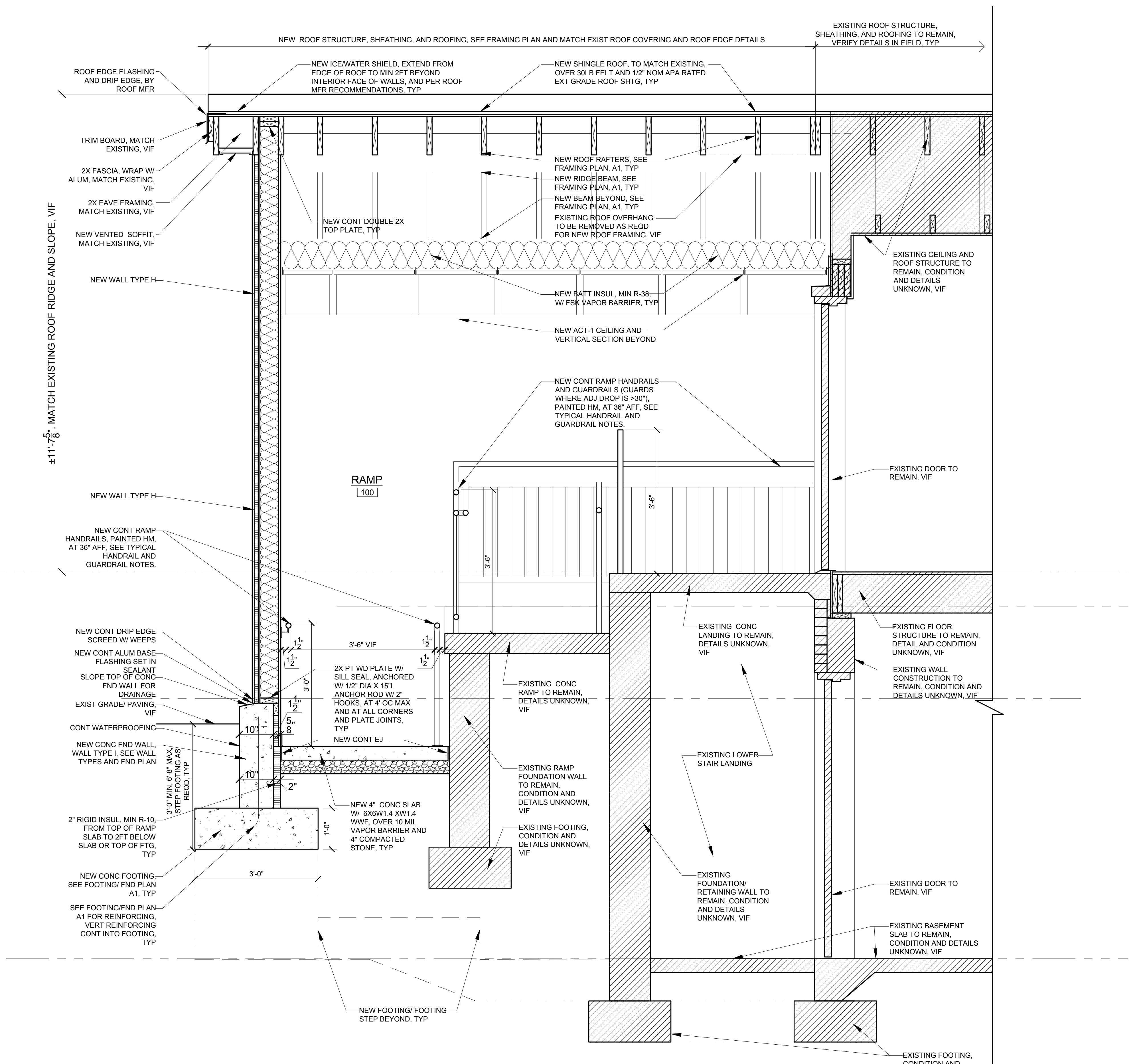
A6

TYPICAL HANDRAIL AND GUARDRAIL NOTES

- HANDRAILS SHALL CONFORM TO THE FOLLOWING REQUIREMENTS:
 - HANDRAILS SHALL BE 1-1/2" OD PAINTED HOLLOW METAL PIPE.
 - HANDRAIL HEIGHT SHALL BE NOT LESS THAN 34" AND NOT MORE THAN 38" ABOVE STEP NOSING OR SURFACE OF RAMP.
 - CONT EDGE PROTECTION RAIL SHALL BE INCORPORATED WITHIN 4" OF THE SURFACE OF RAMPS, SO THAT IT DOES NOT ALLOW THE PASSAGE OF A 4" DIA SPHERE.
 - HANDRAILS SHALL BE CONTINUOUS, WITHOUT INTERRUPTION BY NEWEL POSTS OR OTHER OBSTRUCTIONS. HANDRAIL SHALL RETURN TO WALL OR FLOOR AT ENDS OF RUNS.
 - HANDRAILS SHALL BE CONSTRUCTED AND ANCHORED AS REQUIRED TO RESIST A CONCENTRATED LOAD OF 300 LBS, AND AN OVERALL LOAD OF 50 PLF.
- WHERE DROP BEYOND EDGE OF RAMP OR LANDING IS GREATER THAN 30", GUARDRAILS ARE REQUIRED AND SHALL CONFORM TO THE FOLLOWING REQUIREMENTS:
 - GUARDRAILS SHALL BE 1-1/2" OD PAINTED HOLLOW METAL PIPE.
 - GUARDRAIL HEIGHT SHALL BE MINIMUM 42"
 - GUARDRAILS SHALL NOT HAVE OPENINGS THAT ALLOW THE PASSAGE OF A 4" DIA SPHERE.
 - GUARDRAILS SHALL BE CONSTRUCTED AND ANCHORED AS REQUIRED TO RESIST A CONCENTRATED LOAD OF 300 LBS, AND AN OVERALL LOAD OF 50 PLF.



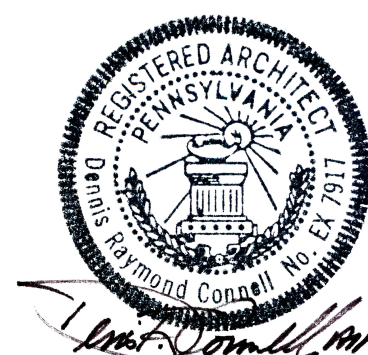
1 Ramp Addition Section Scale: 3/4"=1'



2 Ramp Addition Section Scale: 3/4"=1'

ALL DRAWINGS AND WRITTEN MATERIALS APPEARING HEREIN CONSTITUTE ORIGINAL AND UNPUBLISHED WORK OF THE ARCHITECT. THE REPRODUCTION OF THIS DRAWING FOR THE PURPOSE OF COPYING THIS WORK, OR REVISIONS SAID DRAWING SHALL, IN NO CIRCUMSTANCE, BE APPROVED. THE REPRODUCTION OF THIS DRAWING FOR ANY OTHER PURPOSE IS PROHIBITED WITHOUT WRITTEN AUTHORIZATION OBTAINED FROM THE ARCHITECT. VIOLATION OF THIS RESTRICTION SHALL BE CONSIDERED A VIOLATION OF THE CODE OF ETHICS AND THEFT OF COMPANY ASSETS, BOTH OF WHICH SHALL BE PROSECUTED TO THE FULLEST EXTENT OF CURRENT STATUTES.

COPYRIGHT 2022



DAYBREAK TREATMENT SOLUTIONS
1288 VETERANS HIGHWAY
LEVITTOWN, PA
ALTERATIONS/ ADDITION TO
1288 VETERANS HIGHWAY
MIDDLETOWN TOWNSHIP, BUCKS COUNTY, PA
BUILDING SECTIONS

12/16/22

#745.01

FORM SPACE DESIGN
707 NORTH NEW STREET BETHLEHEM, PA 18018 (610) 865-6166

A7

