

**MSC**

FISHTOWN | PHILADELPHIA, PA

±23,588 SF (DIVISIBLE)

N. FRONT  
STREET



1750 N. FRONT STREET



JOIN NEIGHBORING TENANTS

**LMNO**  
Kalaya

Goldie  
**CITY FITNESS**  
× PHILADELPHIA ×



DEMOGRAPHICS

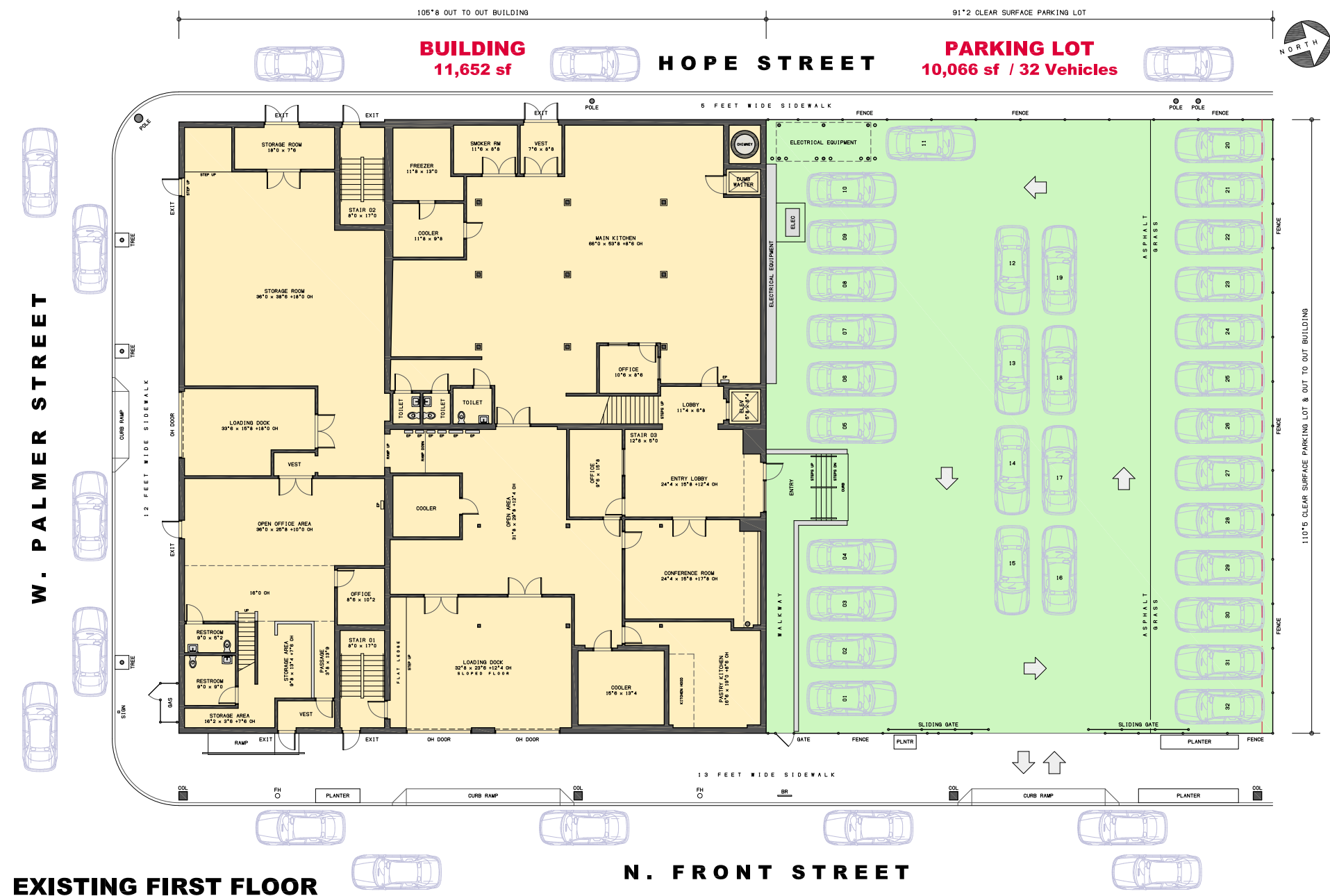
EST. POPULATION  
**1 mi 70,501**

EST. MEDIAN AGE  
**1 mi 34.1**

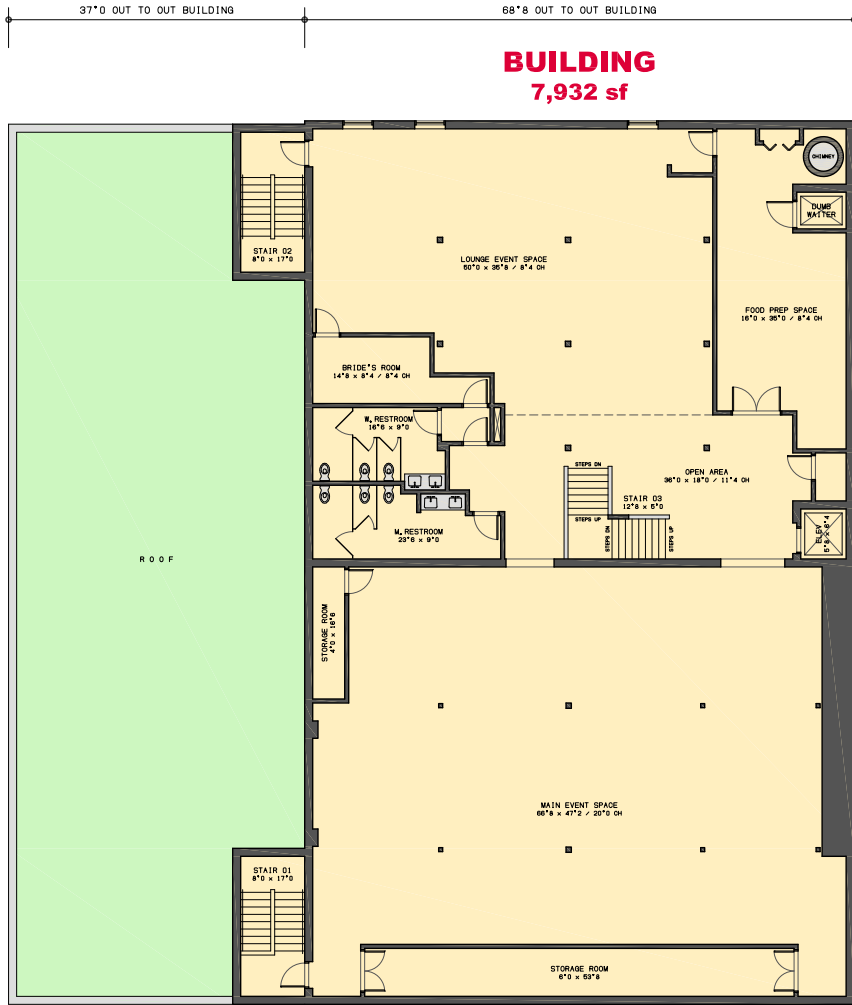
PROPERTY DETAILS

- ▶ 23,588 SF over three floors plus 32 parking spots and two loading docks
- ▶ First Floor: Full commercial kitchen, office space, storage and five restrooms
- ▶ Second Floor: Open floor plan for events, reception area and prep kitchen
- ▶ Third floor: Storage/attic space, ADA accessible
- ▶ Available Fall 2024

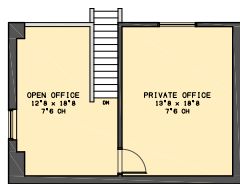
FLOOR PLAN



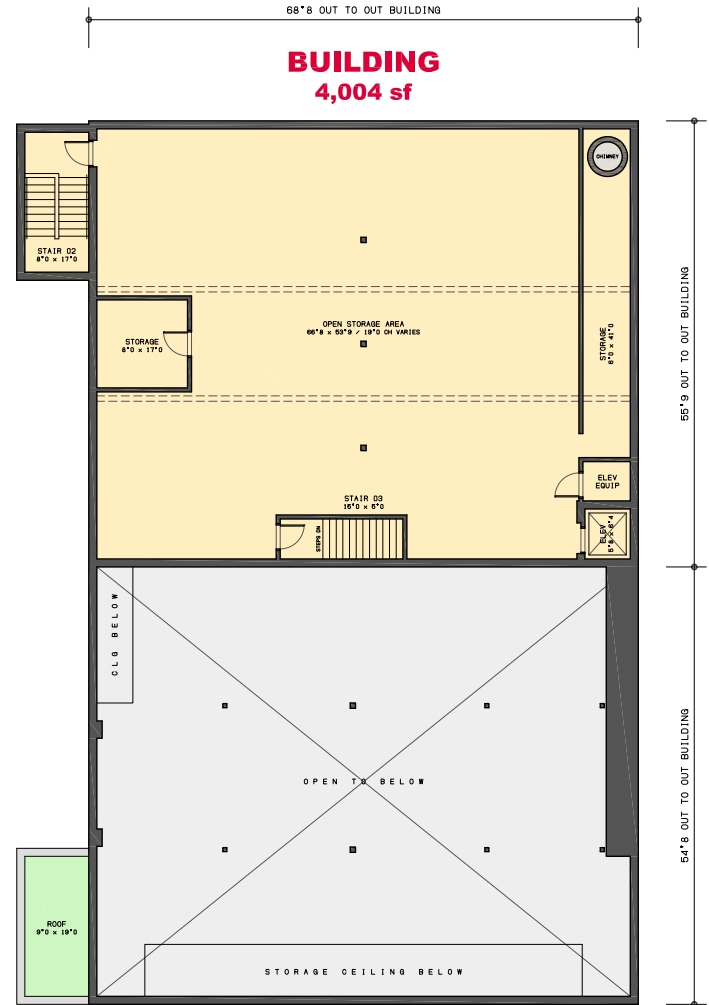
# FLOOR PLAN



**EXISTING SECOND FLOOR**



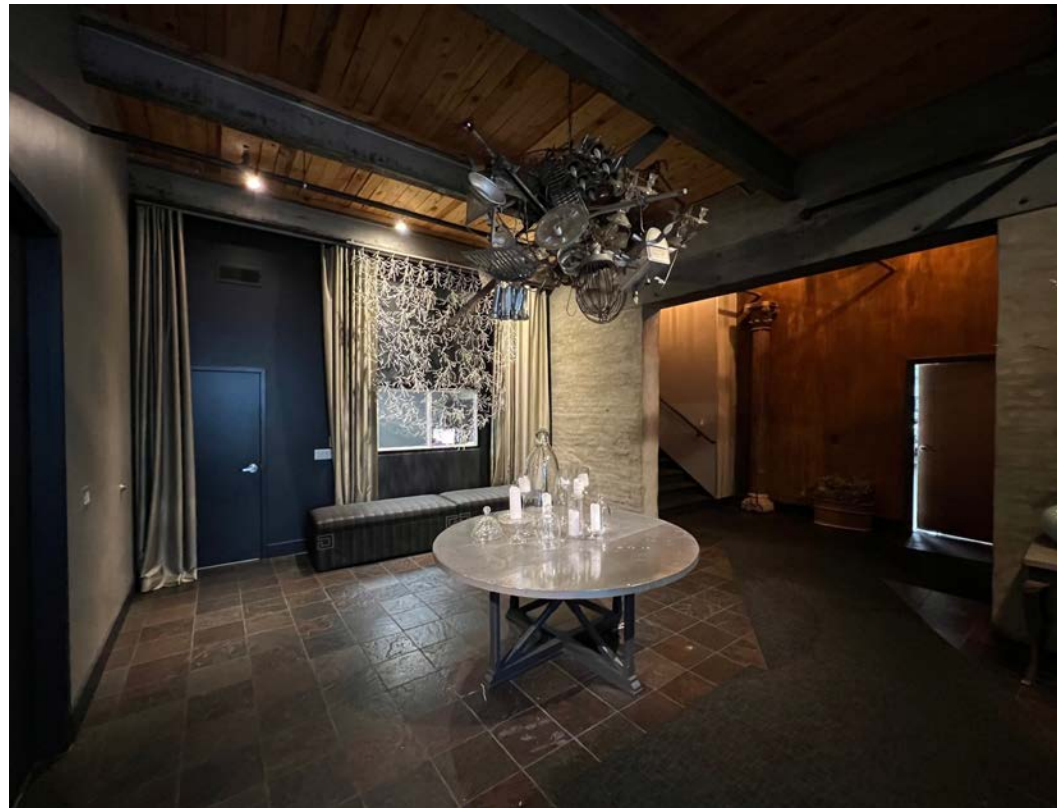
**EXISTING OFFICE MEZZANINE**



**EXISTING THIRD FLOOR**



ENTRANCE



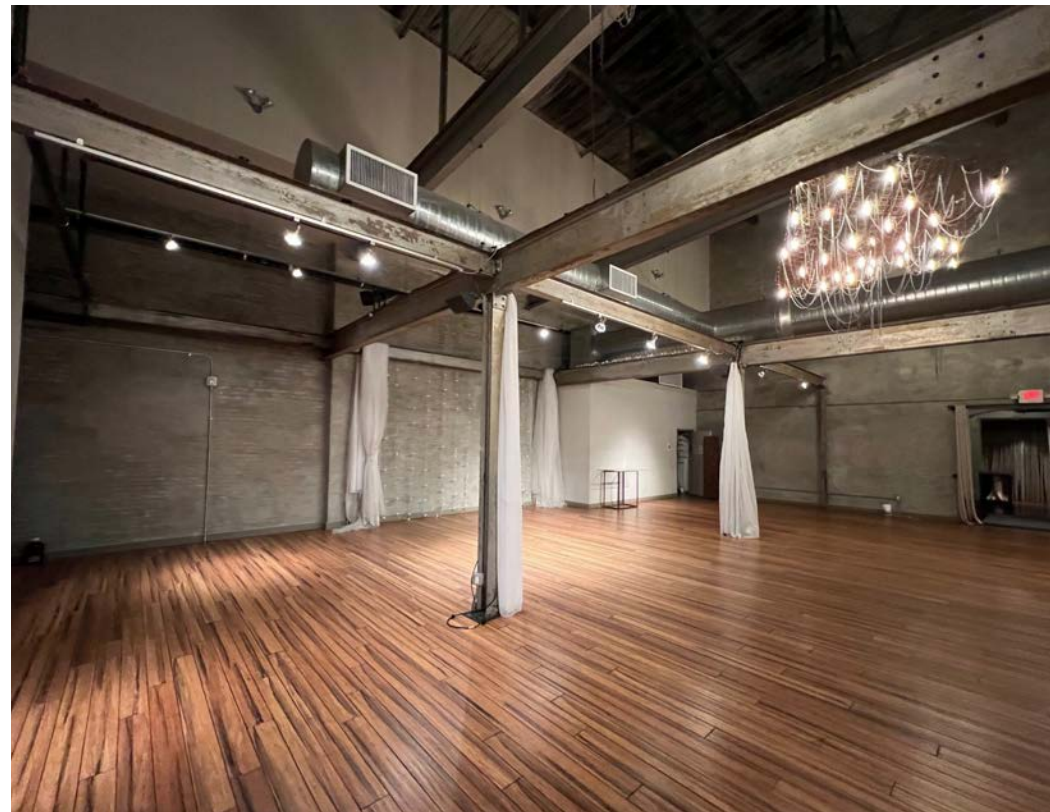
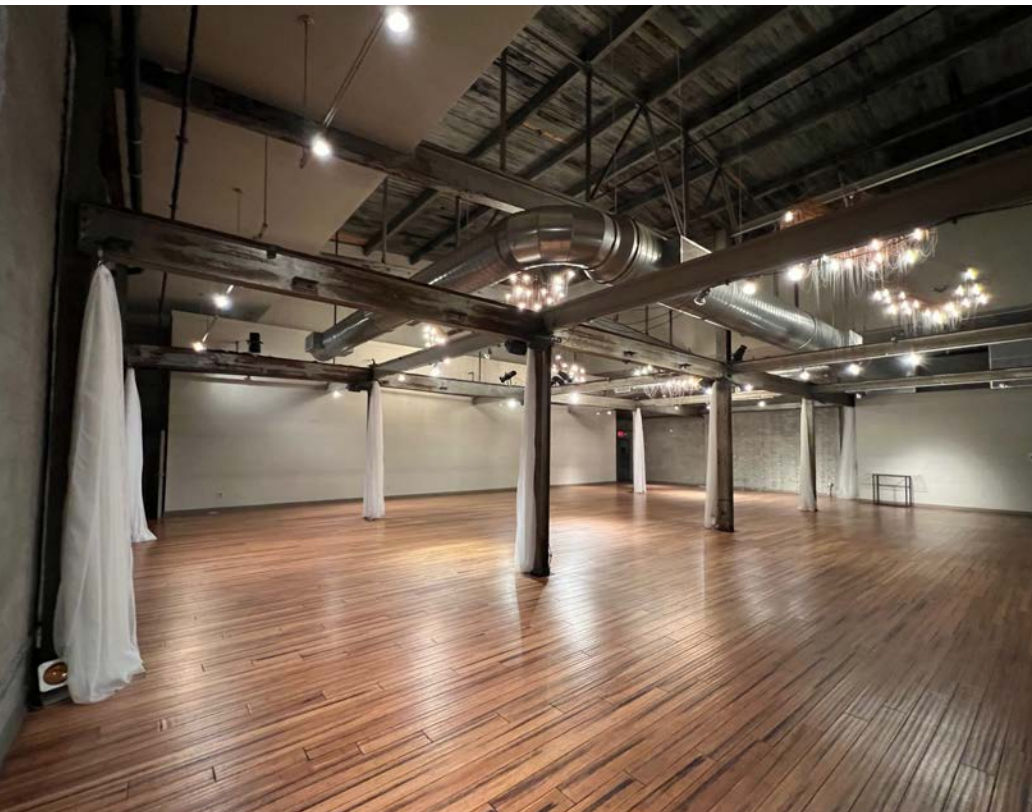
KITCHEN



KITCHEN



SECOND FLOOR





CONSULTATION ROOM



PARKING



# AERIAL



LMNO

*Feast your eyes*

# MSC



**JACOB COOPER**

[jcooper@hellomsc.com](mailto:jcooper@hellomsc.com)

215.883.7402

**ANNELLYSE CHAN**

[achan@hellomsc.com](mailto:achan@hellomsc.com)

215.883.7379