



1378 PASEO VERDE PKWY STE 200
HENDERSON, NV 89012



STEPHANIE PLACE
±4,322 SF | FOR SALE
2ND FLOOR OFFICE SUITE

PROPERTY HIGHLIGHTS

Stephanie Place Professional Park
1378 Paseo Verde Pkwy STE 200, Henderson, NV 89012

\$1,426,260

SALE PRICE | \$330 PSF

- Fully Built-Out Second Floor Office Space
- Stephanie Place Professional Park consists of six two-story office buildings
- Frontage along Stephanie St and two ingress/egress points along Paseo Verde Pkwy
- Site has easy access to I-215 Beltway via Stephanie St interchange
- Well maintained common area parking with handicap spaces and landscaping
- Area is surrounded by numerous restaurants, retail, medical/office business
- Close to high income communities of MacDonand Highlands, Ascaya, and Green Valley Ranch



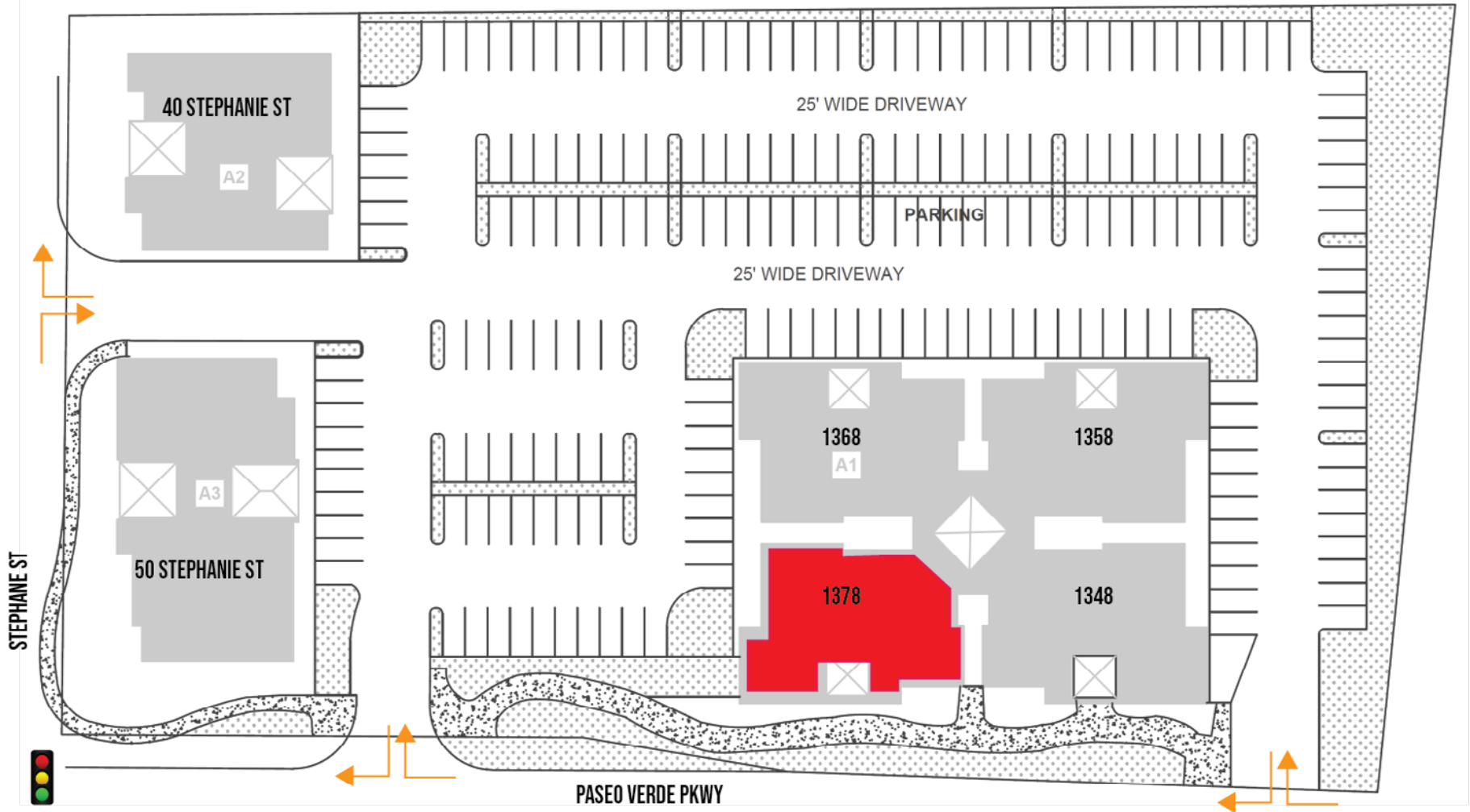
± 4,322 SF
TOTAL AREA

OFFICE COMMERCIAL (CO)
ZONING

178-22-118-017
APN

STEPHANIE PLACE SITE PLAN

Stephanie Place Professional Park
1378 Paseo Verde Pkwy STE 200, Henderson, NV 89012



SUITE 200 FLOOR PLAN

Stephanie Place Professional Park
1378 Paseo Verde Pkwy STE 200, Henderson, NV 89012

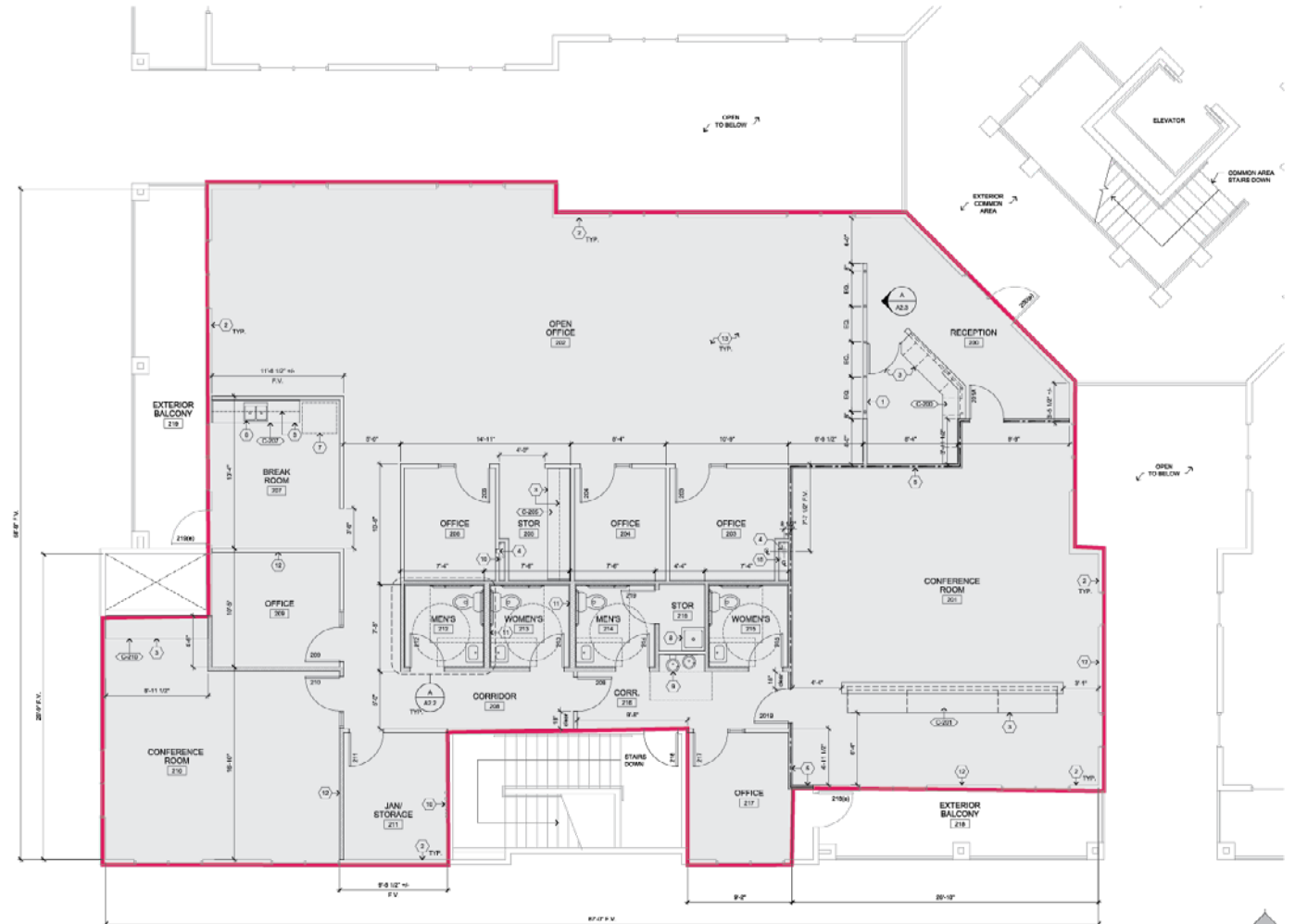
± 4,322 SF
SECOND FLOOR

About the Suite

- Five (5) Private Offices
- Large Open Office space
- Two (2) Conference Rooms
- (1) Breakroom
- Two (2) Storage space
- Four (4) Restrooms
- Lobby/Reception Area



CLICK HERE FOR
VIRTUAL TOUR



A SECOND FLOOR PLAN
SCALE: 1/4" = 1'-0"

DETAILED AERIAL

Stephanie Place Professional Park
1378 Paseo Verde Pkwy STE 200, Henderson, NV 89012



HARRY REID INTERNATIONAL AIRPORT

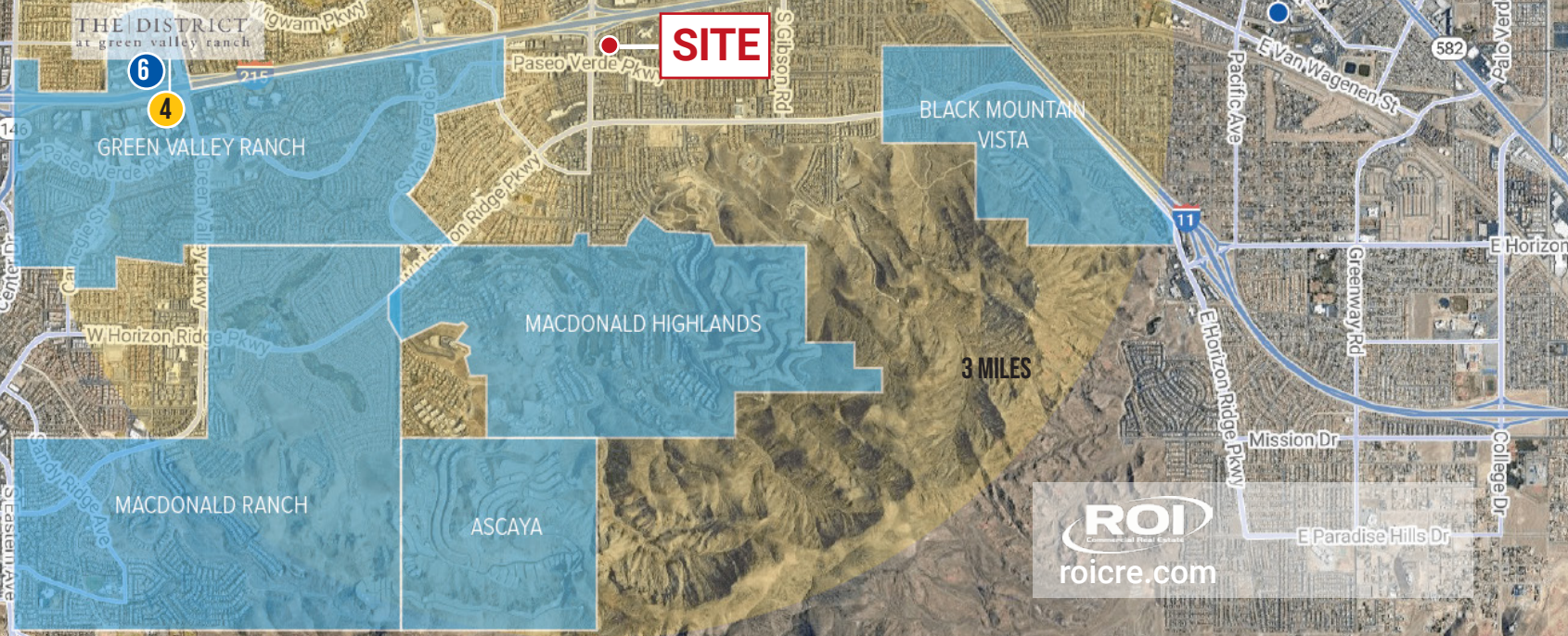
BUSINESS PARKS

- 1 Gibson Business Park
- 2 Valley AutoMall
- 3 Pacific Business Center
- 4 Black Mountain Business Park
- 5 Cornerstone
- 6 Green Valley Corporate Center

MAJOR RETAIL CORRIDORS

- 1 Galleria Mall Area
- 2 Sunset & Green Valley
- 3 St Rose & Eastern
- 4 The District at Green Valley Ranch
- 5 Lake Mead & Boulder

SITE



3 MILES



DRIVETIME MAP



Harry Reid International Airport 16 min | 12.2 Miles


Galleria at Sunset 11 min | 5.5 Miles



1378 PASEO VERDE PKWY STE 200,
HENDERSON NV, 89012

FOR MORE INFORMATION


BRIAN SORRENTINO, CCIM

 702.550.4932

 brian@roicre.com

Lic # S.0057473

ANGELICA M. CLEMMER, CCIM

 702.550.4937

 angelica@roicre.com

Lic # S.0177553

ISABELLA J SORRENTINO, CCIM

 702.550.4294

 isabella@roicre.com

Lic # S.0183489

DISCLAIMER

All information contained herein is from sources we deem reliable, and we have no reason to doubt its accuracy; however, no guarantee or responsibility is assumed thereof, and it shall not form any part of future contracts. Properties are submitted subject to errors and omissions and all information should be carefully verified. All measurements quoted herein are approximate.

Demographics are provided by SitesUSA using data from private and government sources deemed to be reliable. The information herein is provided without representation or warranty.


Georeferenced data herein are provided by Placer Labs, Inc. and is provided without representation or warranty.

Photos contained herein are property of their respective owners. Photos do not guarantee the current condition of the property.

Let's keep in touch.



www.roicre.com

 9121 W Russell Rd
Suite 111
Las Vegas, NV 89148