

FIELDS & IVY BREWING COMPANY

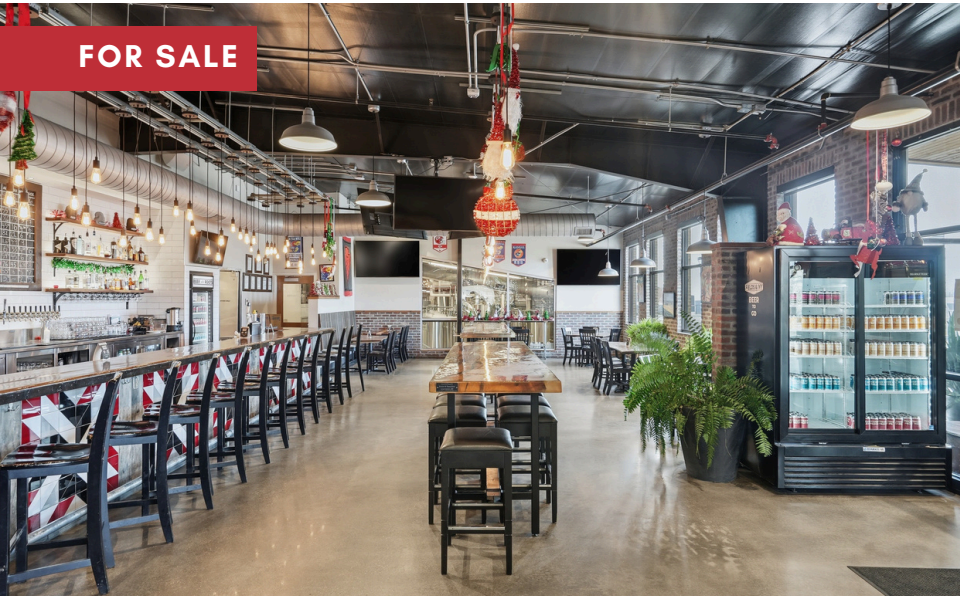
706 E 23RD STREET, LAWRENCE, KS 66048



REECE
COMMERCIAL REAL ESTATE

a Berkshire Hathaway Affiliate

FOR SALE



THE THOME TEAM



913.548.8700



JTHOME@REECECOMMERCIAL.COM

PROPERTY DETAILS

\$3,250,000

- 9,740 SQFT BREWERY LOCATED IN A VIBRANT COLLEGE TOWN
- GREAT OPPORTUNITY FOR GROWTH WITH NEW OWNERSHIP
- MULTIPLE REVENUE STREAMS: ON SITE TAP ROOM, RESTAURANT/DINING EXPERIENCES, OUTDOOR BEER GARDEN, PACKAGED TO GO BEER AND BREWERY DISTRIBUTION WITH BEER IN OVER 300+ BARS & LIQUOR STORES
- GROWTH POTENTIAL FOR UP TO APPROX 15,000 BARRELS A YEAR
- COMMUNITY & CULTURAL ANCHOR IN LAWRENCE
- MAJOR REMODEL IN 2018-2019

The information above has been obtained from sources believed reliable. While we do not doubt its accuracy we have not verified it and make no guarantee, warranty or representation about it. It is your responsibility to independently confirm its accuracy and completeness. Any projections, opinions, assumptions, or estimates used are for example only and do not represent the current or future performance of the property. You and your advisors should conduct a careful, independent investigation of the property to determine to your satisfaction the suitability of the property for your needs. © 2020

FIELDS & IVY BREWING COMPANY

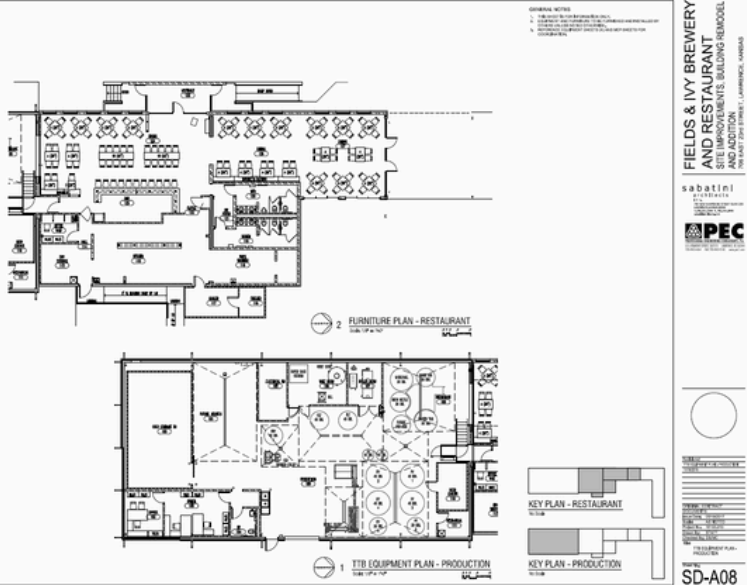
706 E 23RD STREET, LAWRENCE, KS 66048



REECE

COMMERCIAL REAL ESTATE

a Berkshire Hathaway Affiliate



THE THOME TEAM



913.548.8700



JTHOME@REECECOMMERCIAL.COM

The information above has been obtained from sources believed reliable. While we do not doubt its accuracy we have not verified it and make no guarantee, warranty or representation about it. It is your responsibility to independently confirm its accuracy and completeness. Any projections, opinions, assumptions, or estimates used are for example only and do not represent the current or future performance of the property. You and your advisors should conduct a careful, independent investigation of the property to determine to your satisfaction the suitability of the property for your needs. © 2020

FIELDS & IVY BREWING COMPANY

706 E 23RD STREET, LAWRENCE, KS 66048



REECE

COMMERCIAL REAL ESTATE

a Berkshire Hathaway Affiliate



THE THOME TEAM



913.548.8700



JTHOME@REECECOMMERCIAL.COM

The information above has been obtained from sources believed reliable. While we do not doubt its accuracy we have not verified it and make no guarantee, warranty or representation about it. It is your responsibility to independently confirm its accuracy and completeness. Any projections, opinions, assumptions, or estimates used are for example only and do not represent the current or future performance of the property. You and your advisors should conduct a careful, independent investigation of the property to determine to your satisfaction the suitability of the property for your needs. © 2020

FIELDS & IVY BREWING COMPANY

706 E 23RD STREET, LAWRENCE, KS 66048



REECE

COMMERCIAL REAL ESTATE

a Berkshire Hathaway Affiliate



THE THOME TEAM



913.548.8700



JTHOME@REECECOMMERCIAL.COM

The information above has been obtained from sources believed reliable. While we do not doubt its accuracy we have not verified it and make no guarantee, warranty or representation about it. It is your responsibility to independently confirm its accuracy and completeness. Any projections, opinions, assumptions, or estimates used are for example only and do not represent the current or future performance of the property. You and your advisors should conduct a careful, independent investigation of the property to determine to your satisfaction the suitability of the property for your needs. © 2020

FIELDS & IVY BREWING COMPANY

706 E 23RD STREET, LAWRENCE, KS 66048



REECE

COMMERCIAL REAL ESTATE

a Berkshire Hathaway Affiliate



THE THOME TEAM



913.548.8700



JTHOME@REECECOMMERCIAL.COM

The information above has been obtained from sources believed reliable. While we do not doubt its accuracy we have not verified it and make no guarantee, warranty or representation about it. It is your responsibility to independently confirm its accuracy and completeness. Any projections, opinions, assumptions, or estimates used are for example only and do not represent the current or future performance of the property. You and your advisors should conduct a careful, independent investigation of the property to determine to your satisfaction the suitability of the property for your needs. © 2020

FIELDS & IVY BREWING COMPANY

706 E 23RD STREET, LAWRENCE, KS 66048



REECE

COMMERCIAL REAL ESTATE

a Berkshire Hathaway Affiliate



THE THOME TEAM



913.548.8700



JTHOME@REECECOMMERCIAL.COM

The information above has been obtained from sources believed reliable. While we do not doubt its accuracy we have not verified it and make no guarantee, warranty or representation about it. It is your responsibility to independently confirm its accuracy and completeness. Any projections, opinions, assumptions, or estimates used are for example only and do not represent the current or future performance of the property. You and your advisors should conduct a careful, independent investigation of the property to determine to your satisfaction the suitability of the property for your needs. © 2020

FIELDS & IVY BREWING COMPANY

706 E 23RD STREET, LAWRENCE, KS 66048



REECE

COMMERCIAL REAL ESTATE

a Berkshire Hathaway Affiliate



Fields & Ivy Brewing Company



THE THOME TEAM



913.548.8700



JTHOME@REECECOMMERCIAL.COM

The information above has been obtained from sources believed reliable. While we do not doubt its accuracy we have not verified it and make no guarantee, warranty or representation about it. It is your responsibility to independently confirm its accuracy and completeness. Any projections, opinions, assumptions, or estimates used are for example only and do not represent the current or future performance of the property. You and your advisors should conduct a careful, independent investigation of the property to determine to your satisfaction the suitability of the property for your needs. © 2020