

# NEWMARK

## 19900 W 9 Mile

SOUTHFIELD, MI



### PROPERTY HIGHLIGHTS

- Approximately 60,000 square foot complex
- 2 story building located on 3.32 acres with great street visibility
- Interior completely demoed for buyer to build to spec
- Office Service District (O-S) Zoning permits multiple uses including office, medical, government, churches, schools, etc.
- Located within one mile of the M-10/Southfield Freeway entrance
- Potential redevelopment site
- Flexible Pricing/Terms

#### **Mike Valant**

*Managing Director*

† 248-885-1395

e [mike.valant@nmrk.com](mailto:mike.valant@nmrk.com)

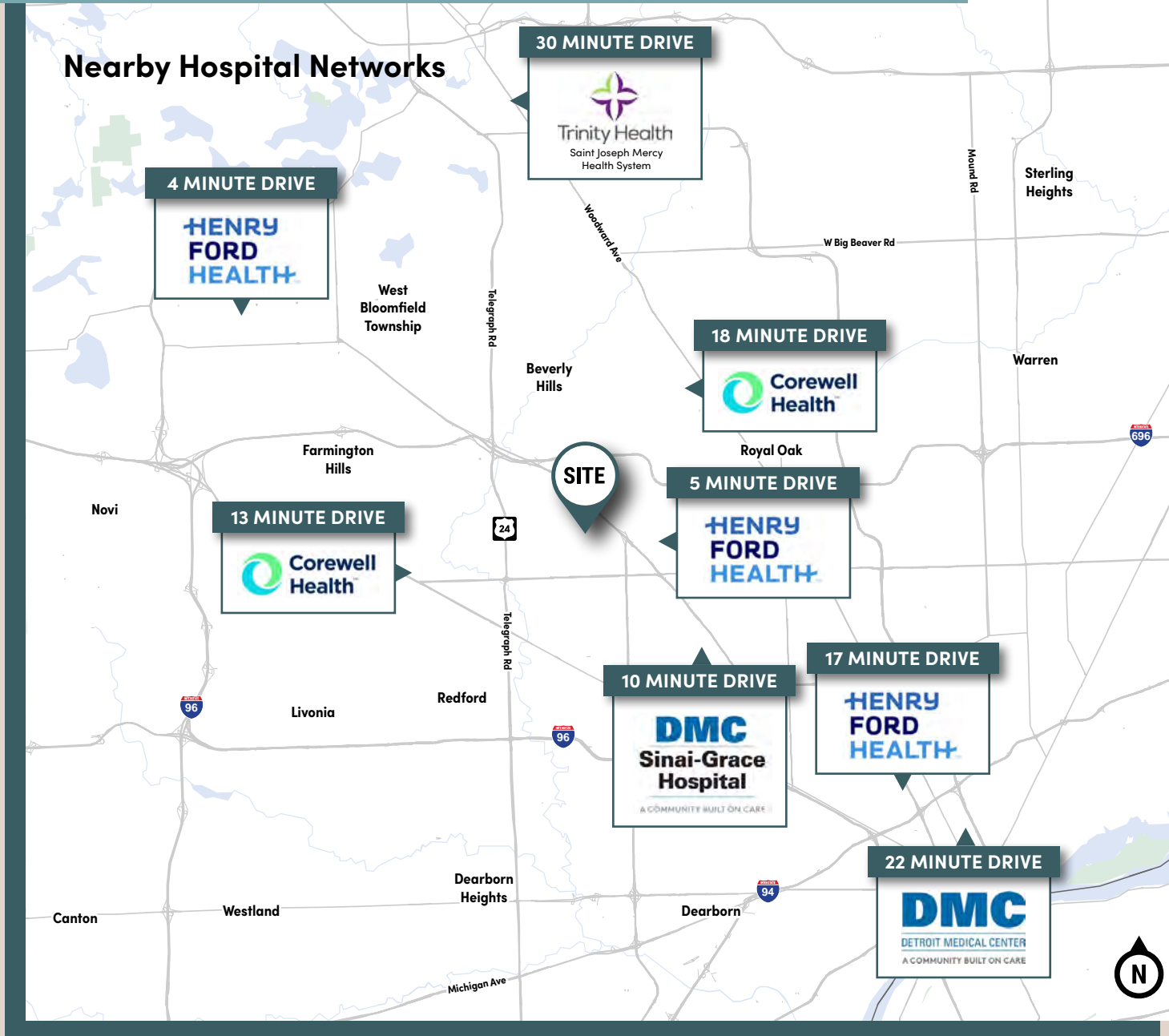
#### **J.P. Champine**

*Managing Director*

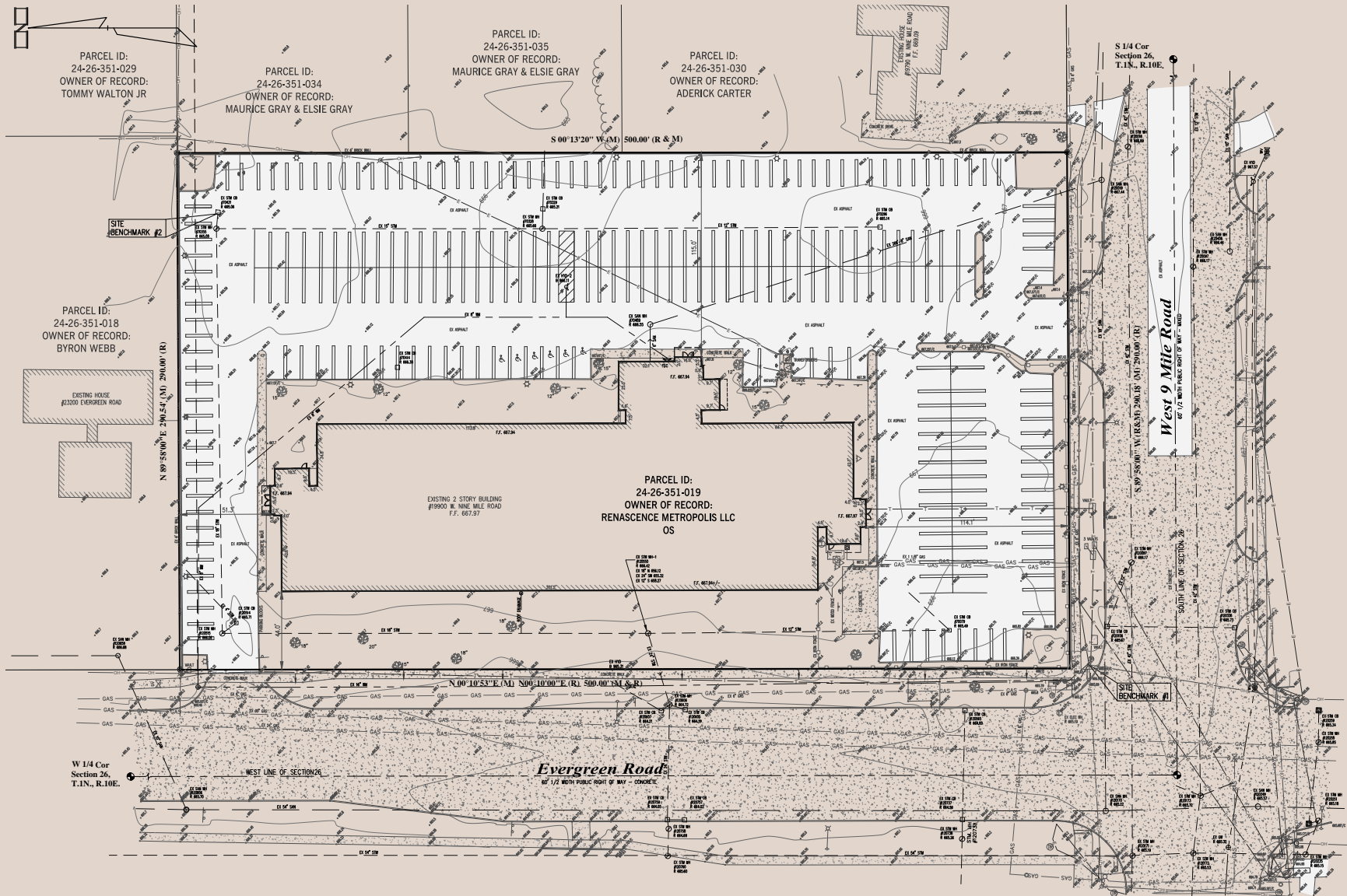
† 313-622-3634

e [jp.champine@nmrk.com](mailto:jp.champine@nmrk.com)

# Medical Conversion Opportunity



# Site Plan



# Building Plan

