

STATE TRIANGLE

109 S. STATE STREET SAN JACINTO, CA 92583

FOR LEASE

± 500 SF & 1,200 SF

RETAIL CENTER



JACKIE BEAUCHAMP

(951) 684-1251 | jbeauchamp@mcgre.com

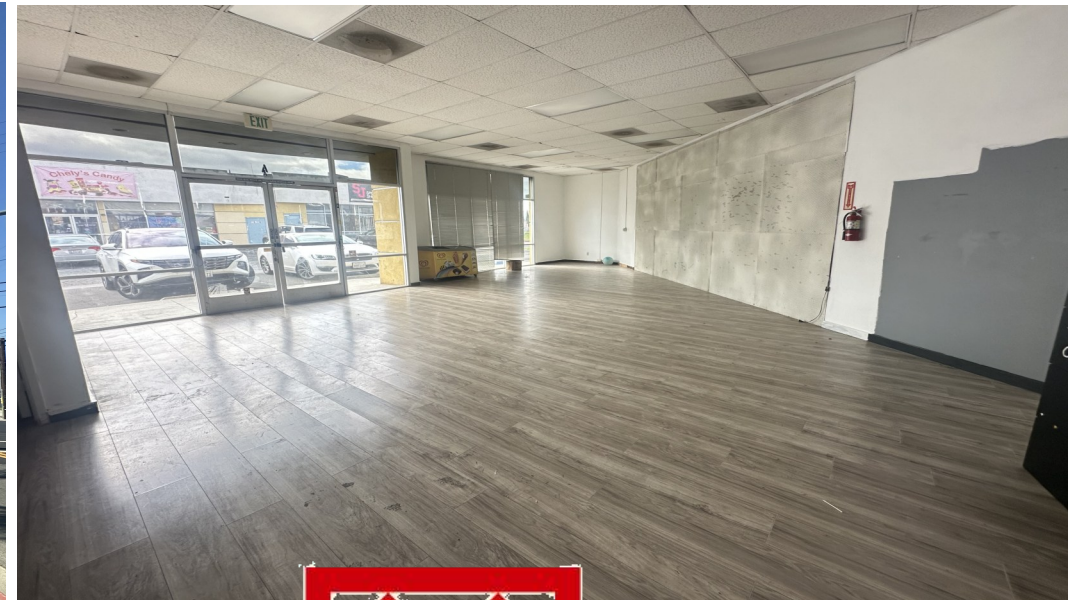
DRE License # #01461175 | #01899258



**MARTIN
COMMERCIAL
GROUP**

Commercial Real Estate Services

WWW.MCGRE.COM



JACKIE BEAUCHAMP

(951) 684-1251 | jbeauchamp@mcgre.com

DRE License # #01461175 | #01899258



**MARTIN
COMMERCIAL
GROUP**

Commercial Real Estate Services

WWW.MCGRE.COM

**109 SOUTH STATE STREET
SAN JACINTO, CA 92583**

**FOR LEASE
± 500 SF & 1,200 SF
RETAIL CENTER**



PROPERTY HIGHLIGHTS

- Neighborhood Retail Center
- Suites range from ±500 - ±1,200 SF
- Showroom/Private Office Floorplans
- Interior Private Restroom(s)
- CG Zone (Verify) [Article 2 - Zones, Allowable Land Uses, and Zone Specific Standards](#)
- 2:1 Parking Ratio

CALL AGENT TO SHOW!



**MARTIN
COMMERCIAL
GROUP**
Commercial Real Estate Services

The information contained herein has been obtained from sources we deem reliable. While we have no reason to doubt its accuracy, we do not guarantee it.

**CORPORATE OFFICE: 1495 E. WARNER AVENUE ~ SANTA ANA, CA 92705
Orange County 714-241-1141
Inland Empire: 951-684-1251**

**109 SOUTH STATE STREET
SAN JACINTO, CA 92583**

**FOR LEASE
± 500 SF & 1,200 SF
RETAIL CENTER**

AVAILABLE SUITES

SUITE	SQ. FT.	BASE RENT	CAM / NNN	DESCRIPTION	AVAIL. DATE
109 S. State Street, Suite D	500 +/-	\$795.00 (1.59MG)	(Water/Trash Included) No additional CAM or NNN fees	1 Open Space with Restroom. Unit is built out in terms of t-bar ceiling, ducting, floors, etc.	Immediately
109 S. State Street, Suite A	1200 +/-	\$2,000.00 (1.66MG)	(Water/Trash Included) No additional CAM or NNN fees	Showroom with 1 Private Office and Restroom. Unit is built out in terms of t-bar ceiling, ducting, floors, etc.	Immediately

The information contained herein has been obtained from sources we deem reliable. While we have no reason to doubt its accuracy, we do not guarantee it.

CORPORATE OFFICE: 1495 E. WARNER AVENUE ~ SANTA ANA, CA 92705
Orange County 714-241-1141
Inland Empire: 951-684-1251