

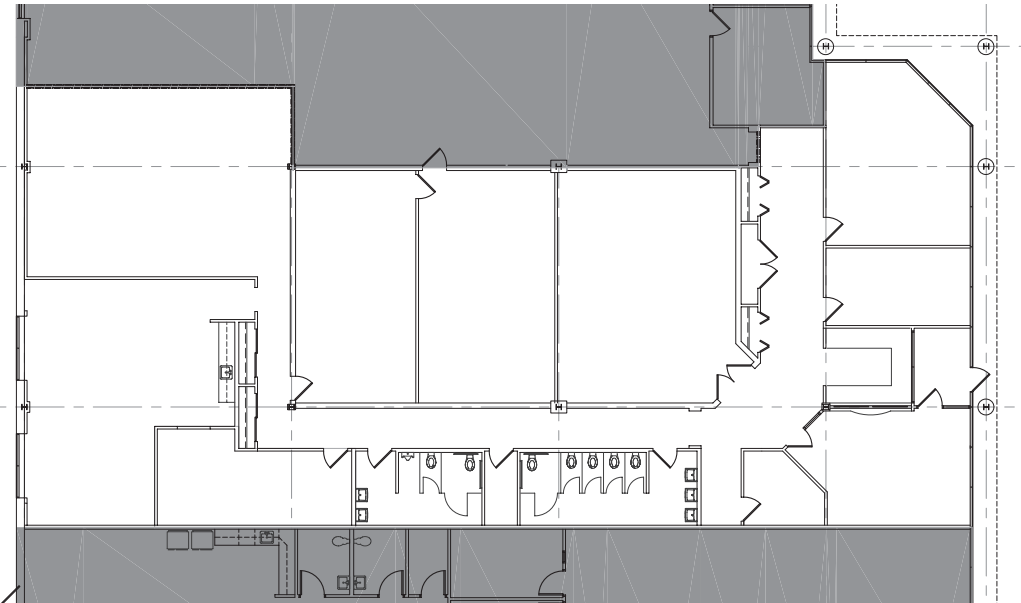
10 STOW ROAD

**SUBLEASE  
AVAILABLE**

Marlton  
New Jersey

**STOW ROAD  
CORPORATE PARK**

MARLTON, NJ



- Office suite available for sublease with some furniture available
- 6,000 RSF with construction allowance included
- Custom build-out available including built-in reception desk, conference room with built-in screen and kitchen
- Available until June 2026

**For further information, please contact our exclusive agents:**

Anne Klein Executive Managing Director t 856-334-2110 [anne.klein@nmrk.com](mailto:anne.klein@nmrk.com)

40 Lake Center Executive Park | 401 Route 73 North | Suite 120 | Marlton, NJ 08053 | t 856-334-2100 | [nmrk.com](http://nmrk.com)

**NEWMARK**

The information contained herein has been obtained from sources deemed reliable but has not been verified and no guarantee, warranty or representation, either express or implied, is made with respect to such information. Terms of sale or lease and availability are subject to change or withdrawal without notice.