

FOR LEASE | OLD PORT OFFICE

One Union Wharf | Portland, ME



OLD PORT OFFICE SPACE

2,300± SF full third floor walk-up

Perfectly configured for a small office user

Highly visible location in the heart of the Old Port between Sapporo's and Liquid Riot

Nice views of Commercial Street and the working waterfront

LEASE RATE: \$20.00/SF MG



PETER HARRINGTON

207.772.0088 D

207.318.8888 C

peter@malonecb.com

MALONE COMMERCIAL BROKERS

5 Moulton Street • Suite 3

Portland, ME 04101

207.772.2422 • malonecb.com

PROPERTY SUMMARY

One Union Wharf | Portland, ME



OWNER: Proprietors of Union Wharf

DEED: Book 15328 Page 286

ASSESSOR: Map 32 Lot 12

BUILDING SIZE: 14,840± SF

SPACE SIZE: 2,300± SF

CONFIGURATION: Three private offices, one conference room, two office spaces (in dormers) break room, kitchenette, two bathrooms, open cubicle area, two egresses

YEAR BUILT: Pre 1900

CONSTRUCTION: Brick masonry

FOUNDATION: Full

SIDING: Brick veneer

ROOF: Pitched shingle

FLOORING: Carpet

CEILING HEIGHT: 8' - 11'

ELECTRICITY: Circuit breakers

HVAC: Heat pump heat and A/C

UTILITIES: Municipal

RESTROOM: Two

SPRINKLER: Yes

SIGNAGE: On building

PARKING: Negotiable under separate agreement at market rates

ZONING: WCZ - Waterfront Commercial Zone
DEOZ - Downtown Entertainment Overlay

PROPERTY TAXES: \$35,564.29

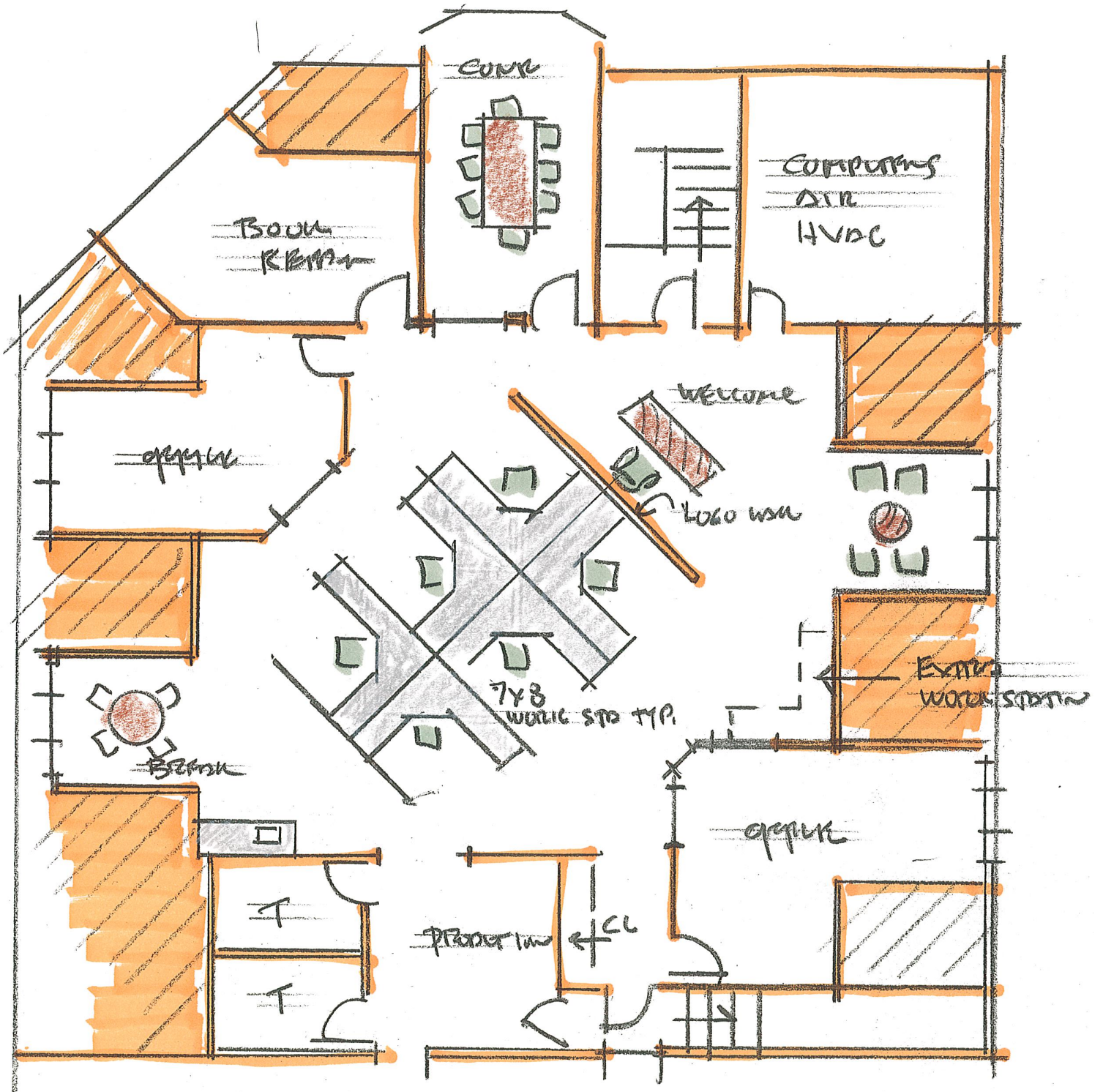


FLOOR PLAN

One Union Wharf | Portland, ME



COMMERCIAL STREET



FOR LEASE | OLD PORT OFFICE

One Union Wharf | Portland, ME



This document has been prepared by Malone Commercial Brokers for advertising and general information only. Malone Commercial Brokers makes no guarantees, representations or warranties of any kind, expressed or implied, regarding, but not limited to, warranties of content, accuracy, and reliability. Any interested party should undertake their own inquiries as to the accuracy of the information. Malone Commercial Brokers excludes unequivocally all informed or implied terms, conditions and warranties arising out of this document and excludes all liability for loss and damages there from. All data is subject to change of price, error, omissions, other conditions or withdrawal without notice. Malone Commercial Brokers is acting as the Seller's/Lessor's agent in the marketing of this property.



PETER HARRINGTON

207.772.0088 D

207.318.8888 C

peter@malonecb.com

MALONE COMMERCIAL BROKERS

5 Moulton Street • Suite 3

Portland, ME 04101

207.772.2422 • malonecb.com