

45
YEARS OF



TRANSWESTERN

REAL ESTATE
SERVICES



**FOR
LEASE**

**GENERAL
OFFICE/
MEDICAL**

**10,895 SF
AVAILABLE
TOTAL**

4247 E 14 MILE ROAD

STERLING HEIGHTS, MI 48310
MACOMB WEST SUBMARKET

AVAILABILITY

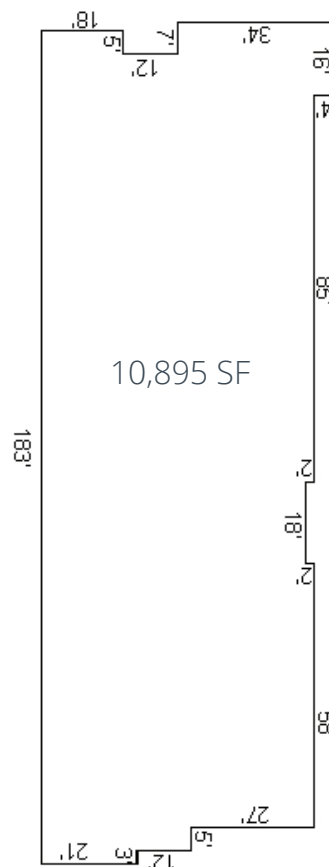
- UP TO 10,895 SQUARE FEET AVAILABLE
- SUITE A (6,100 SQUARE FEET)
- SUITE B (4,795 SQUARE FEET)
- MONUMENT SIGNAGE

PROPERTY

- YEAR BUILT 1983
- ZONING O-1 OFFICE
- NICELY LANDSCAPED
- NEW ASPHALT PARKING LOT WITH AMPLE PARKING

LOCATION

- 14 MILE & RYAN
- EASY ACCESS TO MAJOR TRANSPORTATION ROUTES INCLUDING M-53, M-59, I-696 & I-75
- CLOSE PROXIMITY TO AMENITIES
- STRONG DEMOGRAPHICS



Leasing Information:

**Charles
Howard**

248.821.7722

charles.howard@transwestern.com

**Bill
Harvey**

248.797.9455

bill.harvey@transwestern.com

**4247
14 MILE**

**SUITE A
6,100
square feet**

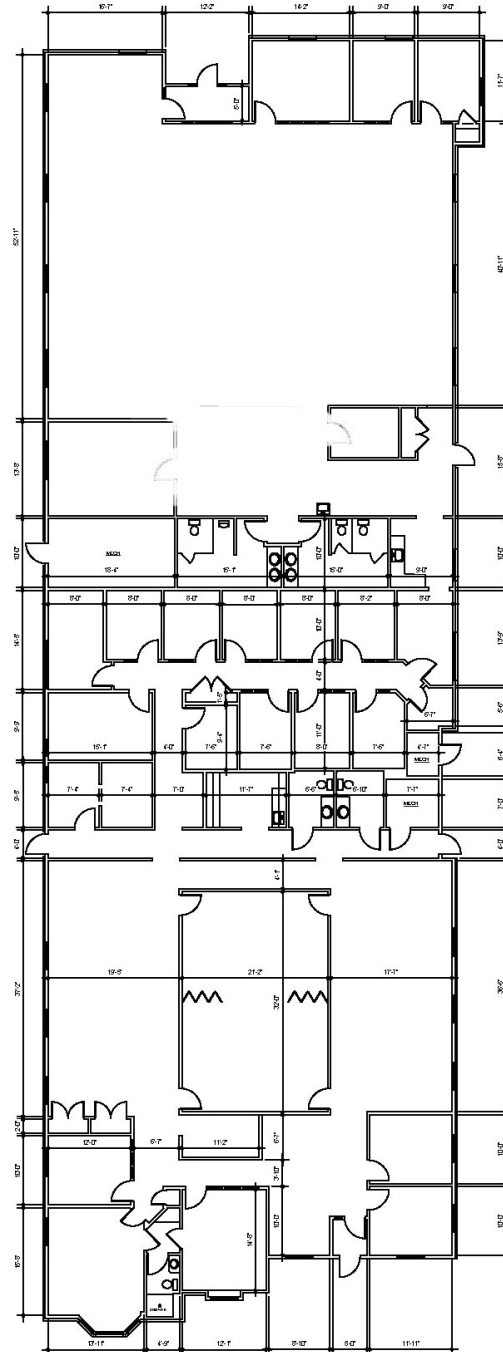
**SUITE B
4,795
square feet**

**10,895 total
square feet**

4247 14 MILE

STERLING HEIGHTS, MI 48314

FLOOR PLAN



**10,895 SF
TOTAL**



TRANSWESTERN

REAL ESTATE
SERVICES

Leasing Information:

**Charles
Howard**

248.821.7722

charles.howard@transwestern.com

**Bill
Harvey**

248.797.9455

bill.harvey@transwestern.com