



NEWLY CONSTRUCTED INDUSTRIAL BUILDINGS

1900 & 1906 BATTERY DANTZLER RD | CHESTER, VA 23836

FEATURES

- **JOIN BAPS INC. - ONLY TWO BUILDINGS LEFT!**
- Near I-95 Exit (125,000 VPD)
- 2 newly constructed industrial buildings
- Offers 5,000 SF of functional industrial/storage space
- Modern design and amenities
- High ceilings at 22 ft for maximum storage
- Large loading area for easy access with 5 bay doors with a 14 ft clearance
- 3 phase electrical power
- Well-lit interior and flexible layout for various uses - Outdoor storage and laydown yard is available

Space Type	2 Industrial Buildings For Lease
Available Space	5,000 SF Each
Lease Rate	\$16.00 SF/yr (NNN)

DEMOGRAPHICS	1 MILE	3 MILES	5 MILES
Total Population	1,785	31,523	73,011
Average HH Income	\$80,108	\$106,038	\$105,307



Robert Marshall: Commercial Sales and Leasing
 O: 804.864.9788 x102
 M: 804.437.4323
 robertmarshall@taylorlongproperties.com



Taylor Long
PROPERTIES
 Commercial Real Estate

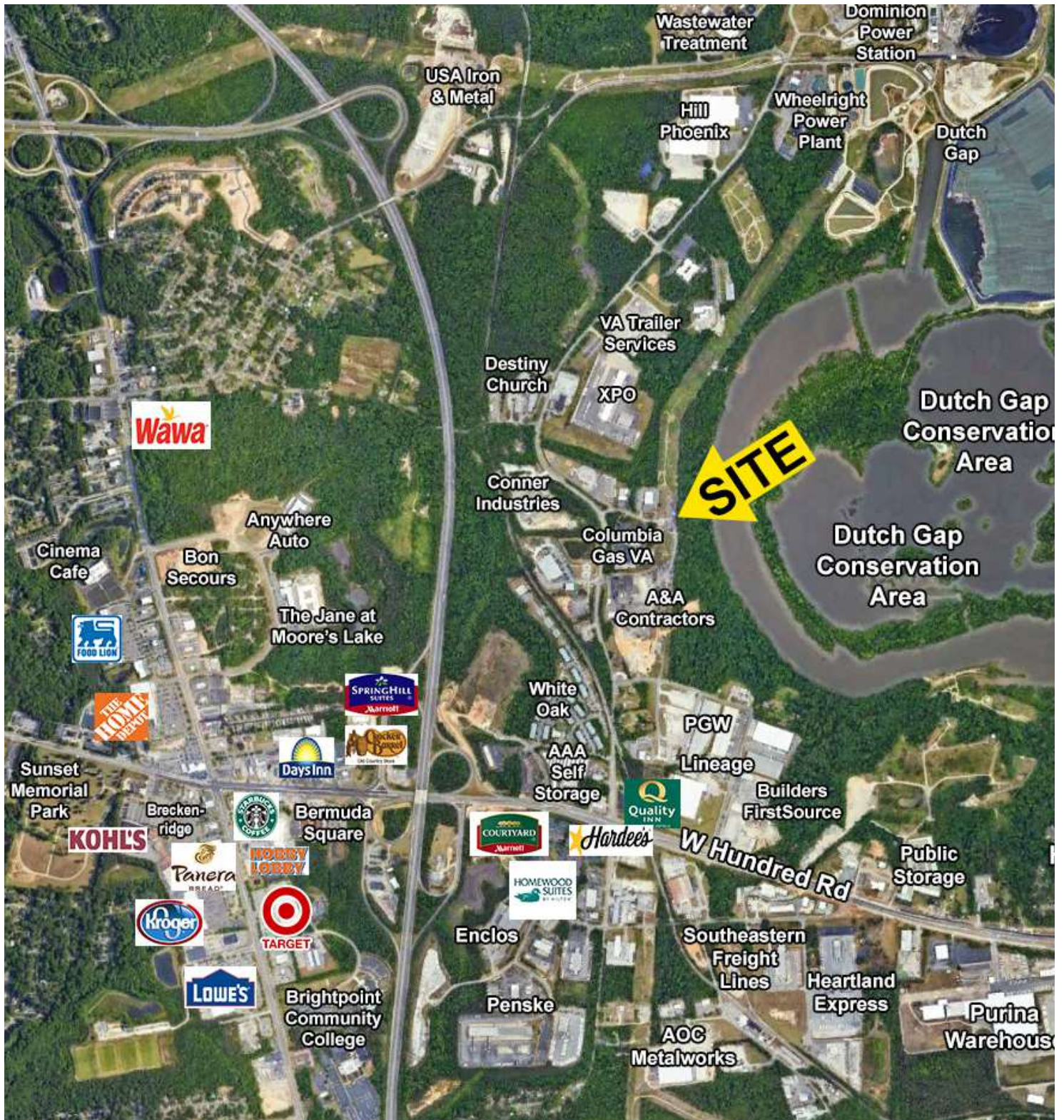


NEWLY CONSTRUCTED INDUSTRIAL BUILDINGS





RETAILER MAP / AERIAL





NEARBY INDUSTRIAL USERS MAP

