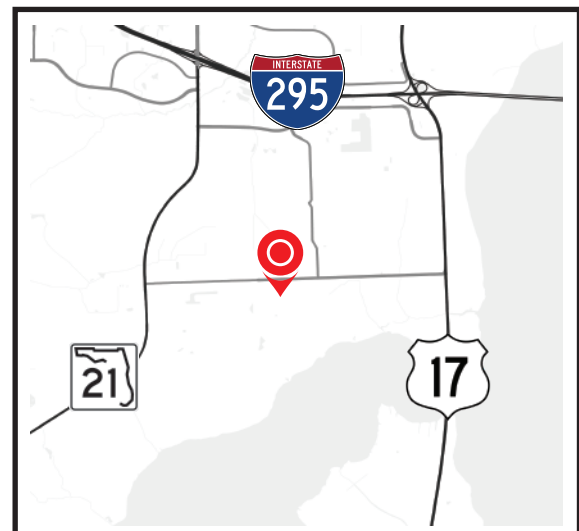


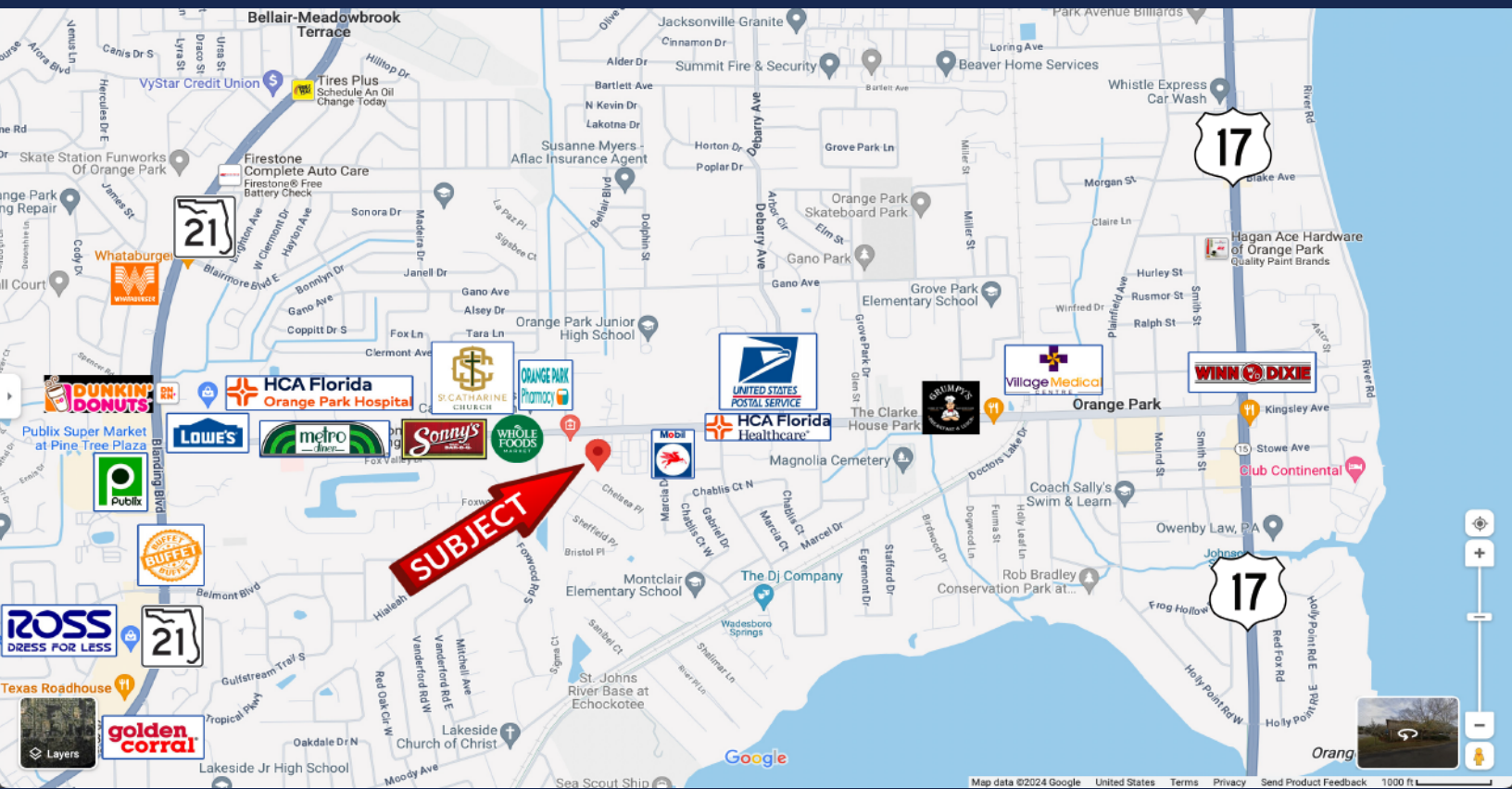


1560 Kingsley Ave | Orange Park, FL 32073

Medical & General Office Space

- Located 1.5 mile west of US 17 on Kingsley Ave
- Suited for medical or general office users
- Traffic Count: 26,500 ± AADT on Kingsley Ave
- Available SF: 5247± SF. Two suites
- Located in a densely populated area





Demographic Information

HOUSEHOLDS

	1 Mile	3 Mile	5 Mile
2010 Census	8,705	50,671	116,656
2023 Estimate	9,043	54,099	124,506
2028 Projection	9,126	55,085	127,061

INCOME

	1 Mile	3 Mile	5 Mile
Average Household Income	\$84,316	\$85,199	\$91,025
Median Household Income	\$75,916	\$71,036	\$72,876

Property Address

1560 Kingsley Ave
Orange Park, FL 32073





Listing Agents



Mert Kerimoglu

Senior Advisor
Healthcare Brokerage – Development
Mobile: (617) 899-3046
Mert.Kerimoglu@crossregions.com



Turul Sengul

Senior Advisor
Mobile: (954) 980-5988
TS@crossregions.com



Taylor Rice

Sales Associate
Mobile: (516) 816-9745
Taylor.Rice@crossregions.com