

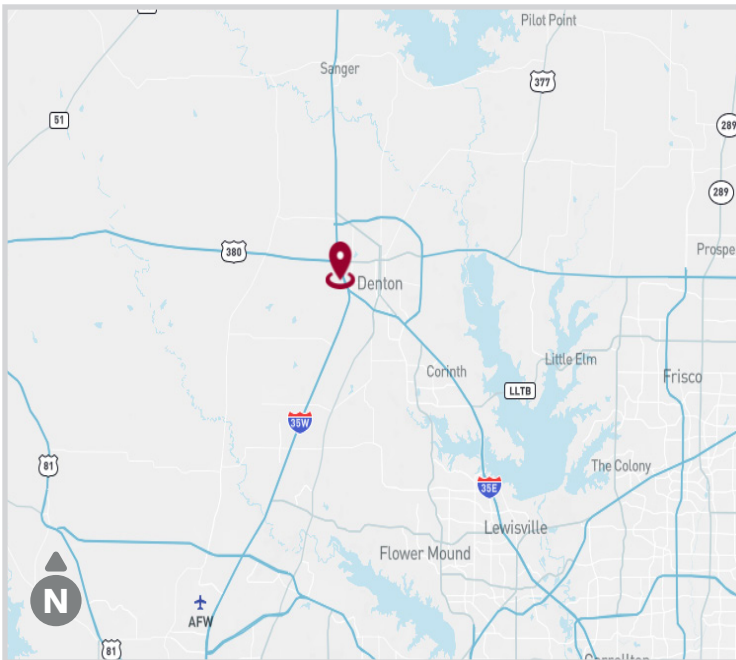
FOR LEASE

78,133 SF DIVISIBLE TO 22,069 SF



HIGH STREET GOLDEN POINT

3451 N Interstate 35 | Denton, TX 76207



AVAILABILITY HIGHLIGHTS

- 78,133 SF with I-35 Frontage
- Divisible to $\pm 22,069$ SF
- 1,902 SF Spec Office (Located at South Endcap)
- Clear Height 32'
- 24 Dock High Doors
- 12 (30,000 lbs) Pit Levelers
- 1 Oversized Ramp Door
- Heavy Car Parks
- ESFR Sprinkler System
- LED Lighting (30 FC at 36" with 15' Whips)
- White-boxed Warehouse

FOR LEASING INFORMATION:

Adam Graham, SIOR, CCIM
agraham@lee-associates.com
972.934.4011

Corbin Blount, SIOR
cblount@lee-associates.com
972.934.4035

Chris Beggins
cbeggins@lee-associates.com
972.934.4032

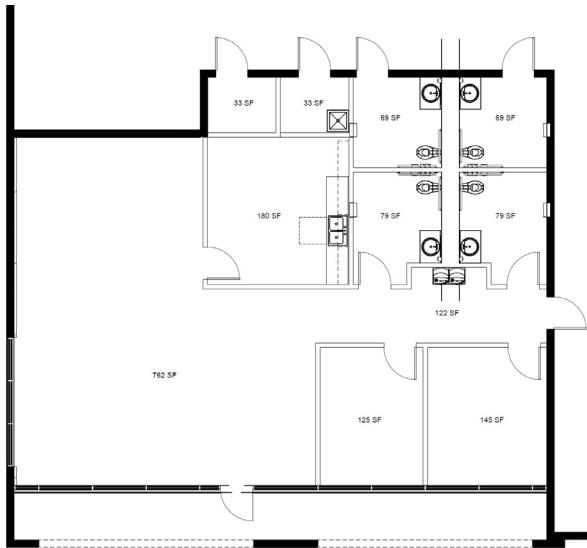
OWNED BY:



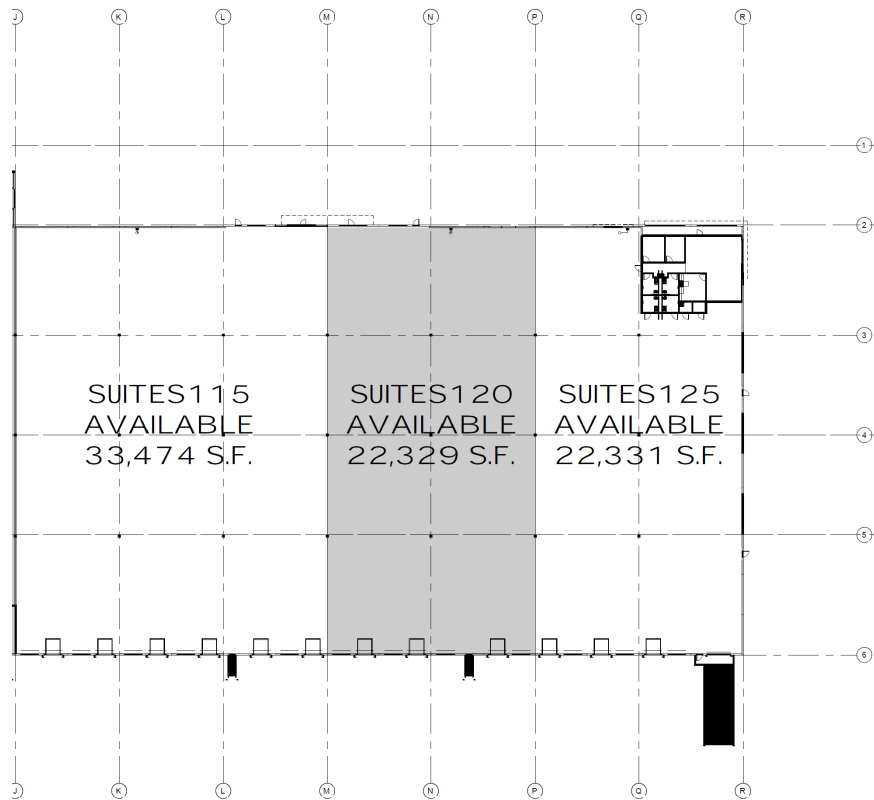
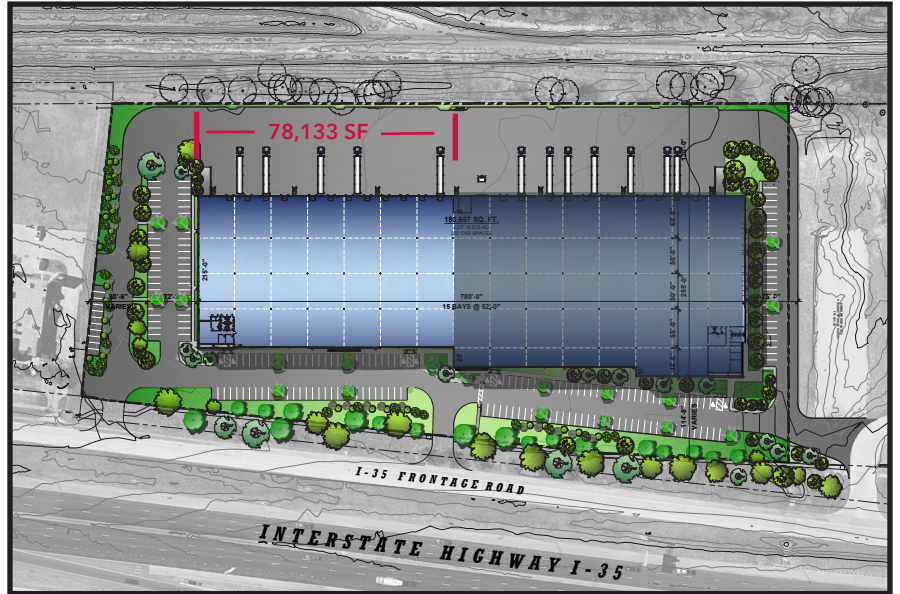
LEASING:



OFFICE & SITE PLANS



1,902 SF OFFICE



All information furnished regarding property for sale, rental or financing is from sources deemed reliable, but no warranty or representation is made to the accuracy thereof and same is submitted to errors, omissions, change of price, rental or other conditions prior to sale, lease or financing or withdrawal without notice. No liability of any kind is to be imposed on the broker herein.

FOR LEASING INFORMATION:

Adam Graham, SIOR, CCIM
 agraham@lee-associates.com
 972.934.4011

Corbin Blount, SIOR
 cblount@lee-associates.com
 972.934.4035

Chris Beggins
 cbeggins@lee-associates.com
 972.934.4032

OWNED BY:



LEASING:

