



# 4410 Arapahoe Avenue

Suite 110, Boulder, CO

**Michael-Ryan McCarty**

mccarty@gibbonswhite.com  
(303) 586-5939

**Angela Topel**

angela@gibbonswhite.com  
(303) 586-5921

**Patrick Weeks**

patrick@gibbonswhite.com  
(303) 586-5935

www.gibbonswhite.com

**Property Info & Gallery**

**View Map**

## Convenient Medical & Professional Office For Lease

Available Space	200 - 1,730 sq. ft.
Lease Rate / Month Gross	\$950 - \$1,150
Lease Rate / sq. ft.	\$25.00 NNN
Expenses / sq. ft.	\$19.00*

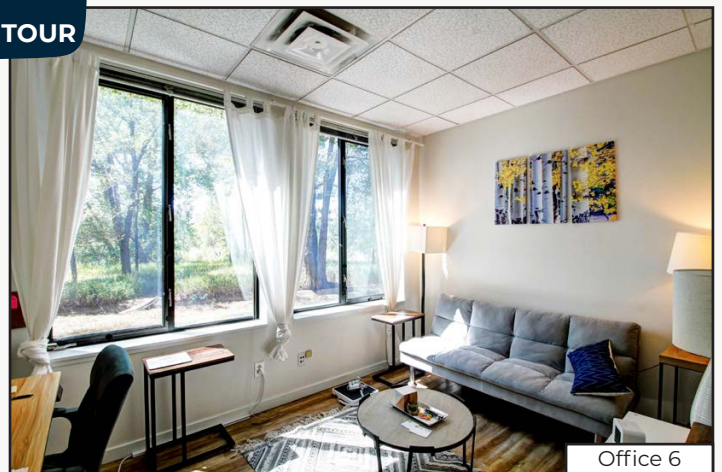
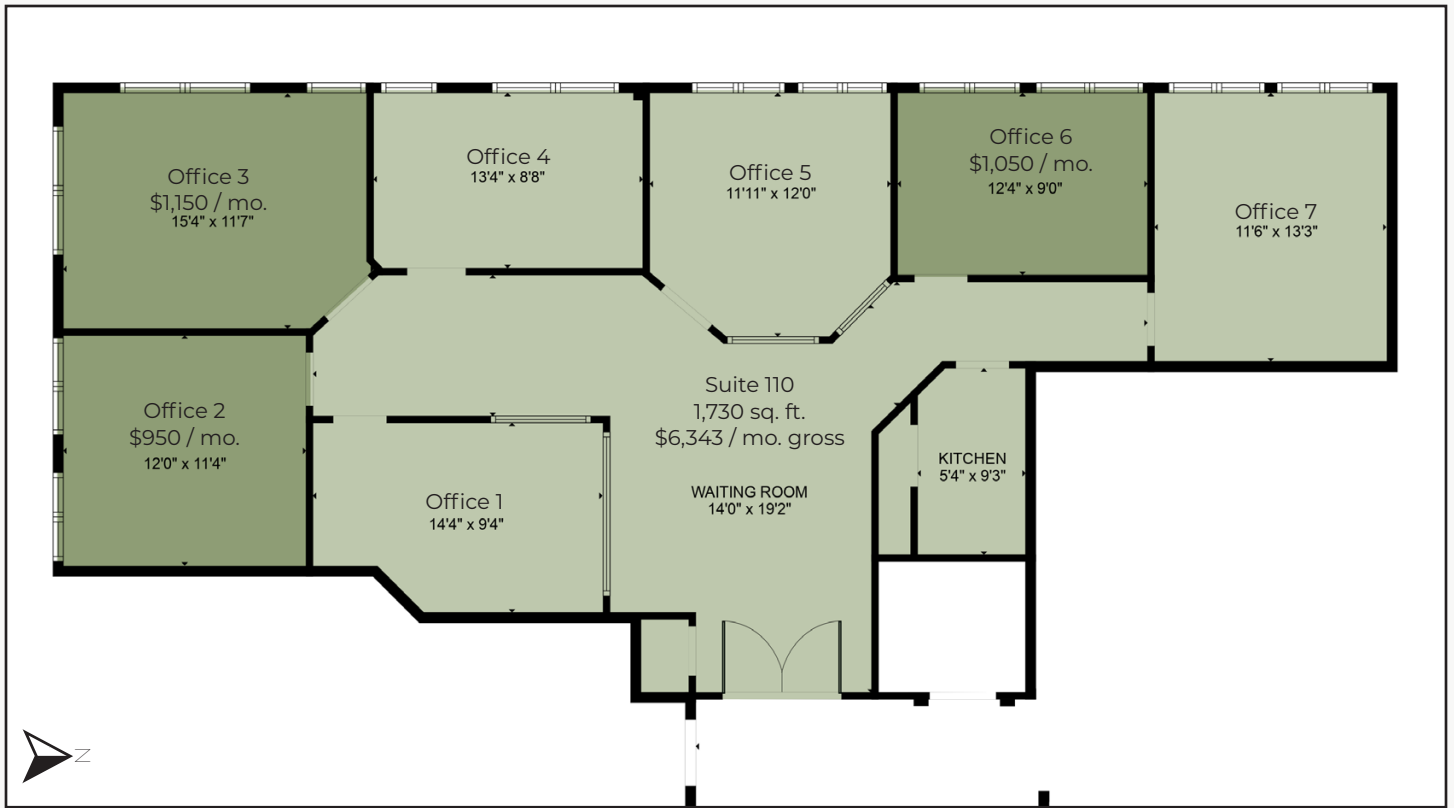
\*Including Utilities & Janitorial

- Individual Offices or Full Suite Available with Luscious Views of the Greenbelt & Foothills
- 7 Individual Offices with High Ceilings, Large Reception / Waiting Area, Kitchenette & Welcoming Building Lobby
- See Floorplan for Individual Office Availability with Internet Included
- Located at Foothills Pkwy & Arapahoe Ave, across from Boulder Community Hospital
- Sublease through October 2026 with Longer Direct Term Available

The information included has been obtained from sources believed reliable. While we do not doubt the accuracy of the information, it has not been verified and no guarantee, warranty, or representation is being made.



2305 Canyon Blvd, Suite 200, Boulder, CO 80302 - (303) 442-1040



The information included has been obtained from sources believed reliable. While we do not doubt the accuracy of the information, it has not been verified and no guarantee, warranty, or representation is being made.