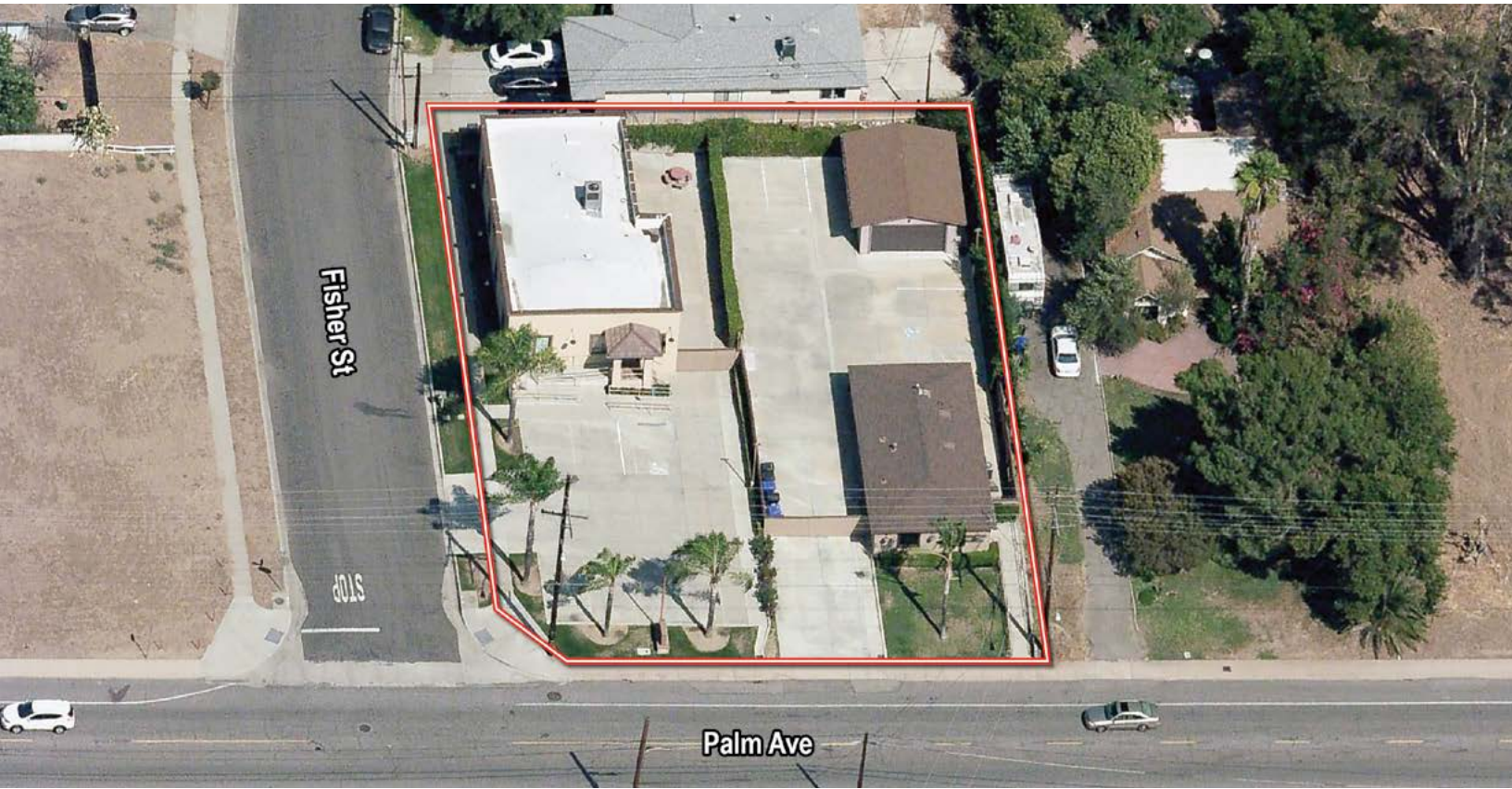


±3,562 SF AVAILABLE

FOR SALE | 7035 & 7045 PALM AVE, HIGHLAND, CA



PROPERTY FEATURES

- 7035: ±1,886 SF Building
- 7045: ±1,176 SF & ±500 SF Buildings
- Medical Office
- Partially Fenced
- Plumbing for Medical
- APN: 1200-361-03 & 1200-361-04
- Great Access to 210 and 10 Freeways
- Must be Sold Together
- Owner/User/Investment Opportunity



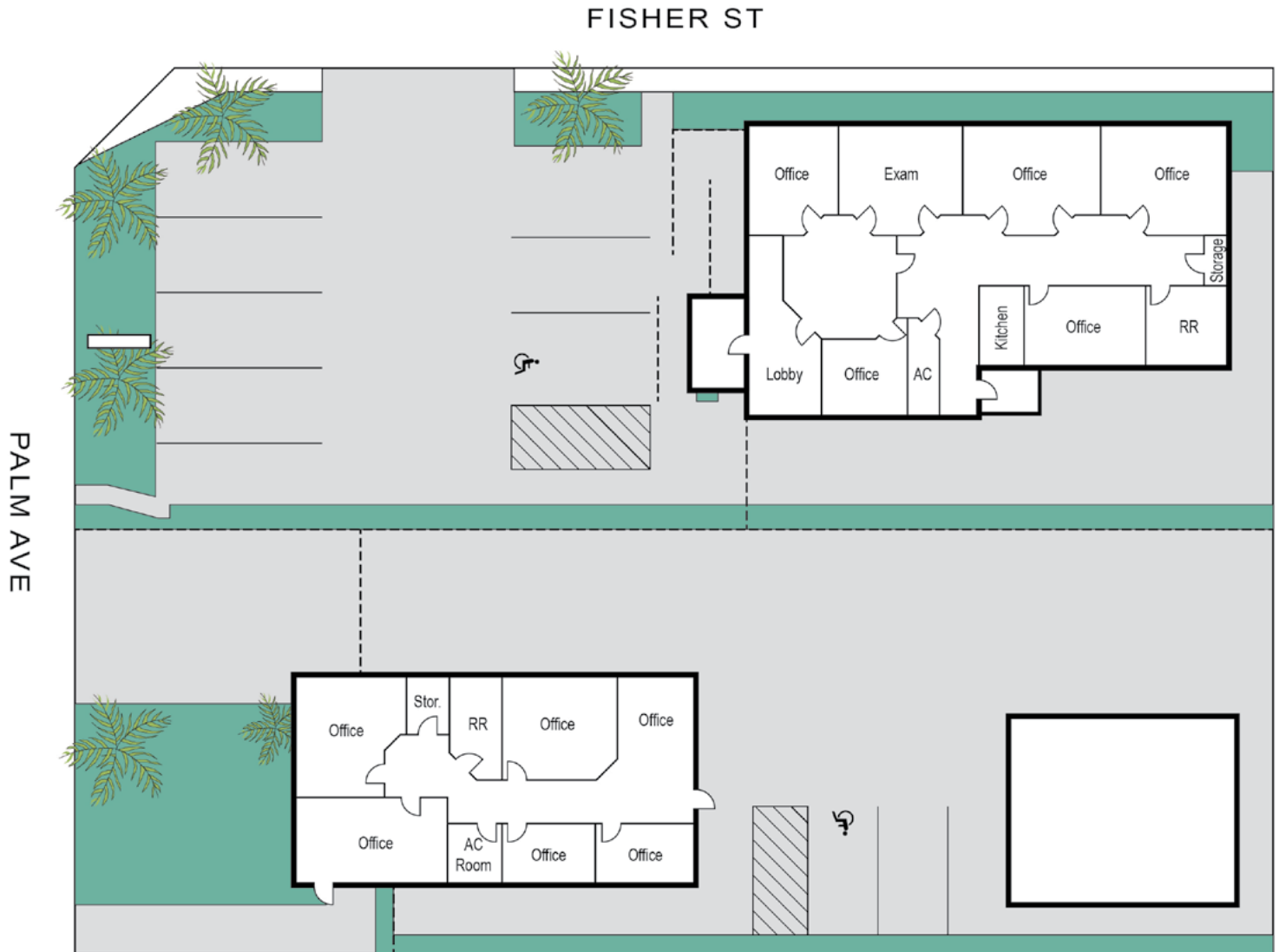
CHRISTIAN EMERSON
Senior Associate
909.545.8018
cemerson@voitco.com
Lic. #02104669

DANTE BORRUSO
Vice President, Partner
909.775.4475
dborruso@voitco.com
Lic. #02086368

Voit
REAL ESTATE SERVICES
www.VoitCo.com

±3,562 SF AVAILABLE

FOR SALE | 7035 & 7045 PALM AVE, HIGHLAND, CA



CHRISTIAN EMERSON
Senior Associate
909.545.8018
cemerson@voitco.com
Lic. #02104669

DANTE BORRUSO
Vice President, Partner
909.775.4475
dborruso@voitco.com
Lic. #02086368

Voit
REAL ESTATE SERVICES
www.VoitCo.com

±3,562 SF AVAILABLE

FOR SALE | 7035 & 7045 PALM AVE, HIGHLAND, CA

7035 Palm Ave. Property Photos



CHRISTIAN EMERSON
Senior Associate
909.545.8018
cemerson@voitco.com
Lic. #02104669

DANTE BORRUSO
Vice President, Partner
909.775.4475
dborruso@voitco.com
Lic. #02086368

Voit
REAL ESTATE SERVICES
www.VoitCo.com

±3,562 SF AVAILABLE

FOR SALE | 7035 & 7045 PALM AVE, HIGHLAND, CA

7045 Palm Ave. Property Photos



CHRISTIAN EMERSON
Senior Associate
909.545.8018
cemerson@voitco.com
Lic. #02104669

DANTE BORRUSO
Vice President, Partner
909.775.4475
dborruso@voitco.com
Lic. #02086368

Voit
REAL ESTATE SERVICES
www.VoitCo.com