



FLEX SPACE FOR LEASE
3600 S MACARTHUR, SUITE A, OKLAHOMA CITY, OK

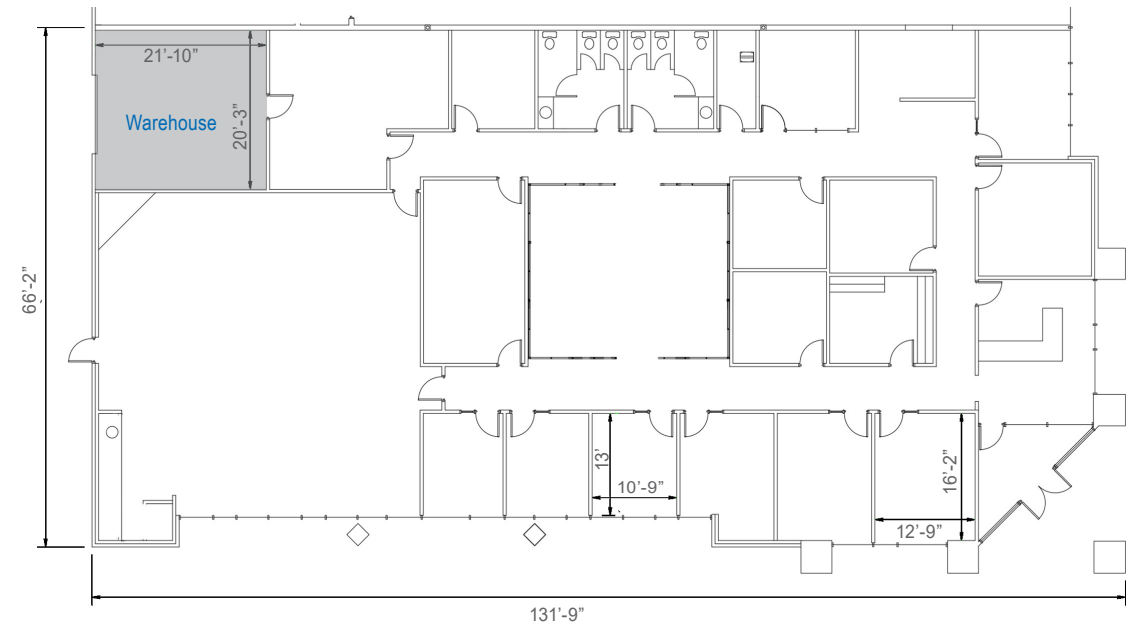
BRETT PRICE, CCIM, SIOR
bprice@newmarkrp.com
C: 405.613.8380

KRIS DAVIS, SIOR
kgdavis@newmarkrp.com
C: 405.202.9525

KARLEY HARPER
kharper@newmarkrp.com
C: 405.371.3498

NEWMARK
ROBINSON PARK

FLEX SPACE / FOR LEASE



DETAILS

Available SF	8,659 SF
Lease Rate	\$14.00/SF/YR (NNN)
Building Size	44,750 SF
Zoning	I-3
Year Built	2001
Lot Size	4.11 Acres
Cross Streets	SW 36th & MacArthur

HIGHLIGHTS

8,209 SF office space, 450 SF warehouse space

15 offices

Break room

19' clear height, 1 grade level door

T-8 & HPS lighting

PROPERTY OVERVIEW

Airport Business Center is a 44,750 square foot flex building with frontage along S MacArthur Blvd. and less than 1/2 mile from Hwy 152. The property is located approximately 2 miles from Will Rogers World Airport and Mike Maroney Aeronautical Center.