

# 2900 LAFAYETTE

NEWPORT BEACH

NOW LEASING

RETAIL / RESTAURANT SPACE

LEASED BY:

**RW** REDWOOD  
WEST



WELCOME TO

# 2900 LAFAYETTE

2900 Lafayette is a mixed use building located in the heart of Cannery Village on the Balboa Peninsula. The property has vaulted ceilings, ample parking and bay views. It is close to Southern California's most distinguished neighborhoods, restaurants and beaches creating an irreplaceable coastal destination where patrons can truly live, work and play.

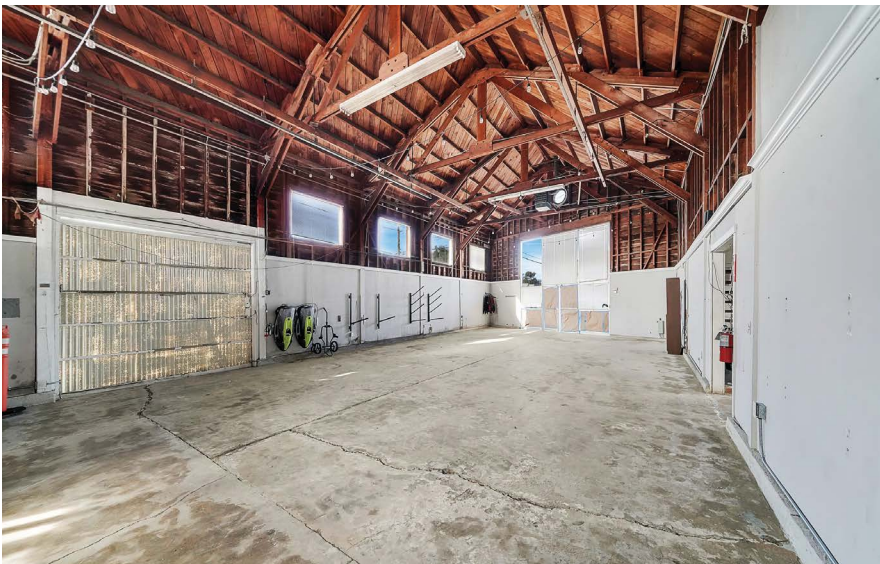






# The *Features* & Amenities

- Waterfront property
- Retail restaurant focused, first generation restaurant, needs full build out
- Walking distance to local restaurants & retail amenities
- Ample secured parking
- Convenient access to 55, 73, 405 and Pacific Coast Hwy
- Boat slips available







LIDO HOUSE HOTEL

LIDO MARINA VILLAGE

LIDO VILLAS

LIDO ISLE

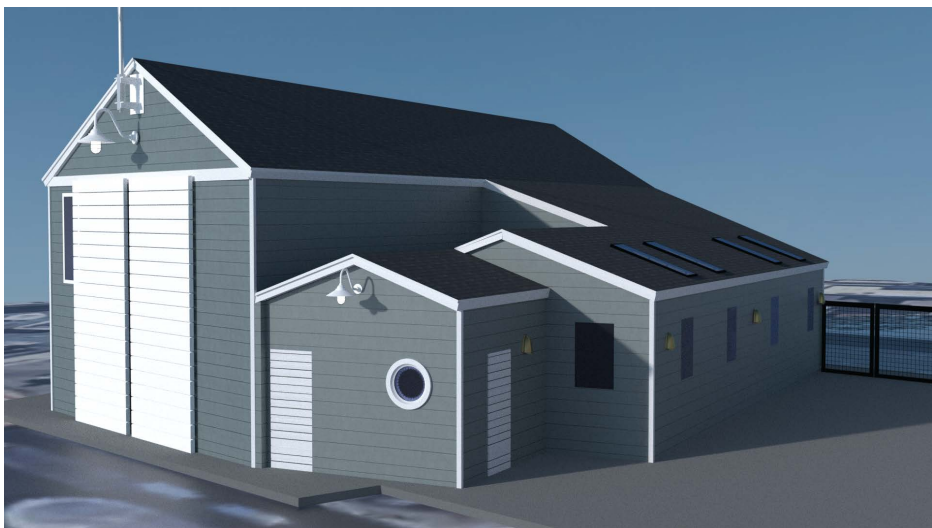
THE CANNERY

2900 LAFAYETTE

BUDDHA'S FAVORITE

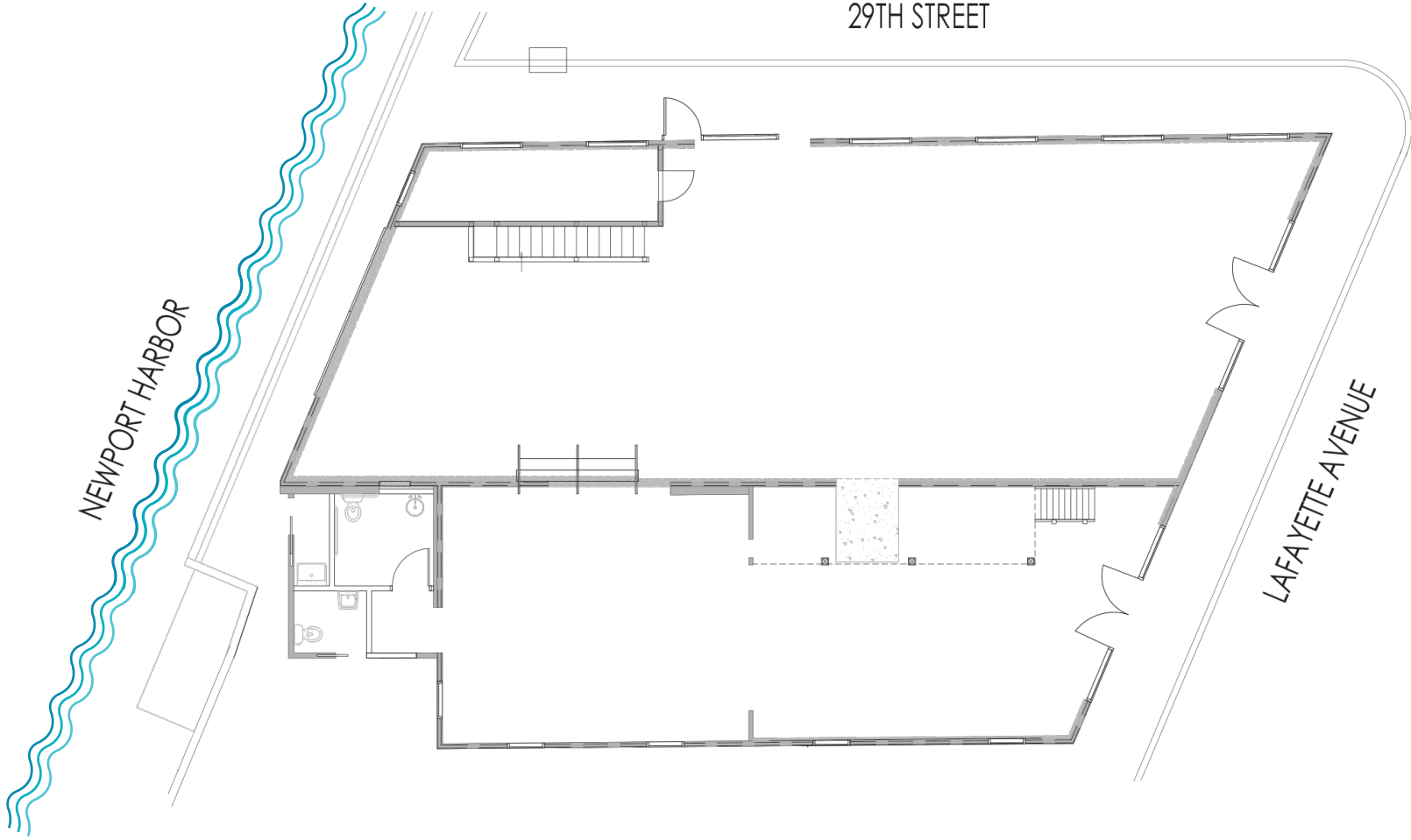
BLUEWATER GRILL





# Available Space

+/- 3,500 SF





# 2900 LAFAYETTE

NEWPORT BEACH

*For more information, please contact:*

**John Pomer**

949.945.2649

john@redwoodwest.com

Lic. #01440689

**Ben Gott**

949.945.2648

ben@redwoodwest.com

Lic. #01724507

**Christian Heffelman**

949.945.2645

christian@redwoodwest.com

Lic. #02101426

**Julie Johnson**

949.945.2644

julie@redwoodwest.com

Lic. #02156626

LEASED BY:

**RW** | REDWOOD  
WEST

The information contained in this document has been obtained from sources believed reliable. While Redwood West does not doubt its accuracy, Redwood West has not verified it and makes no guarantee, warranty or representation about it. It is your responsibility to independently confirm its accuracy and completeness. You and your advisors should conduct a careful, independent investigation of the property to determine your satisfaction to the suitability of the property for your needs.