

INDUSTRIAL SPACE FOR LEASE

# 4570 NW 128TH STREET

OPA LOCKA, FL 33054

Available

**±39,515 SF**



**Free Standing Warehouse located in the Central Dade submarket**

## Building Specifications

Building Size	±39,515 SF
Lot Size	2 acres
Warehouse	±36,156 SF
Office	±3,359 SF
Storage Mezzanine	±3,500 SF
Loading	2 docks & 2 drive-ins
Clear Height	20'
Parking	17 spaces
Available	July 2024
Asking	\$14.75 NNN

## Location

**SR 924**

Direct frontage on Gratigny Expressway

**826**

Less than 10 minutes from Palmetto Expressway

**I-95**

Less than 15 minutes from I-95 & the Golden Glades interchange

# 4570 NW 128TH STREET

OPA LOCKA, FL 33054

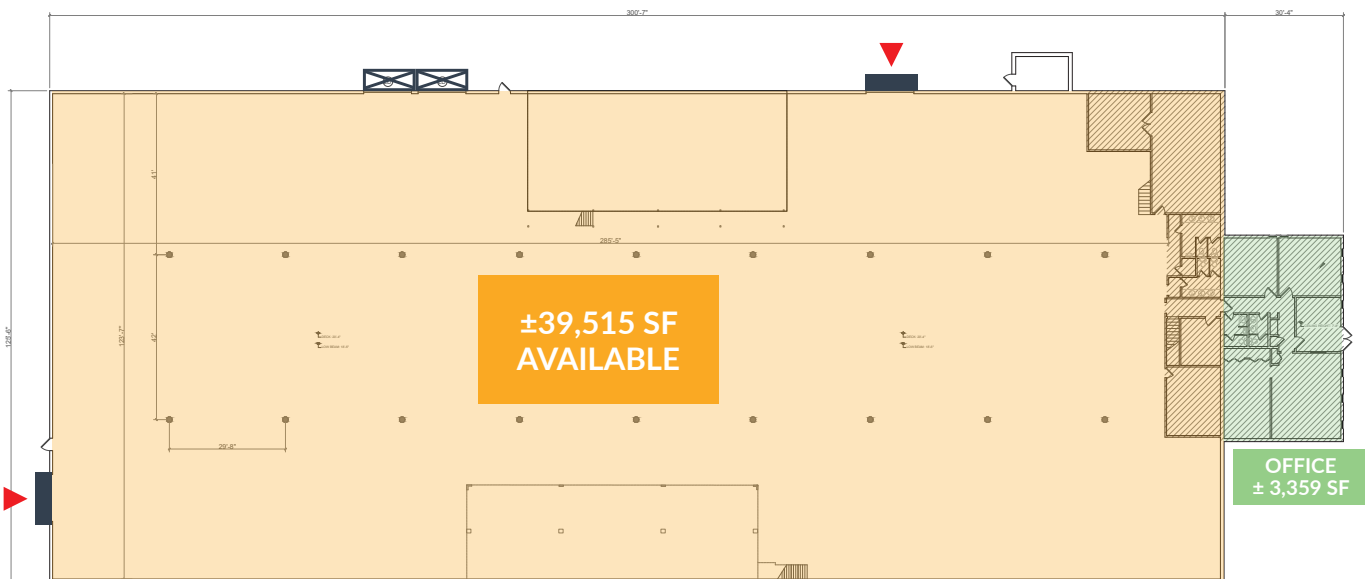


## Overview

On behalf of the Owner, Cushman & Wakefield of Florida, LLC, is pleased to offer for lease this Free Standing Industrial Warehouse located at 4570 NW 128th Street, Opa Locka, FL 33054, a  $\pm 39,515$  SF warehouse situated on  $\pm 2.00$  acres, located in Miami-Dade County. The Property is strategically located to all major South Florida thoroughfares including the Palmetto Expressway and I-95, and has direct frontage on Gratigny Expressway. With its substantial outdoor space and strategic location, this property also holds great potential for users requiring Industrial Outdoor Storage (IOS), offering ample room for storage and logistics operations in the back area of the property. The premises provide an ideal opportunity for a variety of industrial uses, supporting a wide range of business activities. Accessibility is a key feature, with easy ingress and egress for large vehicles, enhancing operational efficiency. This versatile property is designed to accommodate the needs of businesses looking for a well-positioned industrial space in a prime South Florida location.



## Floor Plan



- : Drive-in
- : Drive-in
- : Loading Dock



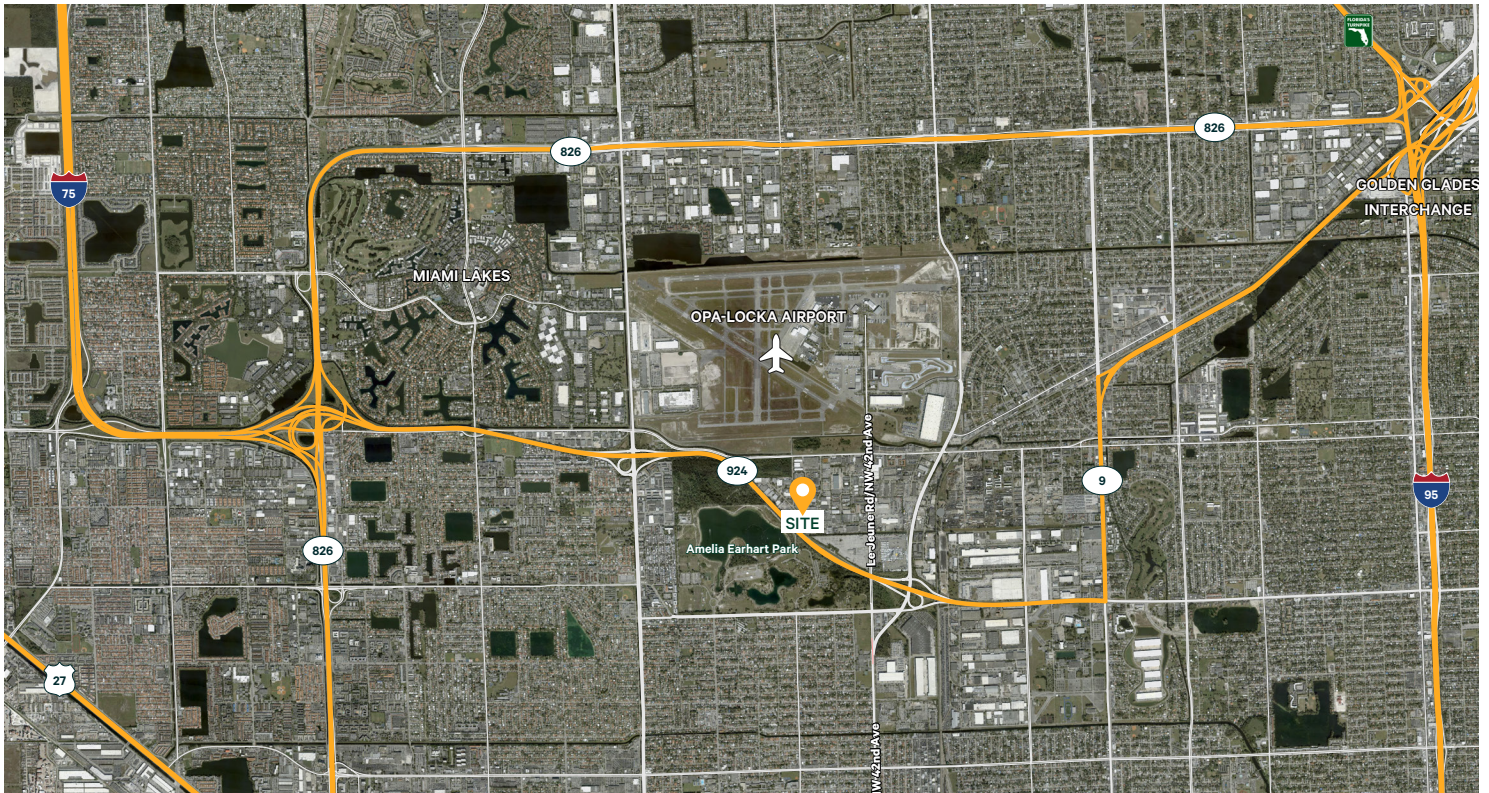
# 4570 NW 128TH STREET

OPA LOCKA, FL 33054



## APPROXIMATE DRIVE TIMES / MILES

826	8 min	4miles
I-95	14 min	5 miles
Florida's Turnpike	20 min	8 miles
MIA Airport	25 min	10 miles
PortMiami	35 min	13 miles
FTL Airport	38 min	18 miles
Port Everglades	40 min	20 miles



## Contact Us

**Nicolas Palazzo**  
Managing Director  
+1 812 327 7088  
nico.palazzo@cushwake.com

**Andrew Fernandez**  
Managing Director  
+1 305 467 1449  
andrew.fernandez@cushwake.com

**Ivanna Leitner Perez**  
Senior Associate  
+1 786 853 5431  
ivanna.leitner@cushwake.com