



933 Watkins
Atlanta, GA 30318
Loft Office | +1,500 - 23,000 SF

933 WATKINS



Jeff Pollock - CCIM, SIOR

jp@pollockcommercial.com

O | (404) 662-2182 M | (404) 964-7060

Katie Sentell - CCIM

katie@pollockcommercial.com

O | (404) 596-8419 M | (404) 394-9599

MORE INFORMATION

Jeff Pollock

CCIM, SIOR

jp@pollockcommercial.com

O | (404) 662-2182 M | (404) 964-7060

Katie Sentell

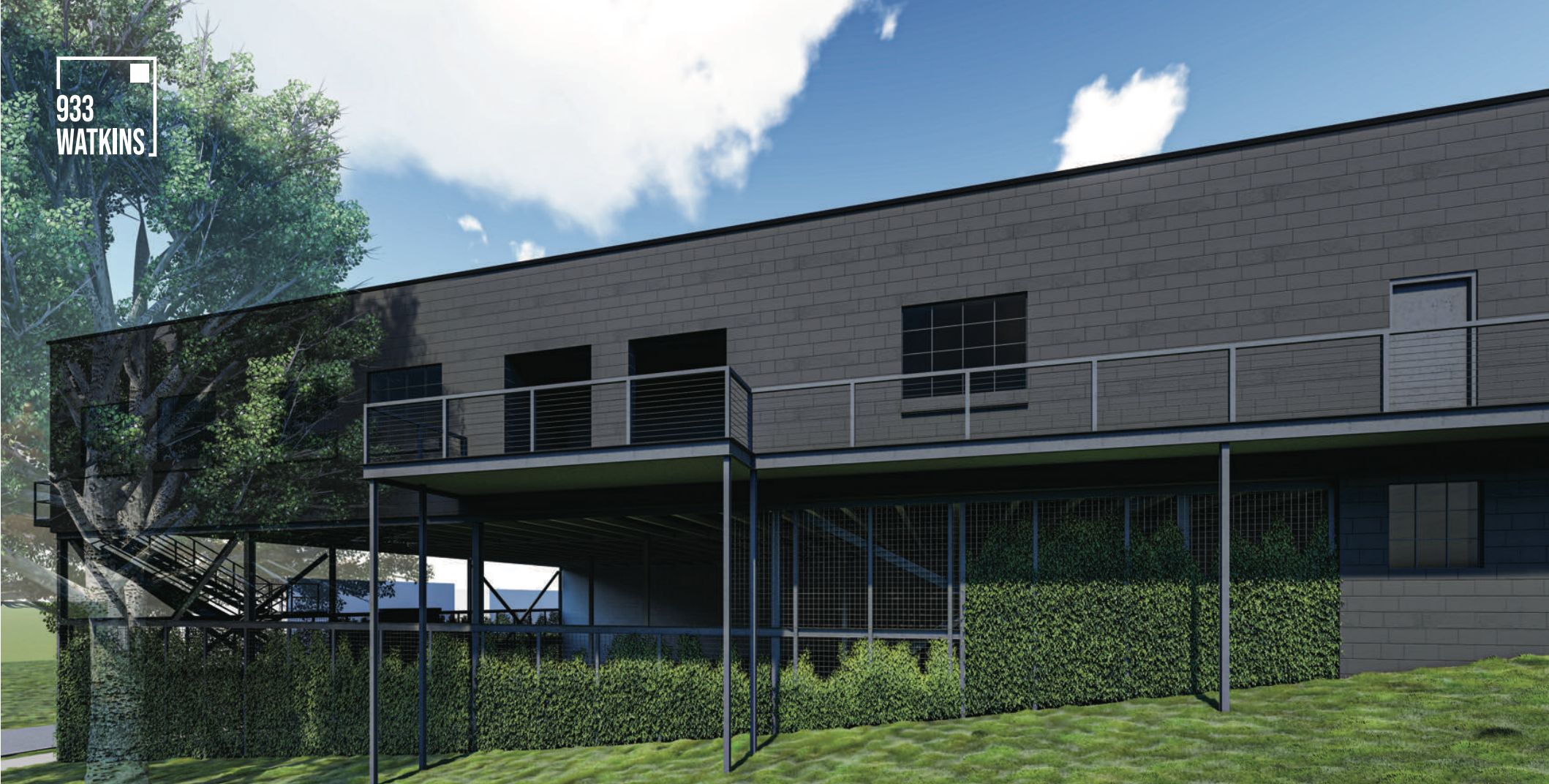
CCIM

katie@pollockcommercial.com

O | (404) 596-8419 M | (404) 394-9599



933
WATKINS



PROPERTY HIGHLIGHTS



1,500 - 23,000 SF
AVAILABLE



FLEXIBLE TERMS



COMPETITIVE
RATES

- ✓ Modern Finishes
- ✓ Private Restrooms
- ✓ Individually Controlled Utilities
- ✓ Common Courtyard
- ✓ Adaptive Re-use Development
- ✓ Walk-Up, Direct Suite Access



CONCEPT RENDERING OF EXTERIOR FINISHES

Jeff Pollock
CCIM, SIOR
jp@pollockcommercial.com
O | (404) 662-2182 M | (404) 964-7060



Katie Sentell
CCIM
katie@pollockcommercial.com
O | (404) 596-8419 M | (404) 394-9599

AREA AMENITIES

DINING

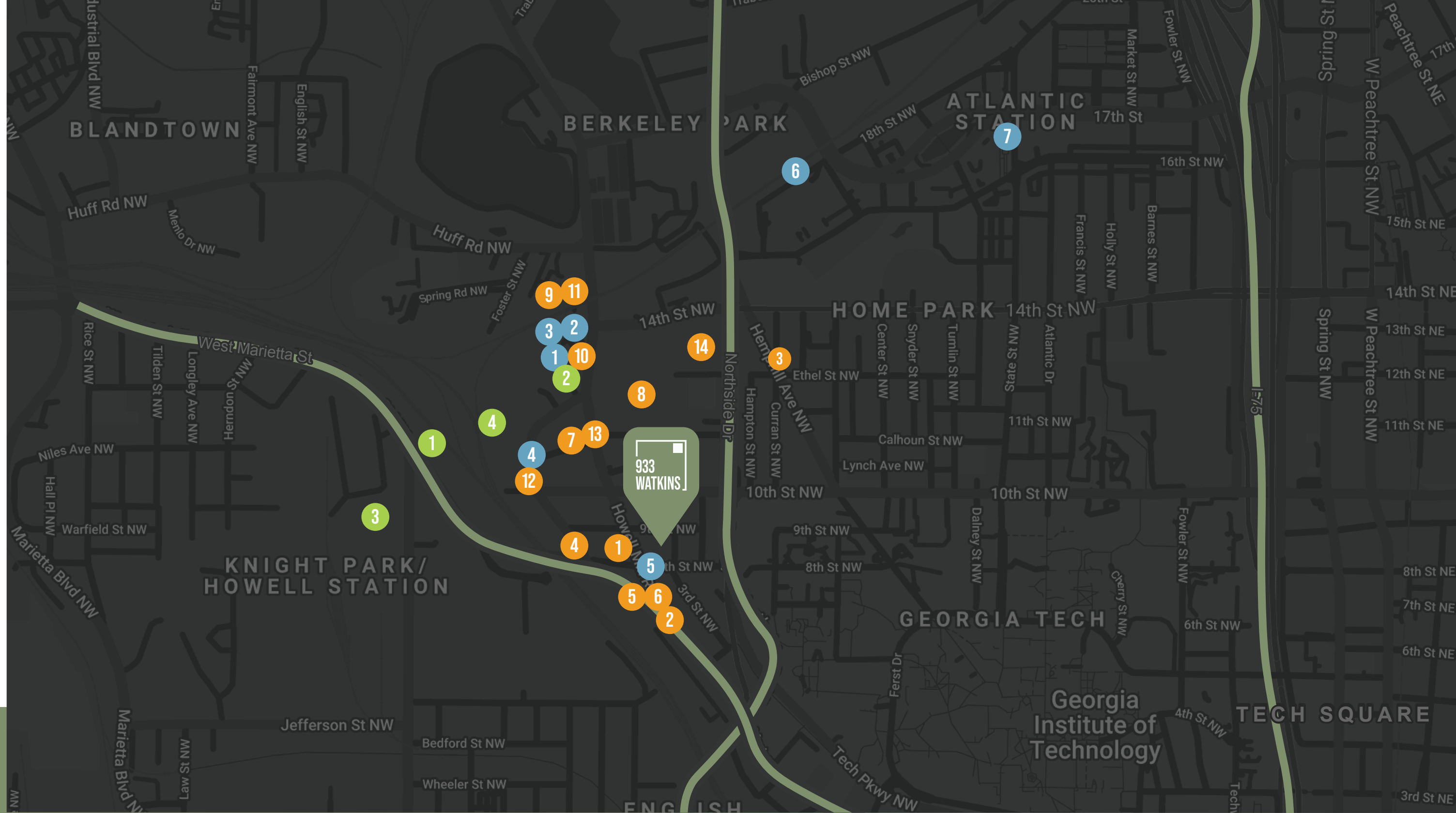
- 1 The Optimist
- 2 LeFat
- 3 Antico
- 4 Eight Sushi Lounge
- 5 Food Terminal
- 6 bartaco
- 7 Slim & Husky's
- 8 Six Feet Under
- 9 Marcel
- 10 Upbeet
- 11 Ormby's
- 12 Miller Union
- 13 LaFonda Latina
- 14 Chik-fil-a

ARTS & ENTERTAINMENT

- 1 King Plow Arts Center
- 2 Northside Tavern
- 3 Foundry at Puritan Mill
- 4 Compound

RETAIL & SERVICES

- 1 White Provision
- 2 Lululemon
- 3 seed factory
- 4 verde Home
- 5 A Ma Maniera
- 6 IKEA
- 7 Atlantic Station





THE OPTIMIST

FOOD



EIGHT SUSHI LOUNGE

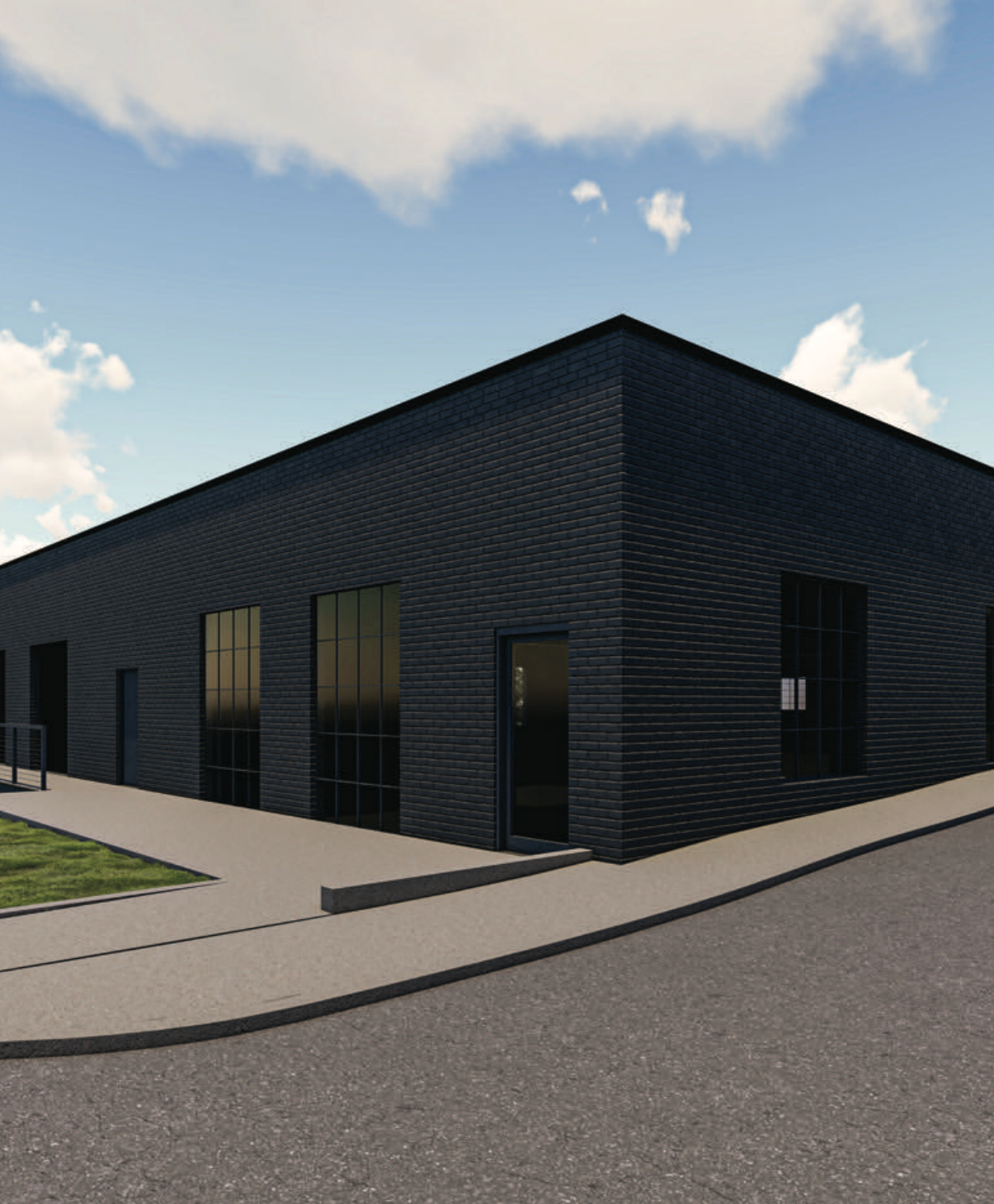
ENTERTAINMENT



KING PLOW ARTS CENTER



NORTHSIDE TAVERN



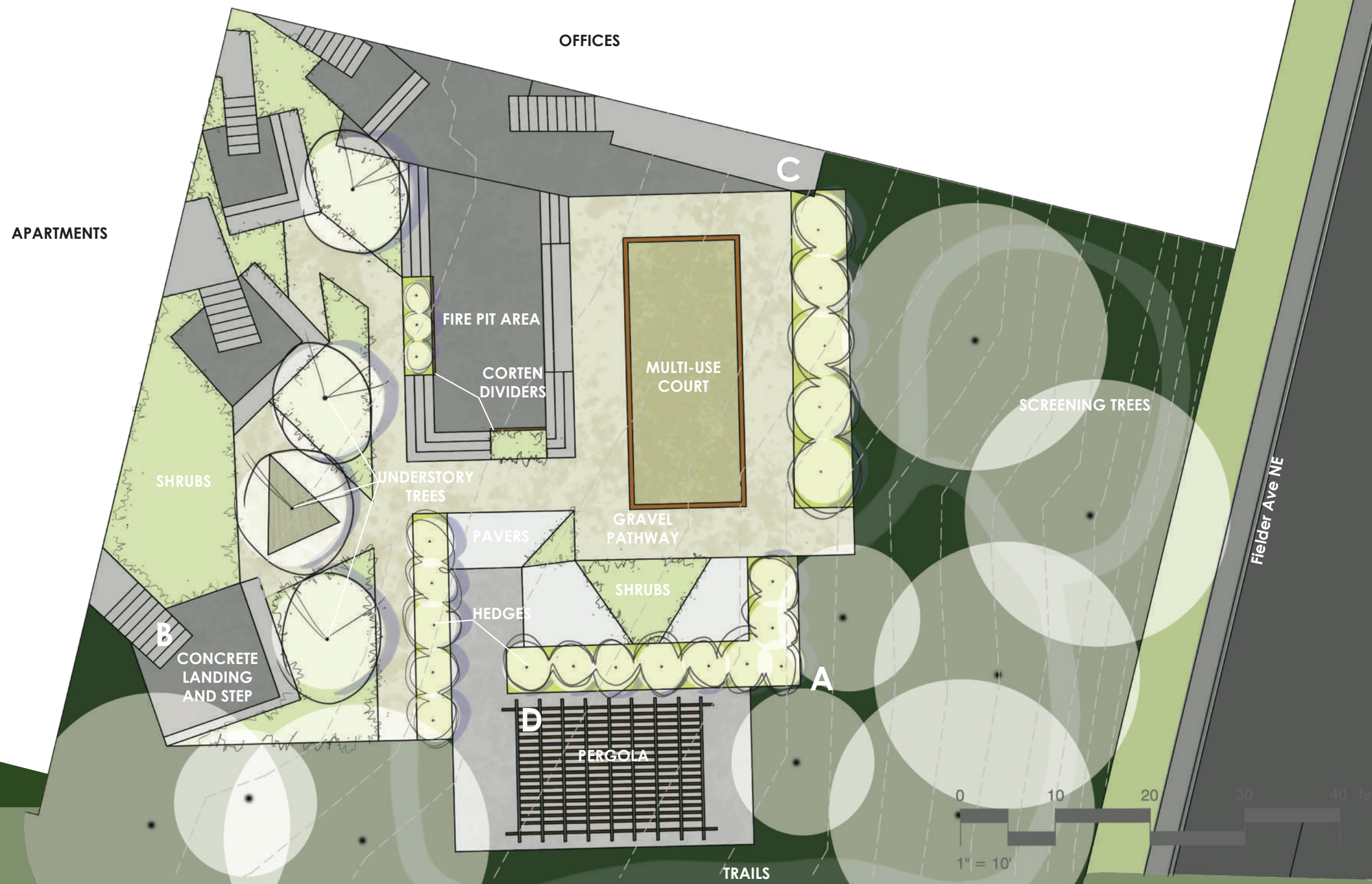
BUILDING PLANS



COURTYARD PLAN

APARTMENTS

OFFICES



SHRUBS

UNDERSTORY TREES

FIRE PIT AREA

CORTEN DIVIDERS

MULTI-USE COURT

SCREENING TREES

PAVERS

GRAVEL PATHWAY

SHRUBS

HEDGES

B

CONCRETE LANDING AND STEP

A

D

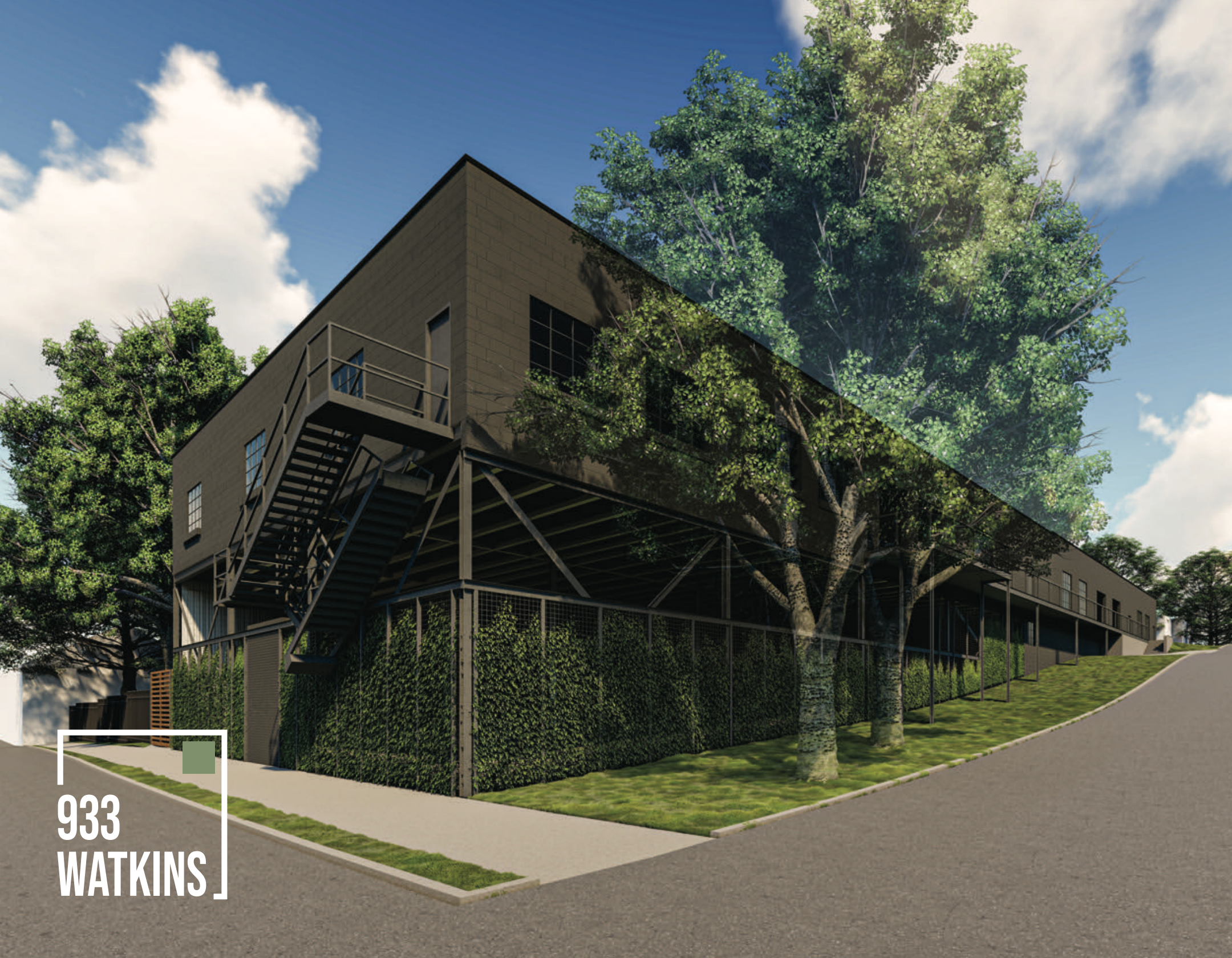
PERGOLA

TRAILS

Fielder Ave NE

EXST. PATHWAY





933
WATKINS