

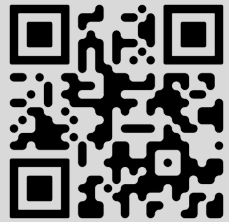


**1111 W  
MOCKINGBIRD  
DALLAS, TX 75247**

**LEASING  
INFORMATION**

**KOLBY DICKERSON**  
KDICKERSON@TXREPROPERTIES.COM  
214-534-1599

**GRANT GOMEZ**  
GRANT@TXREPROPERTIES.COM  
214-734-4725



**BUILDING  
INFORMATION**

- 270,000 RSF Renovated Building
- Abundant surface parking
- Local and responsive ownership

**LOCATION**

- Direct access to Mockingbird Lane, I-35 and HWY - 183
- 15 Minutes from Dallas CBD
- 15 Minutes from DFW Airport
- 5 Minutes from Love Field

**AMENITIES**

- On-site Deli
- Fitness Center
- Tenant Lounge
- On-site 75 person Conference Center
- On-site Management & Security

**Move-in ready  
suites ranging  
from  
600 - 15,000 RSF**

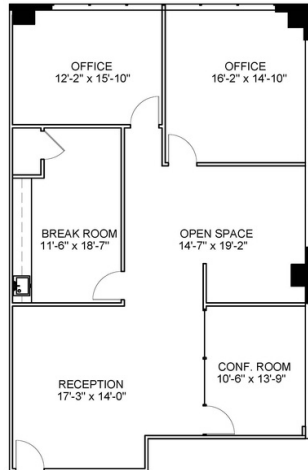




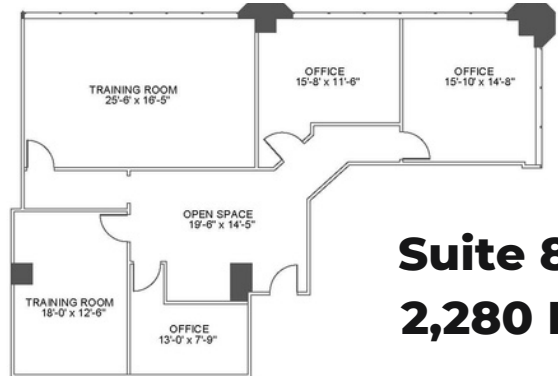
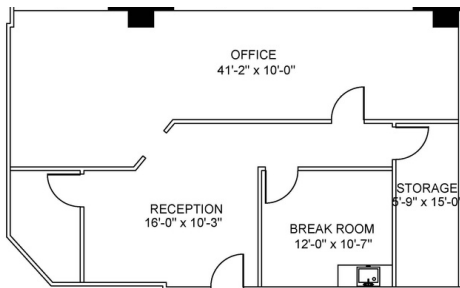
**Starbucks  
On-Site!**



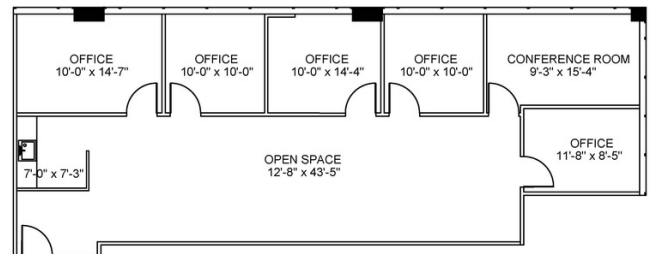
**Suite 610  
1,947 RSF**



**Suite 825  
1,465 RSF**



**Suite 815  
2,280 RSF**



**Suite 276  
1,765 RSF**

**LEASING INFORMATION**

**Kolby Dickerson**  
kdickerson@txreproperties.com  
214-534-1599

**Grant Gomez**  
grant@txreproperties.com  
214-734-4725

