

OFFICE SPACE FOR LEASE

2900 WILCREST

HOUSTON, TX 77042

FULL FLOOR AVAILABLE



BUILDING AMENITIES & FEATURES

- Lobby Renovated in 2017
- Card key access
- On-site management
- On-site security
- Vending area
- Free covered parking; Ratio of 3.80/1,000
- Mail Room, Express Mail, Fed Ex drop with daily pickup
- Hotel located within one mile

FOR LEASING INFORMATION, CONTACT:

TROY W. COLLINS | 713.256-5545
tcollins@collinsrg.com

THIRD FLOOR AVAILABLE
Combination of office and open concept, boardroom, kitchens.



Excellent location on Wilcrest between Westheimer and Richmond in the Westchase District; minutes away from the Beltway 8.



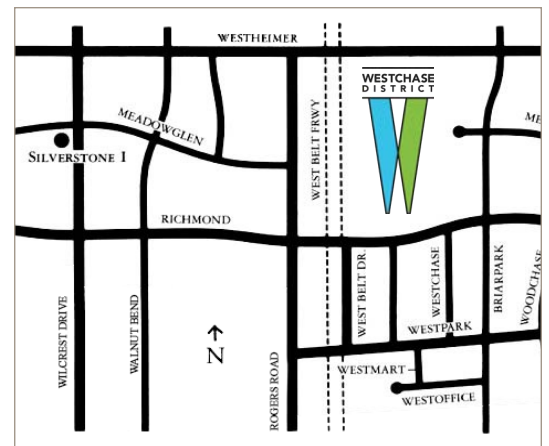
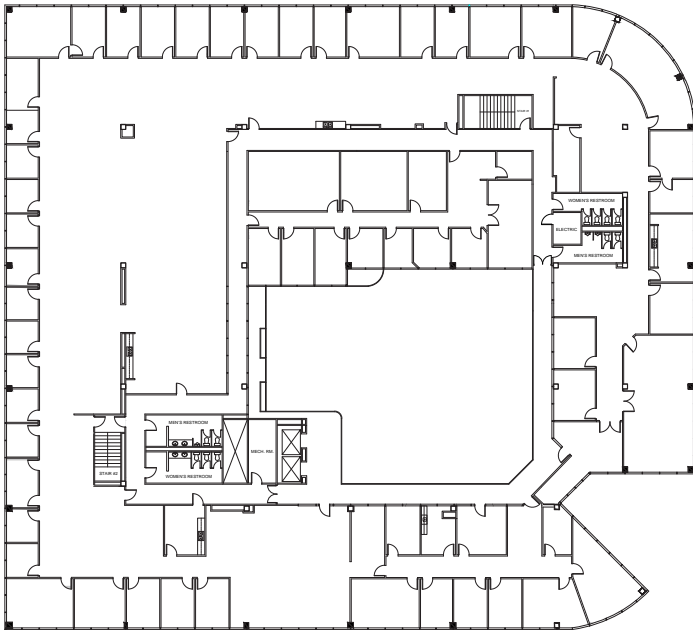
2900 WILCREST

AVAILABLE SPACE

| SUITE | SQ. FT. | COMMENTS |
|-------|---------|--|
| 102 | 1,081 | Open concept. |
| 103 | 682 | Reception, 1 office and storage. |
| 115 | 2,200 | Open concept, reception, break, storage, 1 office. |
| 125 | 2,689 | Reception, conference, break, storage, IT and 5 offices. |
| 167 | 864 | Reception, storage and 2 offices. |
| 250 | 2,859 | Open area with 6 offices. |
| 255 | 953 | Open reception with 2 offices. |
| 285 | 3,578 | 5 offices, bullpen areas, work room and storage. |
| 295 | 579 | Open area with 1 office. |
| 297 | 428 | Reception with 1 office. |
| 300 | 29,967 | Full Floor; combination of office and open concept, boardroom, kitchens. |
| 400 | 8,520 | Combination of offices and open area. |
| 420 | 2,886 | Open concept with 2 offices. |



SUITE 300 | FULL FLOOR: (29,967 RSF)



FOR LEASING INFORMATION, CONTACT:

TROY W. COLLINS | 713.256-5545

tcollins@collinsrg.com

