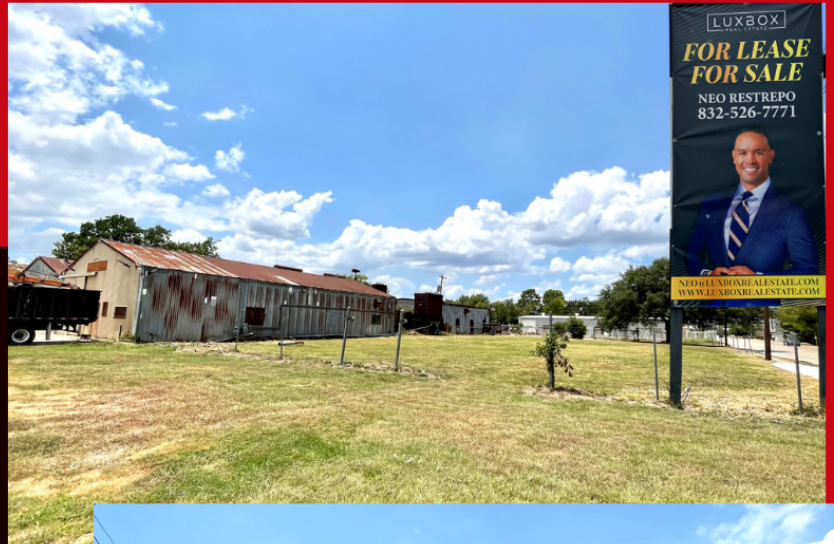


- NEW DEVELOPMENT ACROSS THE STREET
- NOT IN A FLOOD ZONE
- INSIDE THE LOOP

STRATEGICALLY  
POSITIONED WITH  
QUICK ACCESS TO THE  
MEDICAL CENTER  
288, I-610, AND HWY 90



*Neo Restrepo*

832-526-7771

NEO@LUXBOXREALESTATE.COM

