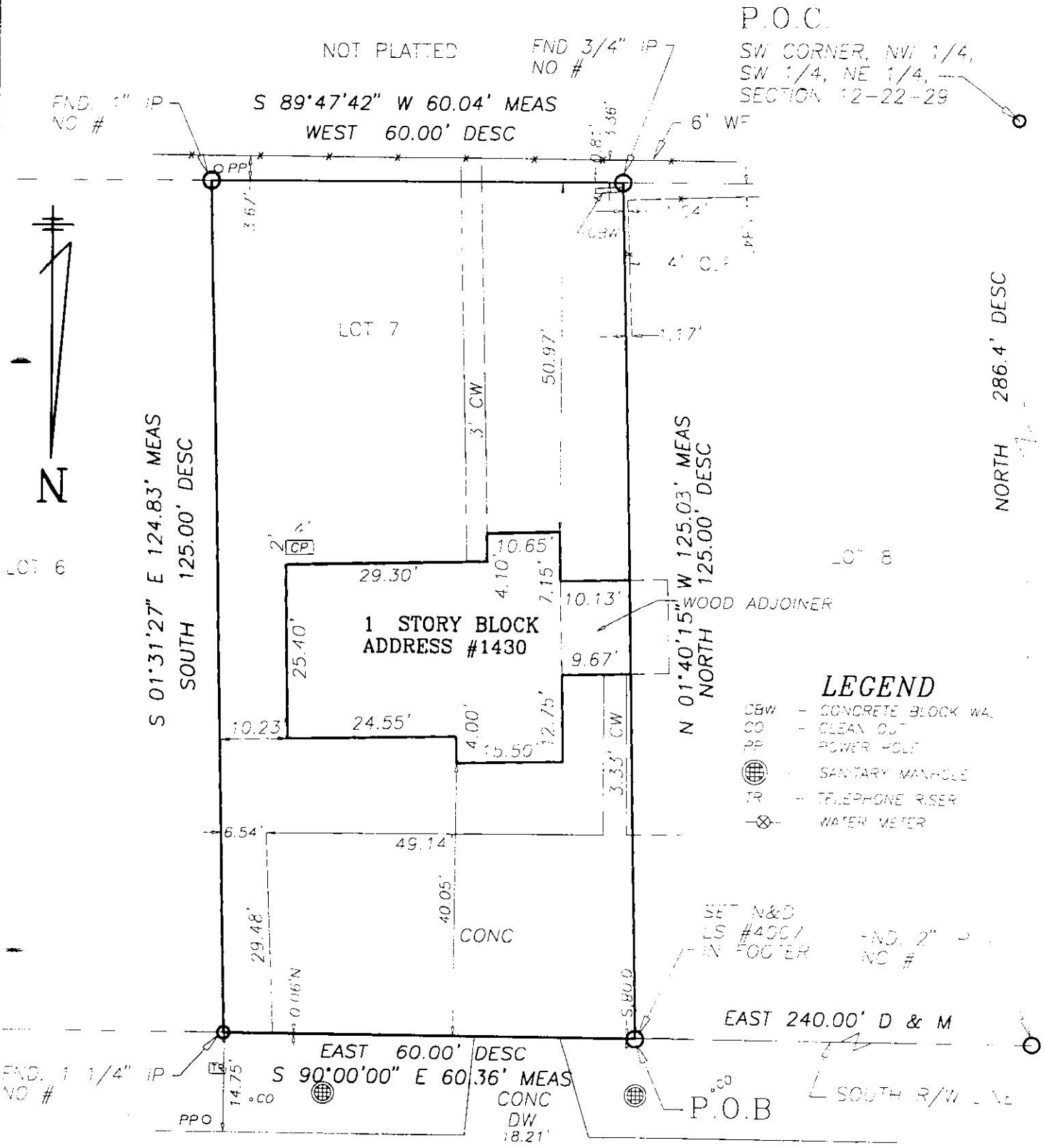


PLAT OF SURVEY DESCRIPTION

PARCEL 2:

LOT 7, COMMERCIAL COURT, ORANGE COUNTY, FLORIDA, FROM THE SW CORNER OF THE NW 1/4 OF SW 1/4 OF NE 1/4 OF SECTION 12, TOWNSHIP 22 SOUTH, RANGE 29 EAST, RUN NORTH 286.4 FEET TO GENE STREET, THENCE EAST 240 FEET TO THE POINT OF BEGINNING; THENCE 60 FEET, SOUTH 125 FEET, WEST 60 FEET, NORTH 125 FEET TO POINT OF BEGINNING.



P.O.C.
SW CORNER, NW 1/4,
SW 1/4, NE 1/4,
SECTION 12-22-29

NOT PLATTED
FND 3/4" IP
NO #
S 89°47'42" W 60.04' MEAS
WEST 60.00' DESC

S 01°31'27" E 124.83' MEAS
SOUTH 125.00' DESC

N 01°40'15" W 125.03' MEAS
NORTH 125.00' DESC

NORTH 286.4' DESC

1 STORY BLOCK
ADDRESS #1430

LEGEND

- CBW - CONCRETE BLOCK WA.
- CO - CLEAN OUT
- PP - POWER POLE
- ⊕ - SANITARY MANHOLE
- TR - TELEPHONE RISER
- ⊗ - WATER METER

SET N&D
LS #4007
IN FOOTER
FND. 2" IP
NO #

EAST 240.00' D & M

EAST 60.00' DESC
S 90°00'00" E 60.36' MEAS

P.O.B.

SOUTH R/W LINE

FND. 1 1/4" IP
NO #

CONC
DW
18.21