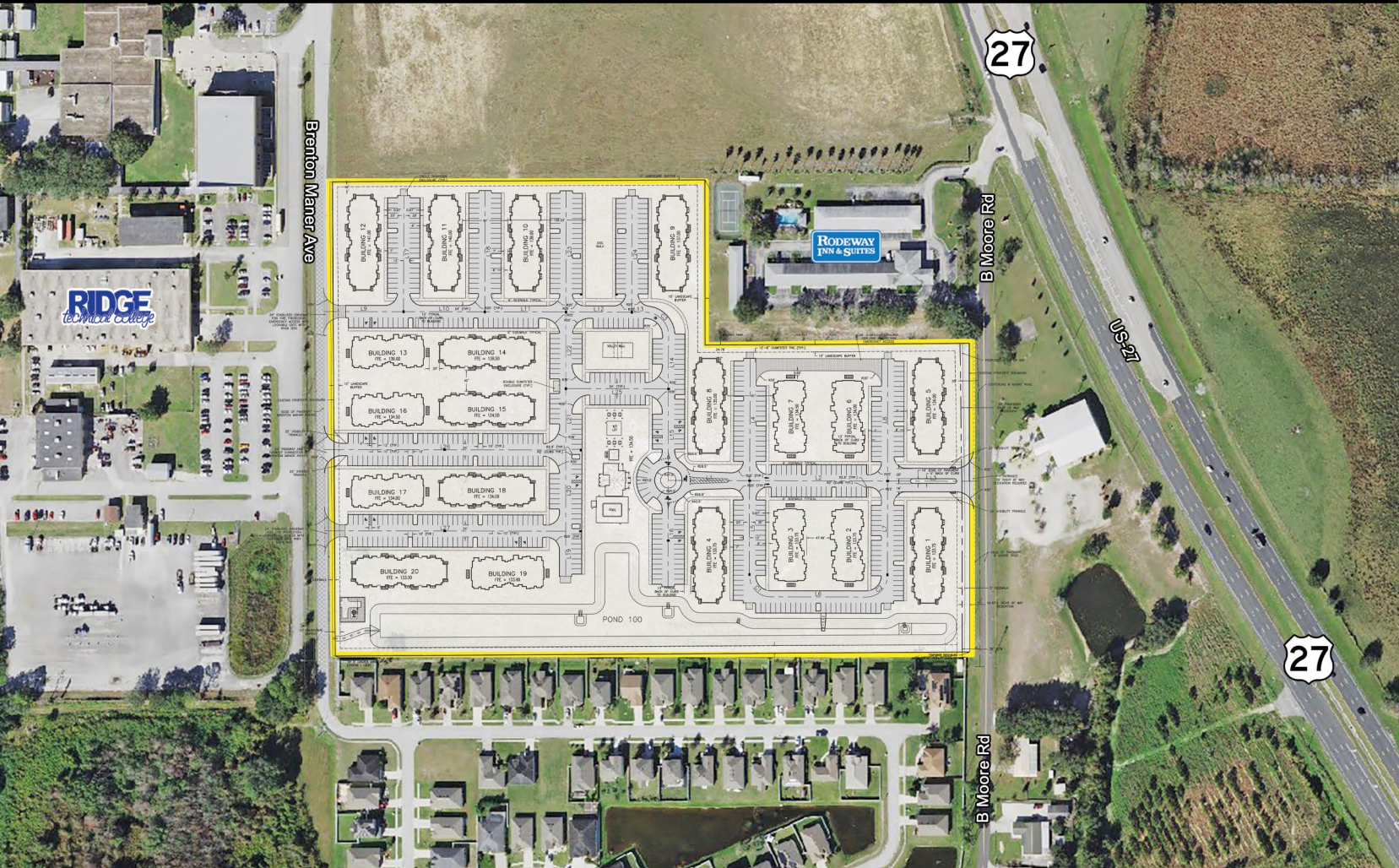


FOR SALE
23.57 ACRES
B MOORE RD, WINTER HAVEN, 33881



Residential Land Location in Winter Haven, FL. Winter Haven is a city in central Florida, known for its canal-linked Chain of Lakes. Several lakes have waterside parks and eateries, as well as boat ramps and water-sports rentals. On Lake Eloise, Legoland Florida Resort includes Cypress Gardens, a 1930s botanical garden, and Lego-brick attractions, rides and a water park. West of the city, Circle B Bar Reserve has forest trails and alligator-inhabited wetlands.

- Proposed 368 Units - Residential Multi-Family
- Final Engineering approved - All permits done.
- Just few miles from Supermarkets, Retail, Restaurants Doctors office and more...
- Excellent Location with easy access to Hwy 27 and I-4

PROPERTY HIGHLIGHTS

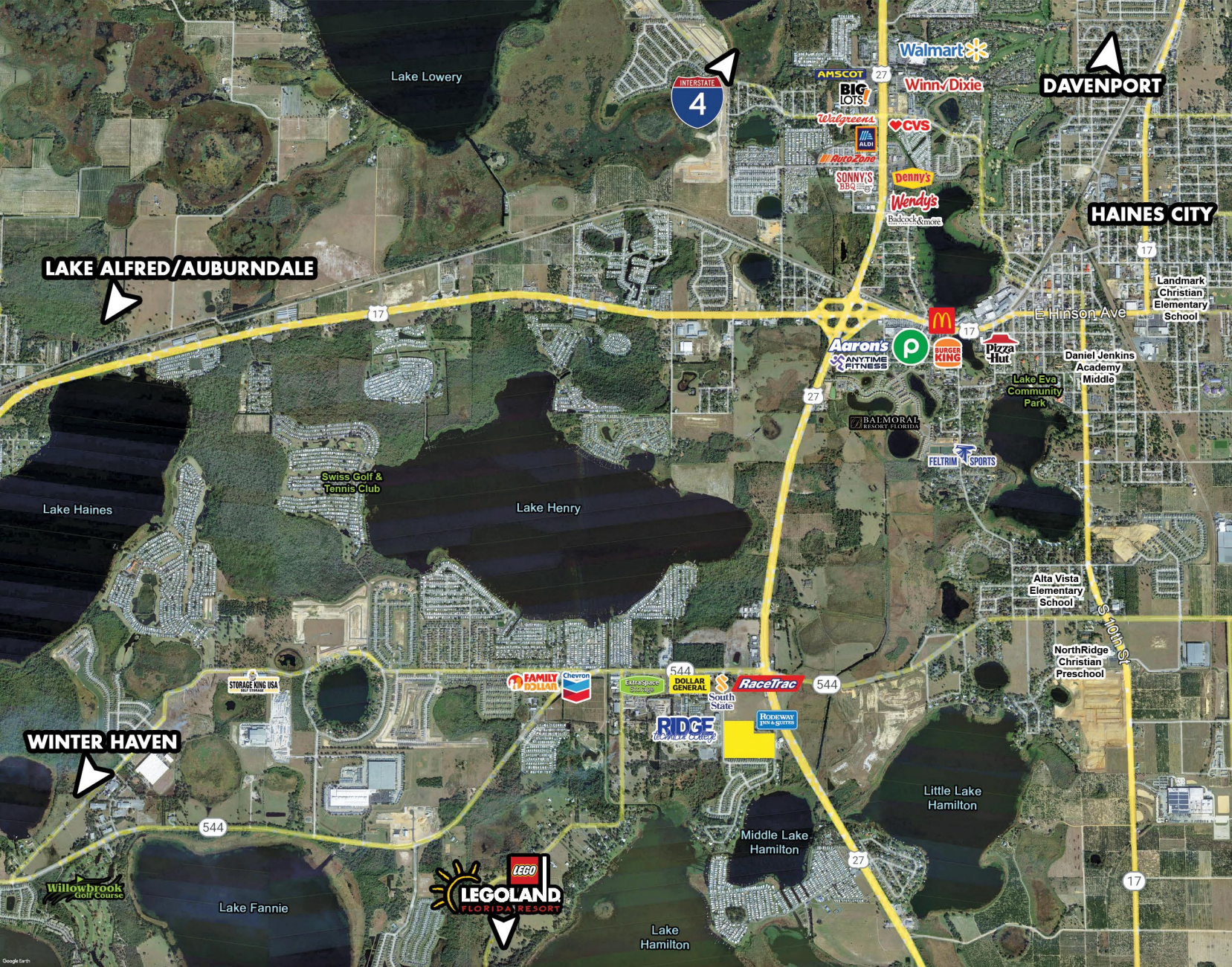
SIZE:
23.57 Acres Total

ZONING:
Residential

ADDRESS:
B Moore Rd
Winter Haven, FL 33881

COUNTY:
Polk County

PRICE:
\$6,000,000



BOBBY LUTHRA

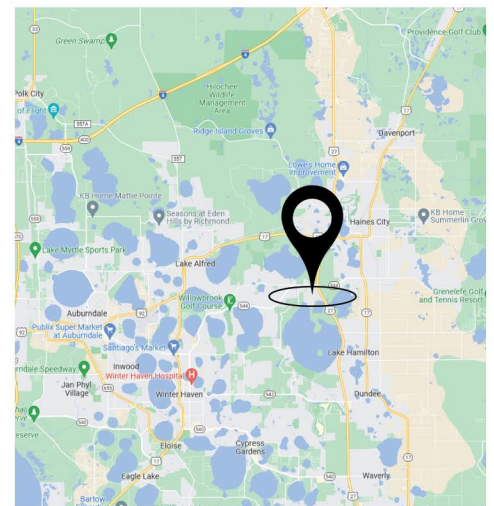
Licensed Real Estate Associate

407-468-0099

bobluthra@pibland.com

OFFICE LOCATION:
27 N Summerlin Ave
Orlando, FL 32801

CONTACT US:
Phone: 407-649-9888
Fax: 407-649-7222



This document has been prepared by Property Investment Brokers for advertising and general information only. No warranty or representation, express or implied, is made as to the accuracy of the information contained herein, and same is submitted subject to errors, omissions, change of price, rental or other conditions, withdrawal without notice, and to any special listing conditions imposed by our principals.

