

330 East Main Street Westfield, MA

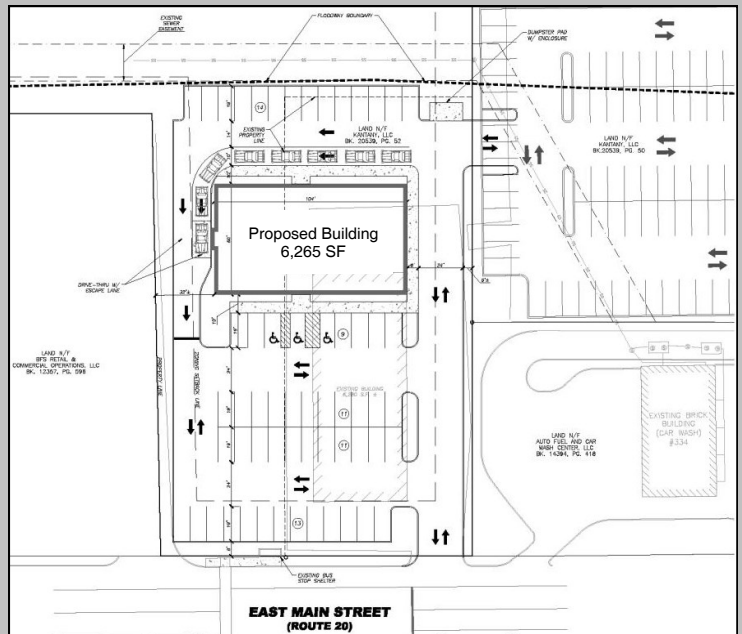


FOR LEASE

Colebrook Realty Services, Inc. is pleased to represent the property owner as exclusive agent in offering for lease an approximately 6,200 square foot retail building on .46 acres of land. Located on Route 20, this property enjoys great visibility, easy highway access, high traffic volumes along the retail corridor of Rt. 20 and is in close proximity to Home Depot, 99 Restaurant, CVS, Applebees, Five Guys and many other national retailers.

Building Size:	Approximately 6,200 SF
Land Area:	.46 acres
Zoning:	Business A
Electricity:	200 AMP
Heat:	Gas/Oil
Air Conditioning:	Central
Overhead Door:	One (1) 8' x 8'
Parking:	Ample on-site
Taxes:	FY 2017 \$12,369.89

Redevelopment Concept Plan



Please contact **Mitch Bolotin** for additional information or to arrange a tour.



1441 Main Street
Springfield, MA 01103

Tel: (413) 781-0066
Fax: (413) 732-8124

WWW.COLEBROOKREALTY.COM

330 East Main Street
Westfield, MA



FUTURE HOME



DOLLAR TREE



187

Please contact **Mitch Bolotin** for additional information or to arrange a tour.



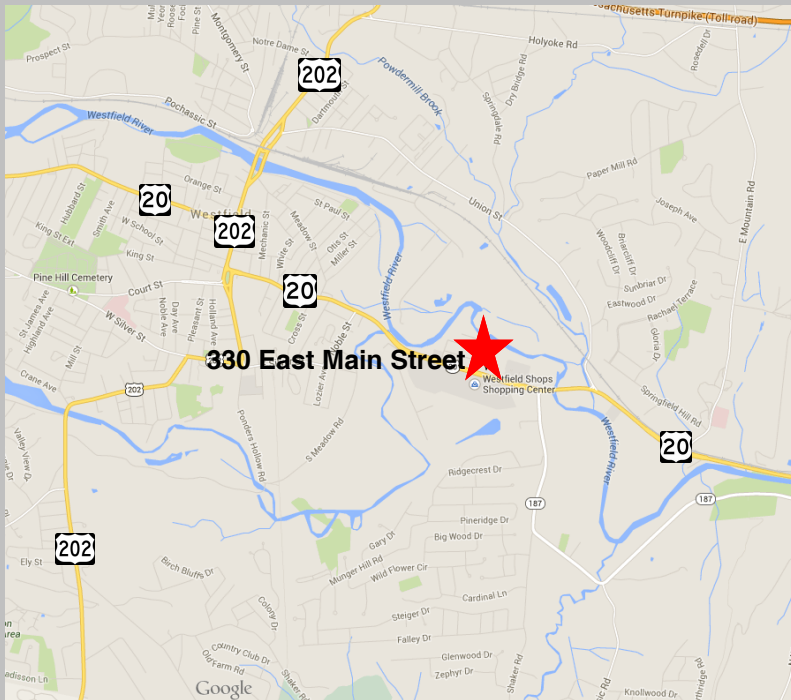
1441 Main Street
Springfield, MA 01103

Tel: (413) 781-0066
Fax: (413) 732-8124

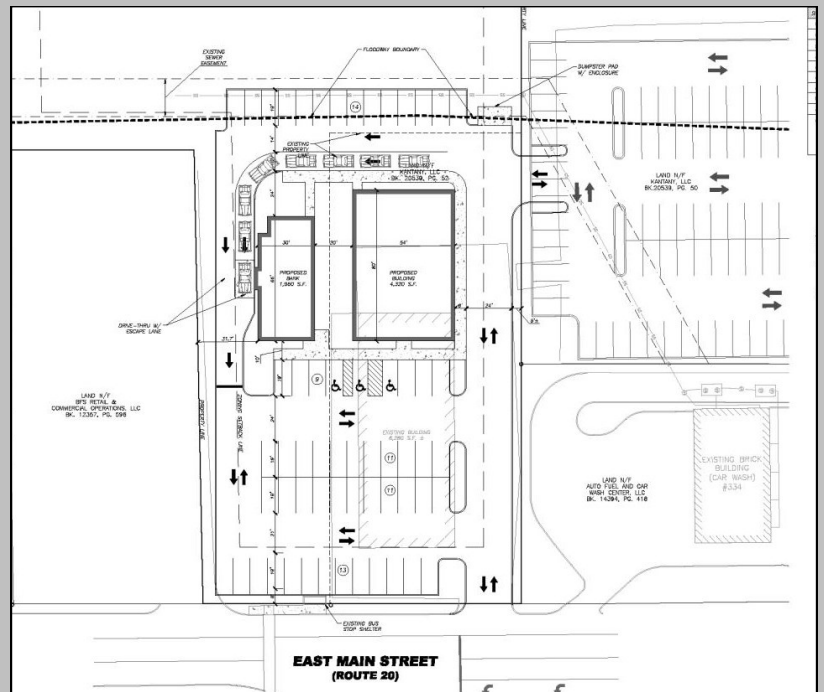
WWW.COLEBROOKREALTY.COM

Colebrook Realty Services, Inc. provides commercial real estate services. The information herein is from sources deemed reliable but no warranty of representation is made as to the accuracy thereof. Unless otherwise disclosed, Colebrook Realty Services, Inc. is acting solely on behalf of the Property Owner as exclusive agent in the marketing of the subject property.

330 East Main Street Westfield, MA



Alternate Concept Plan



Please contact **Mitch Bolotin** for additional information or to arrange a tour.



1441 Main Street
Springfield, MA 01103

Tel: (413) 781-0066
Fax: (413) 732-8124

WWW.COLEBROOKREALTY.COM