

FOR SUBLEASE

±50,400 SF CONTRACTORS YARD



24461 STATE HIGHWAY 74 | PERRIS, CA 92570



LEE & ASSOCIATES
COMMERCIAL REAL ESTATE SERVICES

**SAM
ROBLES**

Vice President
951.445.4519
srobles@lee-associates.com
DRE #01982449

**GARRET
GILLILAND**

Vice President
951.276.3648
ggilliland@lee-associates.com
DRE #02075196

Lee & Associates Commercial Real Estate Services, Inc. - Riverside | 4193 Flat Rock Drive, Suite 100, Riverside, CA 92505 | Corporate DRE #01048055
All information furnished regarding property for sale, rental or financing is from sources deemed reliable, but no warranty or representation is made to the accuracy thereof and same is submitted to errors, omissions, change of price, rental or other conditions prior to sale, lease or financing or withdrawal without notice. No liability of any kind is to be imposed on the broker herein. www.lee-associates.com



SITE SUMMARY

APN	Part of a Larger Parcel (APN 342-100-058)
Land SF/Acres	±50,400 SF/±1.16 Acres Industrial Yard Space Available
Yard	Fenced and Secured
Zoning	M-SC Zoning, County of Riverside Click Here for Zoning
Utilities	Water, Internet, and Electricity
Improvements	Property Includes Storage Container and Workshed
Freeway	Located Off HWY 74
Master Lease	Expires April 30, 2028



FOR SUBLEASE ± 1.16 ACRES

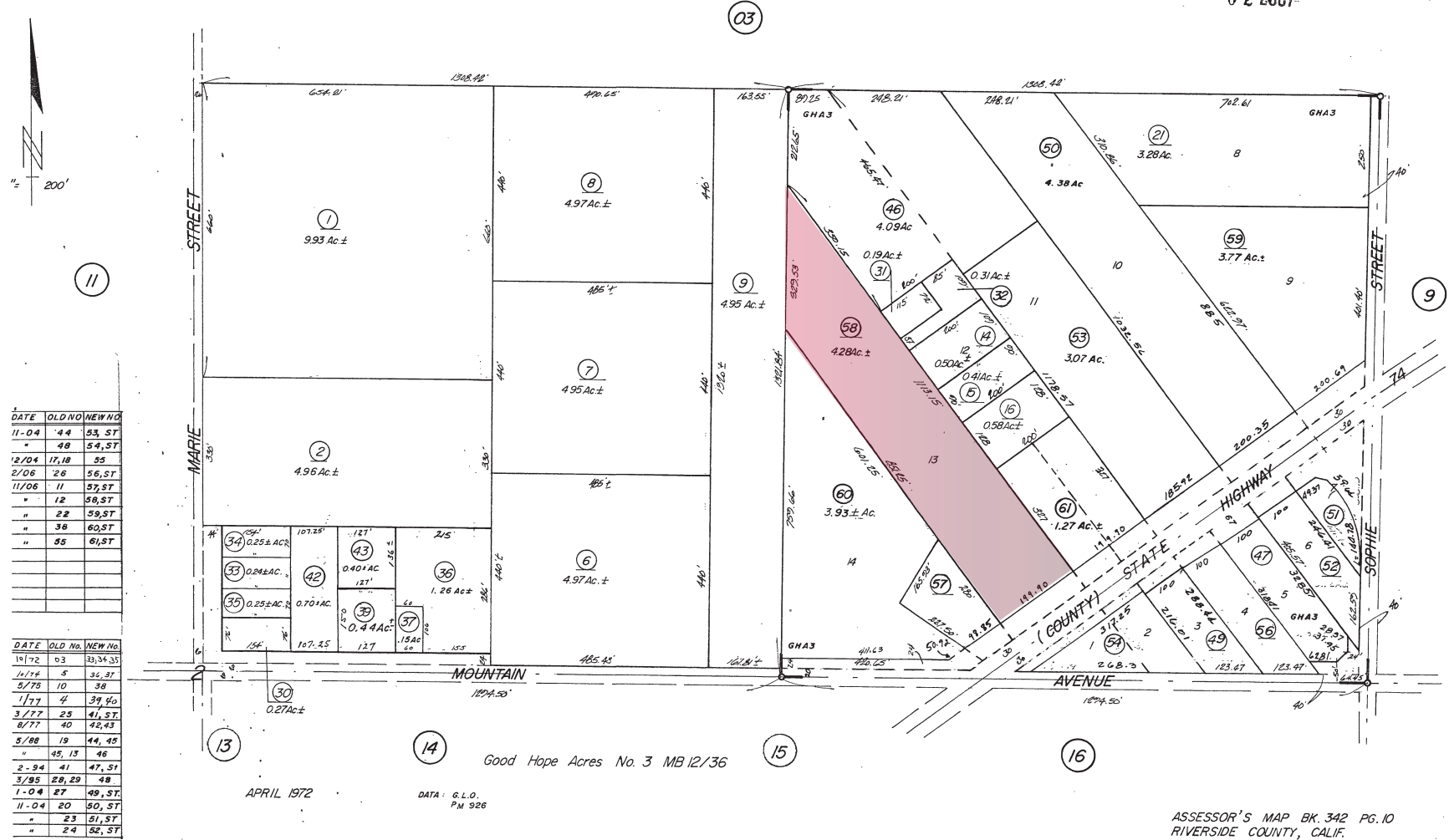
PARCEL MAP

16-44
342-10

T.R.A. 8714

S1/2 NE1/4, SEC.2, T.5S., R.4W.

THIS MAP IS FOR
ASSESSMENT PURPOSES ONLY
JAN 02 2007



DATE	OLD NO.	NEW NO.
11-04	44	93, ST
"	48	54, ST
12/04	17, 18	55
2/06	26	56, ST
11/06	11	57, ST
"	12	58, ST
"	22	59, ST
"	38	60, ST
"	55	61, ST

DATE	OLD NO.	NEW NO.
1972	03	33, 34, 35
1/14	5	36, 37
5/75	10	38
1/77	4	39, 40
3/77	23	41, 51
8/77	40	42, 43
5/88	19	44, 45
"	45, 13	46
2-94	41	47, 51
3/95	28, 29	48
1-04	27	49, 51
11-04	20	50, 51
"	23	51, 51
"	24	52, 51

APRIL 1972

DATA: G.L.O.
P.M. 926

Good Hope Acres No. 3 MB 12/36

ASSESSOR'S MAP BK 342 PG. 10
RIVERSIDE COUNTY, CALIF.



24461 STATE HIGHWAY 74 | PERRIS, CA 92570

FOR SUBLEASE ± 1.16 ACRES

