

FOR SALE - \$249,900.00

[MORE PHOTOS](#)


FAST FACTS



Zoning District
Summary



Unified Development
Ordinances



336.314.3538

info@oakdalecommercial.com



www.oakdalecommercial.com

1064 Salisbury Ridge Rd, Winston-Salem, NC 27127 | PIN: 6824-75-9688

COMMERCIAL INVESTMENT OPPORTUNITY

Bank-Owned (REO) Commercial Property with Value-Add Potential | Winston-Salem, NC

- Square Footage: +/- 1,055 Sq Ft (Main Level)
- Additional Space: Includes Unfinished Basement +/- 1,026 | Sq Ft) and Unfinished Attic +/- 410 Sq Ft)
- Zoning: Highway Busines (HB)
- Total Acreage: Lot Size: +/- 0.22 Acres
- Year Built: 1954
- High Visibility from Peters Creek and Silas Creek Parkways
- Close Proximity to I-40 with a VPD (Vehicles Per Day) of 57,950.
- Rear of property secured by chainlink fence

02 **FOR SALE - \$249,900.00**

NEXT



1064 Salisbury Ridge Rd, Winston-Salem, NC 27127 | PIN: 6824-75-9688

FRONT



BACK



Call 336-314-3538 Or Visit oakdalecommercial.com To Learn More.

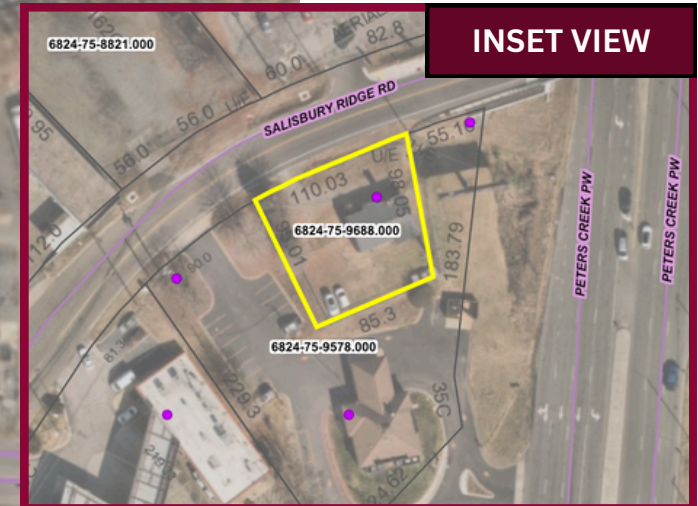
PARCEL MAPS

Centrally located near I-40, Peters Creek Parkway and Silas Creek Parkway

NEXT



IN-DEPTH

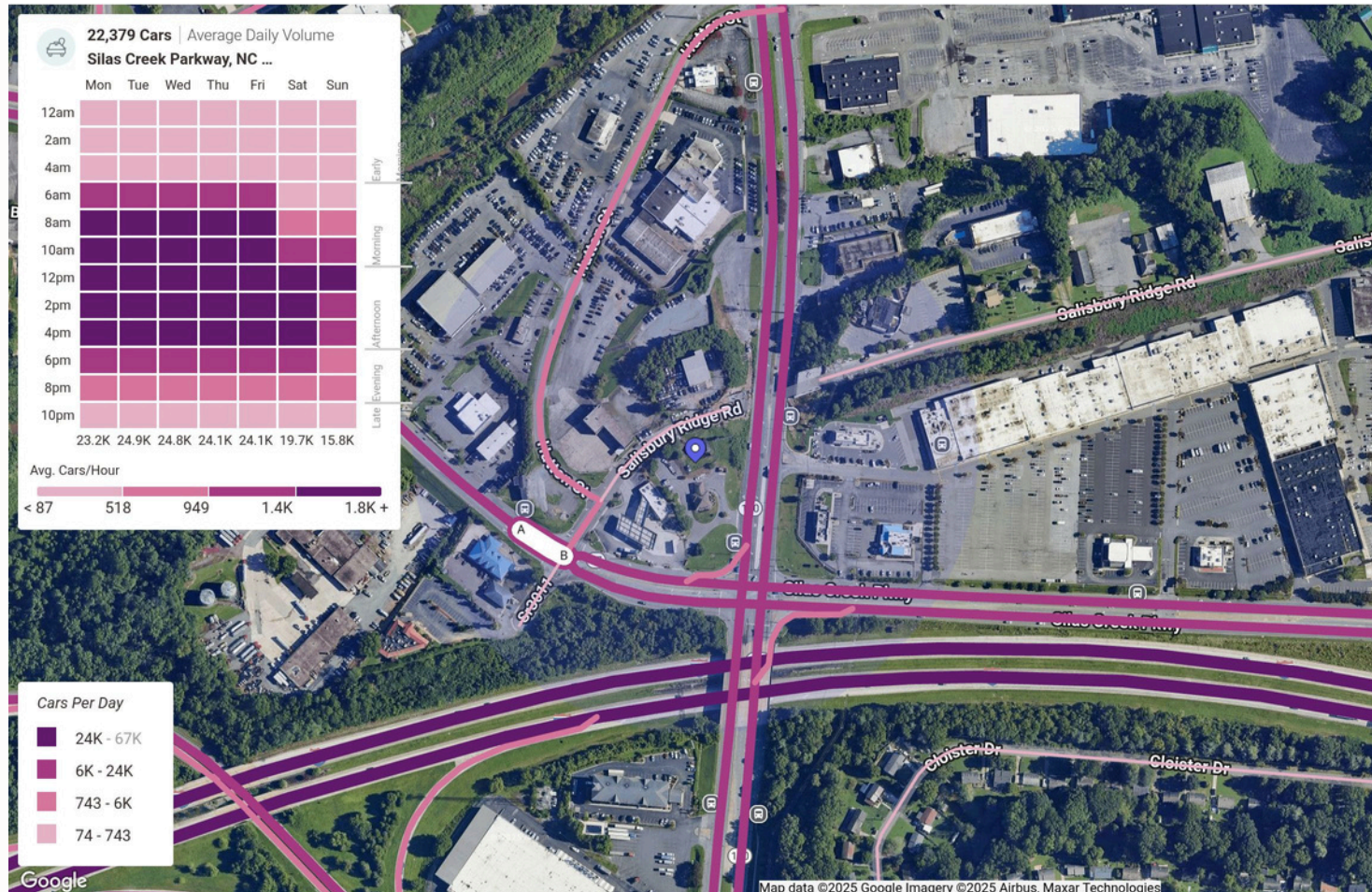


INSET VIEW

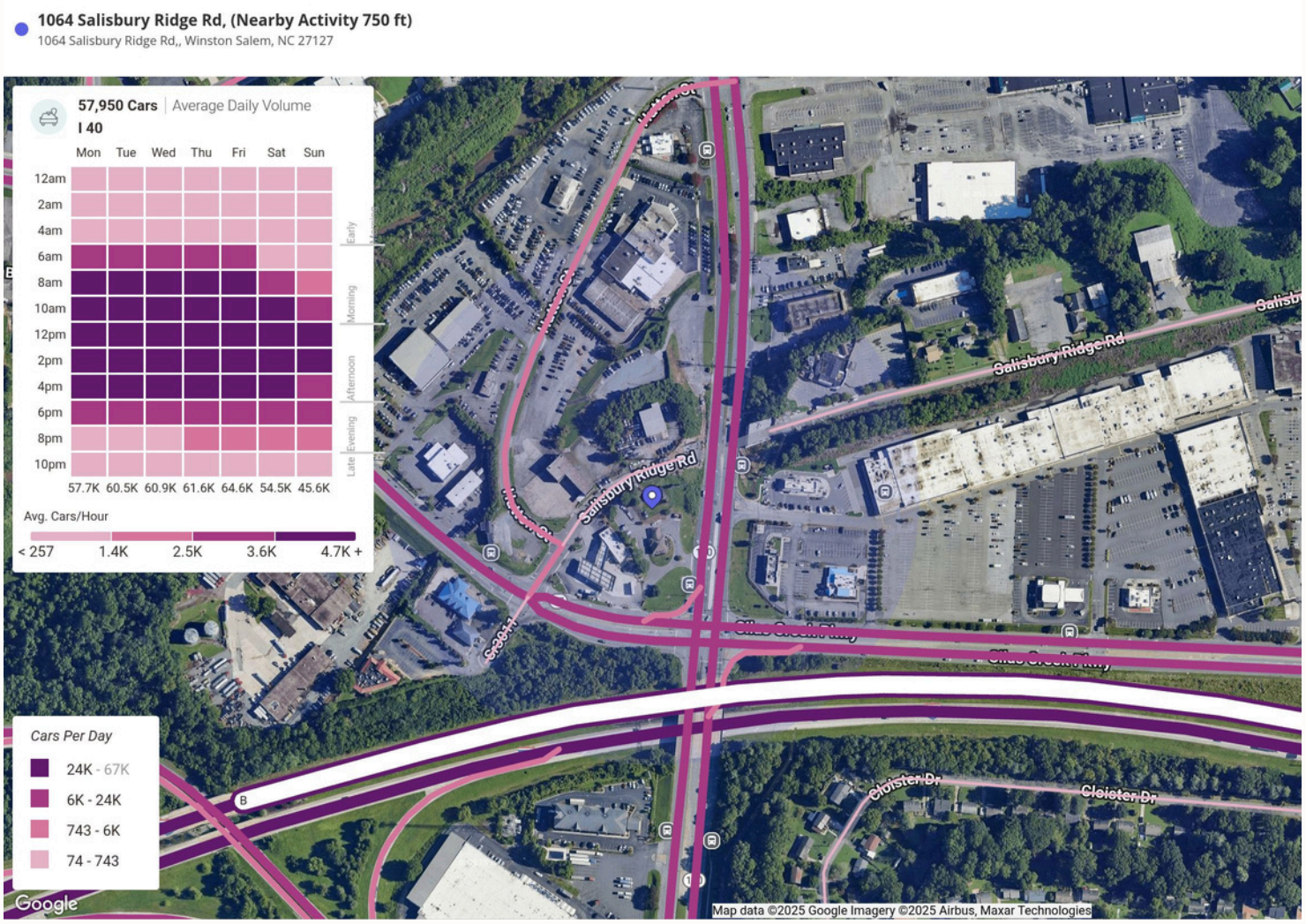
Total Acreage: Lot Size:
+/- 0.22 Acres

Silas Creek Parkway

1064 Salisbury Ridge Rd, (Nearby Activity 750 ft)
1064 Salisbury Ridge Rd., Winston Salem, NC 27127



Interstate 40



1064 Salisbury Ridge Rd., Winston Salem, NC 27127

