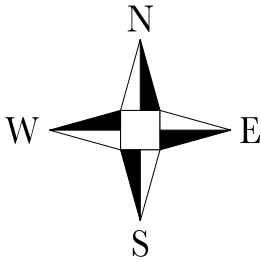
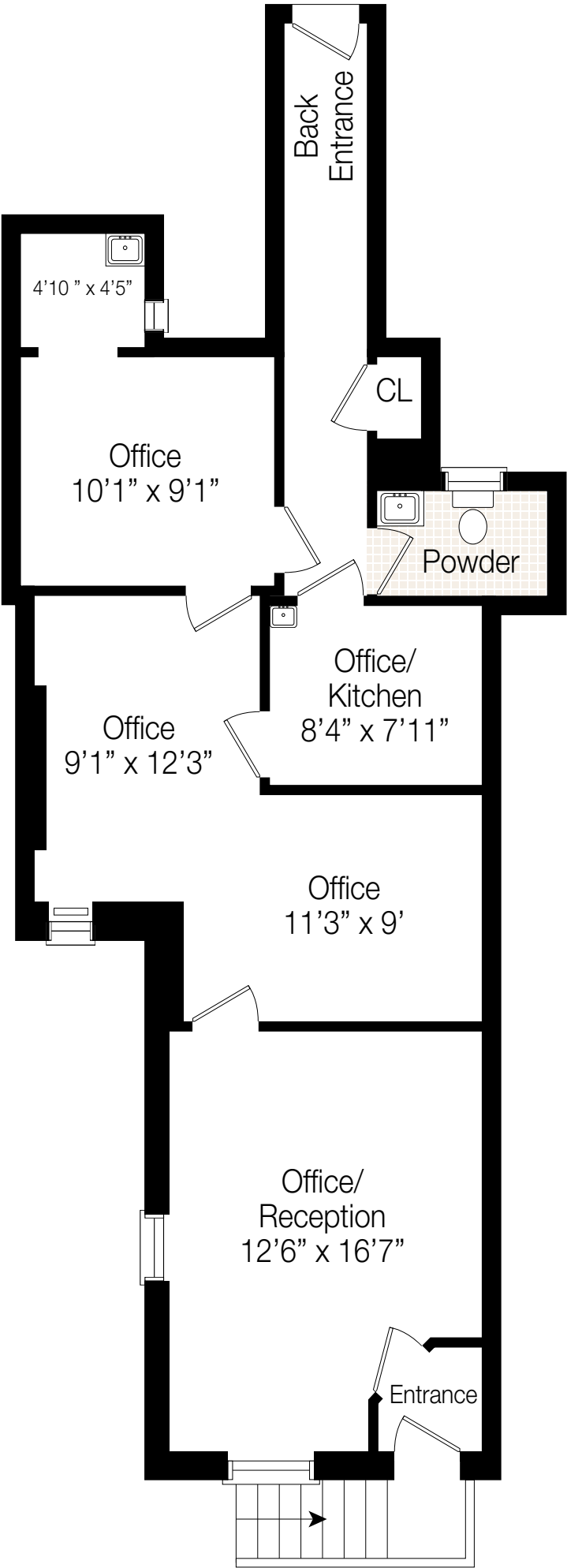


84 GROVE STREET APT 3 NEW YORK



CH: 11'3"
INT: 817 ft²



**COLDWELL BANKER
WARBURG**

Sizes and dimensions are approximate, actual may vary. 2025 Coldwell Banker Warburg. All Rights Reserved. Coldwell Banker Warburg and the Coldwell Banker Warburg logo are trademarks of Coldwell Banker Real Estate LLC. The Coldwell Banker System is comprised of company owned offices which are owned by a subsidiary of Anywhere Advisors LLC and franchised offices which are independently owned and operated. The Coldwell Banker System fully supports the principles of the Fair Housing Act and the Equal Opportunity Act.