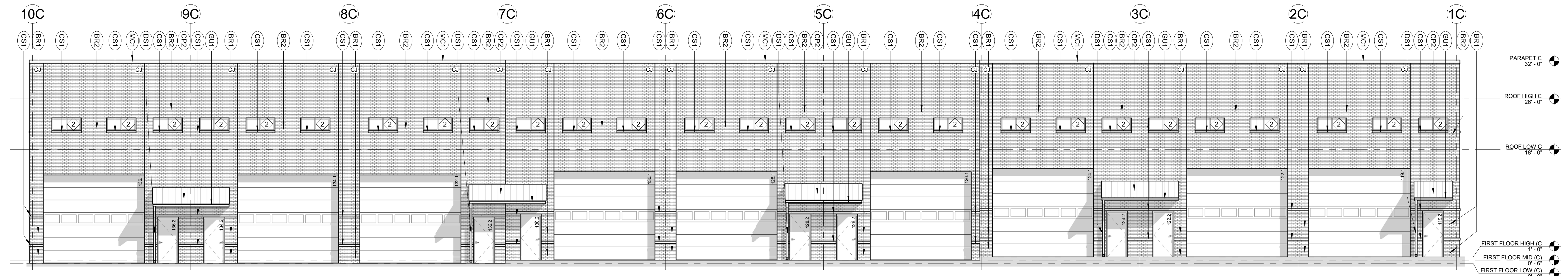
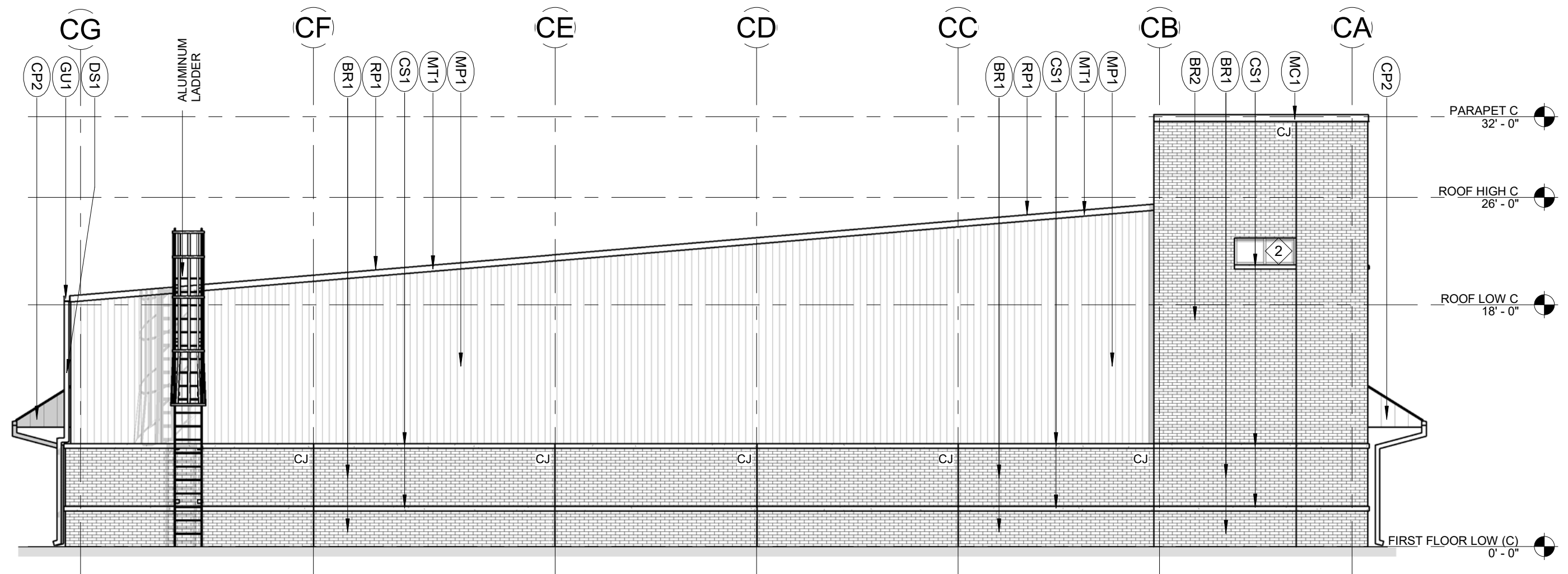


**EXTERIOR FINISH SCHEDULE**

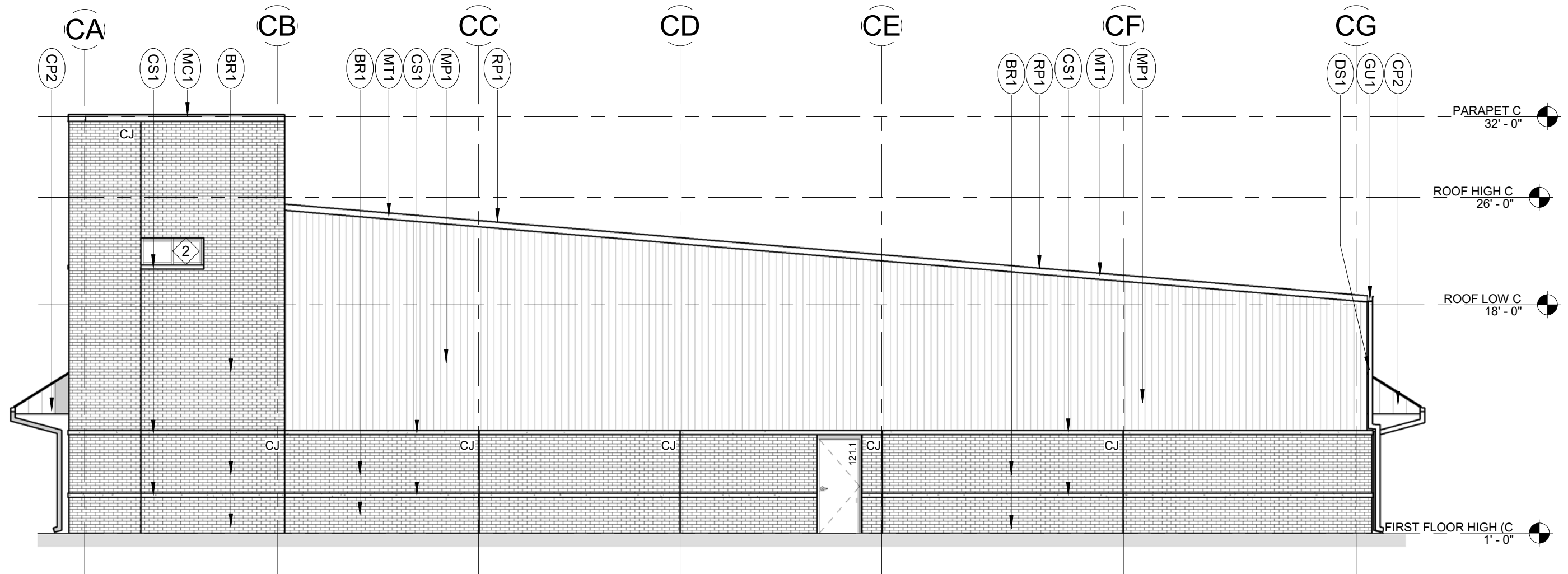
MARK	DESCRIPTION	COMMENT
BR1	FIELD BRICK; RUNNING BOND; RE: SPEC	
BR2	FIELD BRICK; RUNNING BOND; RE: SPEC	
CP1	PRE-FINISHED ALUMINUM CANOPY RE: 7/A502	
CP2	PRE-FINISHED ALUMINUM CANOPY RE: 8/A502	
CS1	CAST STONE SILL; RE: SPEC	
CS2	CAST STONE CAP; RE: SPEC	
DS1	PRE-FINISHED METAL DOWNSPOUT; COLOR TO MATCH MP1	
GU1	PRE-FINISHED METAL GUTTER; COLOR TO MATCH MP1	
MC1	PRE-FINISHED METAL COPING CAP; COLOR TO MATCH BR1	
MC2	PRE-FINISHED METAL COPING CAP; COLOR TO MATCH MP1	
MP1	PRE-FINISHED METAL PANEL; TYPE AND COLOR TBD	
MT1	PRE-FINISHED METAL TRIM; COLOR TO MATCH MP1	
RP1	PRE-FINISHED METAL ROOF PANEL; TYPE AND COLOR TBD	



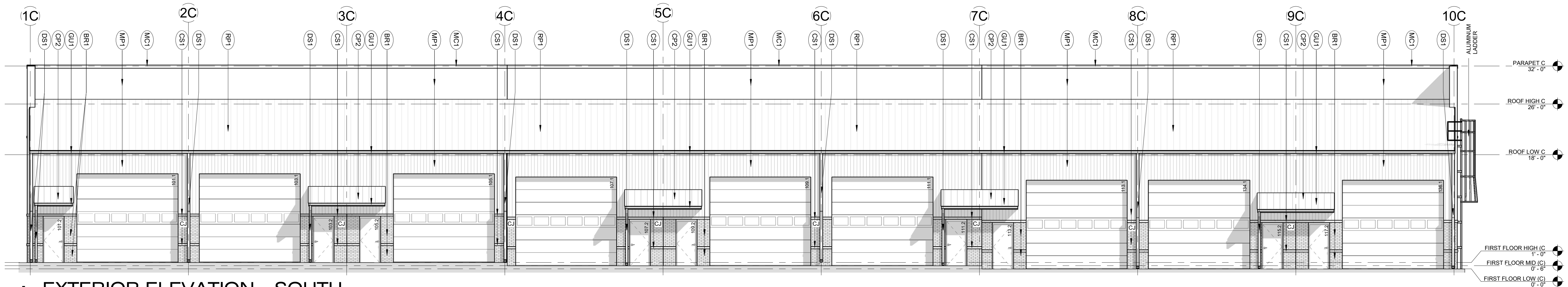
**4 EXTERIOR ELEVATION - NORTH**  
1/8" = 1'-0"



**2 EXTERIOR ELEVATION - EAST**  
1/8" = 1'-0"



**3 EXTERIOR ELEVATION - WEST**  
1/8" = 1'-0"



**1 EXTERIOR ELEVATION - SOUTH**  
1/8" = 1'-0"

**ET&T LAND HOLDINGS, LLC**  
**MAMMOTH LUXURY GARAGE CONDOS**

NEC W 166TH ST S. & S. BROADWAY AVE.  
GLENPOOL, OKLAHOMA

King+Davis Architects

201 South Main Street  
Suite 207  
Owasso, Oklahoma 74055  
918.376.3113  
www.k-darchitects.com

ISSUE DATE: 2020.06.02

REVISIONS:

EXTERIOR ELEVATIONS -  
BUILDING C

**A201C**