

savills

CITY OF MUSTANG RIDGE

The Ridge Commercial Park

8600 MAHA CT, BUDA, TX 78610

PROPERTY PROFILE

2.5 - 18.5 Acres
Available Acreage

Contact Broker
Pricing

**Office
Industrial
Retail**
Potential Use



Highlights

- Fronting on Hwy 183 & 130 Tollway with great visibility
- Part of a 50 acre commercial park
- Private 30 ft concrete road
- 8 inch waterline
- Private water boxes ready for meters at each individual parcel
- Detention in place
- City of Mustang Ridge Jurisdiction
- Each lot has a private address

2.5 - 18.5

ACRES



CITY OF MUSTANG RIDGE

2.5 - 18.5

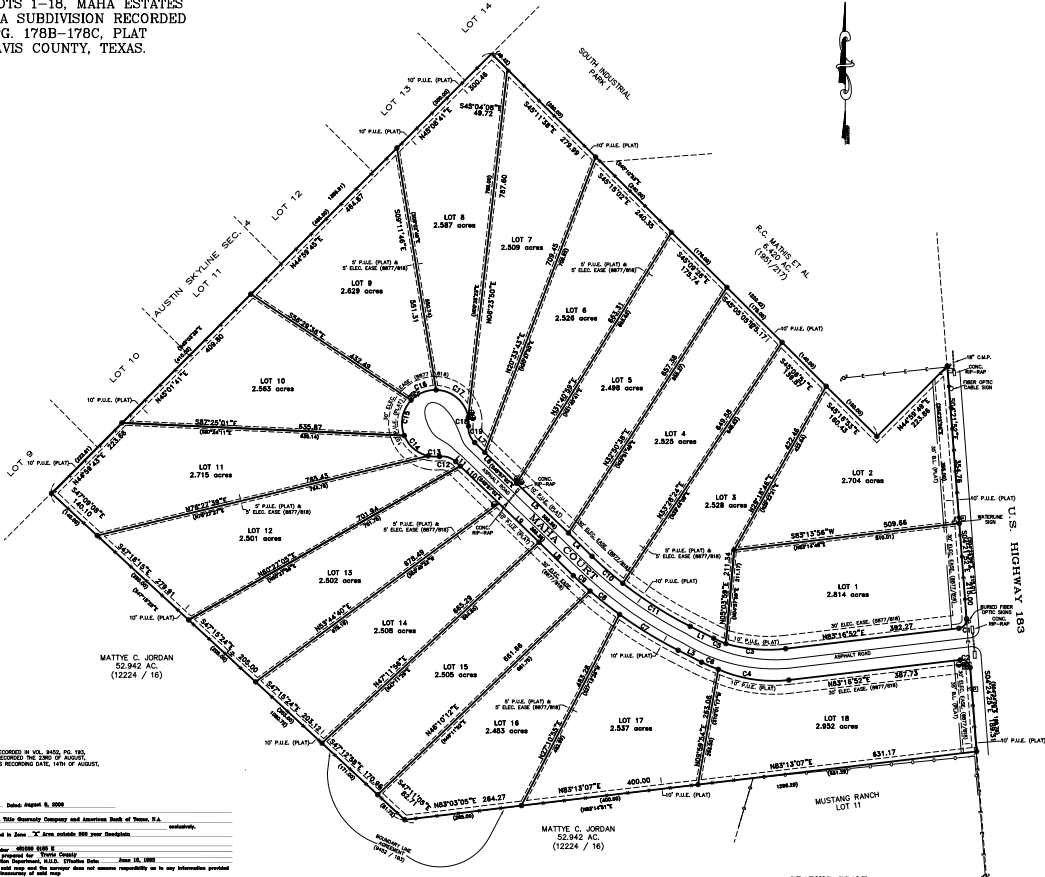
ACRES



THE RIDGE



SURVEY OF LOTS 1-18, MAHA ESTATES SUBDIVISION, A SUBDIVISION RECORDED IN VOL. 84, PG. 178B-178C, PLAT RECORDS, TRAVIS COUNTY, TEXAS.



CURVE	RADIUS	LENGTH	CHORD
C1	20.00	30.54	27.87
C2	20.00	31.75	28.57
C3	153.88	176.76	154.84
C4	509.21	182.30	180.43
C5	258.85	25.16	251.41
C6	243.83	40.95	40.92
C7	980.00	154.81	154.44
C8	980.00	84.75	84.72
C9	980.00	51.03	51.03
C10	900.00	82.09	82.05
C11	900.00	160.15	178.85
C12	48.00	39.78	38.46
C13	75.00	25.48	25.54
C14	75.00	25.48	25.54
C15	75.00	68.37	81.00
C16	75.00	83.81	80.80
C17	75.00	103.84	85.05
C18	75.00	18.75	18.70
C19	45.00	41.10	39.66

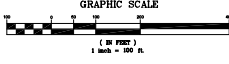
CURVE	RADIUS	LENGTH	CHORD	CHORD BEARING
C1	20.00	30.54	27.87	S89°12'00"W
C2	20.00	31.75	28.57	S89°12'00"W
C3	153.88	176.76	154.84	S89°12'00"W
C4	509.21	182.30	180.43	S89°12'00"W
C5	258.85	25.16	251.41	S89°12'00"W
C6	243.83	40.95	40.92	S89°12'00"W
C7	980.00	154.81	154.44	S89°12'00"W
C8	980.00	84.75	84.72	S89°12'00"W
C9	980.00	51.03	51.03	S89°12'00"W
C10	900.00	82.09	82.05	S89°12'00"W
C11	900.00	160.15	178.85	S89°12'00"W
C12	48.00	39.78	38.46	S89°12'00"W
C13	75.00	25.48	25.54	S89°12'00"W
C14	75.00	25.48	25.54	S89°12'00"W
C15	75.00	68.37	81.00	S89°12'00"W
C16	75.00	83.81	80.80	S89°12'00"W
C17	75.00	103.84	85.05	S89°12'00"W
C18	75.00	18.75	18.70	S89°12'00"W
C19	45.00	41.10	39.66	S89°12'00"W

LINE	BEARING	LENGTH
L1	S89°12'00"W	58.15
L2	S89°12'00"W	100.72
L3	S89°12'00"W	59.21
L4	S89°12'00"W	15.86
L5	S89°12'00"W	181.42
L6	S89°12'00"W	85.83
L7	S89°12'00"W	31.88
L8	S89°12'00"W	107.84
L9	S89°12'00"W	132.36
L10	S89°12'00"W	131.00
L11	S89°12'00"W	14.00

LINE	BEARING	LENGTH
L1	S89°12'00"W	58.15
L2	S89°12'00"W	100.72
L3	S89°12'00"W	59.21
L4	S89°12'00"W	15.86
L5	S89°12'00"W	181.42
L6	S89°12'00"W	85.83
L7	S89°12'00"W	31.88
L8	S89°12'00"W	107.84
L9	S89°12'00"W	132.36
L10	S89°12'00"W	131.00
L11	S89°12'00"W	14.00

NOTES: 1) PRELIMINARY LINE AGREEMENT RECORDED IN VOL. 840, PG. 103. 2) ALL PROPERTY RECORDS WAS RECORDED THE 28th OF AUGUST, 1985, WHICH IS AFTER THE PLAT'S RECORDING DATE, 14th OF AUGUST, 1985.

S.E. of 34th... Date: August 6, 2008
 Mattie C. Jordan
 52,842 AC.
 (12224 / 16)



MAHA ESTATES SUBDIVISION
 DATE: Sept. 25, 2008 JOB NO. 06_819
 SCALE: 1" = 100' DWG NO. 06_819

Hudson Hall
 T: 512 431 8244
 hhall@savills.us

Information contained herein has been obtained from sources deemed reliable. While we believe this information to be true, Savills makes no guarantee, warranties or representations as to the completeness or accuracy thereof. All information submitted is subject to errors and/or omissions.

