



RCB  
DEVELOPMENT

# 7410 NORTHSIDE DRIVE

North Charleston, SC 29420

**FOR LEASE**

Suites ranging from 2,441 to 5,517 SF



# BUILDING HIGHLIGHTS



Brand new spec suites now available

Newly renovated facade, lobby and common area

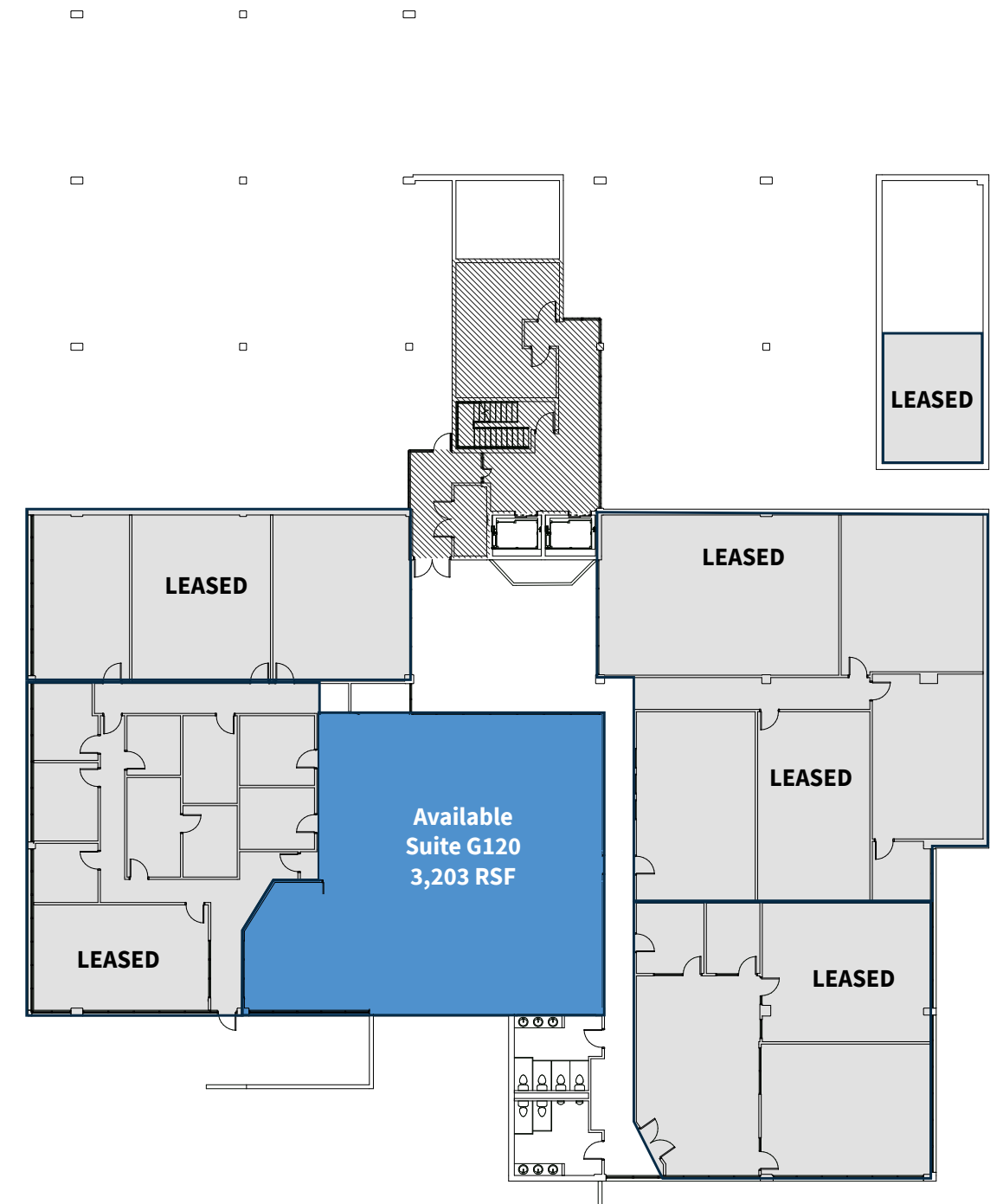
Parking 3.00/1,000 RSF

Convenient access to I-26 via Ashley Phosphate Road - Exit 209



# FLOOR PLANS

## GROUND FLOOR



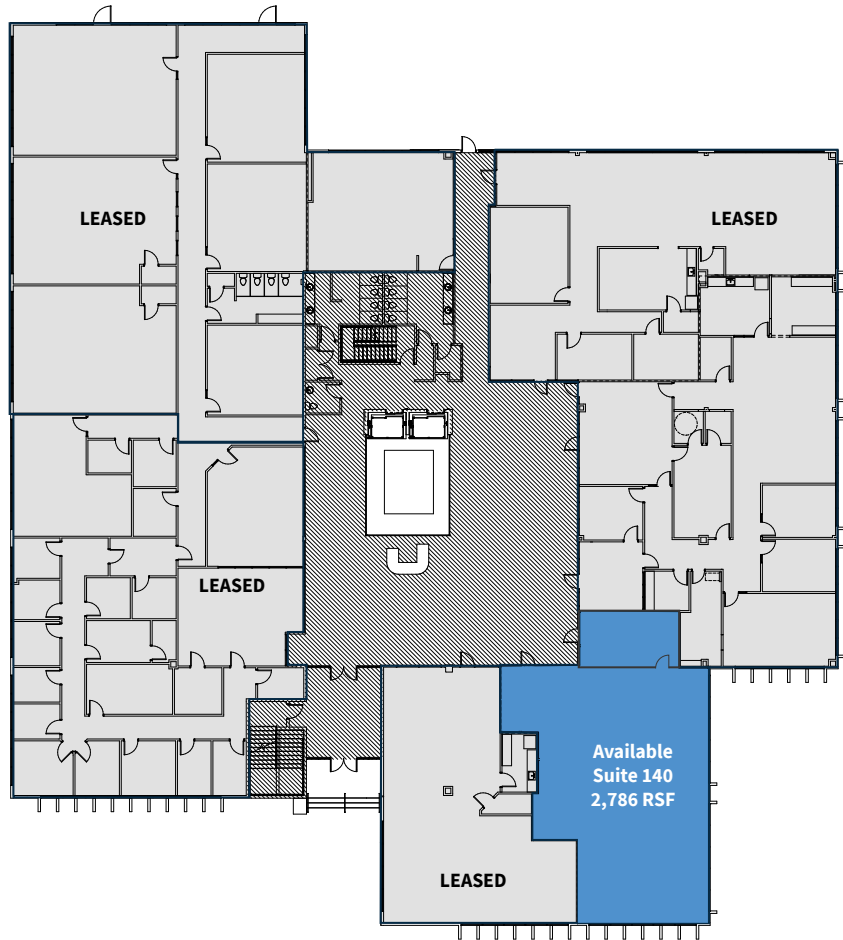
Suite G120

3,203 RSF



# FLOOR PLANS

## FIRST FLOOR



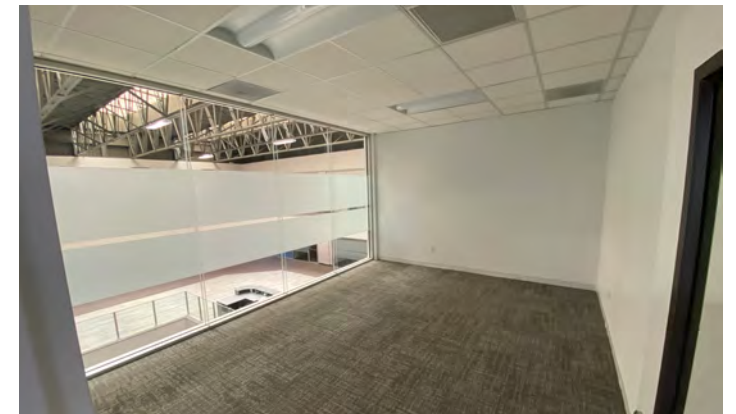
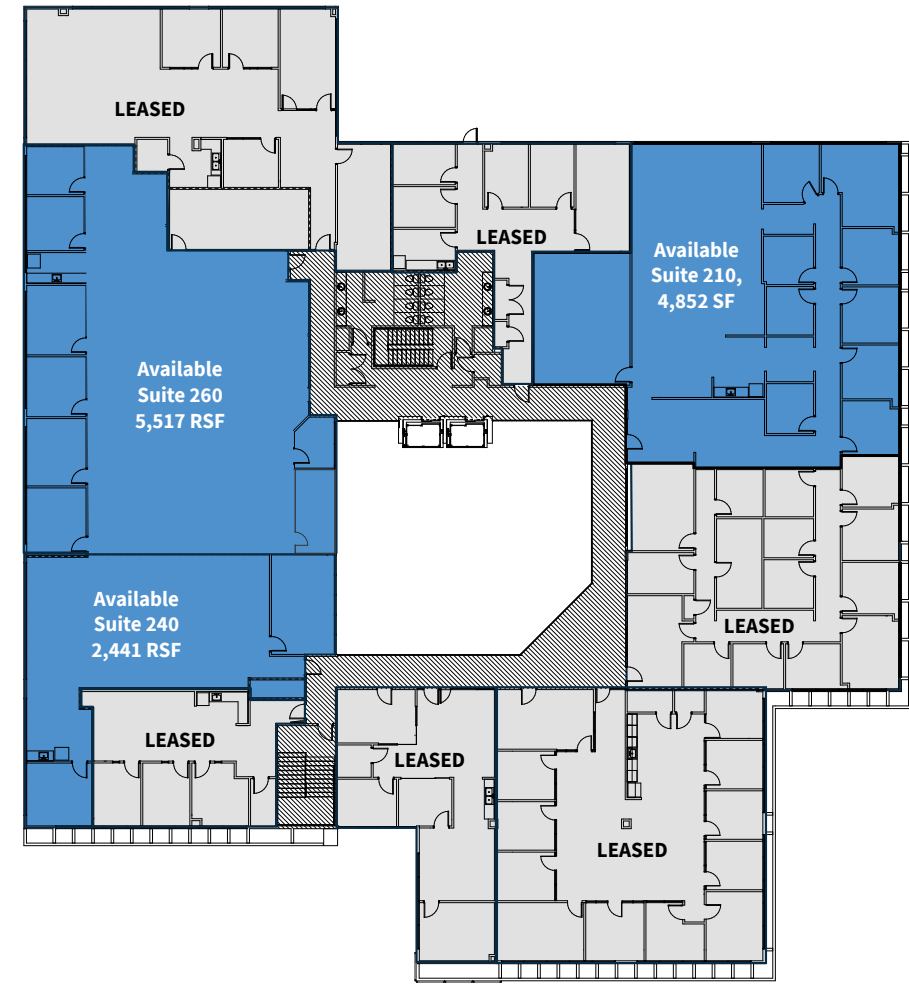
### SUITE 140 IMPROVEMENTS

- New LED lights | New ceiling tiles and grid |
- New carpet tiles | Newly painted |
- Upgraded HVAC

**Suite 140** 2,786 RSF

# FLOOR PLANS

## SECOND FLOOR



### SUITE 260 IMPROVEMENTS

- New LED lights | New ceiling tiles and grid |
- New carpet tiles | Newly painted |
- Upgraded HVAC

**Suite 260** 5,517 RSF

**Suite 210** 4,852 SF

**Suite 240** 2,441 SF



## ACCESS & AMENITIES



**7410 NORTHSIDE DRIVE**  
North Charleston, SC 29420

### Food and Beverage

- 1 Ruby Tuesday
- 2 McDonald's
- 3 Waffle House
- 4 Los Parados
- 5 Taco Bell
- 6 Wendy's
- 7 Denny's
- 8 Penalty Box Sports Lounge
- 9 Mei Thai Restaurant & Sushi Bar
- 10 Olive Garden
- 11 Outback Steakhouse
- 12 Chik-fil-A
- 13 Pizza Hut
- 14 Jimmy John's

- 15 Chipotle Mexican Grill
- 16 Starbucks (1)
- 17 Panera Bread
- 18 Panda Express
- 19 Chuck E. Cheese's
- 20 Starbucks (2)
- 21 LongHorn Steakhouse
- 22 Cold Stone Creamery
- 23 Firehouse Subs
- 24 Smokey Bones Bar & Fire Grill

### Education

- 1 ECPI University
- 2 Trident Technical College

### Hotel & Lodging

- 1 SpringHill Suites by Marriott
- 2 Fairfield Inn & Suites by Marriott
- 3 Hyatt Place North Charleston
- 4 DoubleTree by Hilton Hotel
- 5 Holiday Inn Express & Suites

### Retail

- 1 Lowe's
- 2 The Home Depot
- 3 Northwoods Mall
- 4 Barnes & Noble
- 5 Best Buy
- 6 Walmart Supercenter
- 7 Target
- 8 North Rivers Town Center

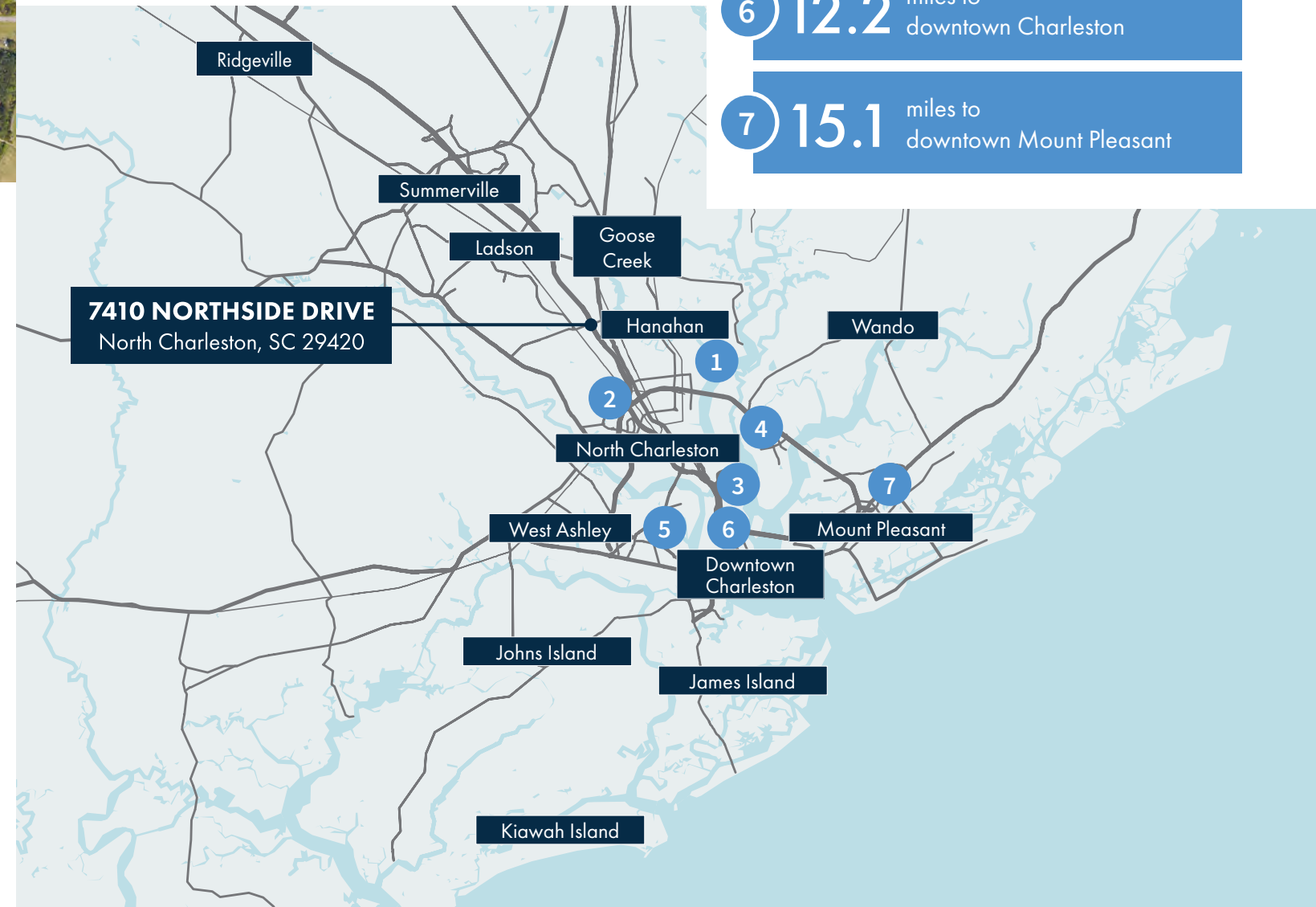
## LOCATION

### LOCATION OVERVIEW

7410 Northside Drive is located in North Charleston just 0.2 miles from I-26. The property is in close proximity to major population bases; downtown, North Charleston, Daniel Island, Mount Pleasant and West Ashley. Accessible via either I-26 or Rivers Avenue, 7410 Northside Drive is connected to the area's major arterial roadways serving a logistical advantage for both businesses and their employees.

Another location attribute to the property is its close proximity to the commercial districts of North Charleston. Specifically, 7410 Northside Drive is proximate to North Charleston's North Pointe Plaza, North Rivers Town Center, Northwoods Mall, Trident Technical College and numerous apartment complexes. Recognized as one of Charleston's up-and-coming areas, North Charleston draws both residents, businesses and employees alike.

- 1 **5.6** miles to North Charleston Port Terminal
- 2 **7.2** miles to the Charleston International Airport
- 3 **8.3** miles to the new Hugh Leatherman Terminal
- 4 **10.0** miles to Daniel Island
- 5 **10.6** miles to downtown West Ashley
- 6 **12.2** miles to downtown Charleston
- 7 **15.1** miles to downtown Mount Pleasant



**7410 NORTHSIDE DRIVE**  
North Charleston, SC 29420





For more information, contact:

**Brian Connolly**

+1 202.316.4846

[brian.connolly@jll.com](mailto:brian.connolly@jll.com)

Although information has been obtained from sources deemed reliable, JLL does not make any guarantees, warranties or representations, express or implied, as to the completeness or accuracy as to the information contained herein. Any projections, opinions, assumptions or estimates used are for example only. There may be differences between projected and actual results, and those differences may be material. JLL does not accept any liability for any loss or damage suffered by any party resulting from reliance on this information. If the recipient of this information has signed a confidentiality agreement with JLL regarding this matter, this information is subject to the terms of that agreement. ©2025. Jones Lang LaSalle IP, Inc. All rights reserved.

