

SAHARA RANCHO

2200 - 2250 S. RANCHO DR | LAS VEGAS, NV 89102

FOR LEASE

CBRE

PROPERTY HIGHLIGHTS

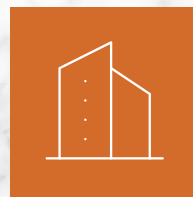
The Sahara Rancho Corporate Center is a five-building campus totaling approximately $\pm 115,329$ SF of Class B office space and $\pm 15,253$ SF of supporting retail. It is strategically located in the west submarket directly adjacent to the I-15 Freeway off of the Sahara Avenue and Rancho Drive interchange.

This asset offers its tenants an impressive cutting-edge office environment with great exposure and high visibility, flexible floor plans, covered parking and ease of access to all major destination points in the Las Vegas valley.



AVAILABLE SUITES

BUILDING	SUITE	SF
2200	Suite 110	$\pm 2,032$ RSF
2200	Suite 130	$\pm 2,407$ RSF
2200	Suite 130A	$\pm 2,408$ RSF
2250	Suite 140	$\pm 1,744$ RSF
2250	Suite 155	$\pm 4,999$ RSF
2250	Suite 295	$\pm 12,754$ RSF



AVAILABLE RSF

$\pm 1,744 - \pm 12,754$



LEASE RATE

$\$2.30$ PSF/MONTH FSC

PROPERTY OVERVIEW

PROPERTY NAME: Sahara Rancho Corporate Center

ADDRESS: 2200-2250 S. Rancho Dr.

PARCEL NUMBER: 162-04-412-013, 012

YEAR BUILT: 1980 & 2004

BUILDING SIZE: ±115,329 SF

LAND SIZE: ±9.12 Acres (Office Portion)

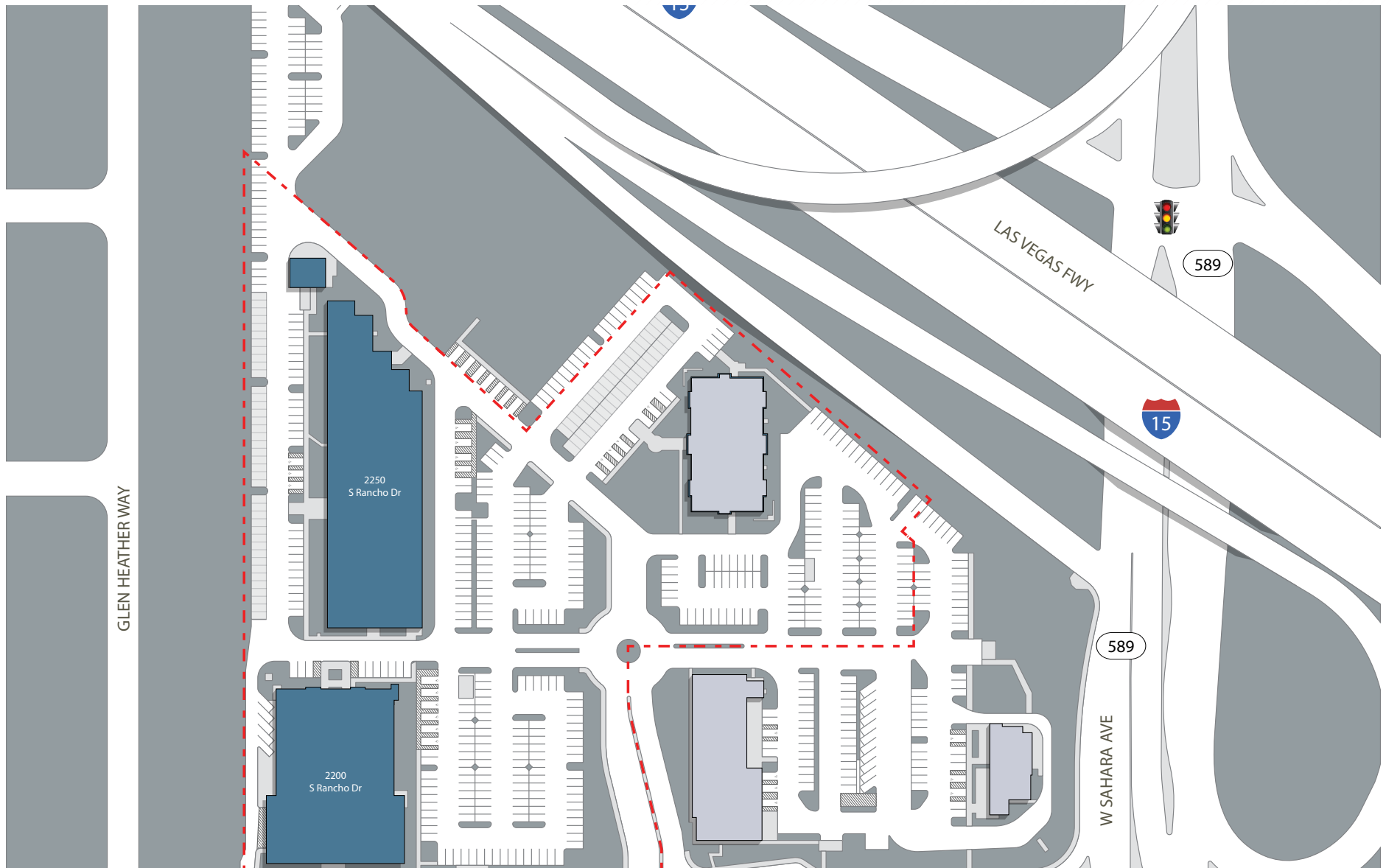
PARKING: Surface and Covered Parking

SIGNAGE: Building signage available

ZONING: C-1 (Commercial District)



SITE PLAN

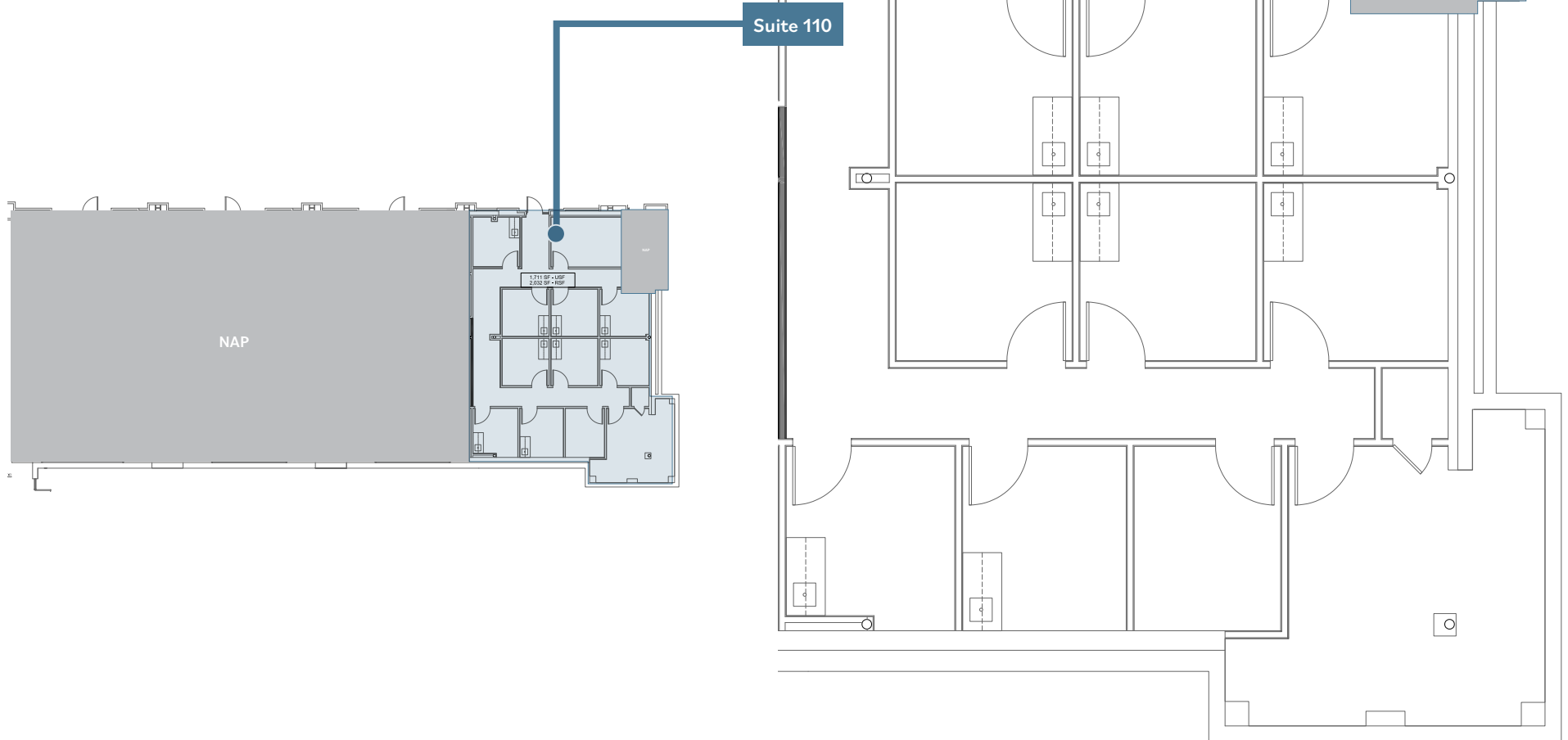


FLOOR PLANS

SUITE 110 2200 S. Rancho Drive

Square Footage: ±2,032 RSF

Lease Rate: \$2.30 PSF / Month FSC



FLOOR PLANS

SUITES 130A & 130 2200 S. Rancho Drive

Suite 130A | Square Footage: ±2,408 RSF

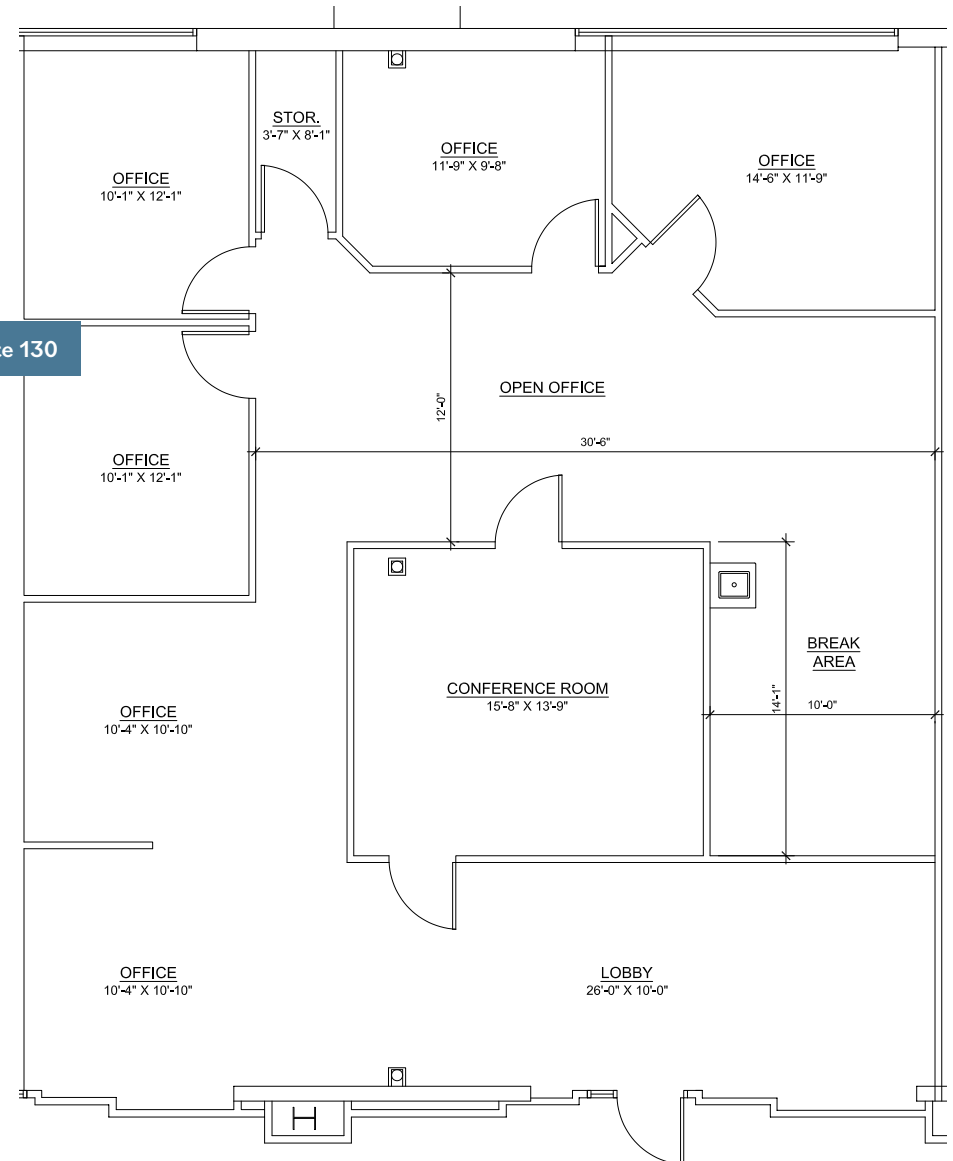
Lease Rate: \$2.30 PSF / Month FSG

Suite 130 | Square Footage: ±2,407 RSF

Lease Rate: \$2.30 PSF/ Month FSG



Suite 130

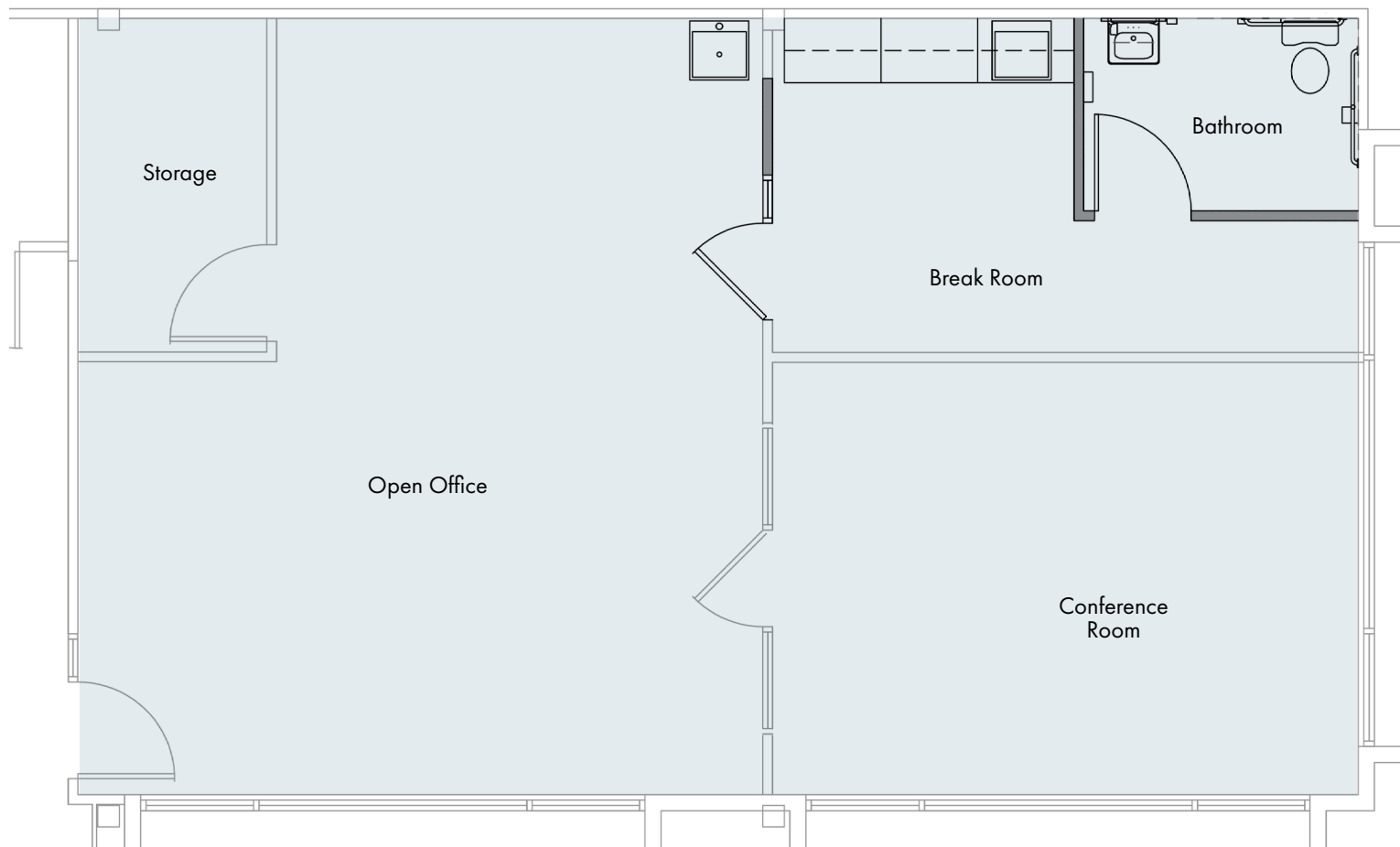


FLOOR PLANS

SUITE 140 2250 S. Rancho Drive

Suite 140 | Square Footage: $\pm 1,744$ RSF

Lease Rate: \$2.30 PSF / Month FSG



FLOOR PLANS

SUITE 155 2250 S. Rancho Drive

Suite 155 | Square Footage: $\pm 4,999$ RSF

Lease Rate: \$2.30 PSF / Month FSG



FLOOR PLANS

SUITE 295 2250 S. Rancho Drive

Square Footage: ±12,754 RSF

Lease Rate: \$2.30 PSF / Month FSG



AMENITY MAP



MARKET SNAPSHOT

Las Vegas, NV is a vibrant and bustling city known for a tourism, entertainment, strong economy and highly-skilled workforce. Las Vegas attracts millions of tourists each year and is home to iconic landmarks such as the Las Vegas Strip, where visitors can enjoy luxurious resorts, extravagant shows, and endless dining and shopping options. Las Vegas also offers a variety of other recreation options, including hiking in nearby Red Rock Canyon, exploring the Hoover Dam, catching a major league game and taking scenic helicopter tours of the Grand Canyon. Las Vegas is a thriving community with both urban and rural locals.

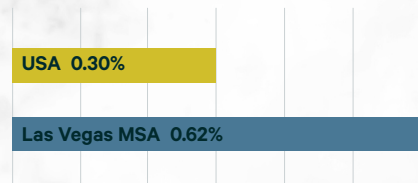
LAS VEGAS MSA POPULATION
2,359,915

MEDIAN AGE

Nevada 37.4 years
U.S. 39.1 years

Source: ESRI (2023)

% ANNUAL POPULATION GROWTH (2023 - 2028)



SMART & DIVERSE WORKFORCE

Las Vegas has a diverse, educated and highly-skilled workforce and has experienced an influx in in-migration, as individuals seek a market that offers low cost of living and direct access to recreation, entertainment and culture.

WORKFORCE



Source: U.S. Bureau of Labor Statistics

EDUCATION ATTAINMENT

Associates Degree	9.6%
Bachelor's Degree	28.4%

Source: ESRI (2023)

CONSISTENT LEVELS OF IN-MIGRATION



2023: 16.35% Increase

5-year Forecast: 20.19% Increase

Source: Oxford Economics

CLARK COUNTY POPULATION 2023 PRIMARY REASONS FOR MOVING TO NEVADA

Family (30%)
Job (20%)
Retirement (19%)
Lifestyle (14%)
Cost (5%)
Health (2%)



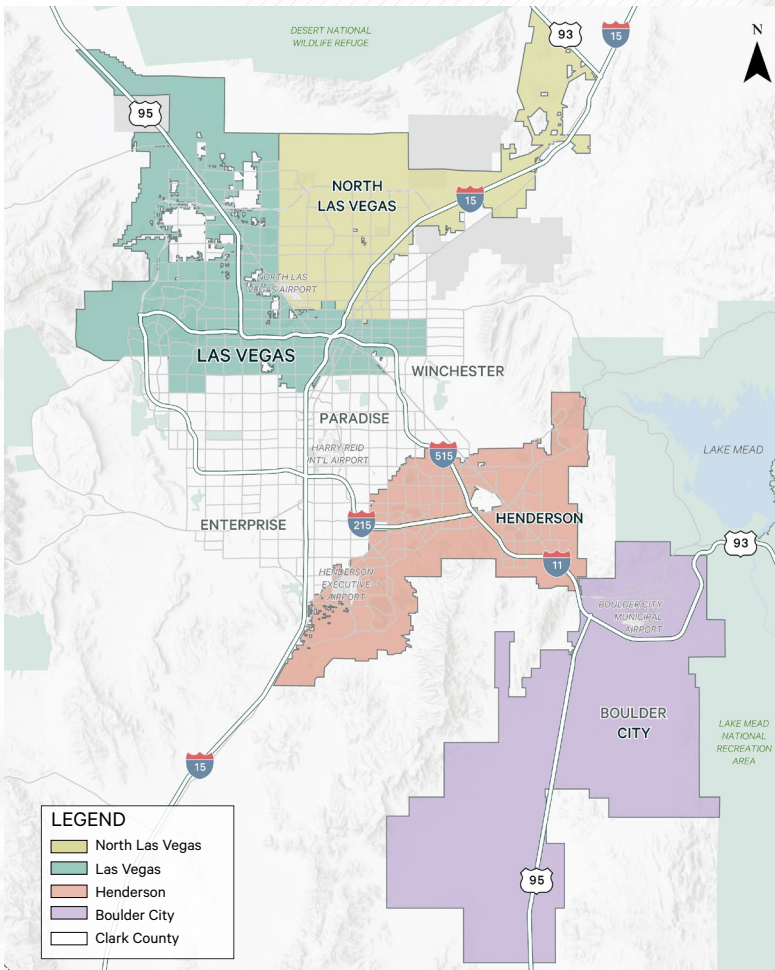
LAS VEGAS BY THE NUMBERS

we're #1!

- Las Vegas - top travel destination for Americans (Family Destinations Guide, 2023)
- Las Vegas - top destination for relocating homeowners (Redfin, 2023)
- Nevada - job growth (U.S. Bureau of Labor Statistics, 2023)
- UNLV most diverse university for undergraduates (U.S. News & World Report, 2021)

notable accolades

- #2 Nevada's population growth U.S. ranking (U.S. Census Bureau, 2020)
- #7 State Business Climate Index (Tax Foundation, 2023)
- #8 Best state to start a business (Wallethub, 2023)
- #8 Quality of infrastructure - Nevada (U.S. News & World Report, 2023)

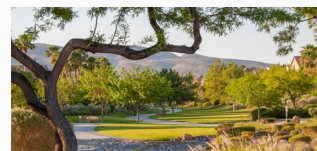


OVERALL LAS VEGAS STATISTICAL AREA



Las Vegas MSA (Clark County)

Population:	2,359,915
Average Home Value:	\$443,826
2023 Households:	887,830
2023-28 Household Growth Rate:	0.85%
Average Household Income:	\$95,984



Las Vegas

Population:	649,600
Average Home Value:	\$395,599
2022 Households:	245,377
2022-27 HH Growth Rate:	0.53%
Average Household Income:	\$95,568

Henderson

Population:	331,701
Average Home Value:	\$425,265
2022 Households:	133,081
2022-27 HH Growth Rate:	0.72%
Average Household Income:	\$120,902

North Las Vegas

Population:	276,199
Average Home Value:	\$333,561
2022 Households:	87,265
2022-27 HH Growth Rate:	0.77%
Average Household Income:	\$88,028

Boulder City

Population:	14,946
Average Home Value:	\$395,513
2022 Households:	6,564
2022-27 HH Growth Rate:	0.10%
Average Household Income:	\$105,598

ENTERTAINMENT, DELIVERED

Las Vegas is a top global destination for entertainment, gaming, shopping and dining. We're home to 10 Michelin Star restaurants and a host of world-renowned museums.

RESTAURANTS + THEATERS

10

**Michelin Star
Restaurants**

The Smith Center for Performing Arts

UNLV Performing Arts Center

Zappos Theater Planet Hollywood

Park Theater at Park MGM Las Vegas

Pearl Theater

MAJOR SHOPPING DESTINATIONS

- Fashion Show Mall
- Crystals (City Center)
- Downtown Summerlin
- Forum Shops (Caesars Palace)
- Grand Canal Shops at the Venetian
- Galleria at Sunset
- Town Square
- Miracle Mile Shops at Planet Hollywood Resort

\$36.9 BILLION IN VISITOR SPENDING

LVCVA 2019

86 MUSEUMS IN LAS VEGAS

SELECT TOP MUSEUMS

- The Neon Museum
- Las Vegas Natural History Museum
- Discovery Children's Museum
- The Mob Museum
- Nevada State Museum
- Shelby American, Inc.
- Hollywood Car Museum

POPULAR NON-GAMING ATTRACTIONS

- Springs Preserve
- Las Vegas Philharmonic
- Henderson Symphony Orchestra
- Bellagio Gallery of Fine Art
- Las Vegas Arts District

PROFESSIONAL SPORTING EVENTS



NHL (Golden Knights)



AHL (Henderson Silver Knights)



NFL (Las Vegas Raiders)



NLL (Las Vegas Desert Dogs)



WNBA (Las Vegas Aces)



MILB (Las Vegas Aviators
Oakland A's affiliate)



USLC (Las Vegas Lights)

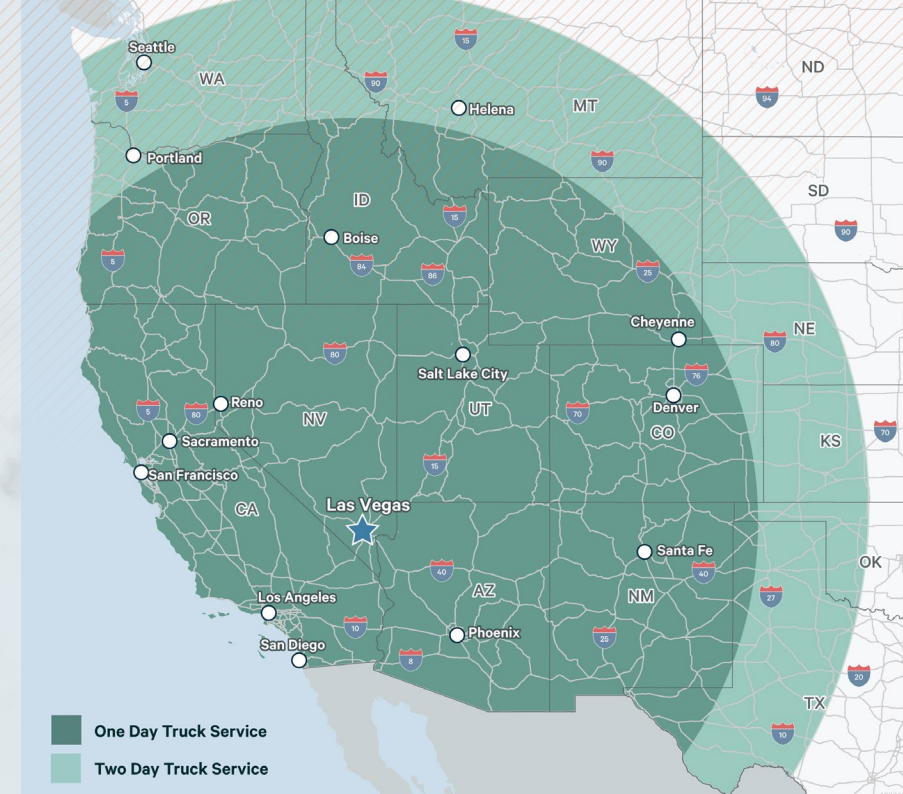
TRANSPORTATION INFRASTRUCTURE

Las Vegas has an robust transportation infrastructure that is comprised of three major highways: Interstate 15, U.S. 93/95, and the 215 Beltway. The highway system allows for easy shipping and receiving within a one or two day time frame to all major Western metros.

TRUCK SERVICE TO AND FROM LAS VEGAS

Travel to	Distance (mi)	Time (est.)
Los Angeles, CA	271	5:04
Phoenix, AZ	420	5:43
San Diego, CA	395	5:54
Salt Lake City, UT	340	6:23
Reno, NV	449	7:07
San Francisco, CA	638	9:23
Sacramento, CA	584	9:31

Travel to	Distance (mi)	Time (est.)
Boise, ID	662	10:12
Santa Fe, NM	571	10:37
Denver, CO	748	10:48
Cheyenne, WY	852	11:55
Helena, MT	900	12:50
Portland, OR	1,184	18:15
Seattle, WA	1,258	19:13



Source: ESRI

ONE OF THE NATION'S MOST TAX-FRIENDLY STATES

Las Vegas has low cost start-up, regulatory, licensing, annual fees, taxes and tax structure, privacy of business owners and competitive utility rates for commercial operations. Combine all of these benefits with quality of life, abundant recreation and entertainment options, strong workforce and affordable housing and Las Vegas is an easy choice.

The Tax Foundation
2022 State Business
Tax Climate Index ranks
Nevada #7 best state in
the U.S.

Source:
The Tax Foundation

7th





SAHARA RANCHO

2200 - 2250 S. RANCHO DR | LAS VEGAS, NV 89102

CONTACT US

Ryan Martin, SIOR, CCIM

Senior Vice President

T +1 702 630 2671

ryan.martin@cbre.com

License No. BS.0048284

Tonya Gottesman

Vice President

T +1 310 612 3592

tonya.gottesman@cbre.com

License No. S.0189043

© 2025 CBRE, Inc. All rights reserved. This information has been obtained from sources believed reliable, but has not been verified for accuracy or completeness. You should conduct a careful, independent investigation of the property and verify all information. Any reliance on this information is solely at your own risk. CBRE and the CBRE logo are service marks of CBRE, Inc. All other marks displayed on this document are the property of their respective owners, and the use of such logos does not imply any affiliation with or endorsement of CBRE. Photos herein are the property of their respective owners. Use of these images without the express written consent of the owner is prohibited.

