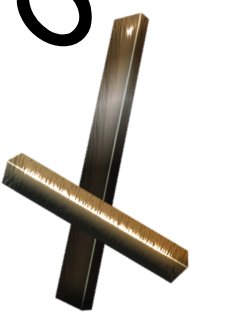


CrossBeam Design

Designer: Andrew Wengert

www.crossbeamdesign.com



541-990-1262

Applegate Project

1811-1817 Applegate St.
Philomath

Plan # 14443BD2b25- 3office1B X10 R 5/15/2023

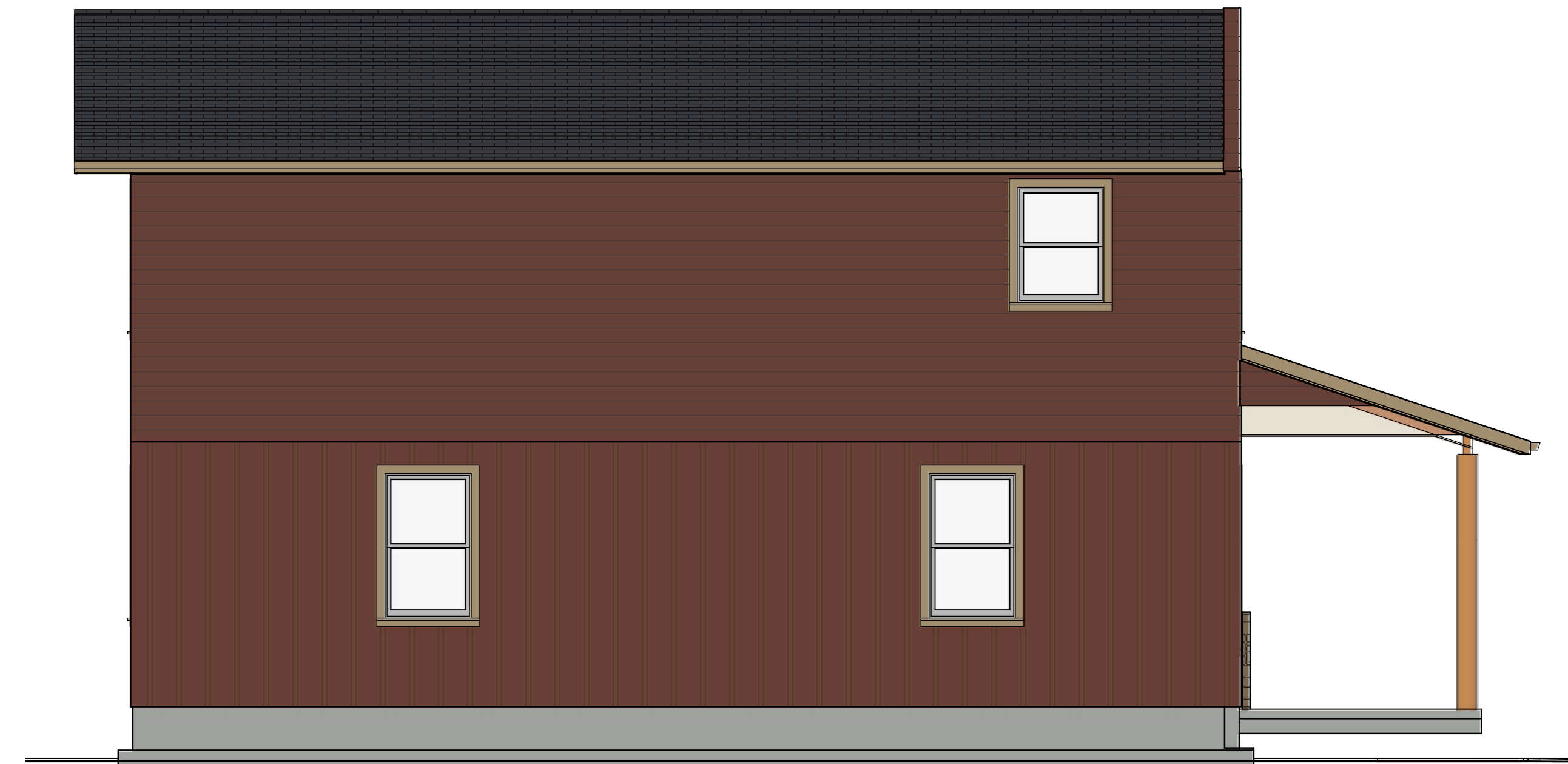
LIVING SPACE
OFFICE SQ. FT. 1302
2ND FLOOR SQ. FT. 1121

Note: All structural details may or may not conform with local building code. These details may need to be stamped by local building engineer for structural loads and bearings.

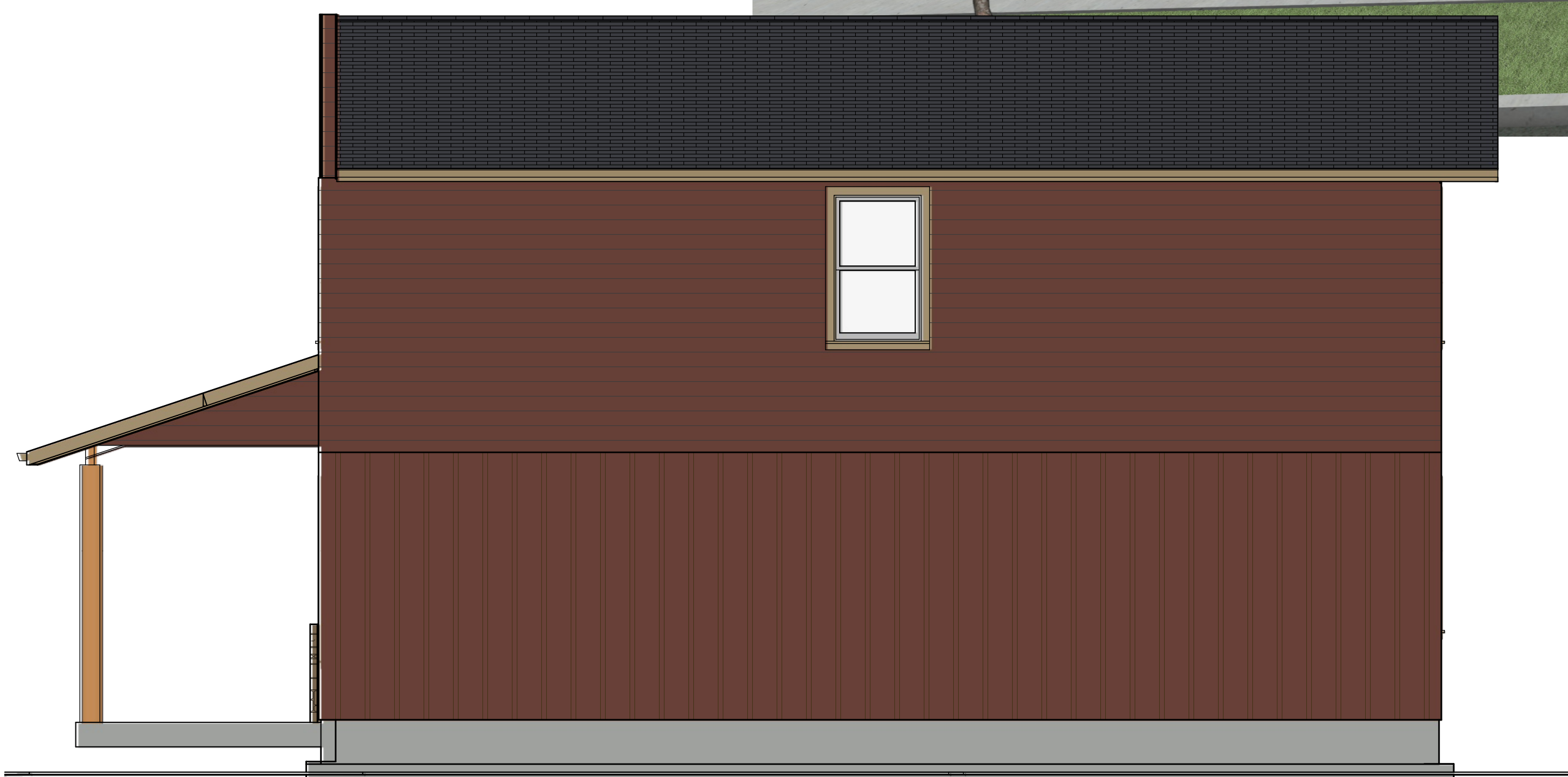
SCALE:
1/4"=1'



Exterior Elevation Front



Exterior Elevation Back Left

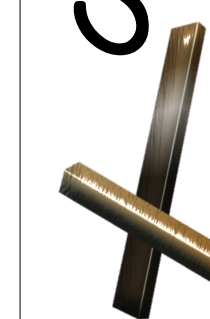


Exterior Elevation Right



Exterior Elevation Rear

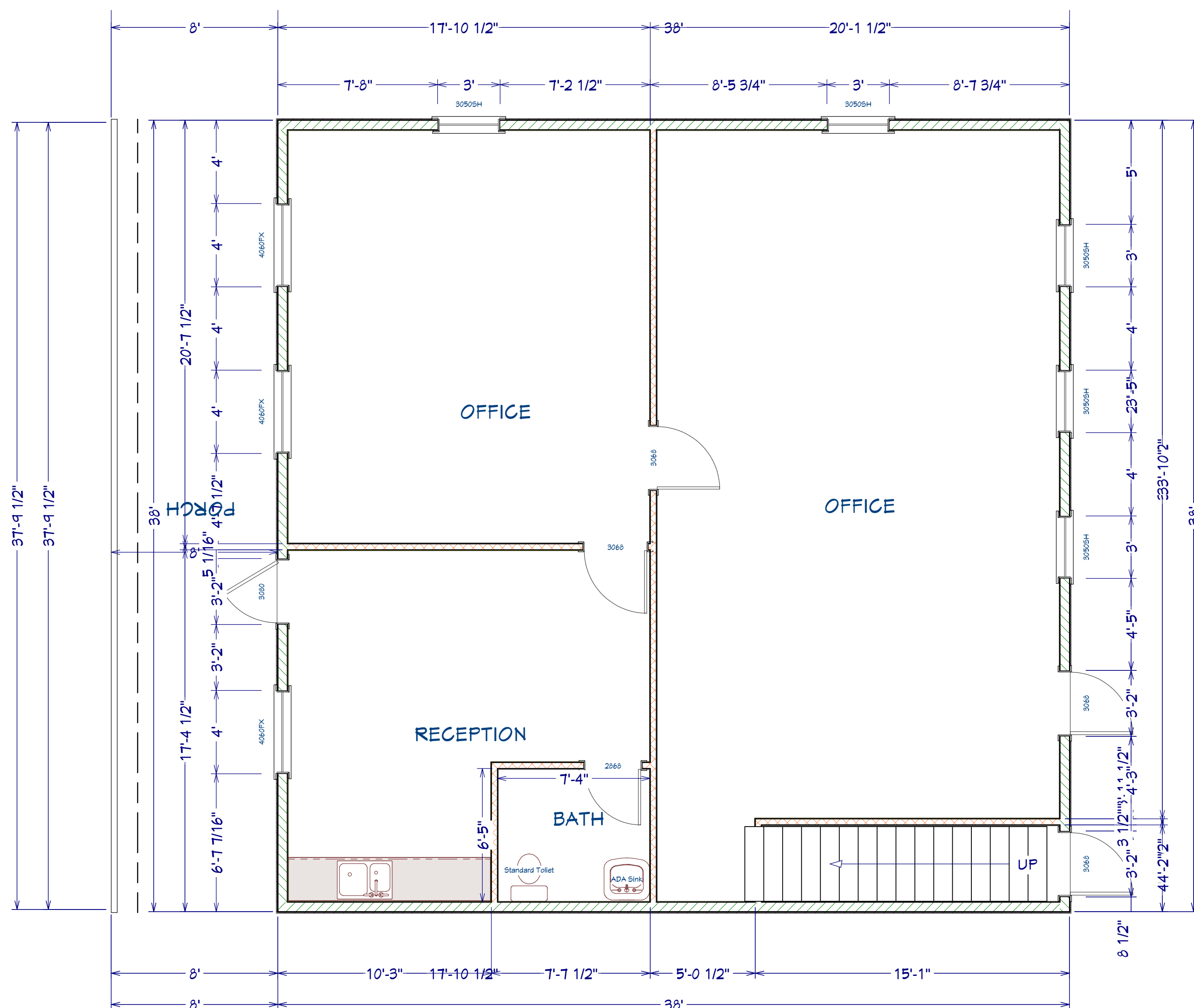
These drawings are the proprietary work product and property of CrossBeam Design LLC (CBD). Use of these drawings and concepts contained therein without the written permission of CBD is prohibited. Permission has been granted to client mentioned on drawings for one-time use only and intended location only.



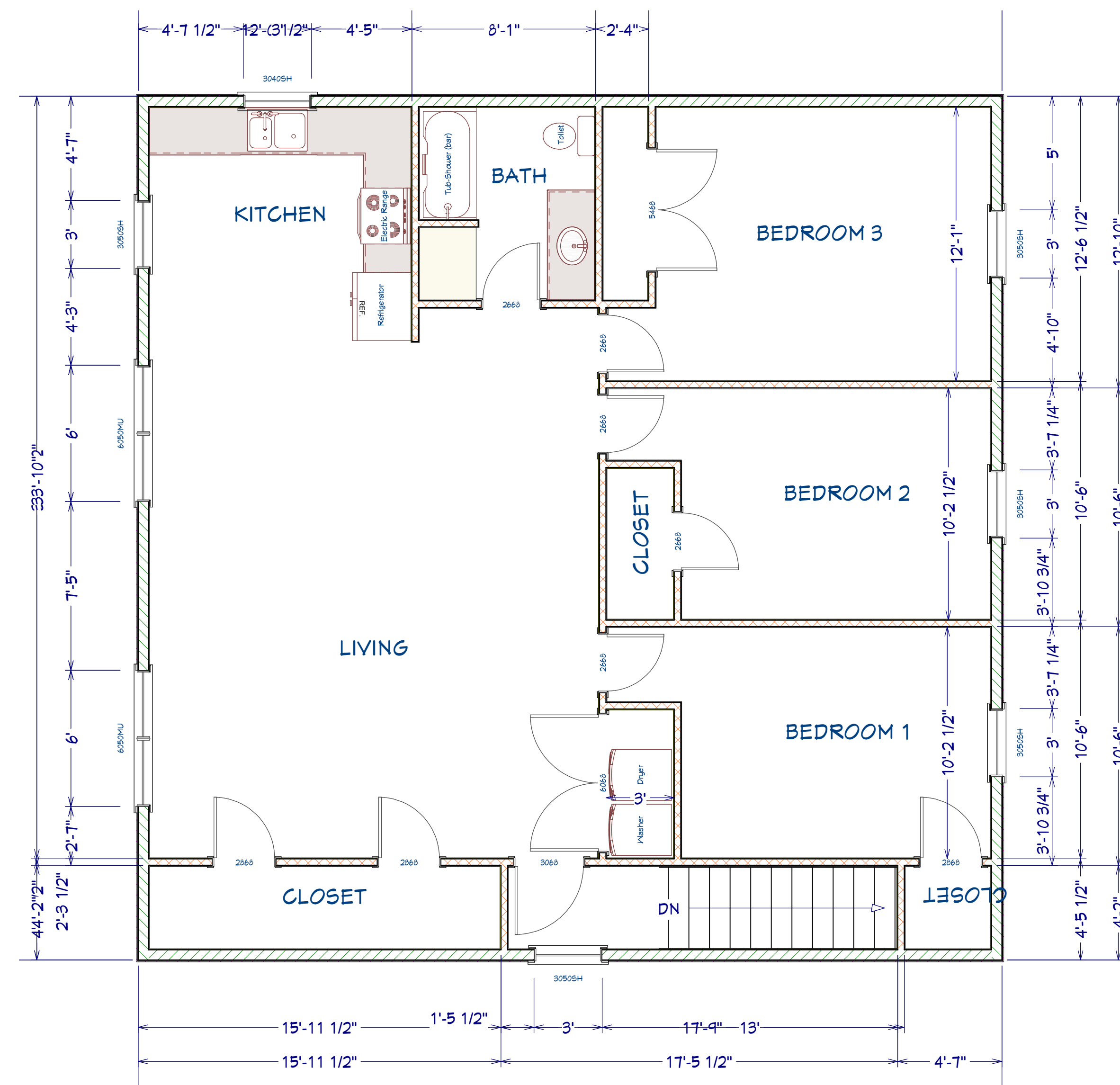
LIVING SPACE
OFFICE SQ. FT.
1302
2ND FLOOR SQ. FT.
1121

Note: All structural details may or may not conform with local building code. These details may need to be stamped by local building engineer for structural loads and bearings.

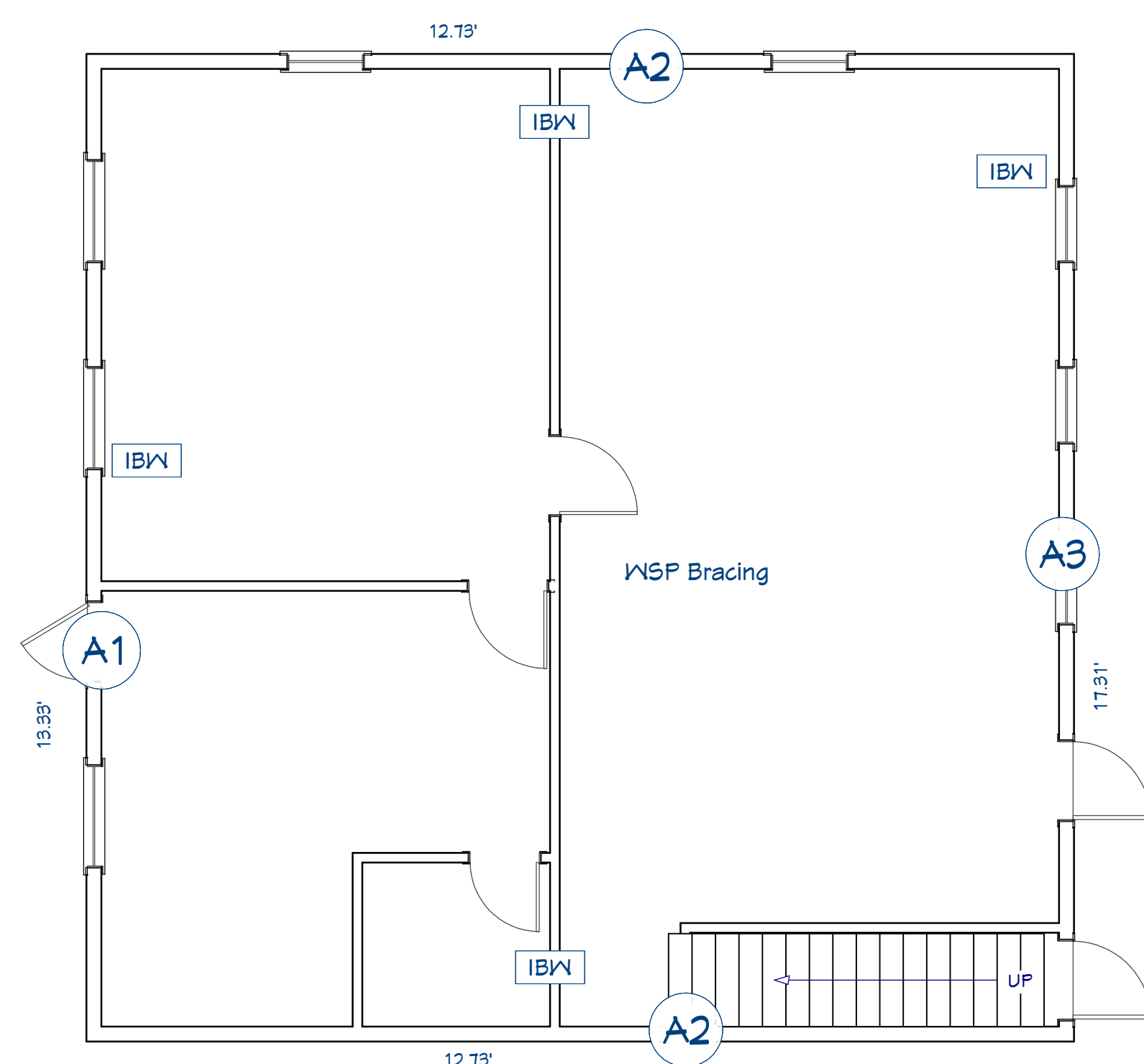
SCALE:
1/4"=1'



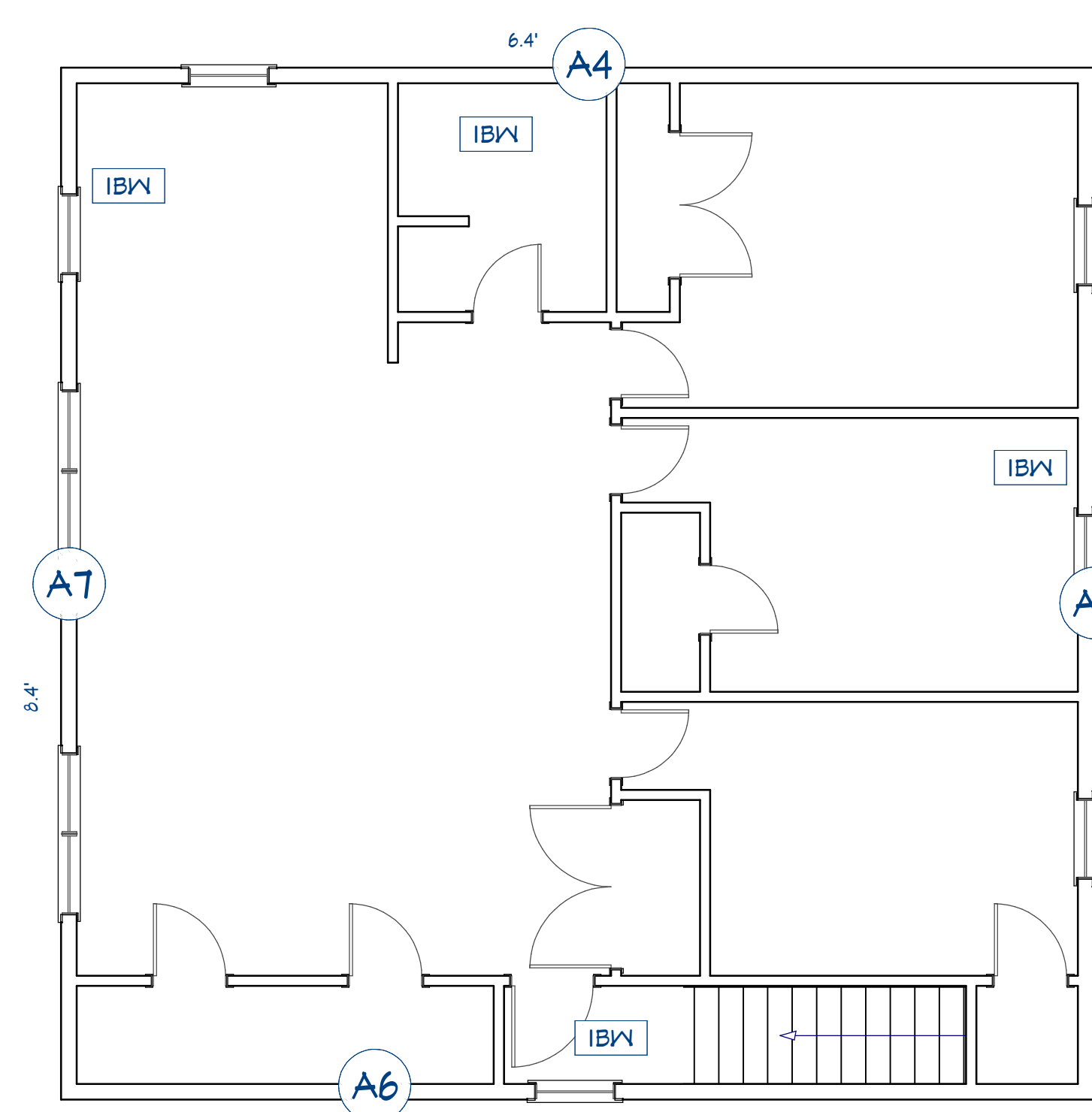
1st Floor



2nd Floor

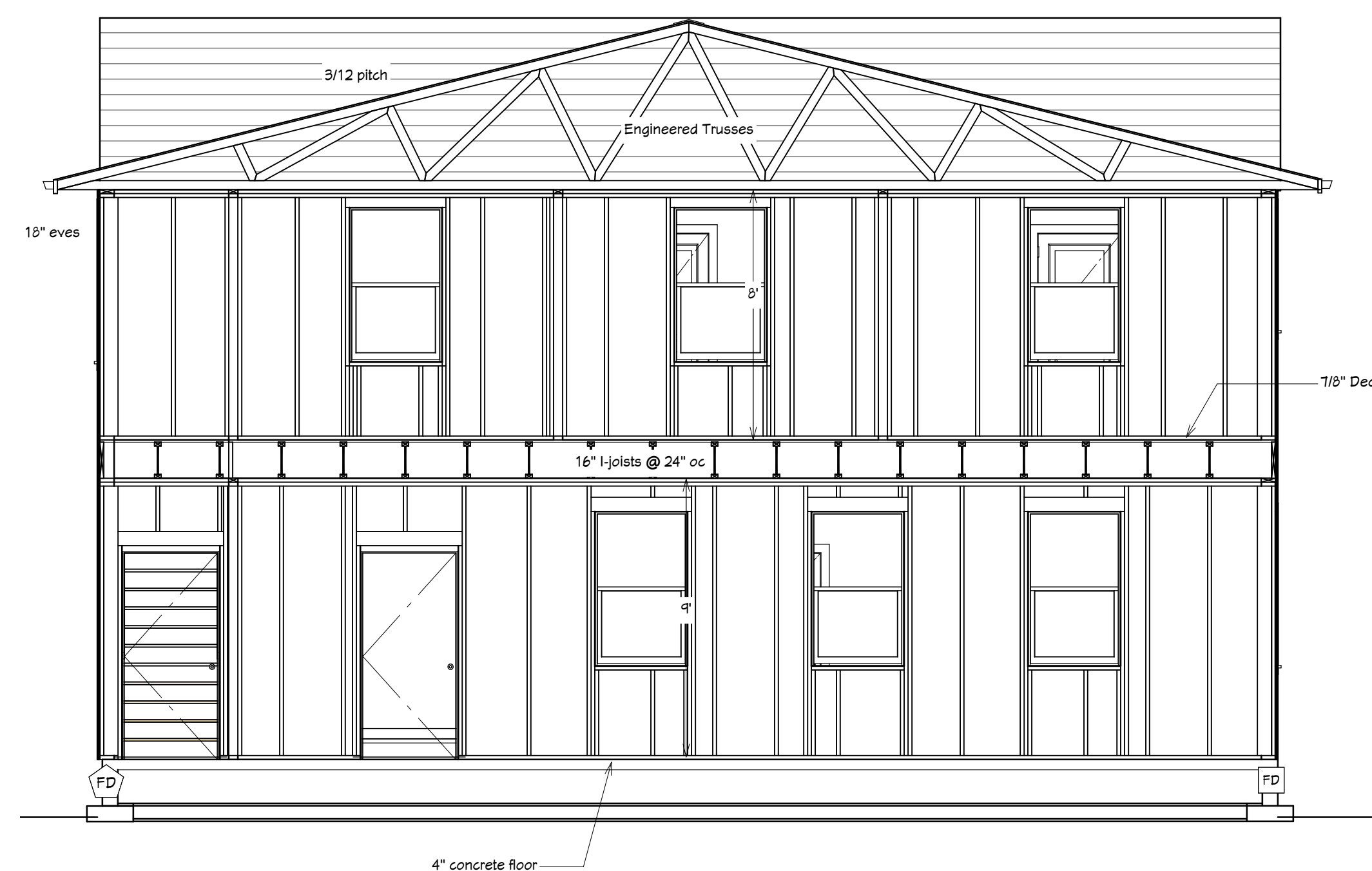
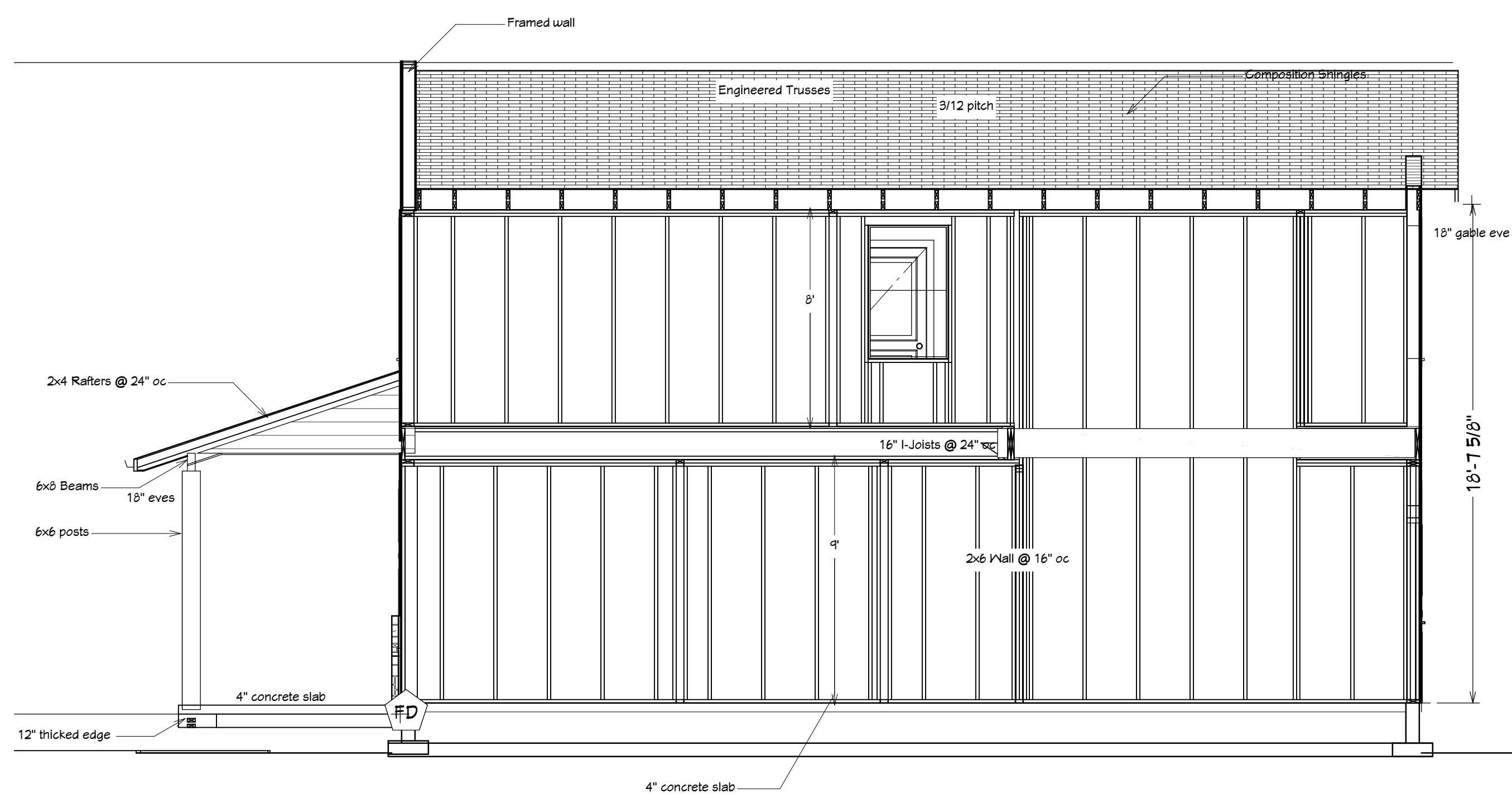
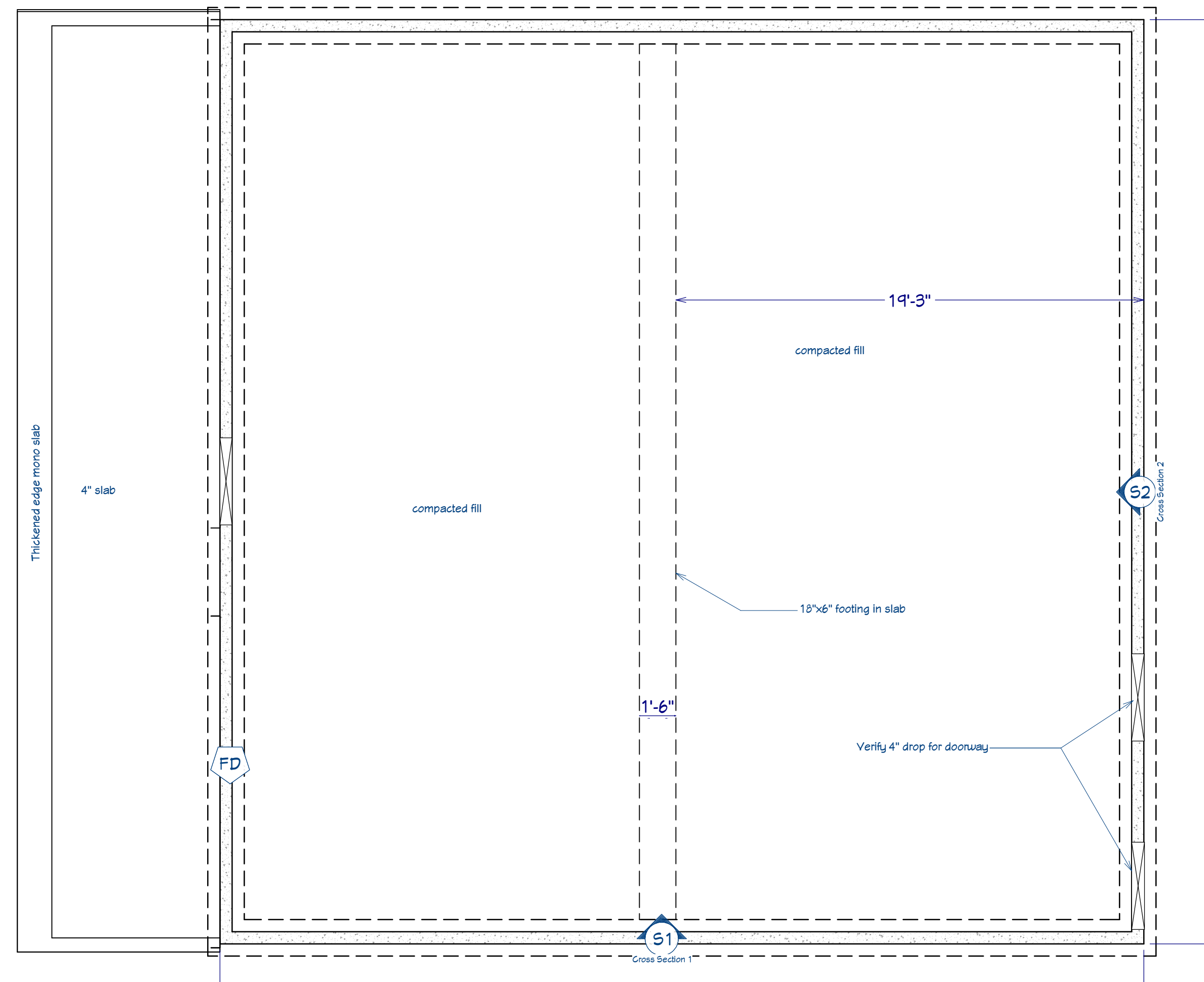
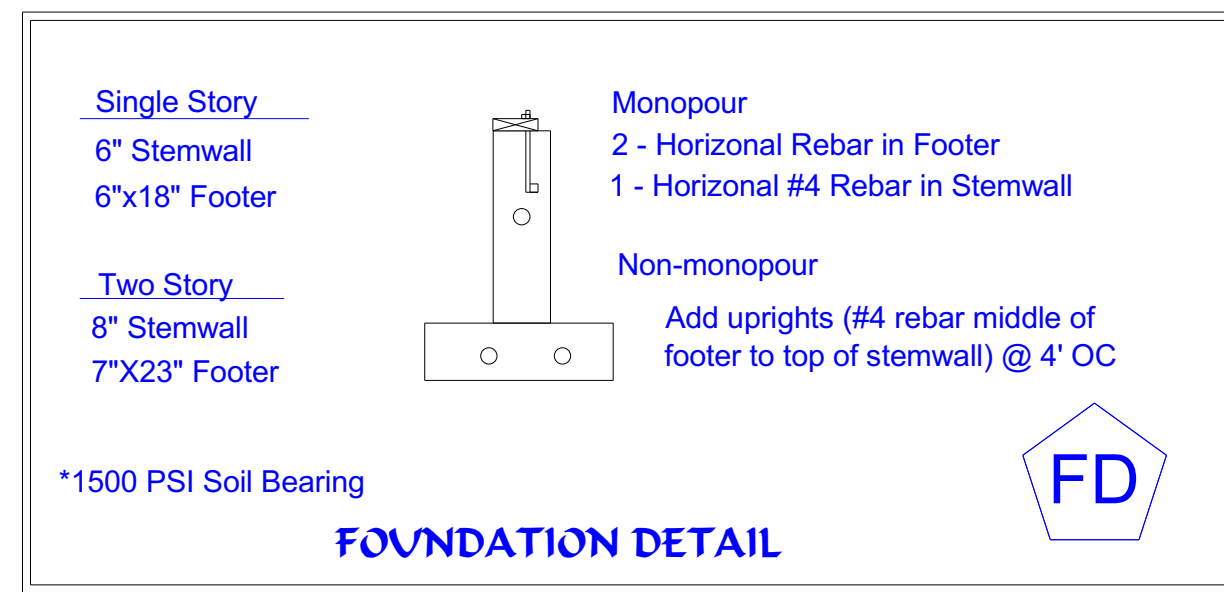
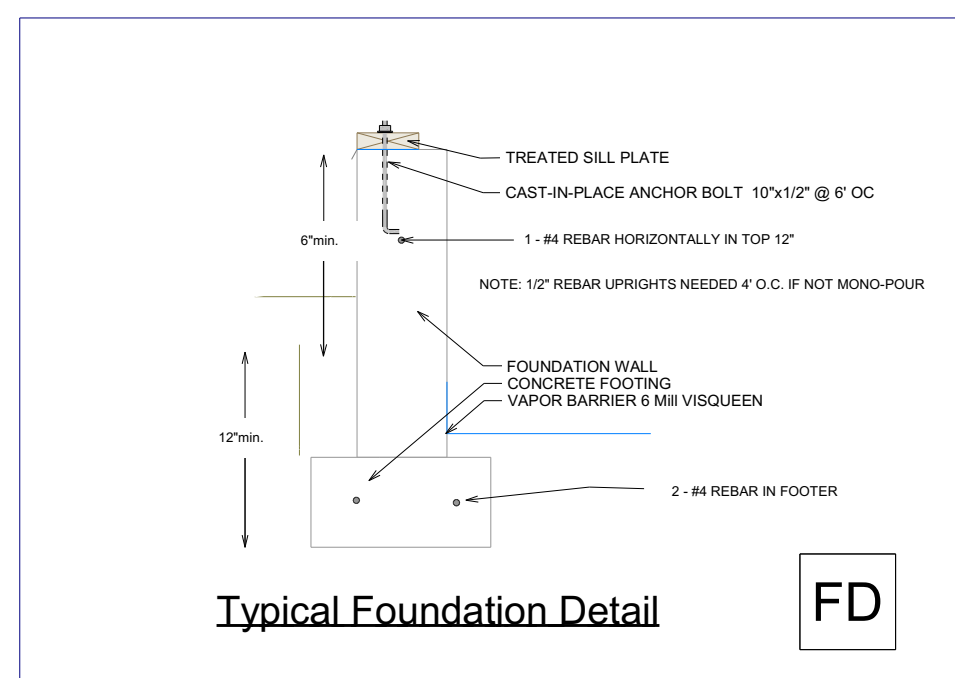
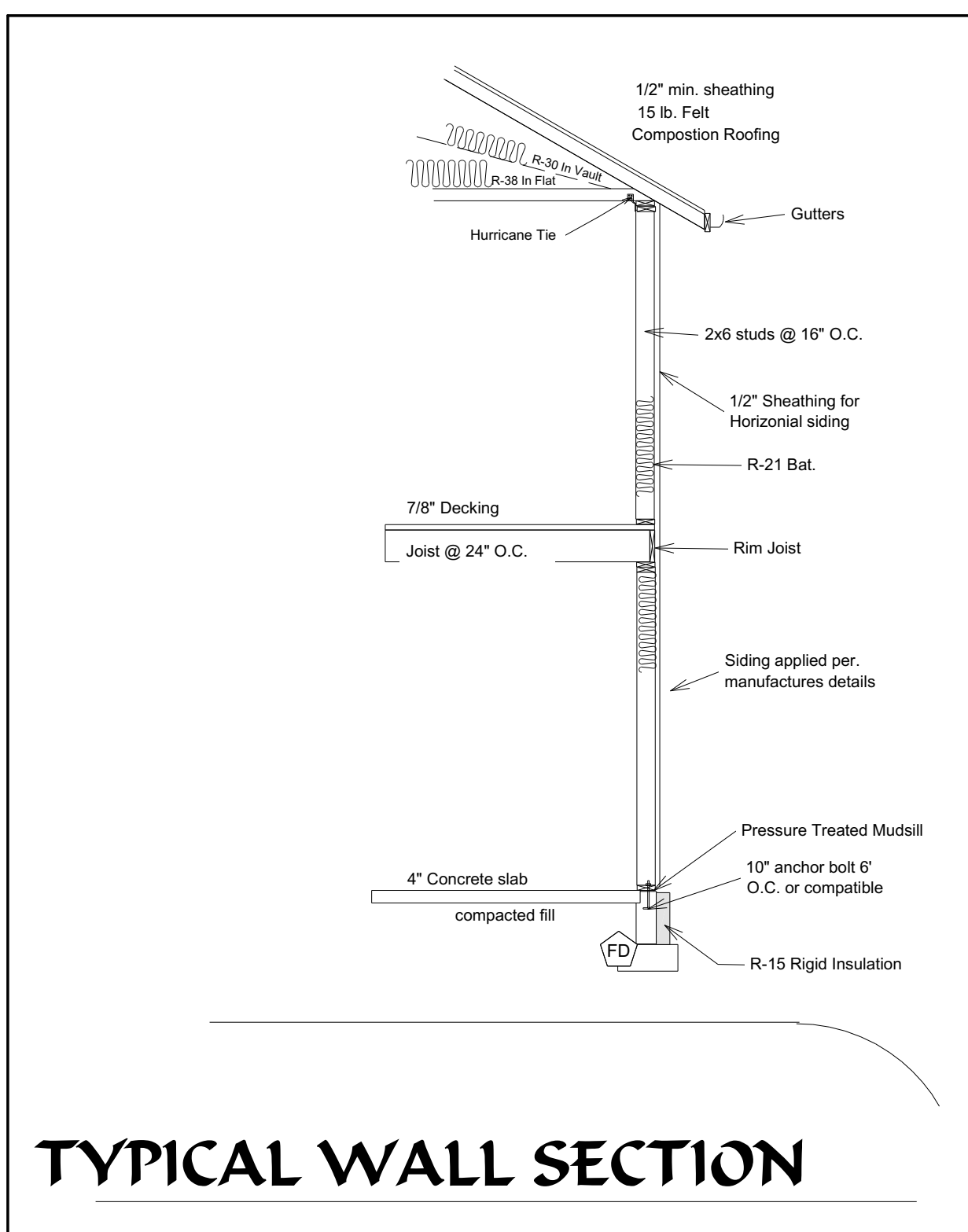


Wall Bracing 1st floor

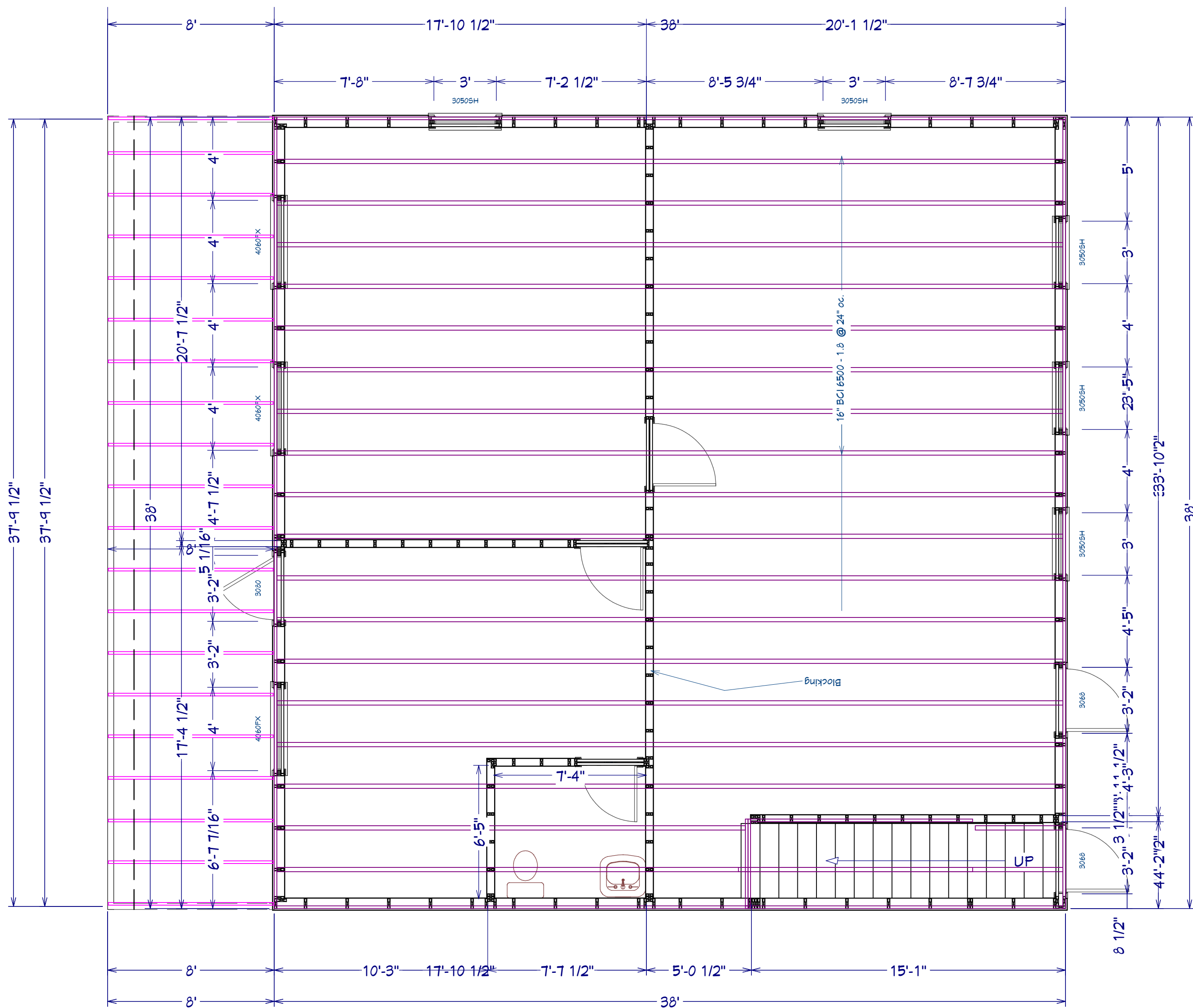


Wall Bracing 2nd Floor

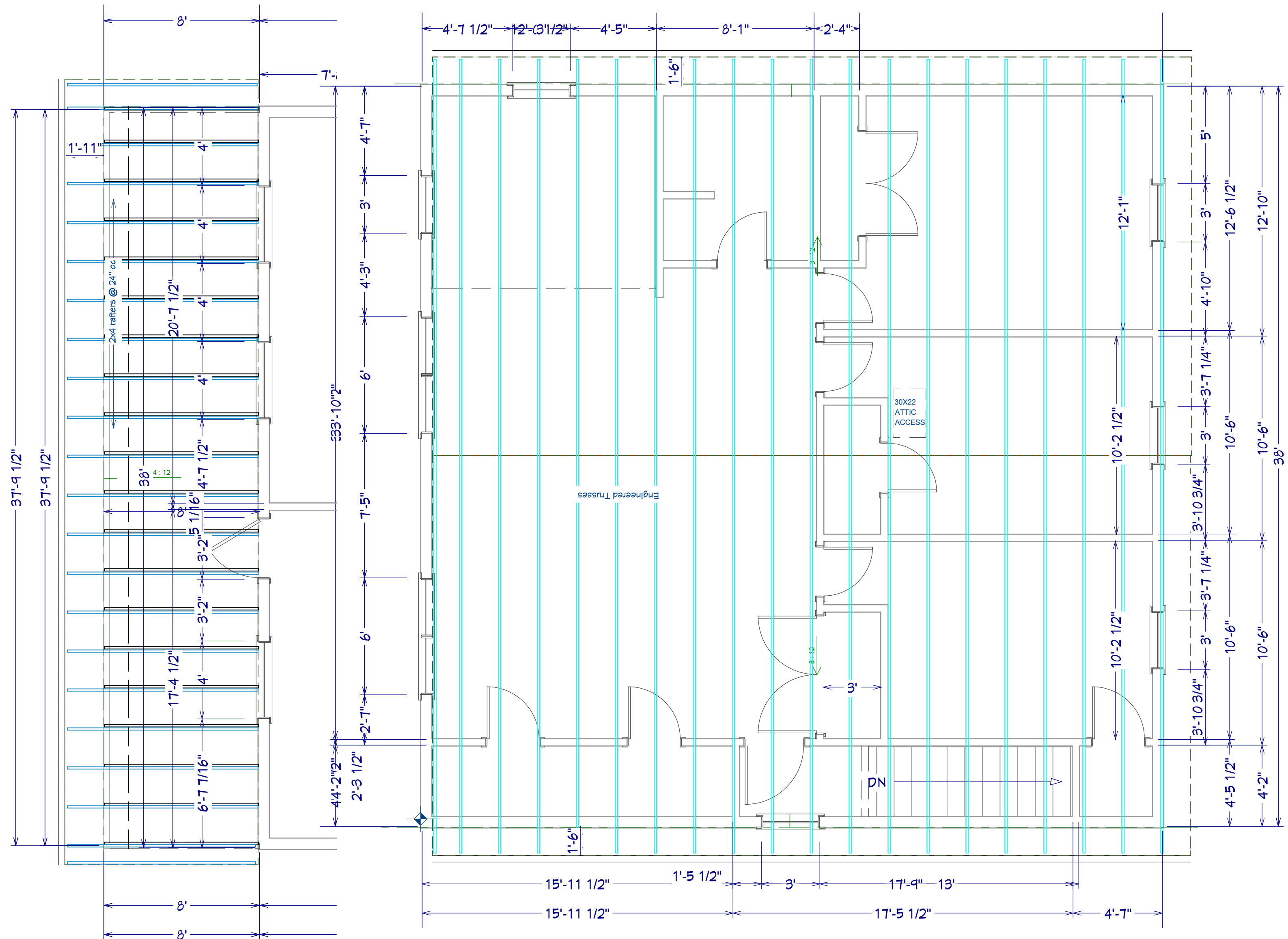
These drawings are the proprietary work product and property of CrossBeam Design LLC (CBD). Use of these drawings and concepts contained therein without the written permission of CBD is prohibited. Permission has been granted to client mentioned on drawings for one use only and intended location only.



These drawings are the proprietary work product and property of CrossBeam Design LLC (CBD). Use of these drawings and concepts contained therein without the written permission of CBD is prohibited. Permission has been granted to client mentioned on drawings for one use only and intended location only.

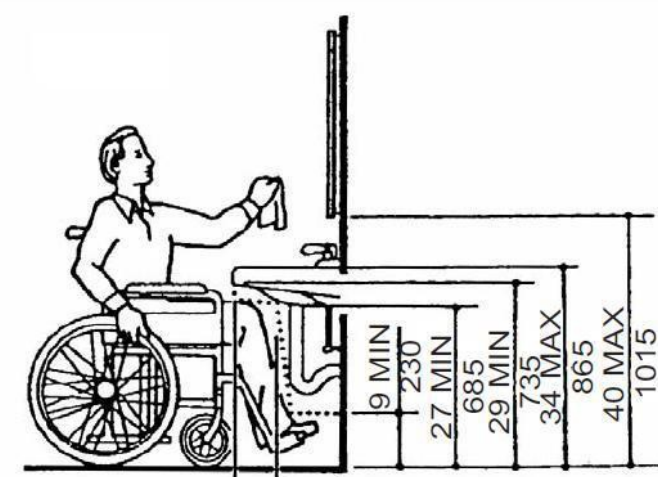


2nd Floor Layout



1st Floor

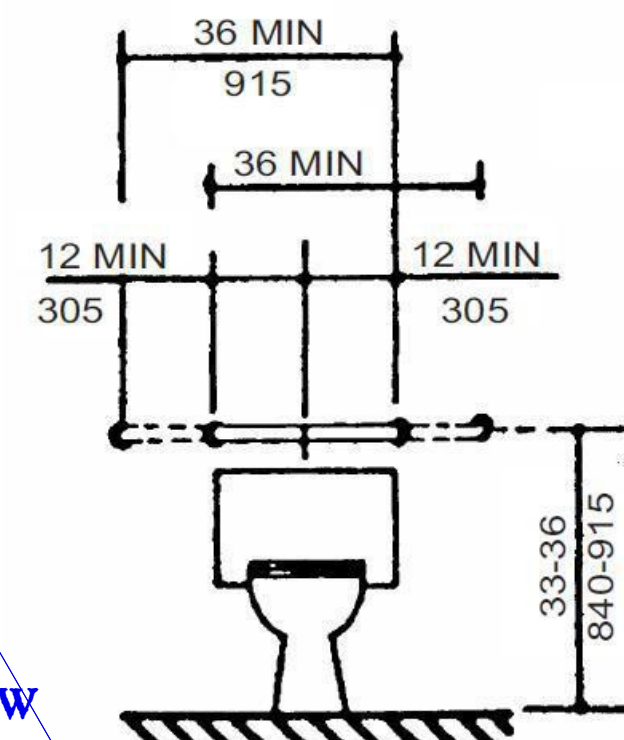
2nd Floor Roof Layout



KNEE CLEARANCE 205
 8 MIN
 6 MAX TOE CLEARANCE 150
 17 MIN DEPTH 430
 9 MIN 230
 27 MIN 685
 27 MIN 27 MIN
 34 MAX 865
 40 MAX 1015

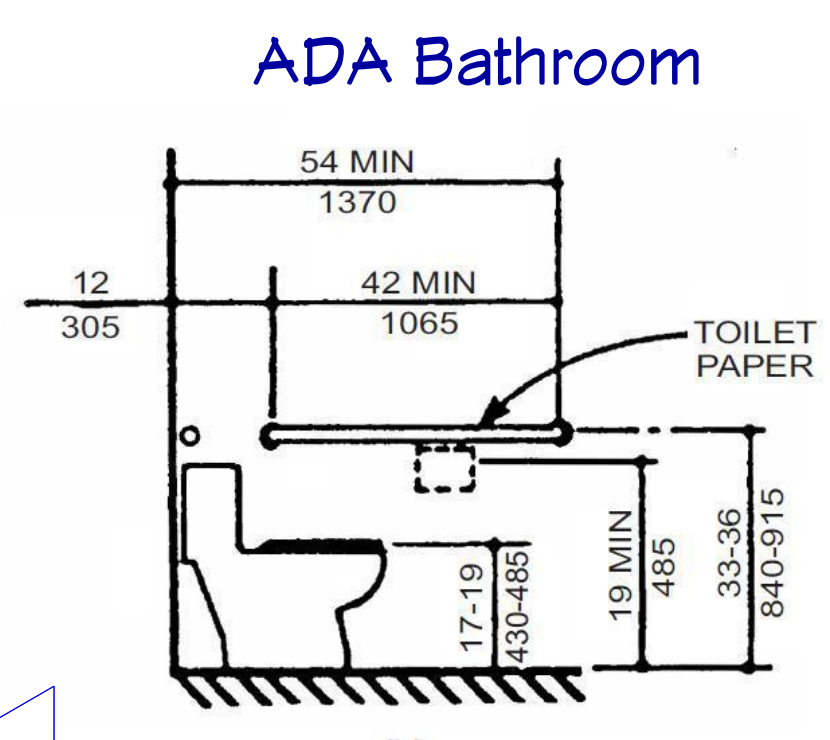
ALC

ADAAG FIGURE 31
 LAVATORY CLEARANCES



(a) BACK WALL

AWBW

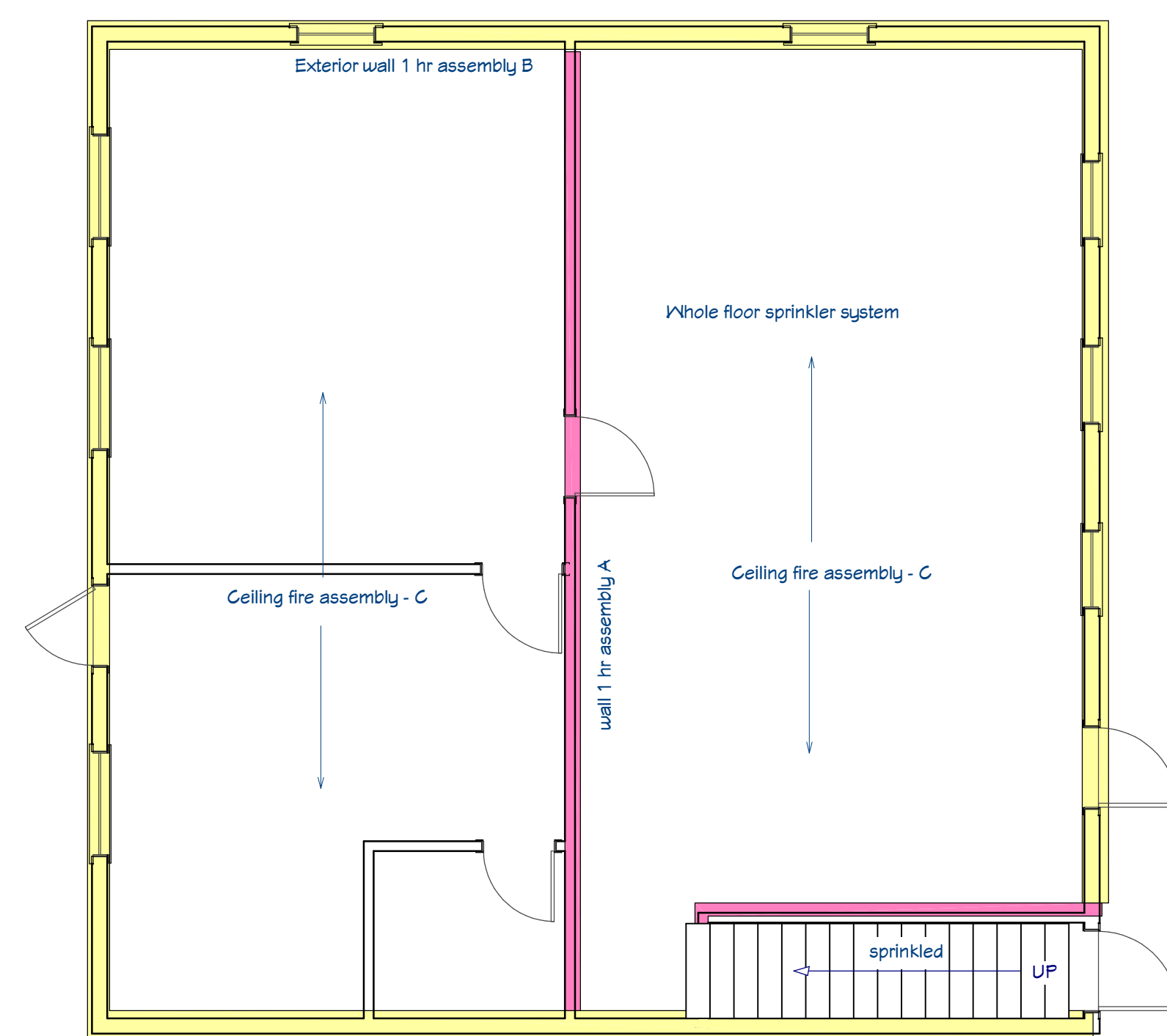
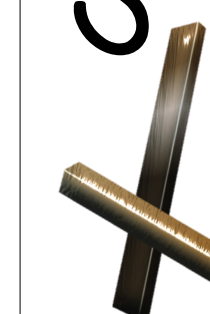


(b) SIDE WALL

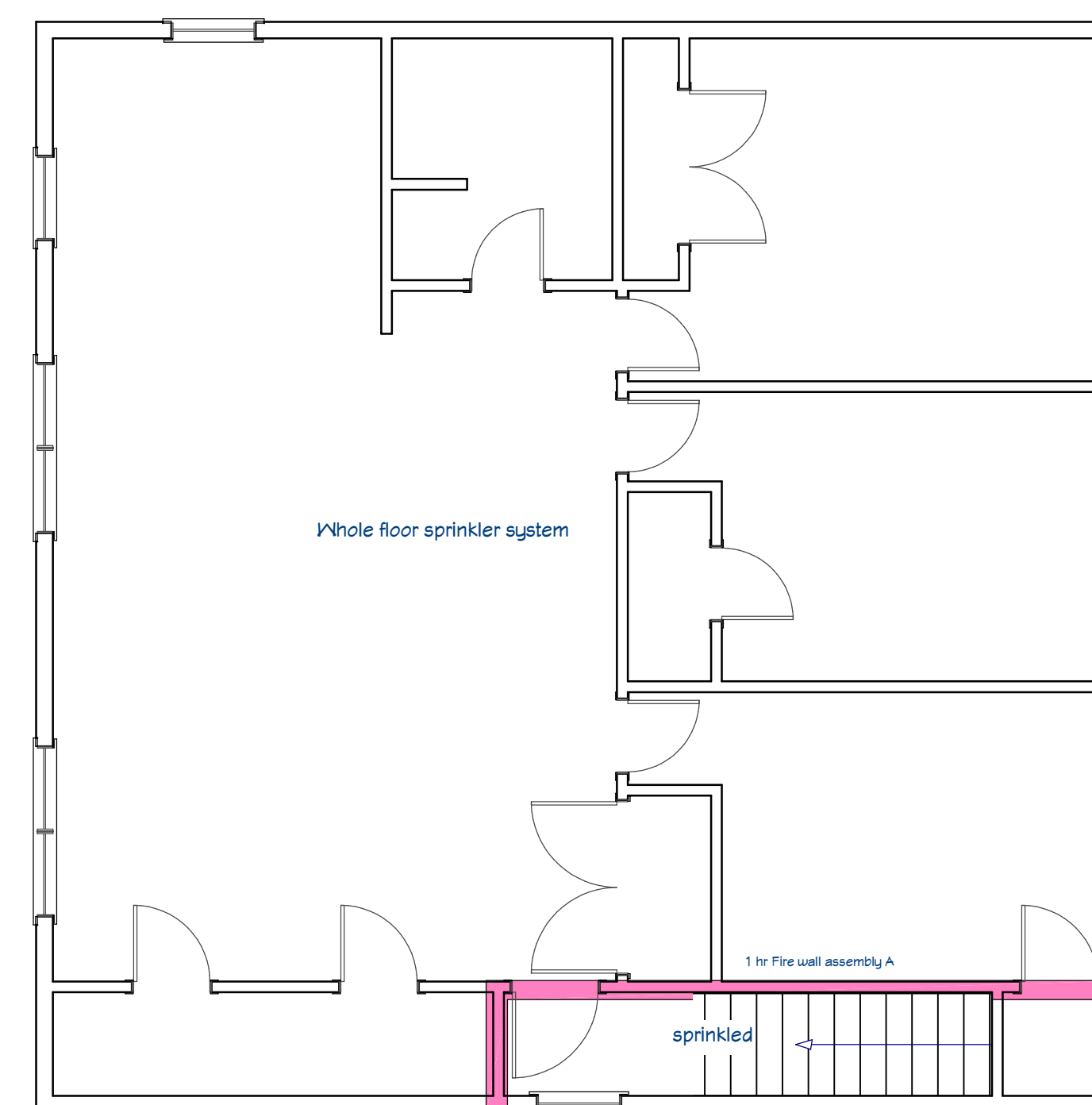
AWSW

ADAAG FIGURE 29
 GRAB BARS AT WATER CLOSETS

These drawings are the proprietary work product and property of CrossBeam Design LLC (CBD). Use of these drawings and concepts contained therein without the written permission of CBD is prohibited. Permission has been granted to client mentioned on drawings for one use only and intended location only.



1st Floor Fire Walls



2nd Floor Fire Walls

WS6-1.5 One-Hour Fire-Resistance-Rated Wood-Frame Wall Assembly
(Rated from gypsum wallboard side)
2x6 Wood Stud Wall - 100% Design Load - ASTM E 119/NFPA 251

- Framing - Nominal 2x6 wood studs, spaced 16 in. o.c., double top plates, single bottom plate
- Interior Sheathing - 5/8 in. Type X gypsum wallboard, 4 ft. wide, applied vertically. All panel edges backed by framing or blocking.
- Exterior Sheathing - Minimum 3/8 in. wood structural panels (oriented strand board), applied vertically, horizontal joints blocked.
- Gypsum Fasteners - 2-1/4 in. #6 Type S drywall screws, spaced 7 in. o.c.
- Panel Fasteners - 6d common nails (bright) - 12 in. o.c. in the field, 6 in. o.c. panel edges.
- Insulation - R-19 fiberglass insulation.
- Joints and Fastener Heads - Wallboard joints covered with paper tape and joint compound, fastener heads covered with joint compound.

Tests conducted at the NGC Testing Services
Test No: WP-1408 (Fire Endurance & Hose Stream) August 13, 2004
Third Party Witness: NGC Testing Services

This assembly was tested at 100% design load, calculated in accordance with the 2018 National Design Specification® for Wood Construction. The authority having jurisdiction should be consulted to assure acceptance of this report.

Assembly B

DESIGN NO. UL U305

FIRE RATING: 1 HOUR
STC RATING: 38
SOUND TEST: USG-151235
SYSTEM THICKNESS: 4.34" (121 MM)
LOCATION: INTERIOR
FRAMING TYPE: WOOD STUD (LOAD-BEARING)

ASSEMBLY REQUIREMENTS:

GYPSUM PANELS: ONE LAYER 5/8" (15.9 MM) SHEETROCK® ECOSMART GYPSUM PANEL (UL TYPE UL1X™)
WOOD STUDS: 2" X 4" (38 X 89 MM) WOOD STUDS, 16" (406 MM) O.C.
INSULATION: 3-1/2" (89 MM) FIBERGLAS® INSULATION
GYPSUM PANELS: ONE LAYER 5/8" (15.9 MM) SHEETROCK® ECOSMART GYPSUM PANEL (UL TYPE UL1X™)

Assembly A

Solid wood joist floor, 38 mm x 235 mm (1-1/2" x 9-1/4") joists, spaced 406 mm (16") o.c., 15.5 mm (5/8") OSB subfloor, resilient channels spacing specified below; single 152 mm (6") thickness EcoTouch® QuietZone® PINK® FIBERGLAS® Acoustic Batt Insulation; double layer type "x" gypsum board thickness specified below:
Gypsum board Thickness: Resilient channel Spacing o.c.

NBC-F9d	1 h	TLF-95-107a	55	IIF-95-039	49	SWJFS807	15.9 mm (5/8")	610 mm (24")
NBC-F9h	45 min	TLF-95-115a	56	IIF-95-041	50	SWJFS807	12.7 mm (1/2")	610 mm (24")
NBC-F9g	1 h	NBC-F9g	51	NBC-F9g	44	SWJFS807	12.7 mm (1/2")	406 mm (16")

Assembly C

LIVING SPACE
OFFICE SQ. FT. 1302
2ND FLOOR SQ. FT. 1121

Note: All structural details may or may not conform with local building code. These details may need to be stamped by local building engineer for structural loads and bearings.

SCALE:
1/4"=1'

These drawings are the proprietary work product and property of CrossBeam Design LLC (CBD). Use of these drawings and concepts contained therein without the written permission of CBD is prohibited. Permission has been granted to client mentioned on drawings for one use only and intended location only.

Applegate Project
1811-1817 Applegate St.
Philomath
Plan # 14443BD2b25-3office1B X10 R 5/15/2023