

4315 CLIO ROAD
FLINT, MICHIGAN

INDUSTRIAL FOR SALE
79,347 square Feet Available



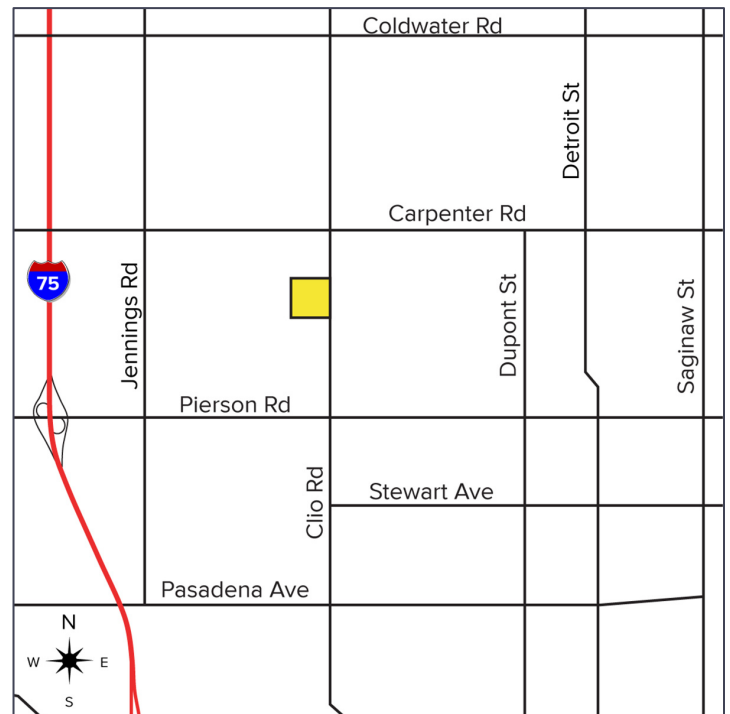
**SIGNATURE
ASSOCIATES**
KNOW SIGNATURE | KNOW RESULTS

APPROVED FOR GROW FACILITY



PROPERTY FEATURES

- 79,347 square feet available
- 12,013 sq. ft. of office space
- 13'-20' clear height
- (4) grade level doors
- 198 parking spaces
- Zoned M-1, light industrial
- Approved for Class "A" Marihuana Grow
- Located on 8.19 acres
- 1200 amps, 480 volts power
- Asking Price: \$2,600,000 (\$32.77/sq. ft.)



For more information, please contact:

JOE HAMWAY
(248) 948 0113
jhamway@signatureassociates.com

GREG HUDAS
(248) 799 3162
ghudas@signatureassociates.com

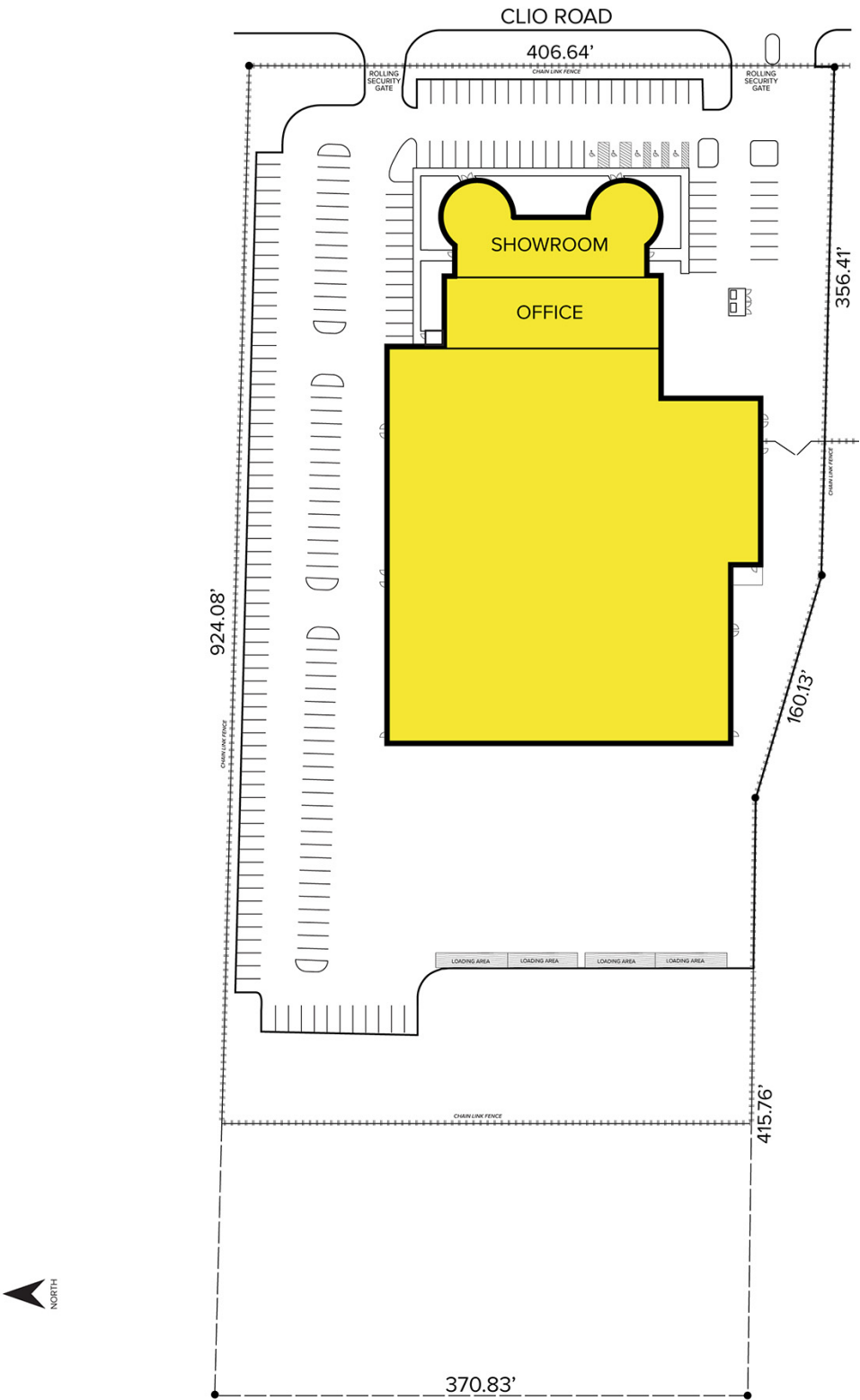
SIGNATURE ASSOCIATES
One Towne Square, Suite 1200
Southfield, MI 48076
www.signatureassociates.com

4315 Clio Road – Flint, Michigan

Industrial For Sale

79,347
Square Feet
AVAILABLE

Site Plan



For more information, please contact:

JOE HAMWAY
(248) 948 0113
jhamway@signatureassociates.com

GREG HUDAS
(248) 799 3162
ghudas@signatureassociates.com

SIGNATURE ASSOCIATES
One Towne Square, Suite 1200
Southfield, MI 48076
www.signatureassociates.com

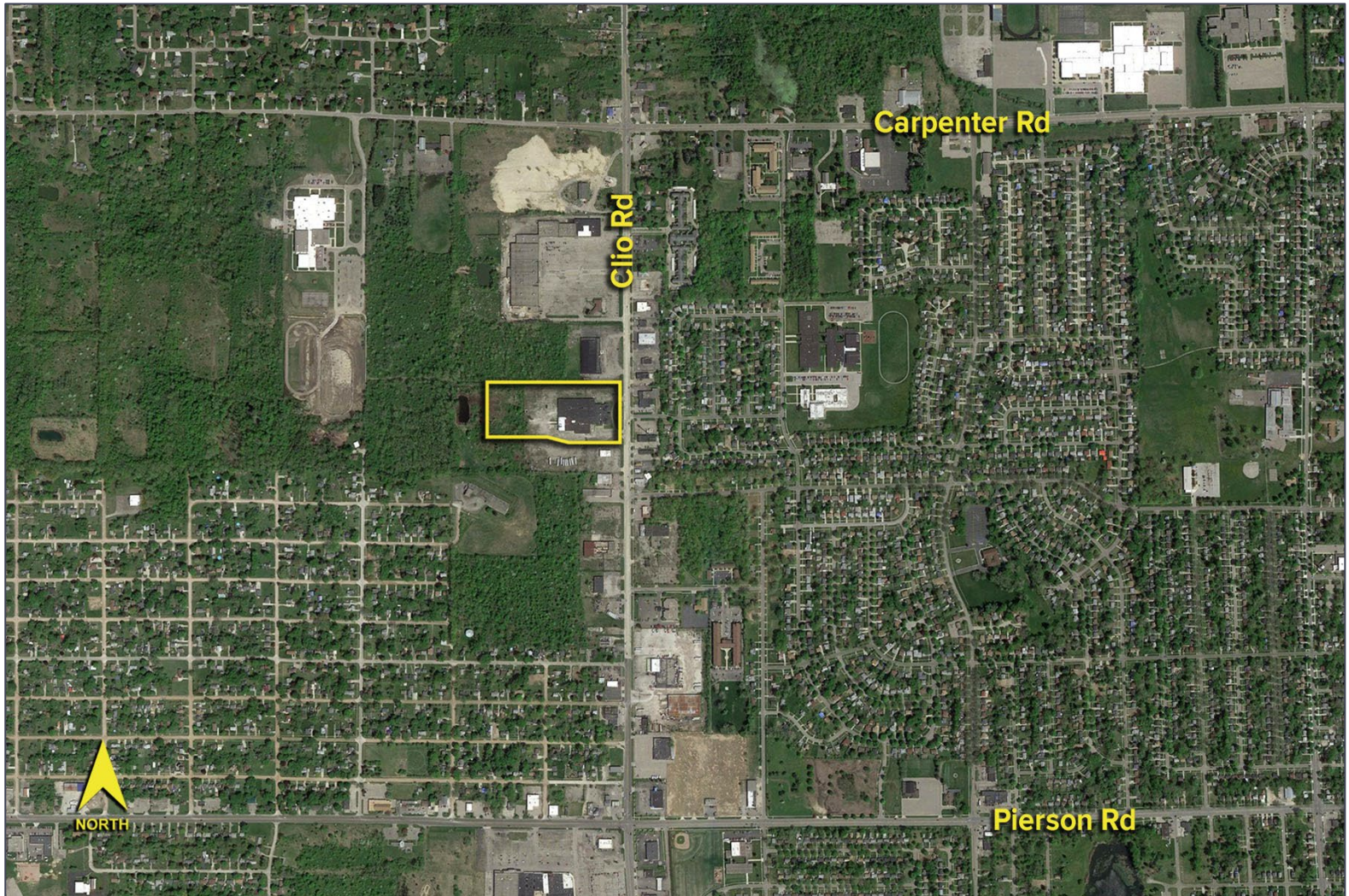
Information is subject to verification and no liability for errors or omissions is assumed. Price is subject to change and listing withdrawal.

4315 Clio Road – Flint, Michigan

Industrial For Sale

79,347
Square Feet
AVAILABLE

Aerial



For more information, please contact:

JOE HAMWAY
(248) 948 0113
jhamway@signatureassociates.com

GREG HUDAS
(248) 799 3162
ghudas@signatureassociates.com

SIGNATURE ASSOCIATES
One Towne Square, Suite 1200
Southfield, MI 48076
www.signatureassociates.com